

Exceptional Bank Space for Lease in Corpus Christi, TX

615 North Upper Broadway, Corpus Christi, TX 78408



**GROUND FLOOR
RETAIL/OFFICE
SPACE AVAILABLE**

PROPERTY HIGHLIGHTS



- COVID 19 Clean – Management & Maintenance actively taking necessary actions to combat the effects of COVID-19
- **Ground Floor Space Available - 16,769 SF; additional 1,595 SF on 2nd Floor (Safety Deposit Area)**
- High-end branch bank location coupled with a 4-lane drive-thru system ideal for banking
- Contains secure vault with safety-deposit boxes and additional safes perfect for banks
- Long term bank operating history – Wells Fargo has been operating at this location more than 20 years
- Prominent downtown building located on corner of North Upper Broadway & Antelope Street
- Minutes from the County Courthouse, Hotels, Beaches, Restaurants and Retail
- More than 115,000 residents live in a 5-mile radius
- Full-service building providing 24-hour secured access, HVAC, Water, Electric and Janitorial
- On-site Management, Maintenance and Leasing



AETNA REALTY

For Further Information, Please Contact:

Elliot Zeitune/ (212) 244-7410

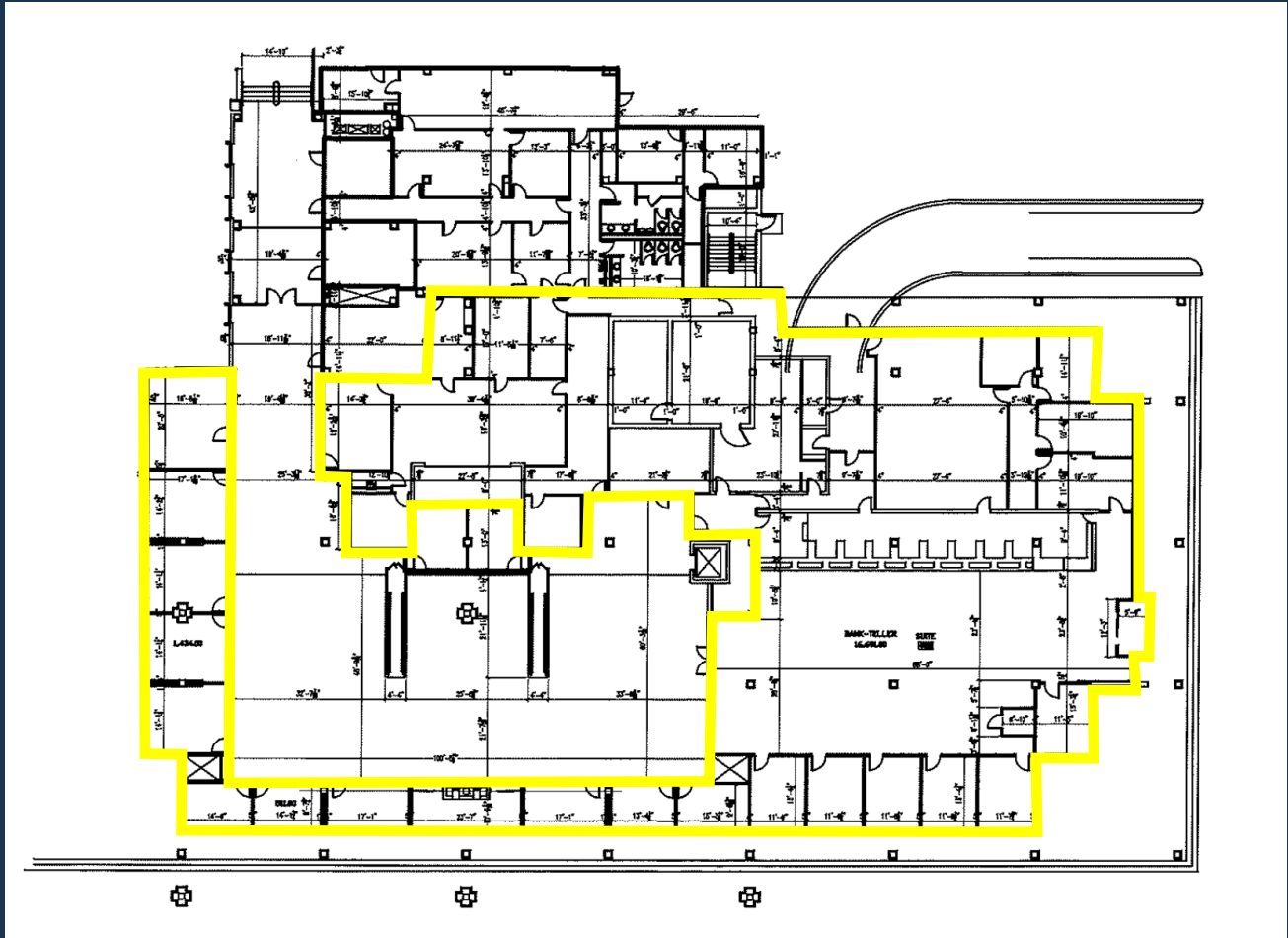
elliott@aetnarealty.com

www.aetnarealty.com

Exceptional Bank Space for Lease in Corpus Christi, TX

615 North Upper Broadway, Corpus Christi, TX 78408

GROUND FLOOR PLAN



SUITE 100 – 16,769 SF



AETNA REALTY

For Further Information, Please Contact:

Elliot Zeitune/ (212) 244-7410

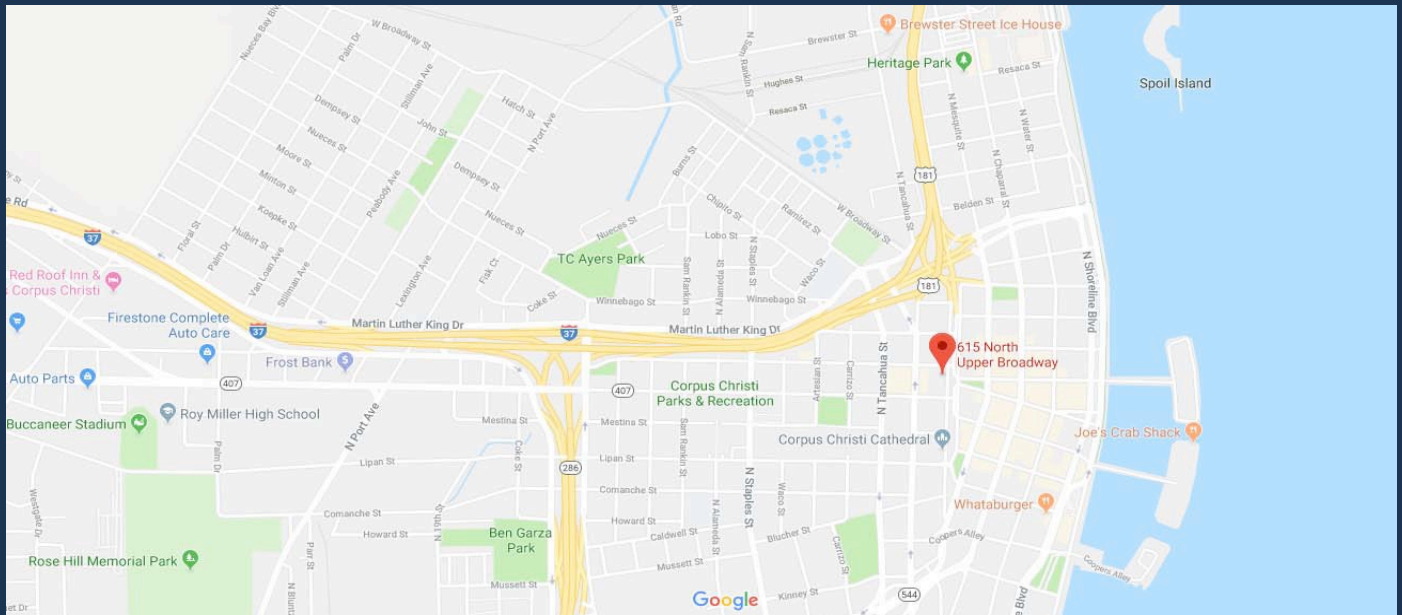
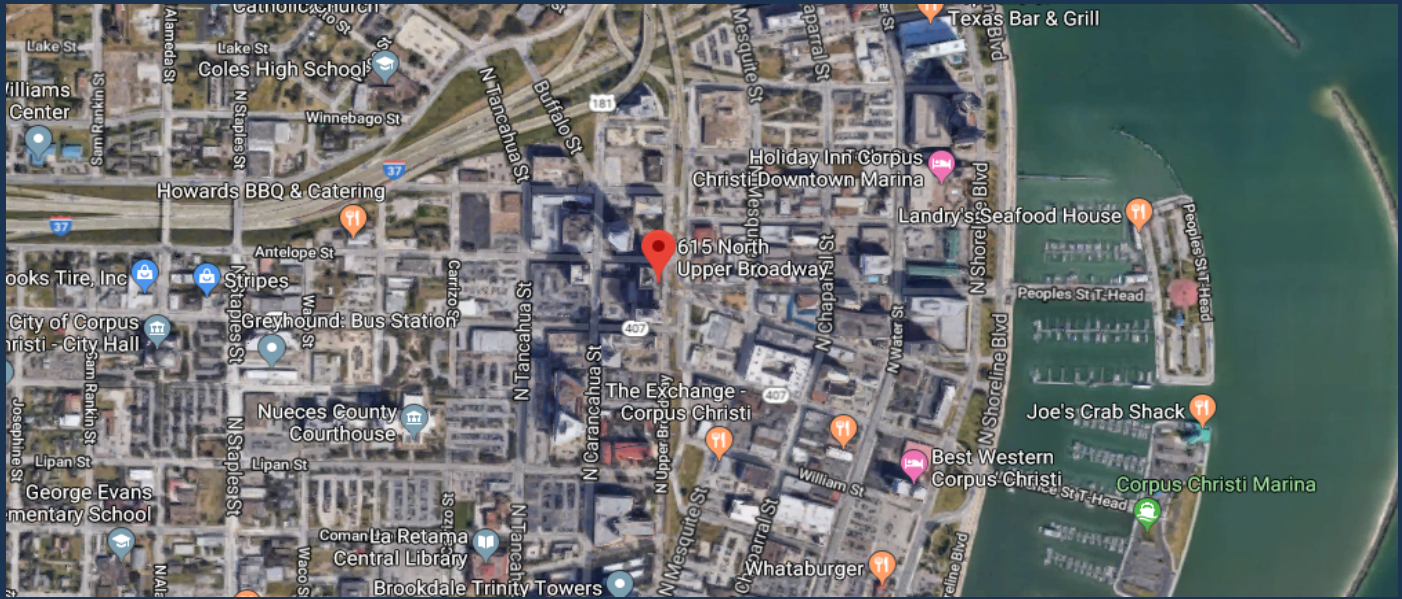
elliott@aetnarealty.com

www.aetnarealty.com

Exceptional Bank Space for Lease in Corpus Christi, TX

615 North Upper Broadway, Corpus Christi, TX 78408

PROPERTY LOCATION



AETNA REALTY

For Further Information, Please Contact:

Elliot Zeitune/ (212) 244-7410

elliott@aetnarealty.com

www.aetnarealty.com