

FOR SALE

📍 Lot 10 Creek Dr | Jonesboro, AR 72401

LARKWOOD DR

CREEK DR

BITTLEST

E HIGHLAND DR



HALSEY

REAL ESTATE

No warranty, expressed or implied, has been made as to the accuracy of this information. No liability is assumed for errors or omissions.

Taylor Wilson Realtor®
taylor@halseyre.com

Landon Wilson Realtor®
landon@halseyre.com

870 972 9191
HalseyRealEstate.com



📍 Lot 10 Creek Dr | Jonesboro, AR 72401

OPPORTUNITY OVERVIEW

\$450,000.00

PRICE

±1.31 AC

LOT SIZE

C-3

ZONING

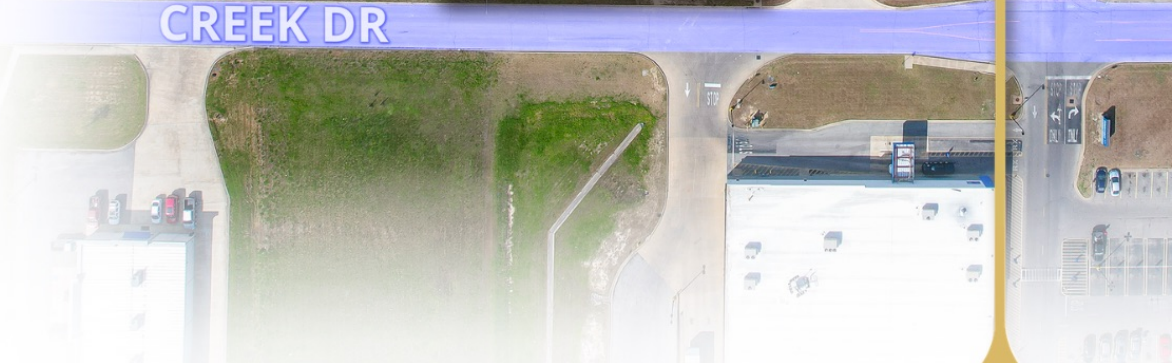
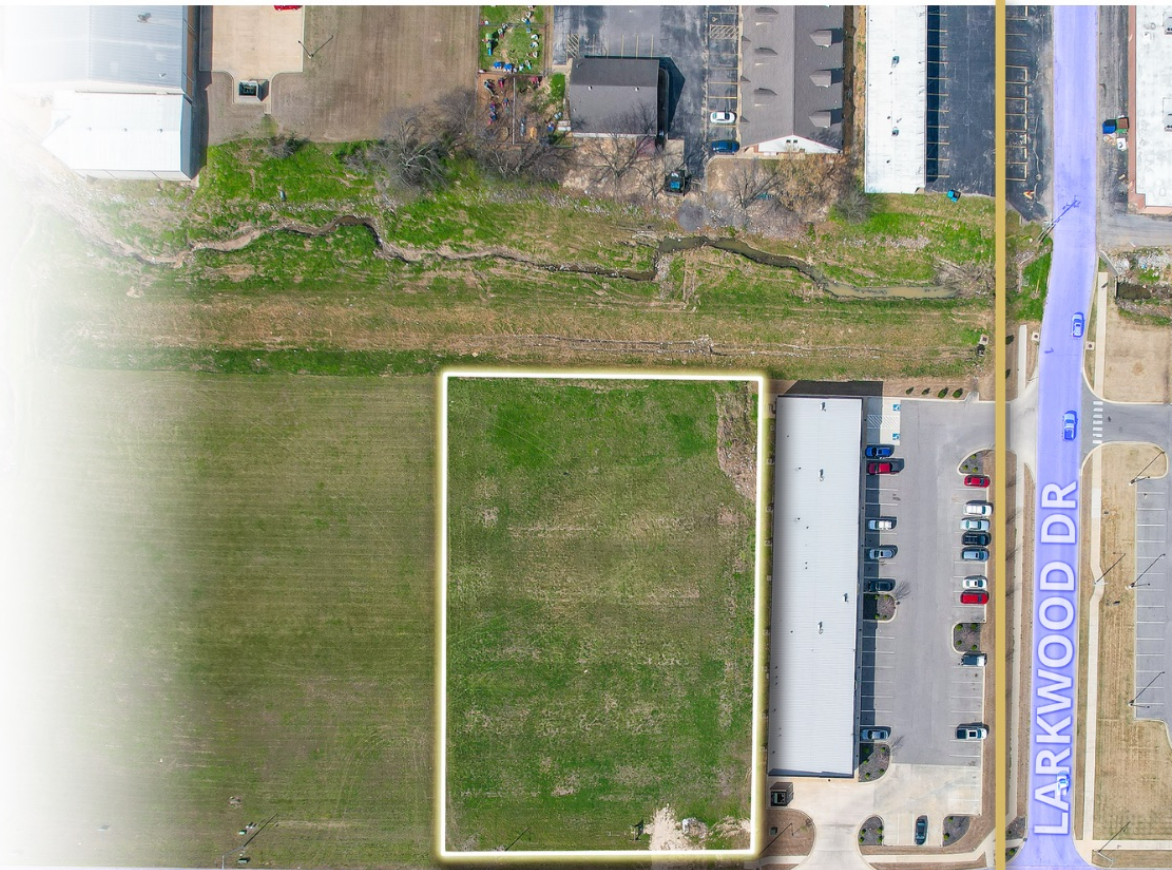
PROPERTY HIGHLIGHTS

- ✦ Proximity to Red Wolf Blvd, a major north-south arterial
- ✦ Surrounded by established retail/service and neighborhoods
- ✦ Positioned near national and regional brands, supporting visibility and long-term relevance
- ✦ Opportunity within a fully developed commercial area
- ✦ Central location with direct access to multiple residential neighborhoods and commercial nodes

ZONING DESCRIPTION

C-3 General Commercial District

For commercial & retail uses which are convenient & serve the needs of the traveling public. For limited amounts of merchandise, equipment & material being offered for retail sale that are more suitable for storage/display outside of an enclosed structure. Groupings of facilities shall be encouraged, as opposed to less desirable strip commercial.



HALSEY

REAL ESTATE

No warranty, expressed or implied, has been made as to the accuracy of this information. No liability is assumed for errors or omissions.

Taylor Wilson Realtor®
taylor@halseyre.com

Landon Wilson Realtor®
landon@halseyre.com

870 972 9191
HalseyRealEstate.com



Lot 10 Creek Dr | Jonesboro, AR 72401

N



Walmart
Neighborhood Market

HALSEY

REAL ESTATE

No warranty, expressed or implied, has been made as to the accuracy of this information. No liability is assumed for errors or omissions.

Taylor Wilson Realtor®
taylor@halseyre.com

Landon Wilson Realtor®
landon@halseyre.com

870 972 9191
HalseyRealEstate.com



Lot 10 Creek Dr | Jonesboro, AR 72401



HALSEY

REAL ESTATE

Taylor Wilson Realtor®
taylor@halseyre.com

Landon Wilson Realtor®
landon@halseyre.com

No warranty, expressed or implied, has been made as to the accuracy of this information. No liability is assumed for errors or omissions.

870 972 9191
HalseyRealEstate.com



📍 Lot 10 Creek Dr | Jonesboro, AR 72401

PRIMARY RETAIL DISTRICT

The Primary Retail District of Jonesboro serves as an economic hub, home to a diverse mix of industries including finance, law, healthcare, and retail. Centrally located and intersected by major routes like I-555, it features modern office buildings and busy storefronts that house everything from local startups to major corporations. In addition to its commercial appeal, this district plays a key role in providing essential services and job opportunities, reflecting Jonesboro's commitment to fostering business growth and regional prosperity.

RESTAURANTS & RETAIL



KEY PLAYERS

- STATE** (Arkansas State University):
 - Connected by several major roadways.
 - Over 1,500 employees & 14,000 students.
- REEDMONT** (Luxury living for a modern lifestyle):
 - 80 acre mixed-use development
 - Luxury condos, restaurants, retail, and more.
- CRAIGHEAD FOREST PARK** (est. 1937):
 - 692 acre park in Crowley's Ridge
 - Offers camping, fishing, trails, sports, playgrounds, & more.
- RIDGE** (Athletics Center Jonesboro):
 - 200,000 sqft sports complex
 - Will offer athletic courts, pools, seating & outside water features.

HALSEY

REAL ESTATE

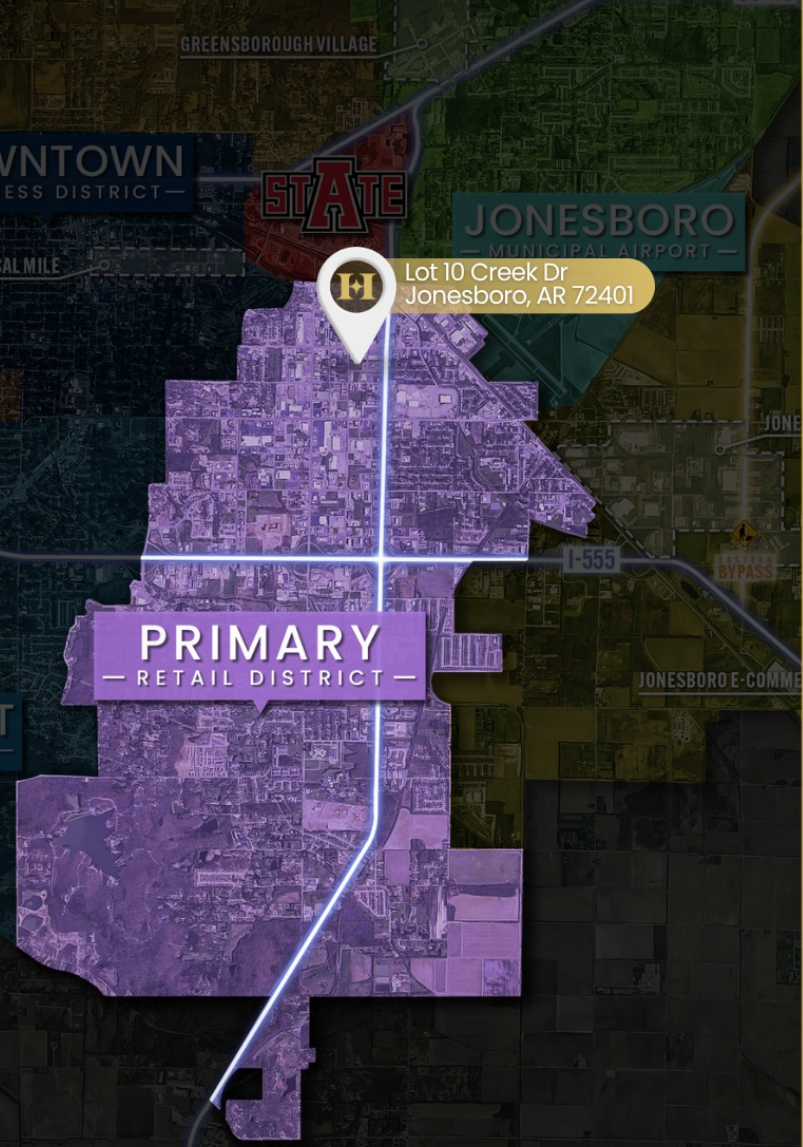
Taylor Wilson Realtor®
taylor@halseyre.com

Landon Wilson Realtor®
landon@halseyre.com

No warranty, expressed or implied, has been made as to the accuracy of this information. No liability is assumed for errors or omissions.

870 972 9191
HalseyRealEstate.com

MARKET MAP



Lot 10 Creek Dr | Jonesboro, AR 72401

DEMOGRAPHICS

HEALTH CARE & SOCIAL ASSISTANCE
RETAIL TRADE
MANUFACTURING
Top Employment Industries
for Jonesboro, AR

KEY FACTS

Based on a 7 mile ring of the subject property.

2.4
Avg. Size
Household

90,585
Total Population

\$237,994
Median Home Value

33.8
Median Age

\$32,207
Per Capita Income

\$60,834
Median Household
Income

20.5 min.
Avg. Commute Time
for Jonesboro, AR

3,757
Businesses

102,279
Daytime Population

0.92%
2024-2029
Pop Growth
Rate

HALSEY

REAL ESTATE

This infographic contains data provided by Esri (2025, 2030), Esri-Data Axle (2025), Esri-U.S. BLS (2025) and the Census Bureau ACS 5-year Estimate. No warranty, expressed or implied, has been made as to the accuracy of this information. No liability is assumed for errors or omissions.

Taylor Wilson Realtor®
taylor@halseyre.com

Landon Wilson Realtor®
landon@halseyre.com

870 972 9191
HalseyRealEstate.com



INVESTMENT CONTACTS

📍 Lot 10 Creek Dr | Jonesboro, AR 72401

Taylor Wilson Realtor®

License No. AR SA00086756

870 926 4588 | taylor@halseyre.com

Landon Wilson Realtor®

License No. AR SA00094849

870 514 5578 | landon@halseyre.com



HALSEY

REAL ESTATE

No warranty, expressed or implied, has been made as to the accuracy of this information. No liability is assumed for errors or omissions.

870 972 9191
HalseyRealEstate.com

