



# 5841 STATE HIGHWAY K

CAPE GIRARDEAU, MO 63701

FOR LEASE

Presented By:

CHRIS COLE, JD, CCIM, ALC

573.334.5200  
ccole@lorimont.com

## PROPERTY SUMMARY



### PROPERTY DESCRIPTION

1,440 SF office space with storage area in high traffic location, currently being remodeled. New photos coming soon.

### PROPERTY HIGHLIGHTS

- High Traffic & Visibility Location
- Off-Street Parking Lot
- Landlord Pays Some Utilities
- Suitable for Various Uses
- Immediate Occupancy Possible

### OFFERING SUMMARY

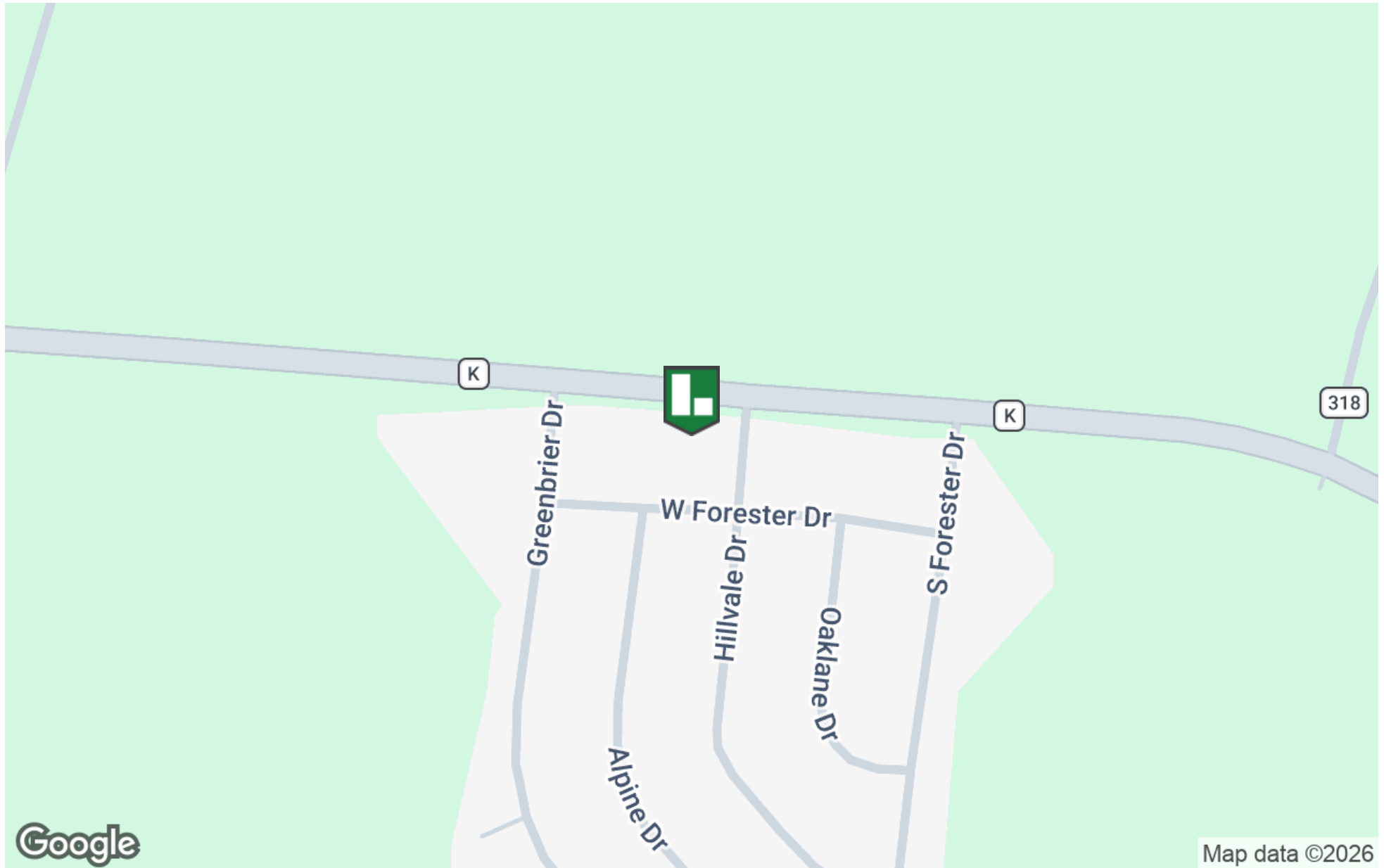
Lease Rate:	\$1,500 per month (Gross)
Available SF:	1,440 SF
Lot Size:	
Building Size:	1,440 SF

### DEMOGRAPHICS

	1 MILE	5 MILES	10 MILES
Total Households	136	11,277	32,694
Total Population	366	26,815	81,303
Average HH Income	\$77,678	\$62,629	\$55,859

Presented By: **CHRIS COLE, JD, CCIM, ALC** | [ccole@lorimont.com](mailto:ccole@lorimont.com)

## LOCATION MAP



Presented By: **CHRIS COLE, JD, CCIM, ALC** | [ccole@lorimont.com](mailto:ccole@lorimont.com)

## ADDITIONAL PHOTOS



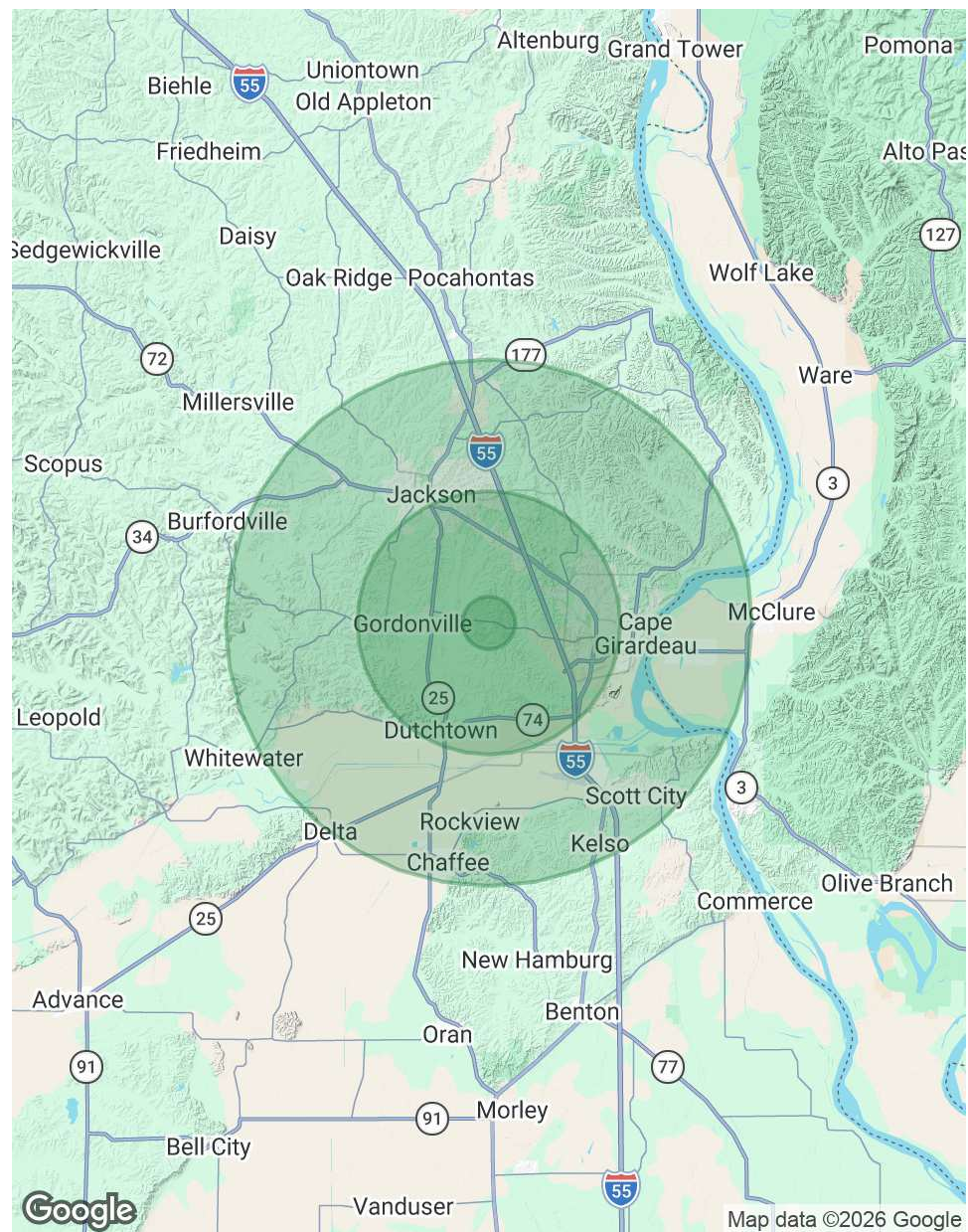
Presented By: **CHRIS COLE, JD, CCIM, ALC** | [ccole@lorimont.com](mailto:ccole@lorimont.com)

# DEMOGRAPHICS MAP & REPORT

POPULATION	1 MILE	5 MILES	10 MILES
Total Population	366	26,815	81,303
Average age	47.5	39.1	36.0
Average age (Male)	40.9	37.6	34.3
Average age (Female)	52.5	39.4	37.3

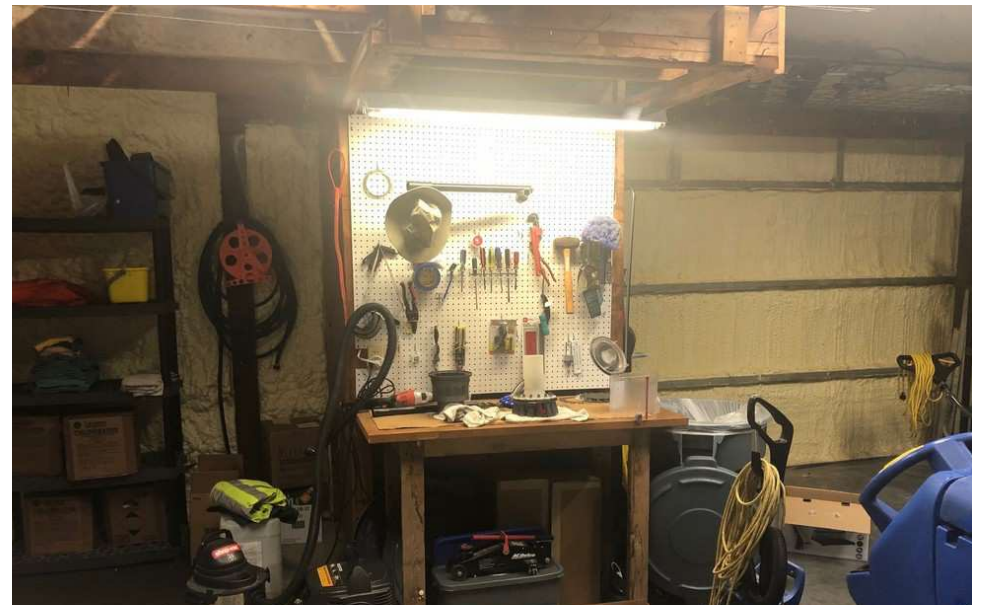
HOUSEHOLDS & INCOME	1 MILE	5 MILES	10 MILES
Total households	136	11,277	32,694
# of persons per HH	2.7	2.4	2.5
Average HH income	\$77,678	\$62,629	\$55,859
Average house value	\$213,203	\$182,166	\$162,213

\* Demographic data derived from 2020 ACS - US Census



Presented By: **CHRIS COLE, JD, CCIM, ALC** | ccole@lorimont.com

## ADDITIONAL PHOTOS



Presented By: **CHRIS COLE, JD, CCIM, ALC** | [ccole@lorimont.com](mailto:ccole@lorimont.com)