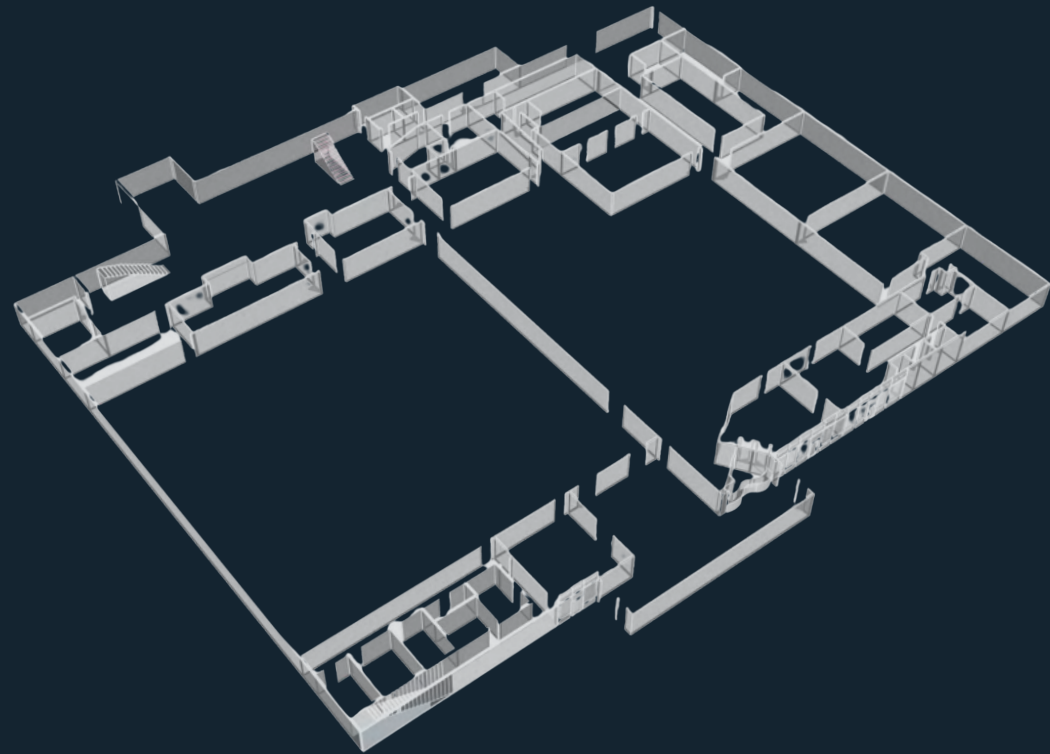




Full Spectrum
Realty

The Great Northwest Shopping Center
8759 Grissom Rd, San Antonio, TX 78251





Property Overview

One Building

Retail frontage

2.93 Acre Lot

43,623 Sqft

Built 1982

Signage

Large Parking Area

Loading Dock

Gated Rear Entry

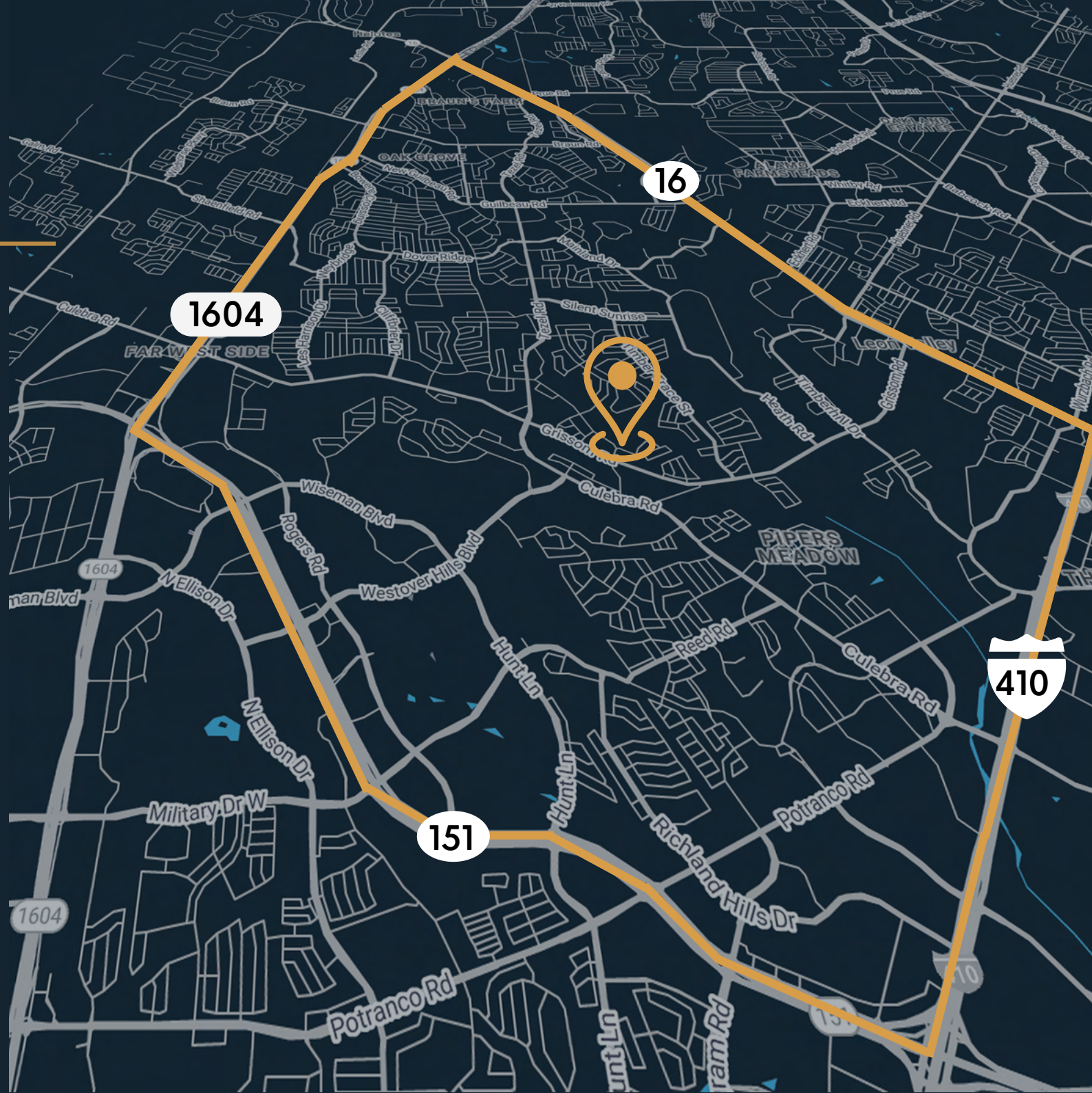
Corner Lot w/ Intersection

Former Major Grocery Store

Location

Property located within 1604, Hwy 151, 410, and Bandera/Hwy 16.

Multiple access points and the heavy commuter traffic of Grissom Rd (20,000 VPD) and Culebra Rd make the Great Northwest Shopping Center a prime location.





Timber Path

Grissom Rd

Culebra Rd/Tezel Rd

Timber Path

Grissom Rd





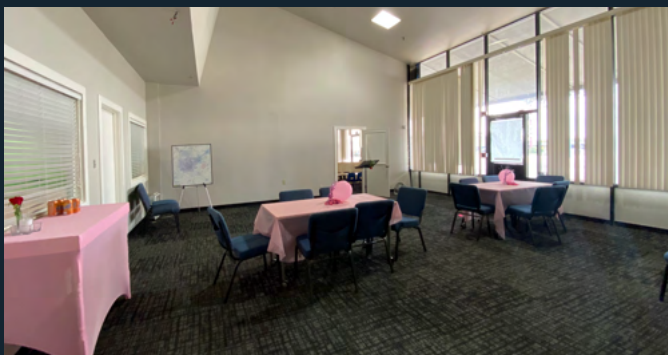
Grissom Rd

Timber Path



Timber Path

Grissom Rd



Financial Information

Lease with Tres Pinguinos Ice Company
\$600.00/mo

Abundant Life Church
Lease back opportunity
with purchase.



San Antonio

Population

2.6 million

Avg Household Income

\$64,165

Unemployment Rate

3.7%

San Antonio continues to draw thousands of people from all over the nation yearly. Billions of dollars are being invested into the city through development projects in multiple sectors, from higher education to the International Airport.

PRESENTED BY:



Full Spectrum
Realty

Tammara Alarcon - Broker
(512) 748-6847

8759 Grissom Rd, San Antonio, TX 78251
Available to view by appointment only.