



# 2165 Burleson Blvd

± 20 ACRES LAND FOR SALE

Burleson, TX 76028

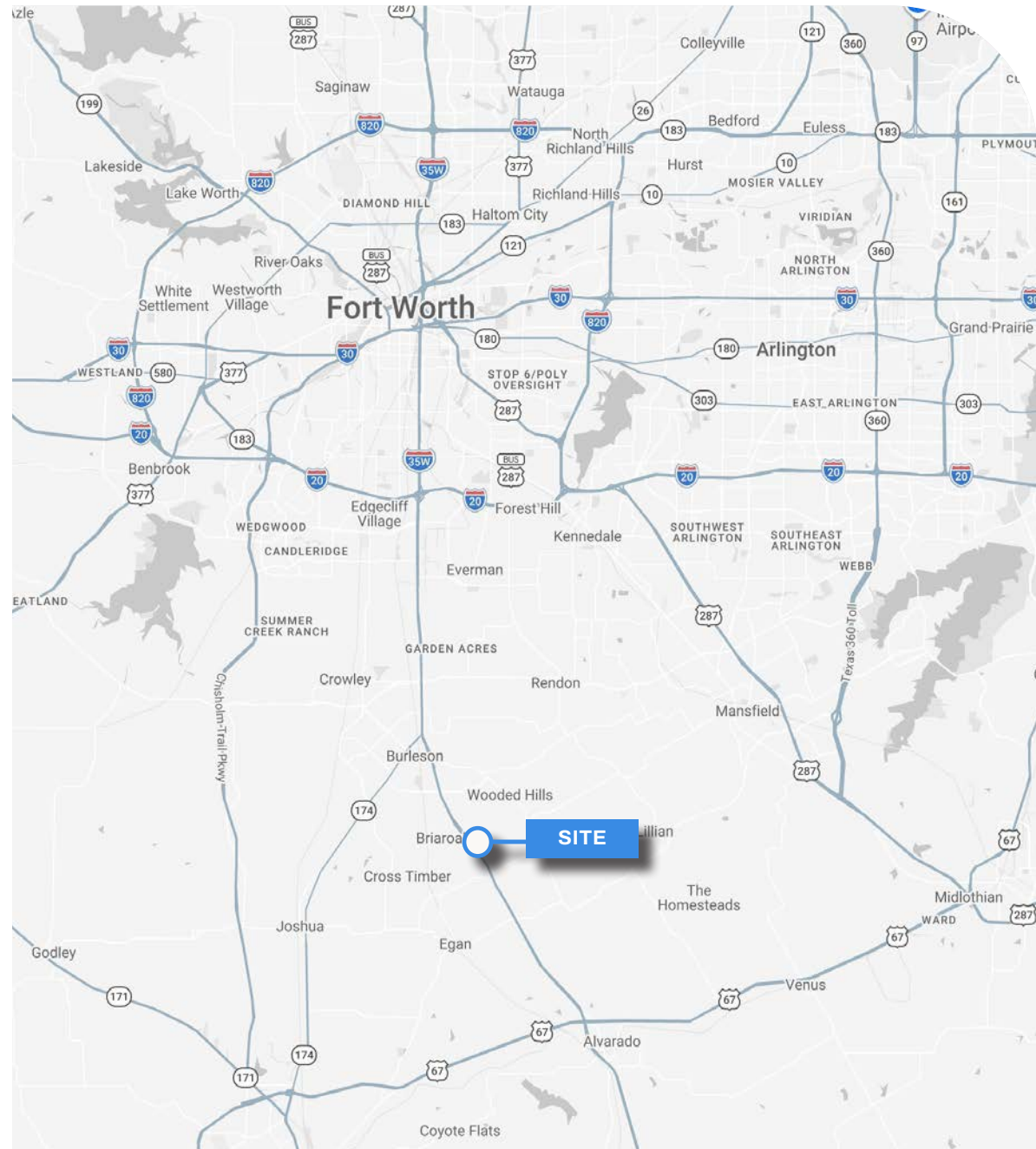


# About the Property

## PROPERTY INFORMATION

- Approximately 20 acres
- All utilities to site
- Located just north of North Texas Jellystone Park and Rustic Creek Ranch
- Excellent access to and from I-35
- Approximately 1,015 feet of interstate frontage

## AREA ATTRACTIONS



Chris Corbin

817-259-3503

[Chris.Corbin@Transwestern.com](mailto:Chris.Corbin@Transwestern.com)

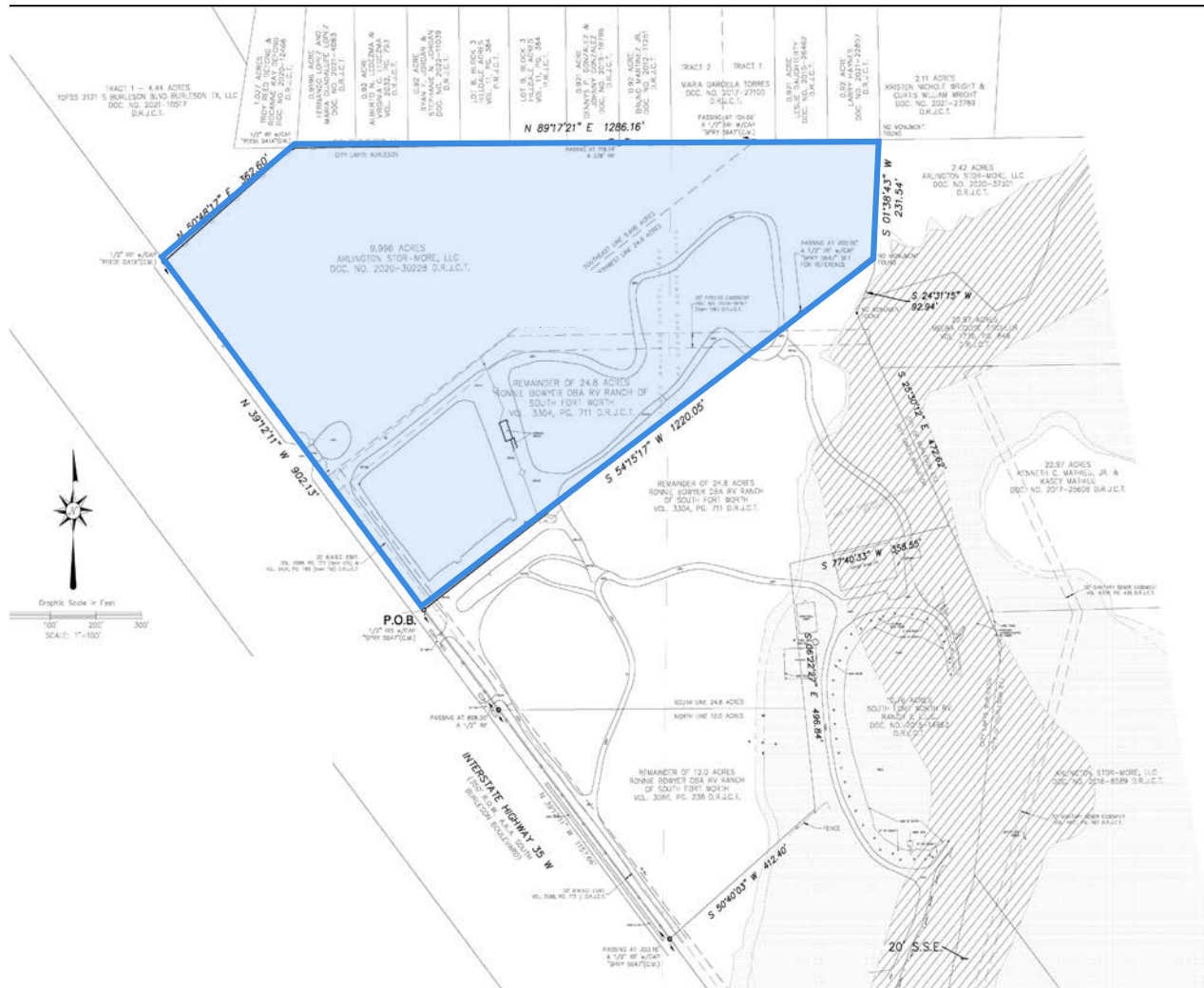
Ben McBroom

817-259-3538

[Ben.McBroom@transwestern.com](mailto:Ben.McBroom@transwestern.com)



# Survey



Chris Corbin

817-259-3503

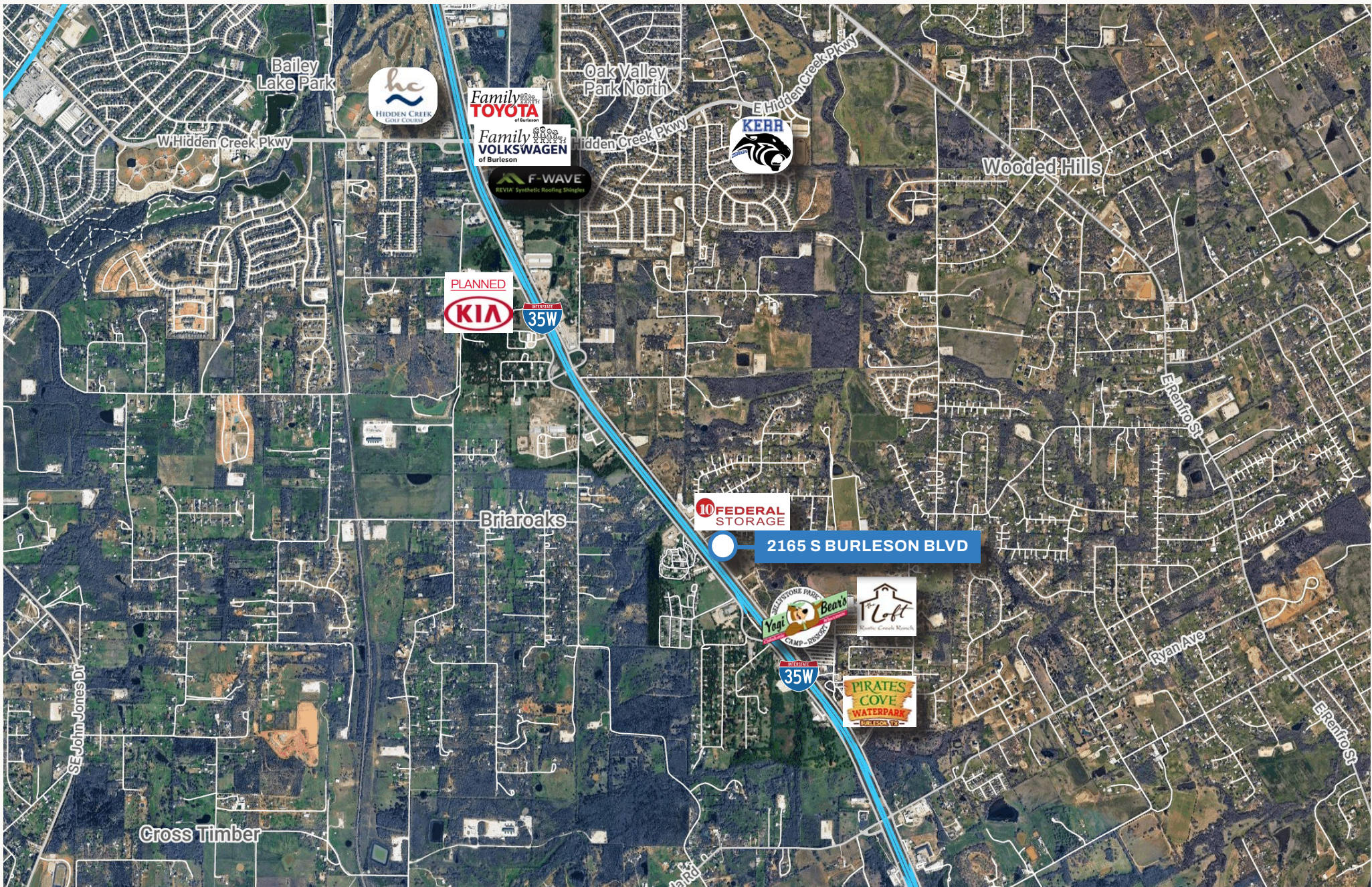
[Chris.Corbin@Transwestern.com](mailto:Chris.Corbin@Transwestern.com)

Ben McBroom

817-259-3538

[Ben.McBroom@transwestern.com](mailto:Ben.McBroom@transwestern.com)

 Transwestern



Chris Corbin

817-259-3503  
Chris.Corbin@Transwestern.com

Ben McBroom

817-259-3538  
Ben.McBroom@transwestern.com



# Demographics

1 MILE

18,643

POPULATION

6,729

HOUSEHOLDS

\$104,148

MEDIAN HOUSEHOLD INCOME

\$129,912

AVERAGE HOUSEHOLD INCOME

39.3

MEDIAN AGE

3 MILES

66,790

POPULATION

24,468

HOUSEHOLDS

\$101,372

MEDIAN HOUSEHOLD INCOME

\$128,650

AVERAGE HOUSEHOLD INCOME

37.7

MEDIAN AGE

5 MILES

266,171

POPULATION

90,978

HOUSEHOLDS

\$96,799

MEDIAN HOUSEHOLD INCOME

\$122,804

AVERAGE HOUSEHOLD INCOME

35.1

MEDIAN AGE



# Get in Touch

Chris Corbin

817-259-3503

[Chris.Corbin@transwestern.com](mailto:Chris.Corbin@transwestern.com)

Ben McBroom

817-259-3538

[Ben.McBroom@transwestern.com](mailto:Ben.McBroom@transwestern.com)