

14 W. Main Street

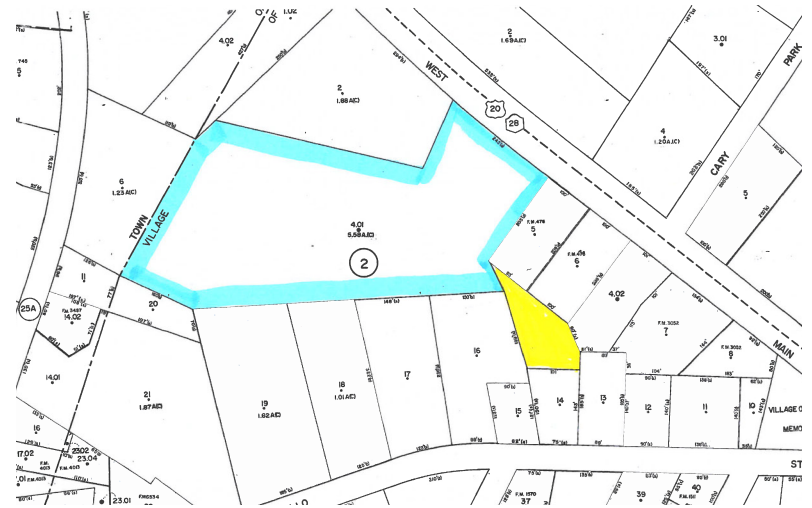
Richfield Springs, New York 13439

\$200,000



Property Highlights

- + 5.16 AC well suited for retail, multi-housing, and senior housing
- + 245' of frontage along U.S. Route 20
- + All public utilities
- + 5,319 AADT (NYSDOT)



Area Demographics By Drive Time	5 min.	10 min.	15 min.	20 min.
Total Population	1,571	3,228	10,018	31,443
Avg. Household Income	\$72,711	\$78,074	\$79,429	\$78,949



Contact Us

Martin Dowd
Lic. Associate Real Estate Broker
+1 315 422 4200 x 316
martin.dowd@cbre-syr.com

Mark Rupprecht, CCIM
Lic. Associate Real Estate Broker
+1 315 422 4200 x 316
mark.rupprecht@cbre-syr.com

CBRE Upstate NY
500 Plum Street, Ste. 402
Syracuse, New York 13204
+1 315 422 4200

© 2024 CBRE Upstate NY, part of the CBRE Affiliate Network. All rights reserved. This information has been obtained from sources believed reliable, but has not been verified for accuracy or completeness. You should conduct a careful, independent investigation of the property and verify all information. Any reliance on this information is solely at your own risk. CBRE Upstate NY and the CBRE Upstate NY logo are service marks of CBRE Upstate NY. All other marks displayed on this document are the property of their respective owners, and the use of such logos does not imply any affiliation with or endorsement of CBRE Upstate NY. Photos herein are the property of their respective owners. Use of these images without the express written consent of the owner is prohibited.