



OFFICE SPACE
1,500 SF FOR LEASE



19222 STONEHUE, SAN ANTONIO, TX 78258

 **TRANSWESTERN** REAL ESTATE SERVICES



Stonehue Rd

BUILDING HIGHLIGHTS

Situated at the prominent intersection of Stone Oak Pkwy and Stonehue road, 19222 Stonehue offers highly visible, second-generation space ideal for a variety of uses. The property features abundant natural light, Spanish architecture, and high ceilings. Tenants will enjoy incredible views of Sonterra Golf Course that sits directly behind the property.



19222 Stonehue is located in the premier Far North Central submarket with top demographic access



Second generation office spaces prepared for immediate occupancy



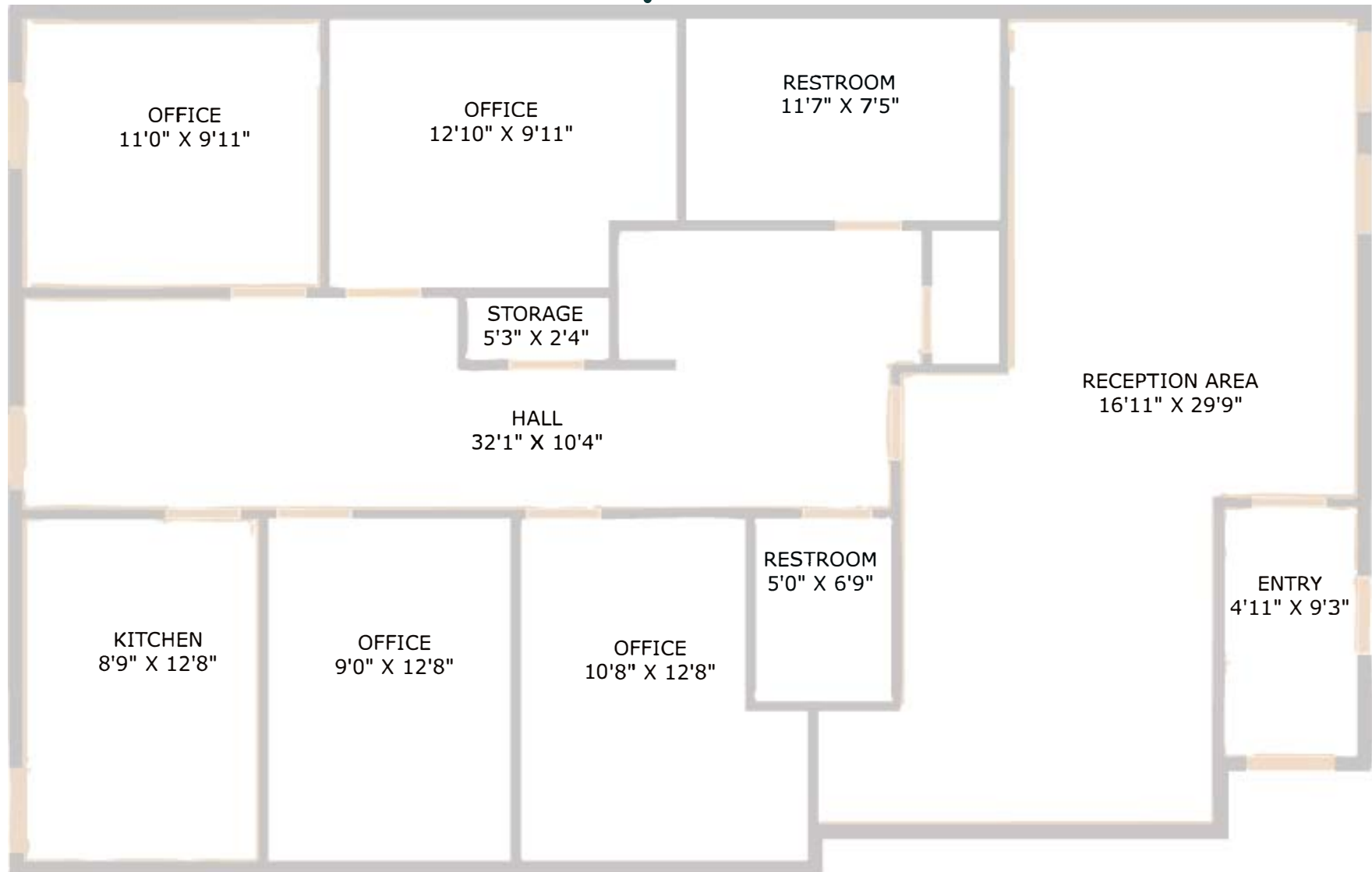
Conveniently located in Stone Oak with quick access to Loop 1604 & Hwy 281



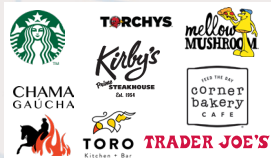
Abundant nearby restaurants, retail and entertainment

SUITE 104

±1,500 SF



AREA AMENITIES





19222 STONEHUE, SAN ANTONIO, TX 78258

 **TRANSWESTERN** REAL ESTATE SERVICES

CHRIS THOMPSON

P: 210.200.8644

E: Chris.Thompson@transwestern.com