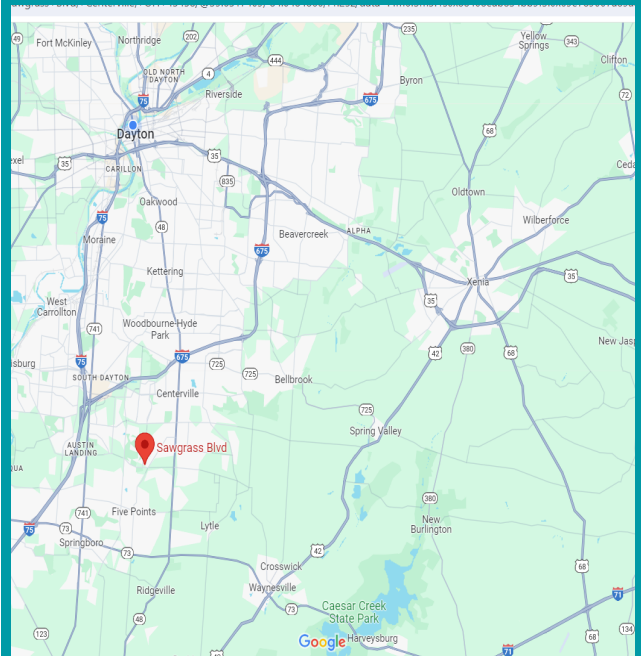




PROPERTY HIGHLIGHTS

- 9.88 acres
- Zoning: PUD Residential single family homes 3.5 units per acre.
- Land adjacent to Sheehan and Sawgrass can be developed.
- Hard to find land available for Residential development in Centerville.
- Per Centerville Economic Development Administrator- 3.5 units per acre can be built on this land.
- Developer can use existing detention pond.

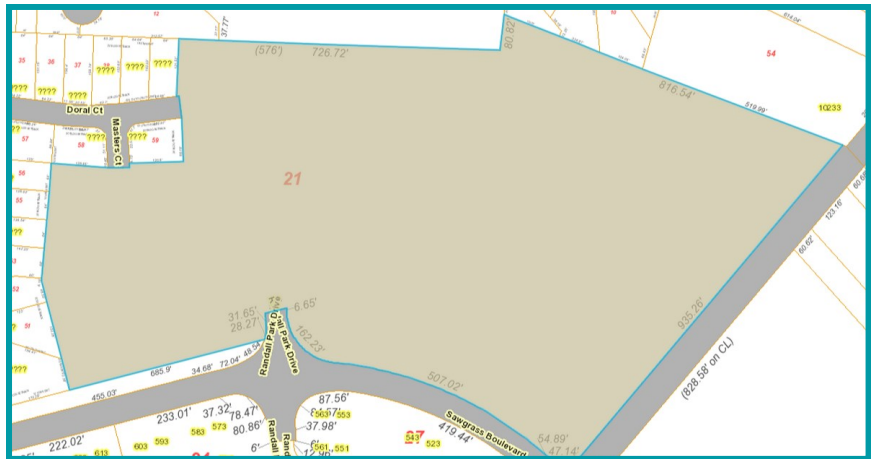
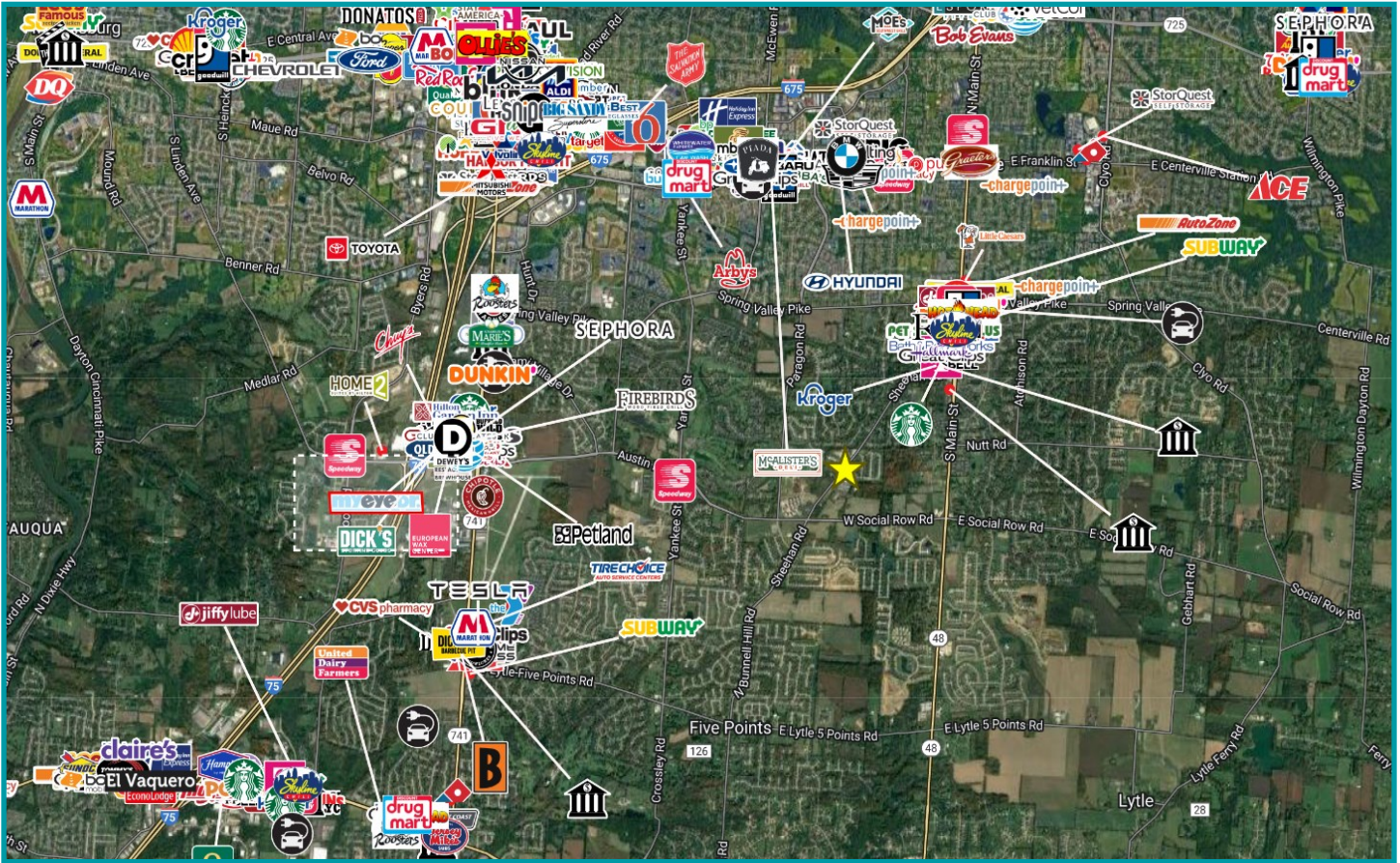


For More Information, Please Contact:

Ron Beech | Senior Associate
Mobile: 937.672.7100
ronmbeech@gmail.com

Residential Development Land For Sale

SHEEHAN ROAD, CENTERVILLE, OH 45458



DEMOGRAPHICS	1 Mile	3 Miles	5 Miles
Population	6,681	60,723	131,322
Average HH Income	\$130,601	\$160,717	\$147,128
Daytime Population	3,126	26,764	68,985

www.equity.net | 937.291.1179 | 11 West Monument Avenue, Suite 506, Dayton, Ohio 45402

Residential Development Land For Sale

SHEEHAN ROAD, CENTERVILLE, OH 45458

