

2655 OAKLEY PARK ROAD
COMMERCE TWP., MICHIGAN

OFFICE FOR SALE OR LEASE
For Lease: 1,906 - 7,504 Square Feet



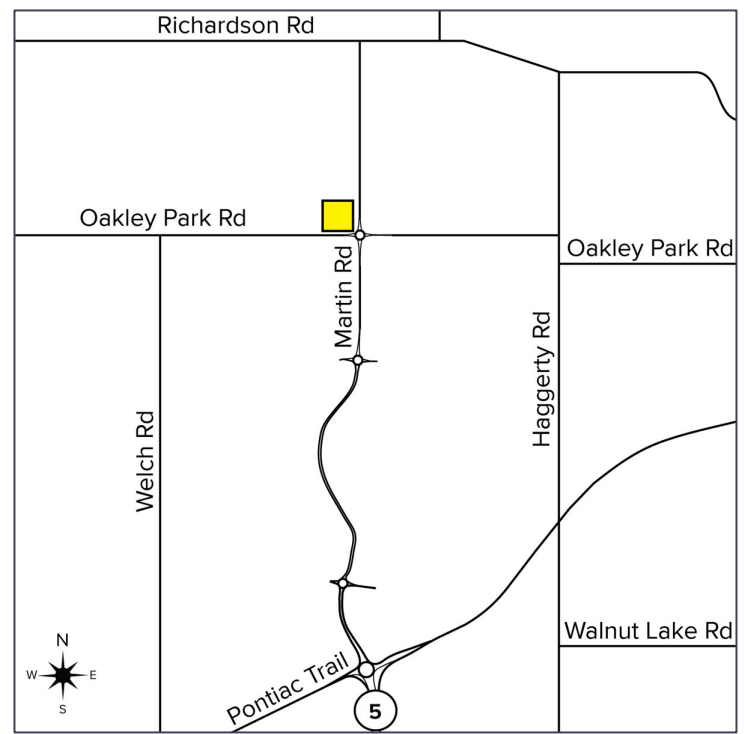
**SIGNATURE
ASSOCIATES**
KNOW SIGNATURE | KNOW RESULTS

COMMERCE CENTER



PROPERTY FEATURES

- 1,906 – 7,504 square foot suites available
- 28,403 total building square footage
- Impeccable office building with modern design and finishes throughout
- High visibility location
- Ample parking
- Wooded area creates a park-like atmosphere
- A must see building!
- Lease Rate: \$18.00/sq. ft. G + E



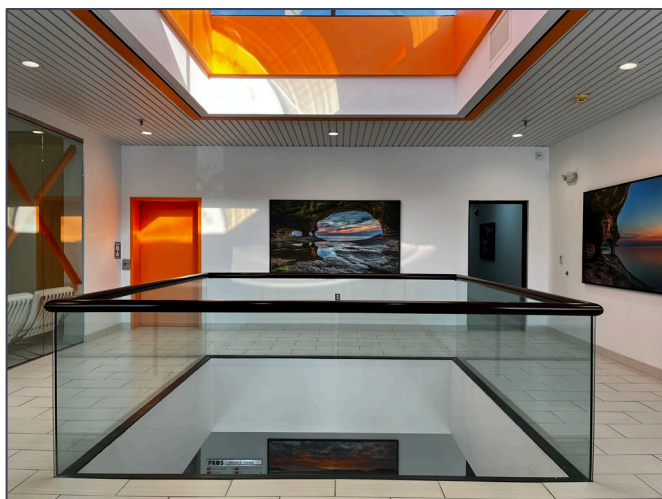
For more information, please contact:

JASON STOUGH
(248) 948 4180
jstough@signatureassociates.com

JEFF LEMANSKI
(248) 359 0641
jlemanski@signatureassociates.com

JOHN BOYD
(248) 948 0102
jboyd@signatureassociates.com

Common Area Photos



For more information, please contact:

JASON STOUGH
(248) 948 4180
jstough@signatureassociates.com

JEFF LEMANSKI
(248) 359 0641
jlemanski@signatureassociates.com

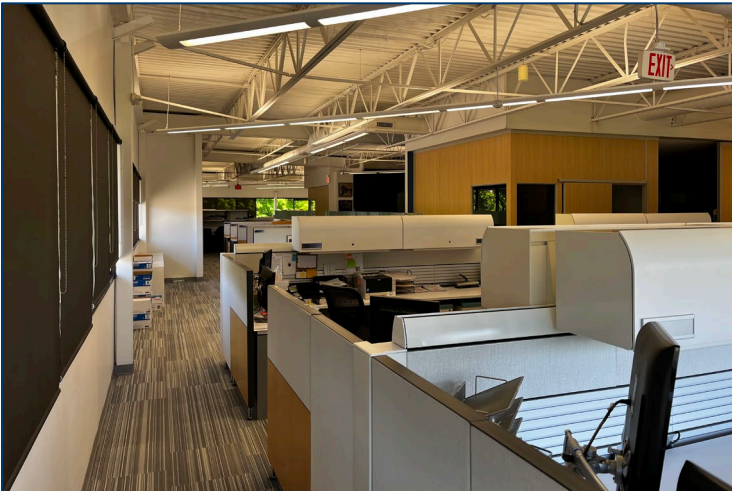
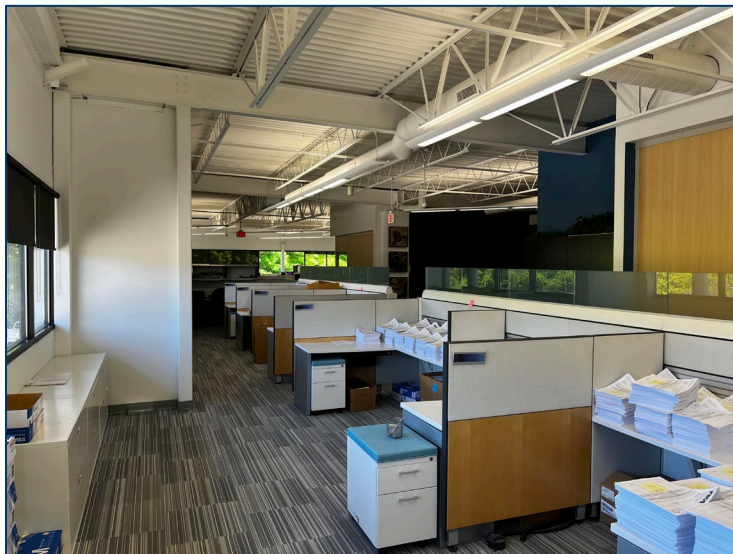
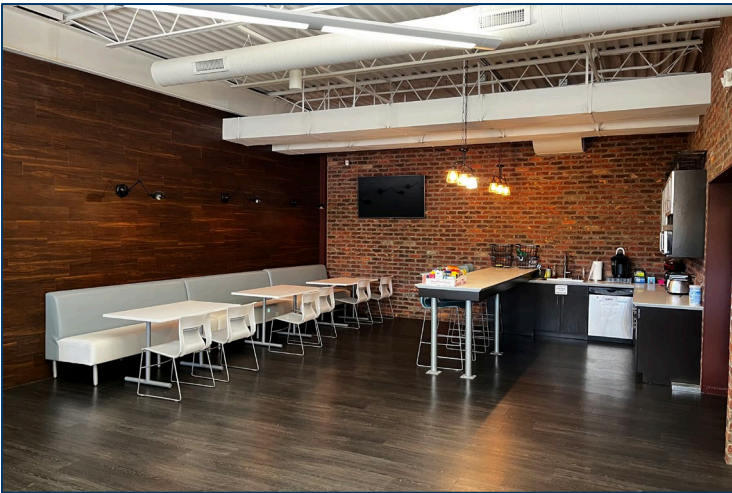
JOHN BOYD
(248) 948 0102
jboyd@signatureassociates.com

2655 Oakley Park Road – Commerce Twp., Michigan

Office For Sale or Lease

1,906 – 7,504
Square Feet
AVAILABLE

Suite 200 Photos



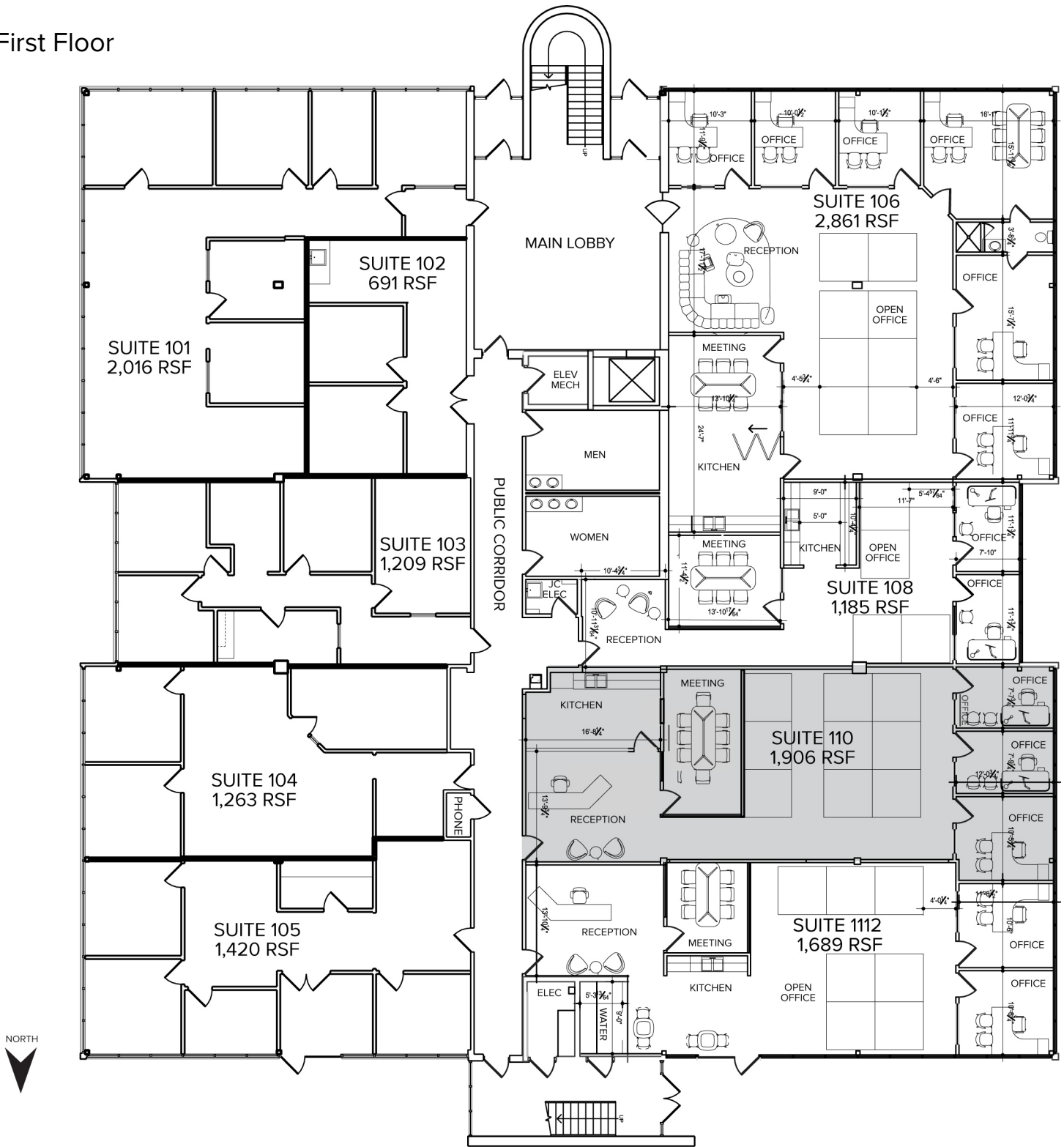
For more information, please contact:

JASON STOUGH
(248) 948 4180
jstough@signatureassociates.com

JEFF LEMANSKI
(248) 359 0641
jlemanski@signatureassociates.com

JOHN BOYD
(248) 948 0102
jboyd@signatureassociates.com

First Floor



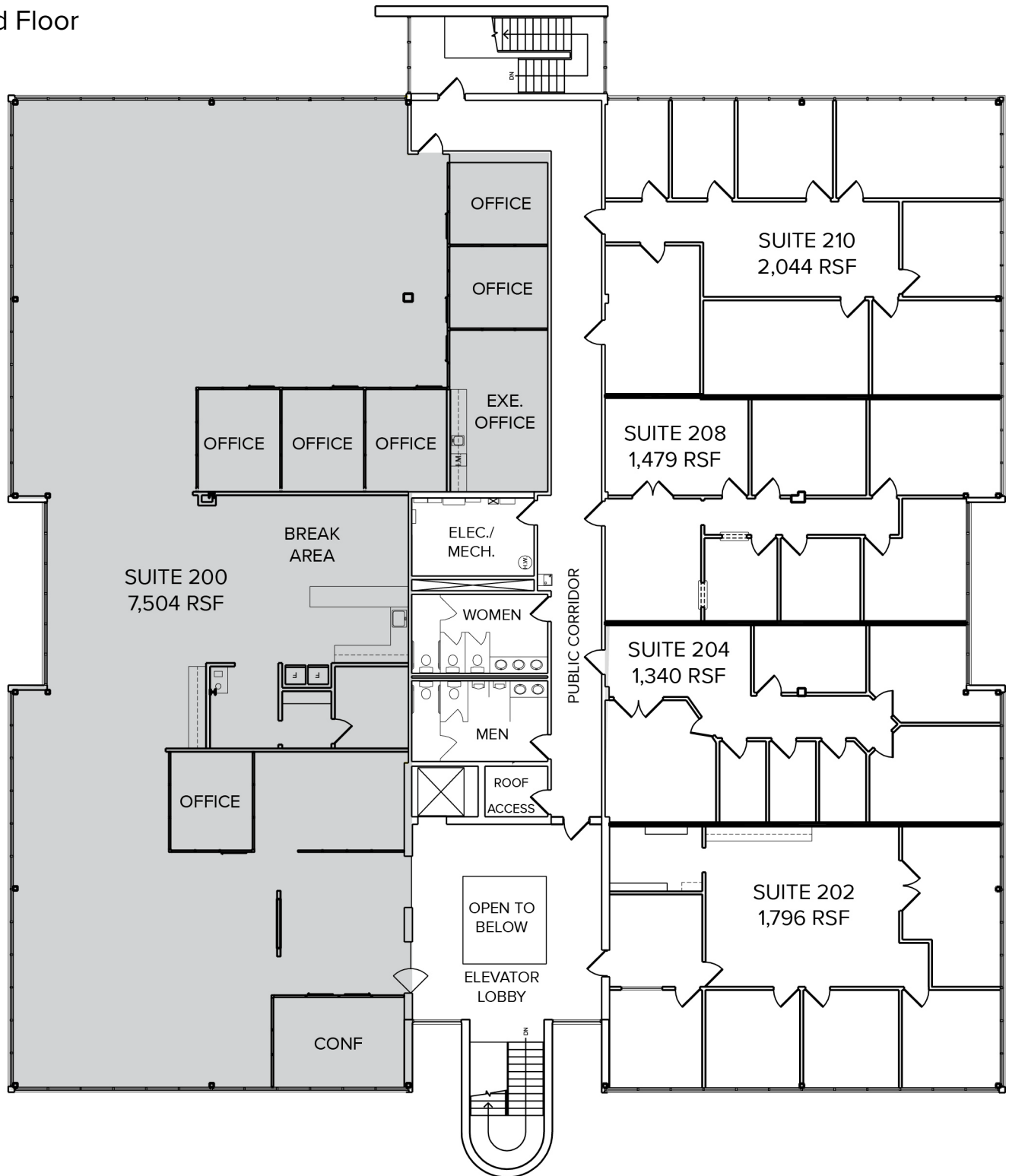
For more information, please contact:

JASON STOUGH
(248) 948 4180
jstough@signatureassociates.com

JEFF LEMANSKI
(248) 359 0641
jlemanski@signatureassociates.com

JOHN BOYD
(248) 948 0102
jboyd@signatureassociates.com

Second Floor



For more information, please contact:

JASON STOUGH
(248) 948 4180
jstough@signatureassociates.com

JEFF LEMANSKI
(248) 359 0641
jlemanski@signatureassociates.com

JOHN BOYD
(248) 948 0102
jboyd@signatureassociates.com