



# OFFICE SPACE FOR LEASE

2001 Park Place North, Birmingham, AL 35203

Office space for lease in ideal Birmingham legal/financial district location

## PROPERTY HIGHLIGHTS

Located in the heart of downtown Birmingham's legal and financial district, Renasant Place has rare space opportunities to accommodate a wide range of needs. Whether you are looking for 500/sf or 50,000/sf, Renasant Place is the perfect business address for your company.

- Southwest corner of Park Place North and 20th Street
- Immediate access to I-20/59, I-65 and Red Mtn Expressway
- Walking distance to City Hall, Jefferson County Courthouse, the Tutwiler Hotel, the Library, the Museum of Art and Uptown
- Convenient access to Birmingham-Shuttlesworth International Airport
- 24-hour security
- Proactive management located on-site

• **Amenities:**

Tenant Conference and Training Rooms; Virtual Grab-n-Go Cantina, Tenant Breakroom; On-site Storage; Fitness Facility; Tenant Recreation Area and Outside Seating.



**ASKING RATE:**  
\$22.50/SF Full Service



**FLOOR PLATES:**  
20,000 SF  
Versatile Floor Plates



**LOCATION:**  
Conveniently located on Park Place North & 20th St



**BUILDING SPECS:**  
15-stories  
284,189 SF



**CAPITAL IMPROVEMENTS:**  
\$5,000,000 Capital improvements Ongoing



 View the Drone Video

[RenasantPlace.com](http://RenasantPlace.com)



**WEST HARRIS**  
wharris@harbertrealty.com | 205.458.8127

**For More Information: HarbertRealty.com**  
2 North 20th Street, #1700, Birmingham, AL 35203

The information contained herein has been obtained from sources deemed reliable, however, HRS makes no guarantees, warranties or representation as to its completeness or accuracy thereof. The presentation of this property is submitted subject to errors, omissions, change of price or conditions, prior to sale or lease or withdrawal without notice.



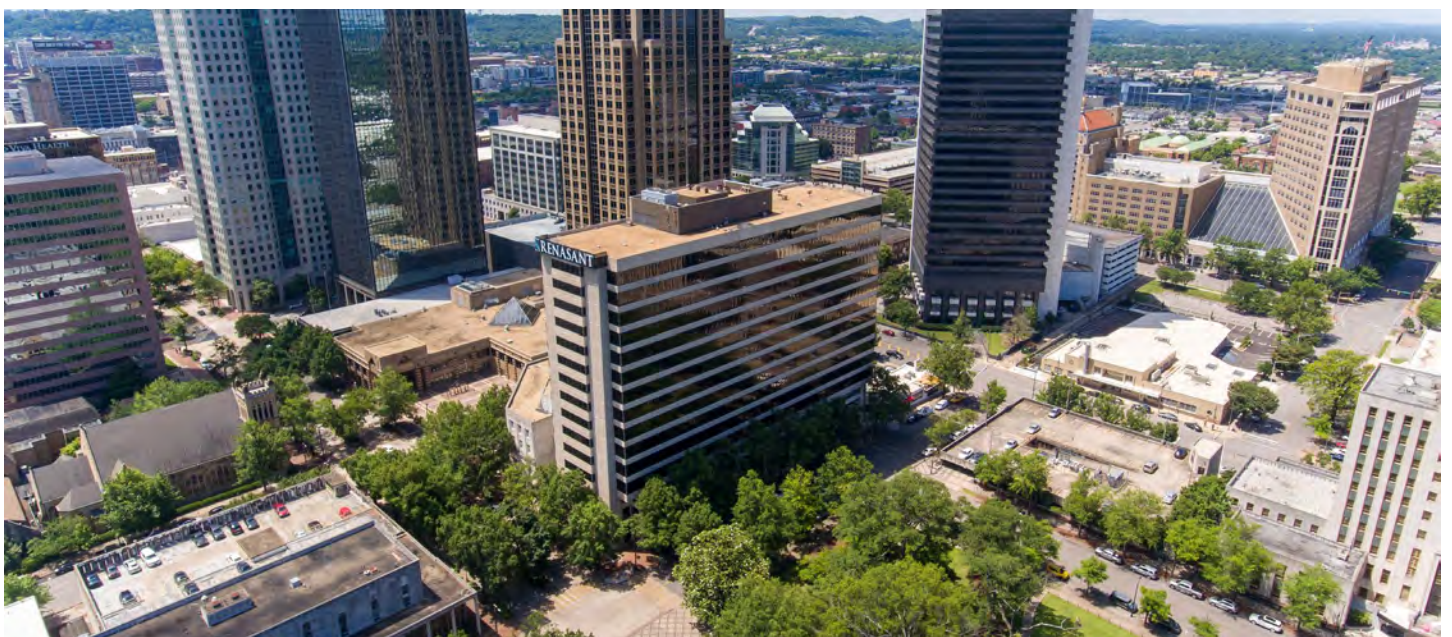




# OFFICE SPACE FOR LEASE

2001 Park Place North, Birmingham, AL 35203

Incredible Views



**HARBERT**  
REALTY SERVICES

**WEST HARRIS**

wharris@harbertrealty.com | 205.458.8127

***For More Information: HarbertRealty.com***

**2 North 20th Street, #1700, Birmingham, AL 35203**

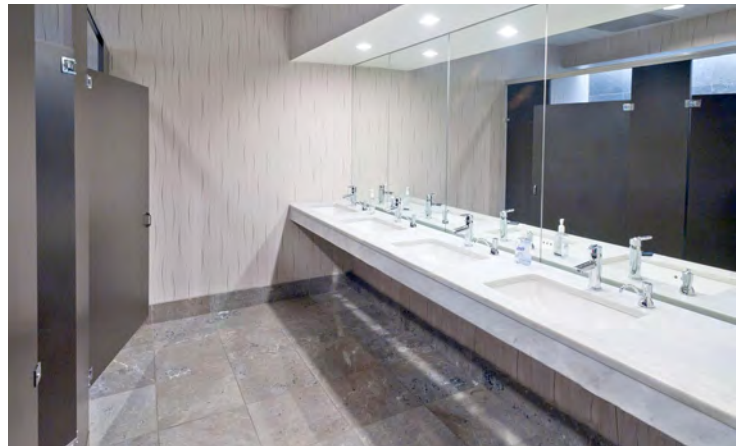
The information contained herein has been obtained from sources deemed reliable, however, HRS makes no guarantees, warranties or representation as to its completeness or accuracy thereof. The presentation of this property is submitted subject to errors, omissions, change of price or conditions, prior to sale or lease or withdrawal without notice.



# OFFICE SPACE FOR LEASE

2001 Park Place North, Birmingham, AL 35203

Modern Finishes



**Lobby Renovations Coming Soon!**



WEST HARRIS  
wharris@harbertrealty.com | 205.458.8127

*For More Information: HarbertRealty.com*  
2 North 20th Street, #1700, Birmingham, AL 35203

The information contained herein has been obtained from sources deemed reliable, however, HRS makes no guarantees, warranties or representation as to its completeness or accuracy thereof. The presentation of this property is submitted subject to errors, omissions, change of price or conditions, prior to sale or lease or withdrawal without notice.



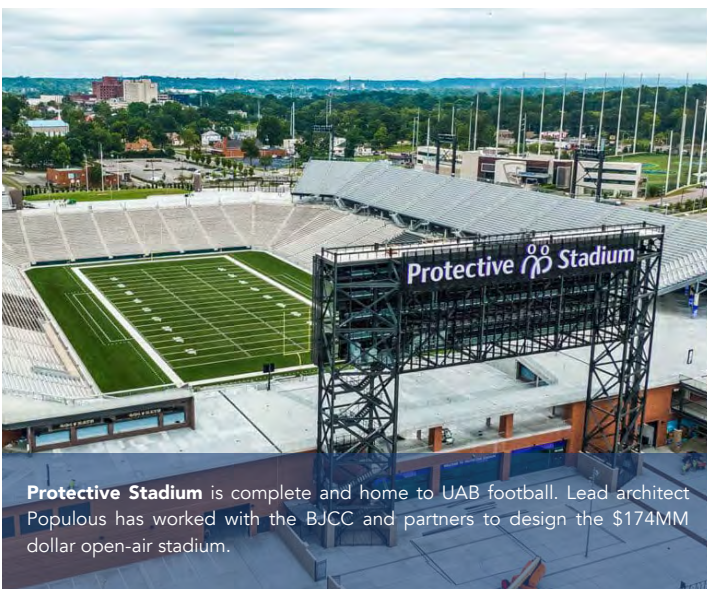
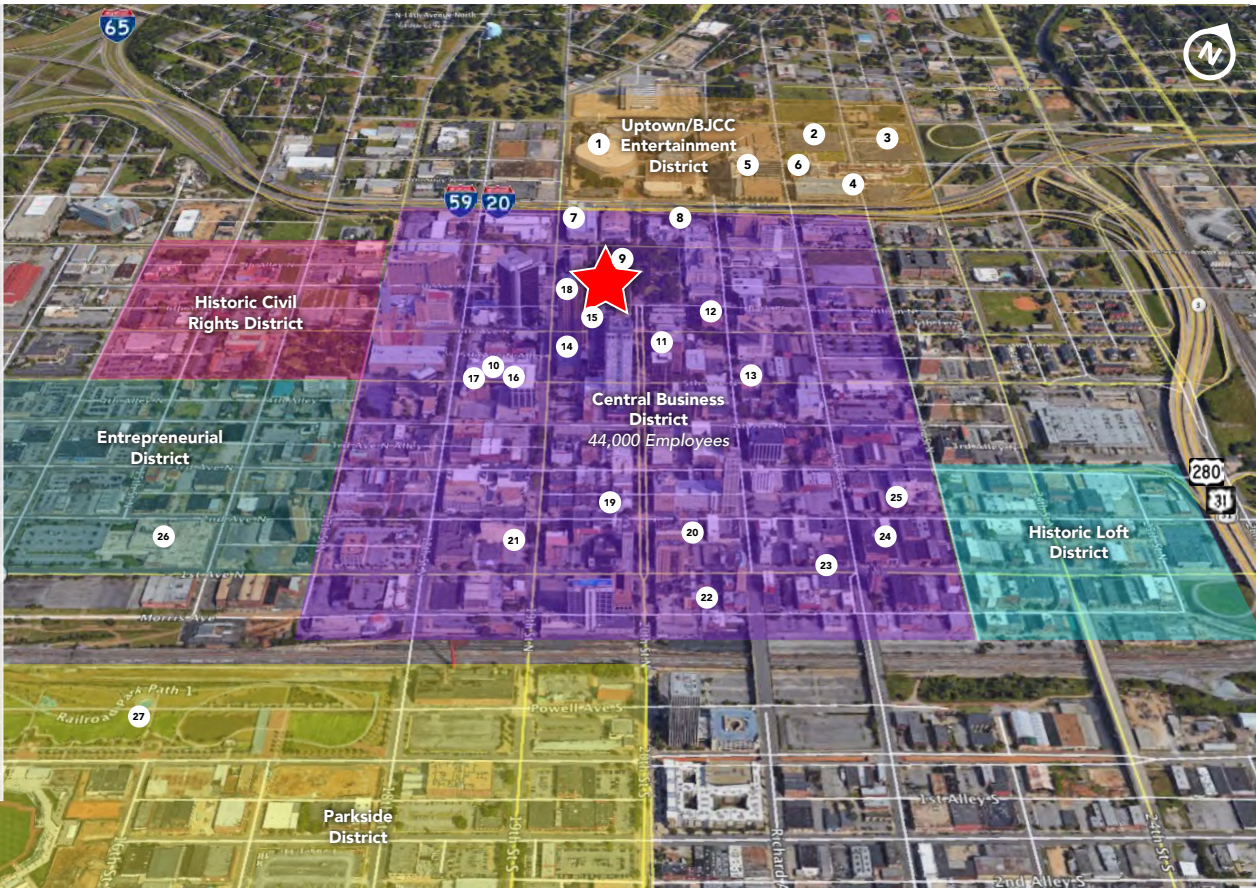
# OFFICE SPACE FOR LEASE

2001 Park Place North, Birmingham, AL 35203

Awesome Amenities

## AREA AMENITIES

- 1 BJCC
- 2 Protective Stadium (\$174M Project)
- 3 TopGolf
- 4 Uptown
- 5 Sheraton Hotel
- 6 The Westin Hotel
- 7 Boutwell Auditorium
- 8 Birmingham Museum of Art
- 9 City Hall/Jefferson County Courthouse
- 10 Federal Courthouse
- 11 Edgars
- 12 Tutwiler Hotel
- 13 Redmont Hotel
- 14 Chick-Fil-A
- 15 24 E Health Club
- 16 Zoe's Kitchen
- 17 Urban Cookhouse
- 18 Summit Club
- 19 Paramount Bar
- 20 Helen
- 21 The Pizitz Food hall
- 22 Founders Station
- 23 The Atomic
- 24 El Barrio
- 25 Bamboo on 2nd
- 26 Innovation Depot
- 27 Railroad Park
- 28 Regions Field



**Protective Stadium** is complete and home to UAB football. Lead architect Populous has worked with the BJCC and partners to design the \$174MM dollar open-air stadium.



The \$123MM renovations and expansion of Legacy Arena have already started to pay off. The New Orleans Pelicans franchise moved its NBA G League team to Birmingham in 2022 and the NCAA men's basketball tournament returned to the Magic City in 2023.



**HARBERT**  
REALTY SERVICES

**WEST HARRIS**  
wharris@harbertrealty.com | 205.458.8127

**For More Information: HarbertRealty.com**  
2 North 20th Street, #1700, Birmingham, AL 35203

The information contained herein has been obtained from sources deemed reliable, however, HRS makes no guarantees, warranties or representation as to its completeness or accuracy thereof. The presentation of this property is submitted subject to errors, omissions, change of price or conditions, prior to sale or lease or withdrawal without notice.




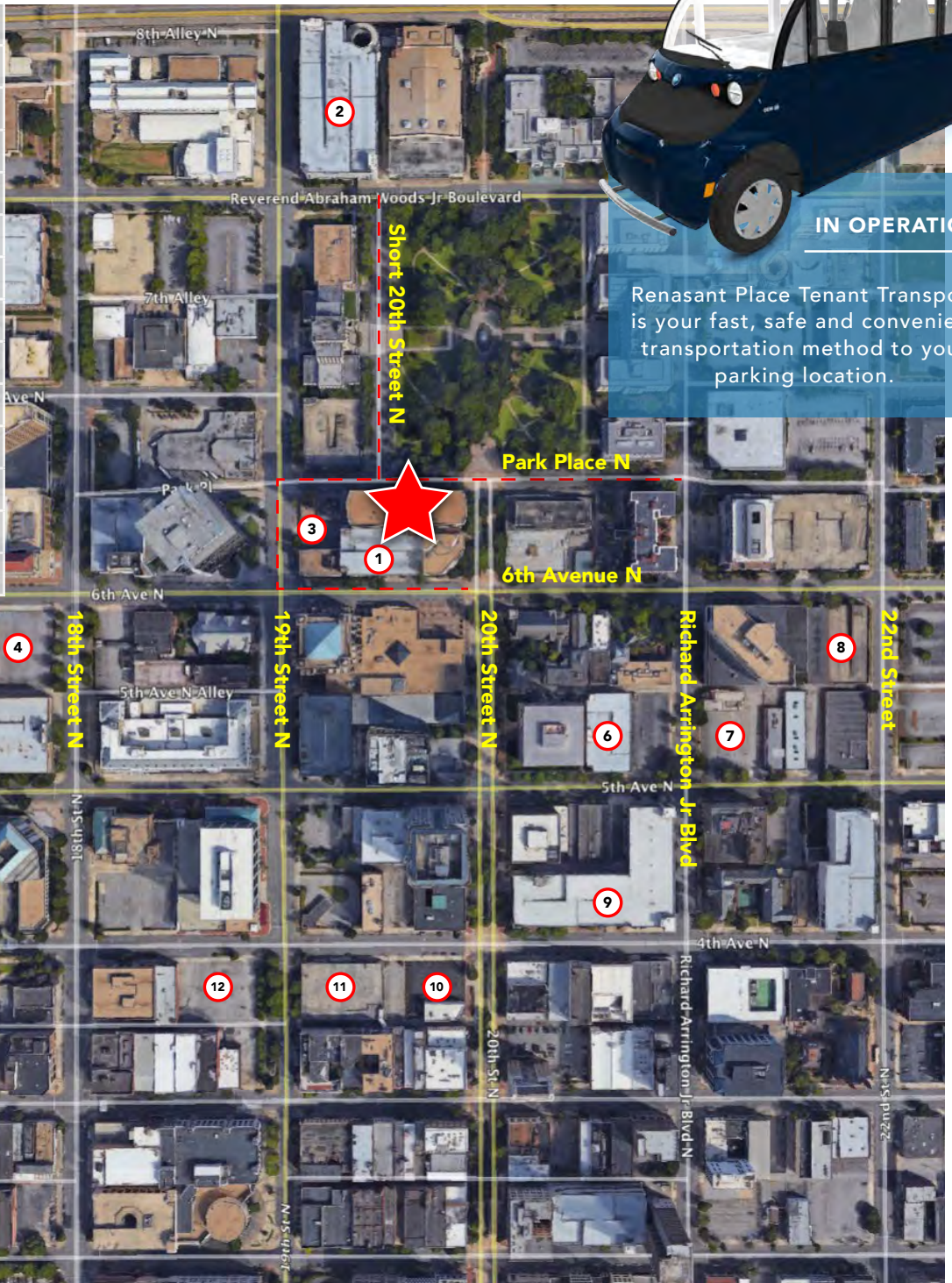
# OFFICE SPACE FOR LEASE

2001 Park Place North, Birmingham, AL 35203

Nearby Convenience

## PARKING OPTIONS IN CLOSE PROXIMITY

	Parking Options
1	Renasant Place Deck
2	BPA Deck 2
3	AAB Lot
4	SP+ Parking
5	BPA Deck 7
6	BPA Deck 5
7	SP+ Parking
8	Premium Parking
9	BPA Deck 3
10	Premium Parking
11	Park Rite Deck
12	SP+ Parking
	Metered Street Parking



**IN OPERATION!**

Renasant Place Tenant Transport is your fast, safe and convenient transportation method to your parking location.



WEST HARRIS  
wharris@harbertrealty.com | 205.458.8127

For More Information: [HarbertRealty.com](http://HarbertRealty.com)  
2 North 20th Street, #1700, Birmingham, AL 35203

The information contained herein has been obtained from sources deemed reliable, however, HRS makes no guarantees, warranties or representation as to its completeness or accuracy thereof. The presentation of this property is submitted subject to errors, omissions, change of price or conditions, prior to sale or lease or withdrawal without notice.