

[naiselect.com](http://naiselect.com)

**5500 W FRANKLIN RD**  
**BOISE, ID 83705**

RESTAURANT | RETAIL | OFFICE | DAYCARE  
FOR SALE OR FOR LEASE

**NAI**Select





### PROPERTY INFORMATION

<b>PROPERTY TYPE</b>	Retail / Restaurant / Office
<b>LEASE RATE</b>	<b>\$16.00 SF/annually</b>
<b>SALE PRICE</b>	<b>\$2,150,000</b>
<b>AVAILABLE SPACE</b>	±8,594 SF
<b>ADDRESS</b>	5500 W Franklin Road Boise, ID 83705
<b>LEASE TERM</b>	Negotiable
<b>LEASE TYPE</b>	NNN
<b>ZONING</b>	MX-2

### HIGHLIGHTS

- Centrally located bar & grill with Franklin Rd. frontage
- Large built-out kitchen space with two hoods
- Natural lighting with a yard & patio space, perfect for entertainment and events
- Full remodel in 2021
- Several roll-up doors for a versatile outdoor/indoor experience
- Furniture, Fixtures, and Equipment can be included
- Current zoning allows for a wide variety of uses
- Coded lockbox on site. Please contact agent for showing instructions

This information was obtained from sources believed reliable but cannot be guaranteed and is subject to change at any time. Any opinions or estimates are used for example only.

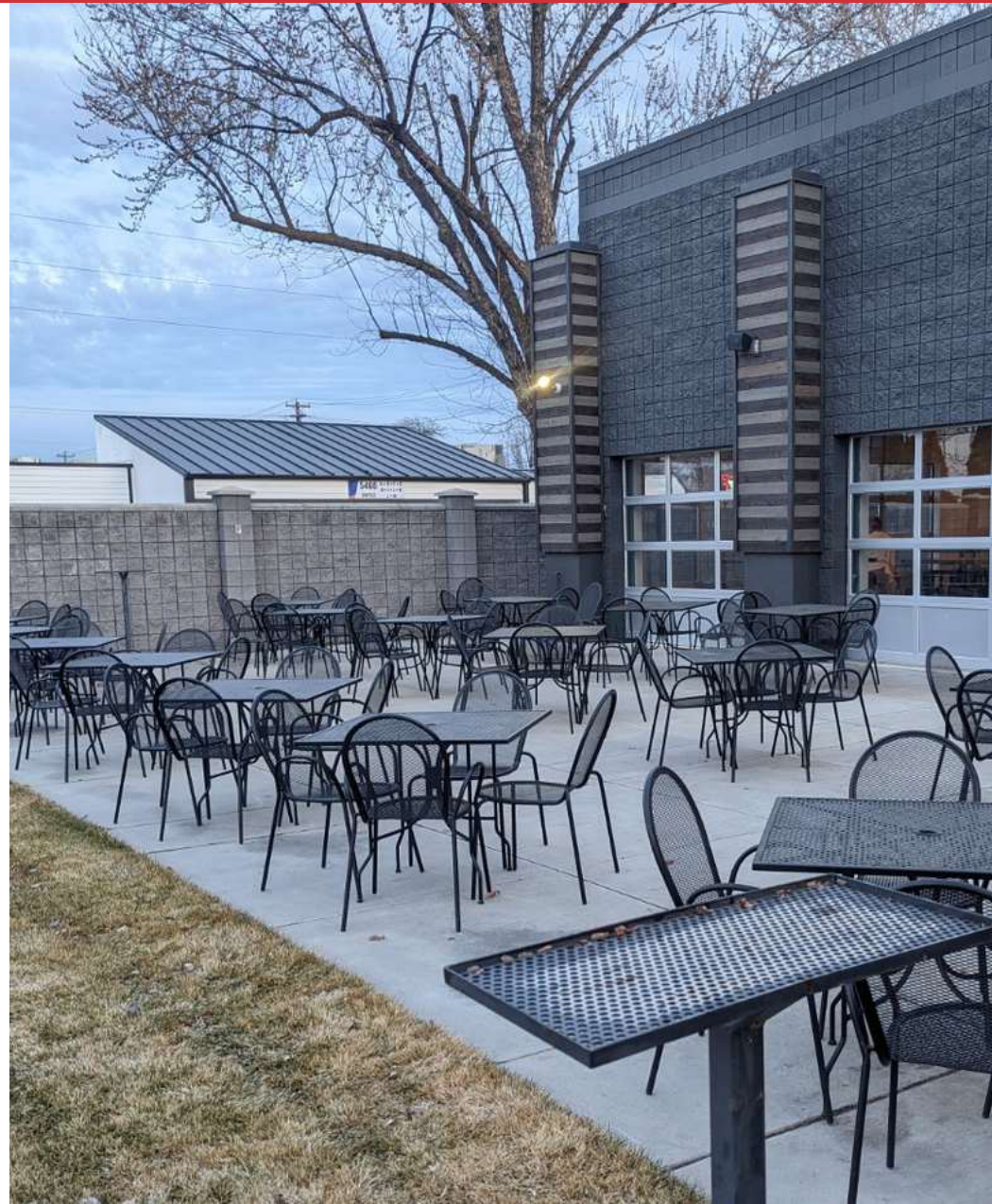
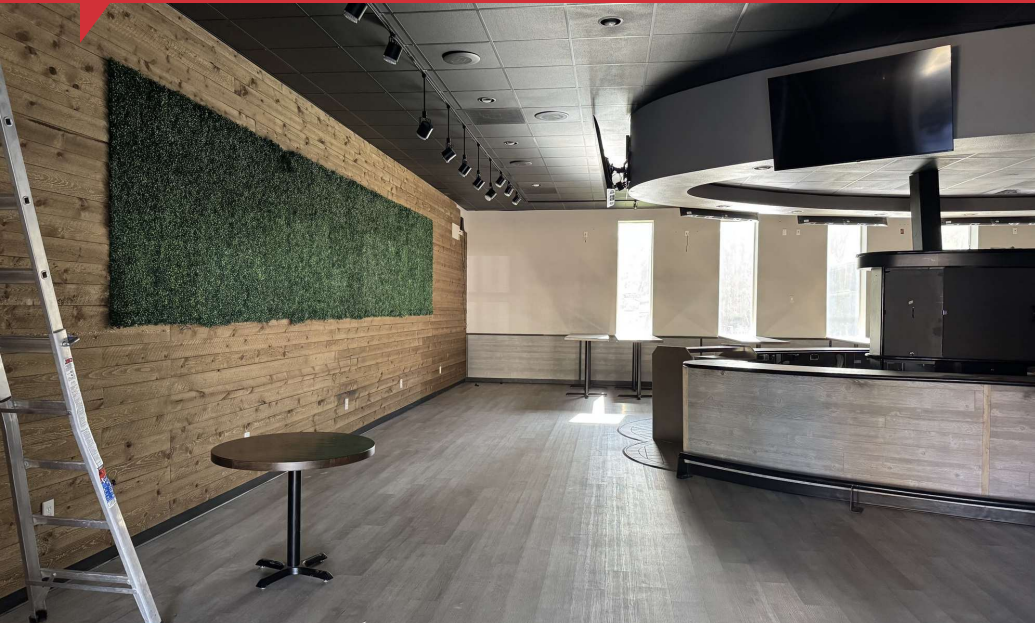
**MIKE ERKMANN, CCIM**  
208.229.6015 | [mike@naiselect.com](mailto:mike@naiselect.com)

**TRAVIS DUNN**  
208.229.6005 | [travis@naiselect.com](mailto:travis@naiselect.com)

**RILEY WIEDMEIER, MBA**  
208.954.2229 | [riley@naiselect.com](mailto:riley@naiselect.com)



**5500 W Franklin Rd** BOISE, ID



**MIKE ERKMANN, CCIM**  
208.229.6015 | [mike@naiselect.com](mailto:mike@naiselect.com)

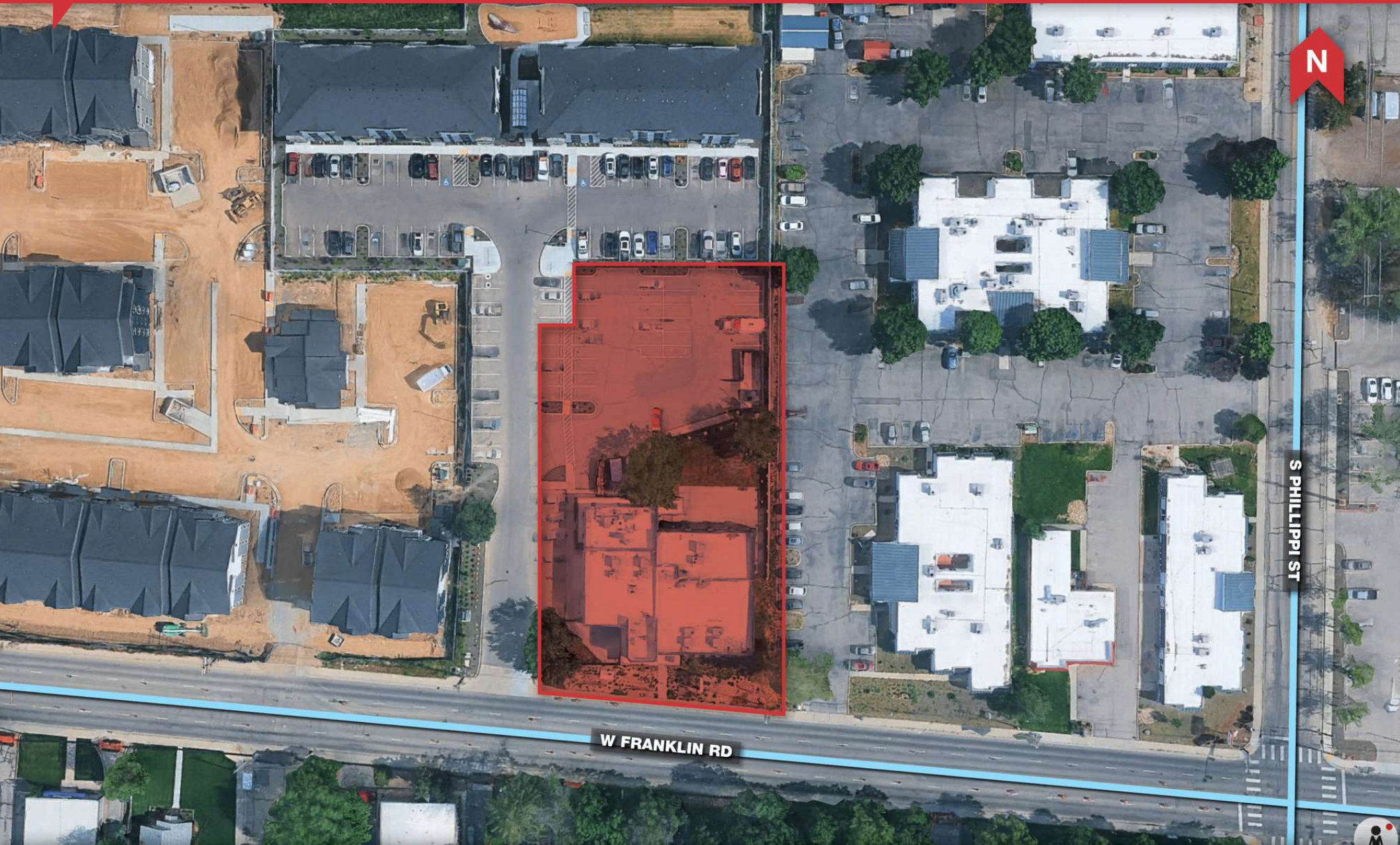
**TRAVIS DUNN**  
208.229.6005 | [travis@naiselect.com](mailto:travis@naiselect.com)

**RILEY WIEDMEIER, MBA**  
208.954.2229 | [riley@naiselect.com](mailto:riley@naiselect.com)

NAI SELECT | 5571 N. GLENWOOD ST., BOISE, ID 83714 | 208.229.2020

**NAI**Select



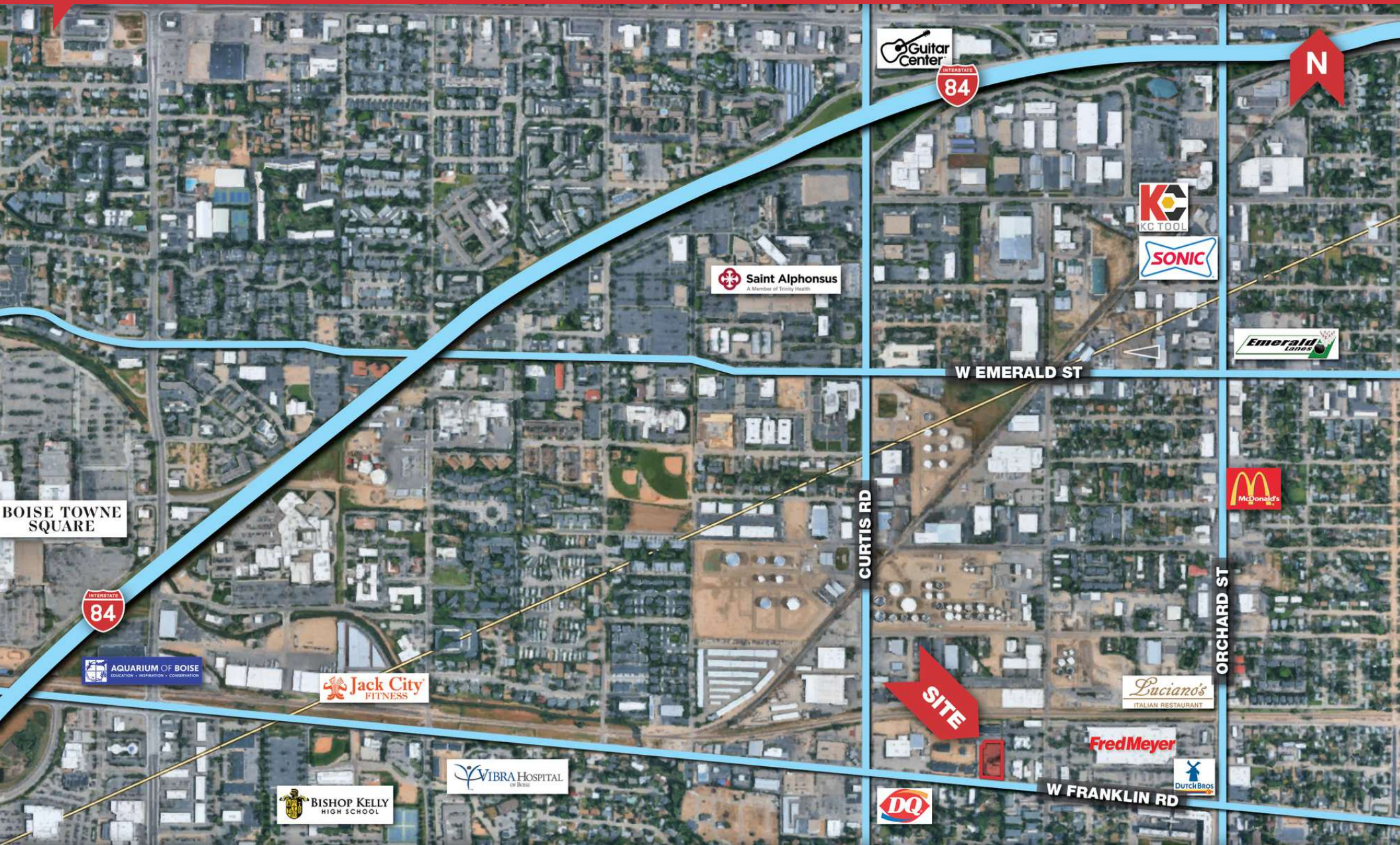


**MIKE ERKMANN, CCIM**  
208.229.6015 | [mike@naiselect.com](mailto:mike@naiselect.com)

**TRAVIS DUNN**  
208.229.6005 | [travis@naiselect.com](mailto:travis@naiselect.com)

**RILEY WIEDMEIER, MBA**  
208.954.2229 | [riley@naiselect.com](mailto:riley@naiselect.com)



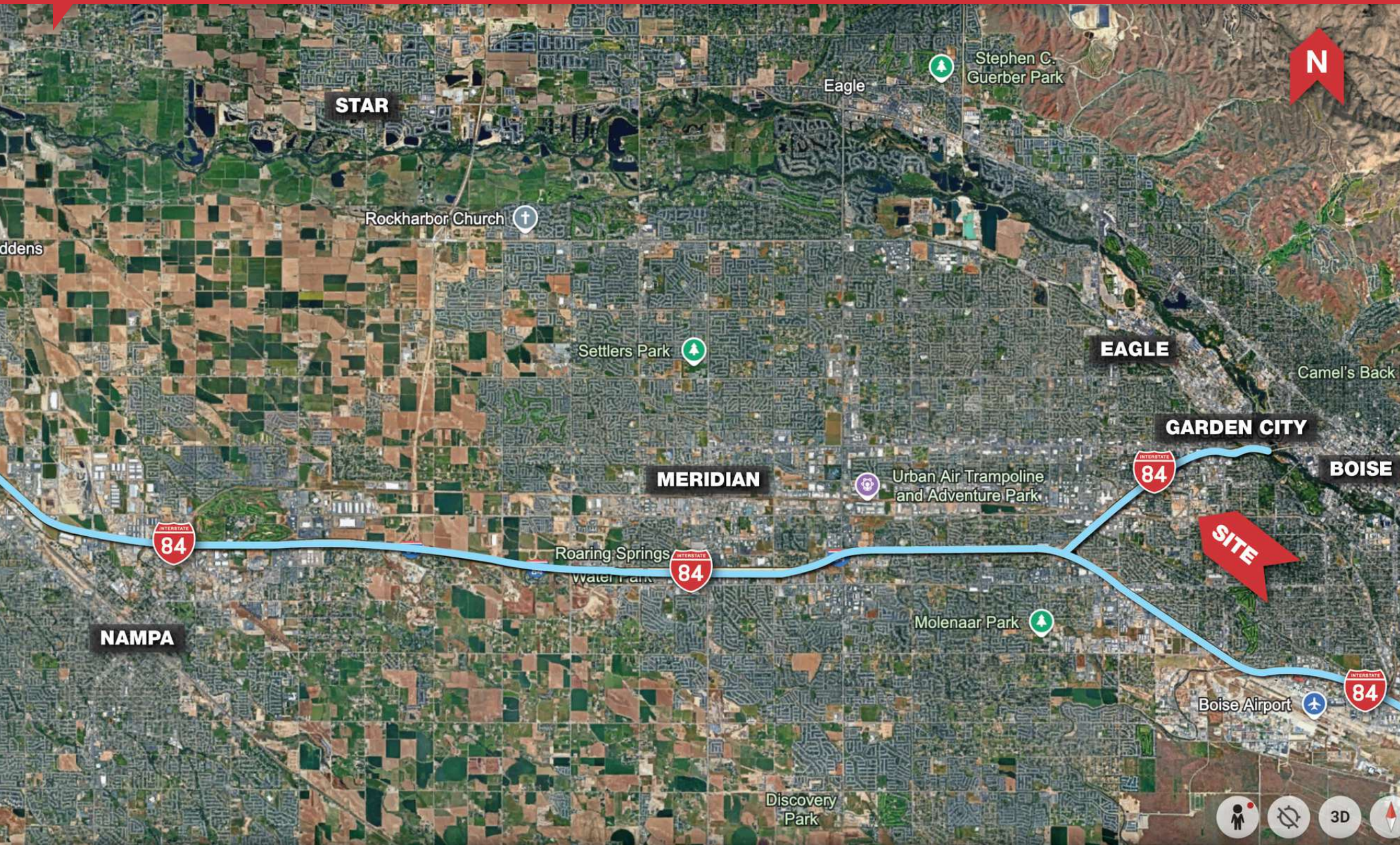


MIKE ERKMANN, CCIM  
208.229.6015 | mike@naiselect.com

TRAVIS DUNN  
208.229.6005 | travis@naiselect.com

RILEY WIEDMEIER, MBA  
208.954.2229 | riley@naiselect.com





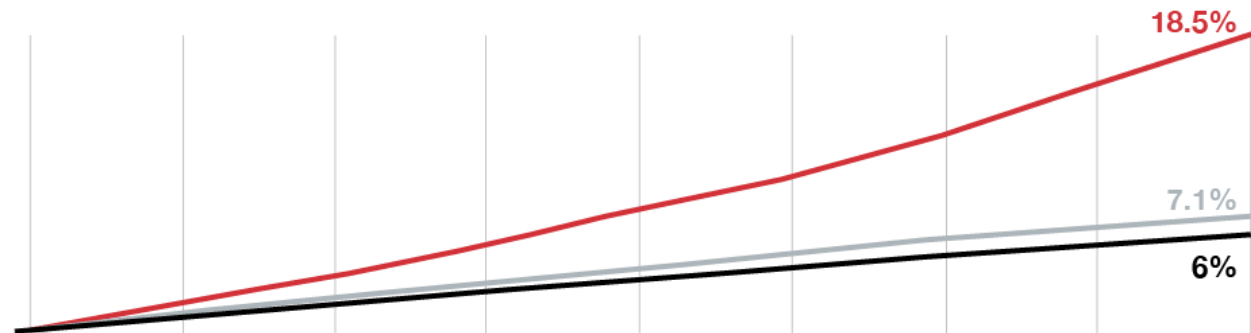
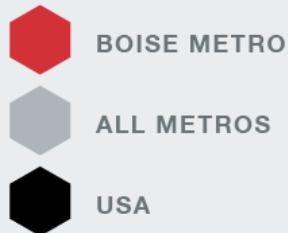
**MIKE ERKMANN, CCIM**  
208.229.6015 | mike@naiselect.com

**TRAVIS DUNN**  
208.229.6005 | travis@naiselect.com

**RILEY WIEDMEIER, MBA**  
208.954.2229 | riley@naiselect.com



## Population Growth 2010-2018



## Largest Private Sector Employers

From corporate headquarters to flourishing startups, the Boise Metro has proven to be a place where companies can put down roots and prosper.



**St. Luke's**

Idaho-based, not-for-profit health system.

**7,000-7,999 employees**



**Micron Technology, Inc.**

Manufacturing & Technology.

**5,000-5,999 employees**



**Saint Alphonsus**

A four-hospital regional, faith-based Catholic ministry providing award winning cardiac care, ER, urgent care, women's health, orthopedic care and clinics.

**5,000-5,999 employees**



**Albertsons**

Headquarters for a national grocery chain.

**3,000-3,999 employees**



**Walmart**

Retail trade.

**3,000-3,999 employees**



**J.R. Simplot Company**

Headquarters and processing plant for national food processor

**2,000-2,999 employees**



**HP Inc**

The world's largest technology company, HP established its printer division in Boise in 1973. HP Inc. & HP Enterprise) both of which are located here.

**1,000-1,999 employees**

**MIKE ERKMANN, CCIM**

208.229.6015 | [mike@naiselect.com](mailto:mike@naiselect.com)

**TRAVIS DUNN**

208.229.6005 | [travis@naiselect.com](mailto:travis@naiselect.com)

**RILEY WIEDMEIER, MBA**

208.954.2229 | [riley@naiselect.com](mailto:riley@naiselect.com)