

# PARK 520 - NEAR FUTURE LIGHT RAIL STATION

6825 - 6855 176TH AVE NE, REDMOND, WASHINGTON



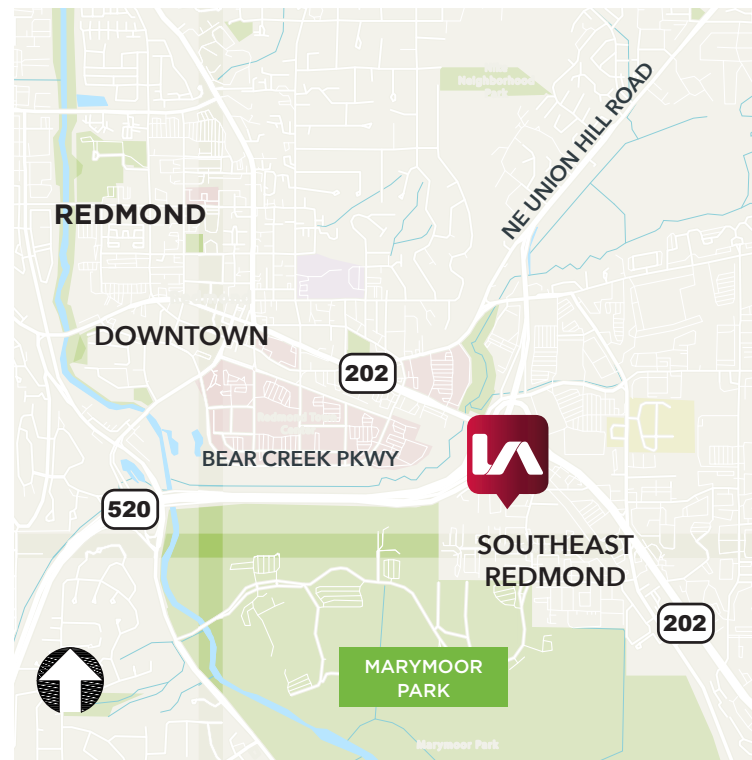
## INDUSTRIAL / FLEX FOR LEASE

### LISTING INFORMATION

<b>ADDRESS:</b>	6855 176th Ave NE, Redmond, WA
<b>SUITE 125 A:</b>	3,654 SF (includes dock loading)
<b>SUITE 265:</b>	3,543 SF (divisible)
<b>SUITE 265 A:</b>	1,609 SF
<b>SUITE 265 B:</b>	1,934 SF
<b>ZONING:</b>	MDD2

### COMMENTS

- » Rare Light Industrial space in Redmond Business Park
- » Across the street from the future SE Redmond /Marymoor Village light rail station (estimated 2024)
- » Easy access to WA-520 and Downtown Redmond
- » Office/Warehouse/Mezzanine space available



**Aaron Mathieu**

amathieu@lee-associates.com  
C 206.948.4670

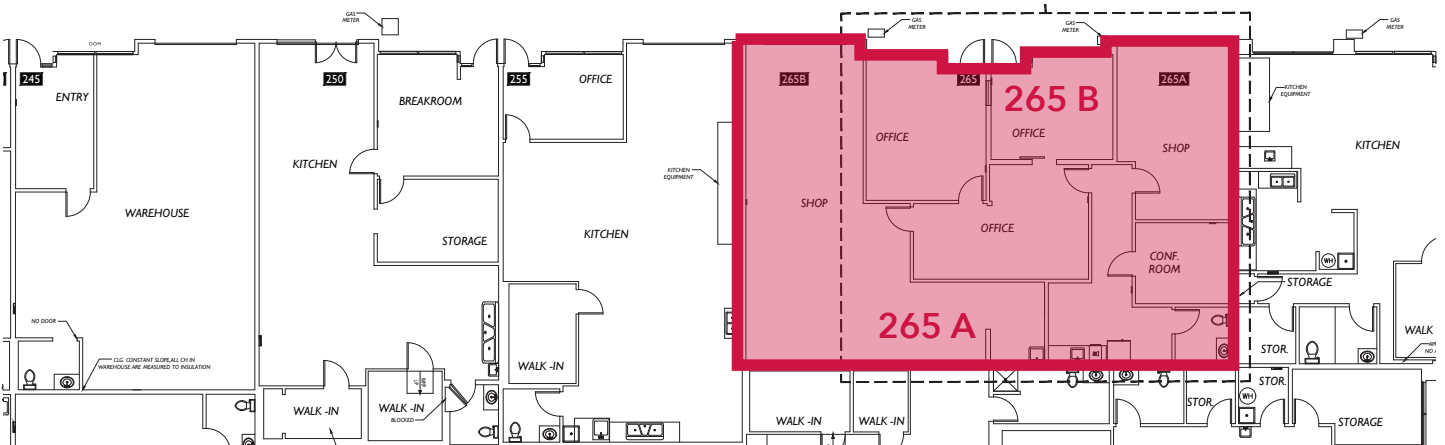
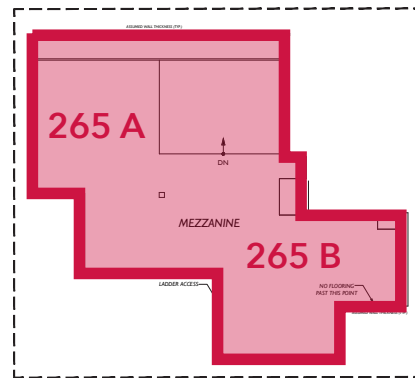
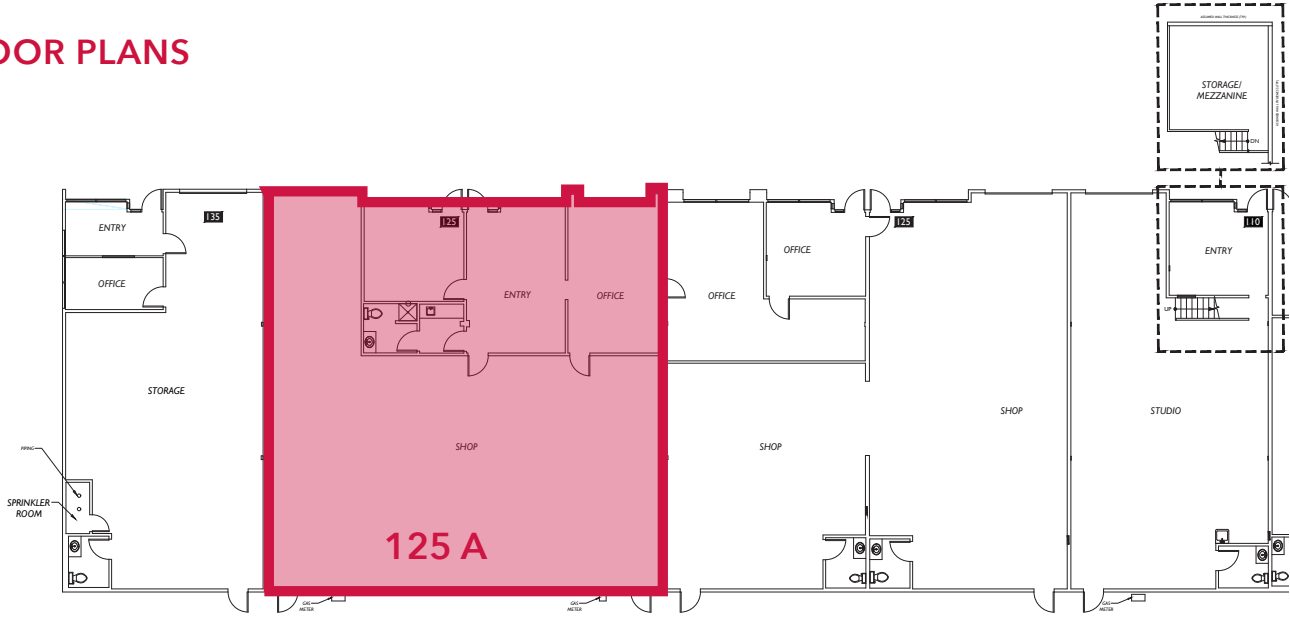
**Jim Reed, SIOR**

jreed@lee-associates.com  
C 425.679.1681

**Carson Scott**

cscott@lee-associates.com  
C 425.736.3752

## FLOOR PLANS



**Aaron Mathieu**  
amathieu@lee-associates.com  
C 206.948.4670

**Jim Reed, SIOR**  
jreed@lee-associates.com  
C 425.679.1681

**Carson Scott**  
cscott@lee-associates.com  
C 425.736.3752