



±5,127 SF BUILDING

73814 DINAH SHORE DRIVE  
PALM DESERT

AVAILABLE FOR SALE



COMMERCIAL REAL ESTATE SERVICES

Corporate ID: 01044791

COMPLETE BUILDING RENOVATION IN PROCESS

**BOBBY MARTINEZ**

Associate

License ID# 02204507

949.790.3104

[bmartinez@leeirvine.com](mailto:bmartinez@leeirvine.com)

**STEFFAN MORRIS**

Senior Vice President

License ID# 02010049

949.790.3190

[smorris@leeirvine.com](mailto:smorris@leeirvine.com)

**DANIELLE HEBERT**

Broker Assistant

License ID# 02227534

949.790.3166

[dhebert@leeirvine.com](mailto:dhebert@leeirvine.com)

All information furnished regarding property for sale, rental or financing is from sources deemed reliable, but no warrant or representation is made to the accuracy thereof and same is submitted to errors, omissions, change of price, rental or other conditions prior to sale, lease or financing or withdrawal without notice. No liability of any kind is to be imposed on the broker herein.



# PROPERTY HIGHLIGHTS

73814 DINAH SHORE DRIVE | PALM DESERT

- Building Size:  $\pm 5,127$  SF
- Office Size:  $\pm 770$  SF
- $\pm 19'$  Clear Height
- 400 amps(Verify)
- Fenced Side Yard
- 15 Parking Spaces
- One Ground Level Door -  $10' \times 12'$
- Fully Sprinklered
- Features:
  - Move-In Ready
  - Minimal Office
  - Off of 10 Freeway
  - Currently in Process of Renovations



FOR MORE INFORMATION, PLEASE CONTACT:

**BOBBY MARTINEZ**  
Associate  
License ID# 02204507  
949.790.3104  
bmartinez@leeirvine.com

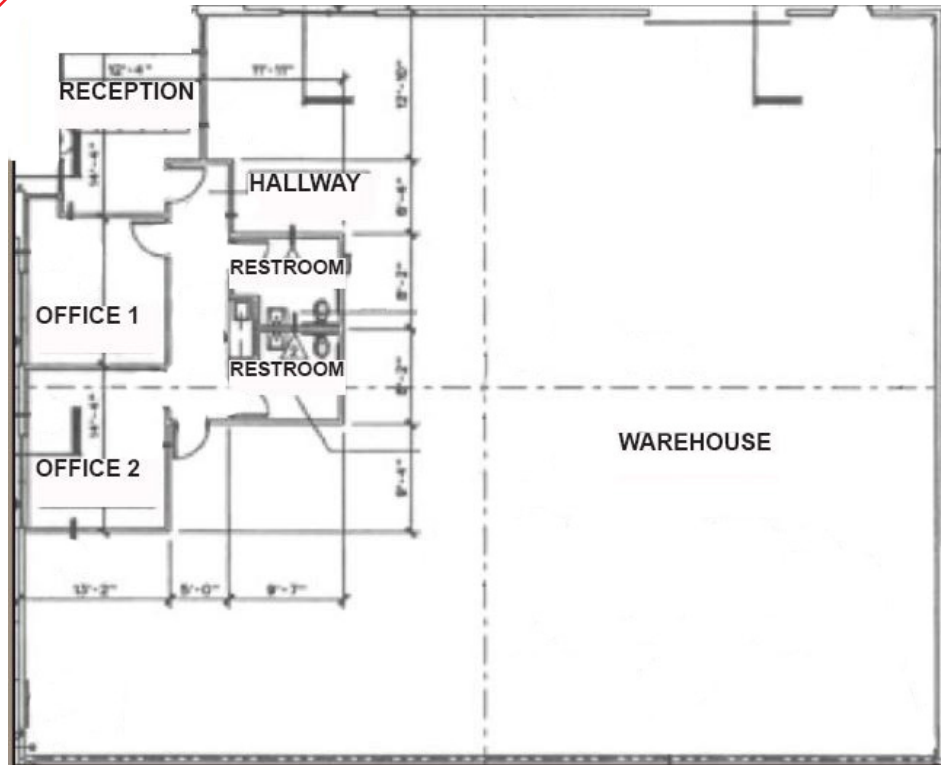
**STEFFAN MORRIS**  
Senior Vice President  
License ID# 02010049  
949.790.3190  
smorris@leeirvine.com

**DANIELLE HEBERT**  
Broker Assistant  
License ID# 02227534  
949.790.3166  
dhebert@leeirvine.com

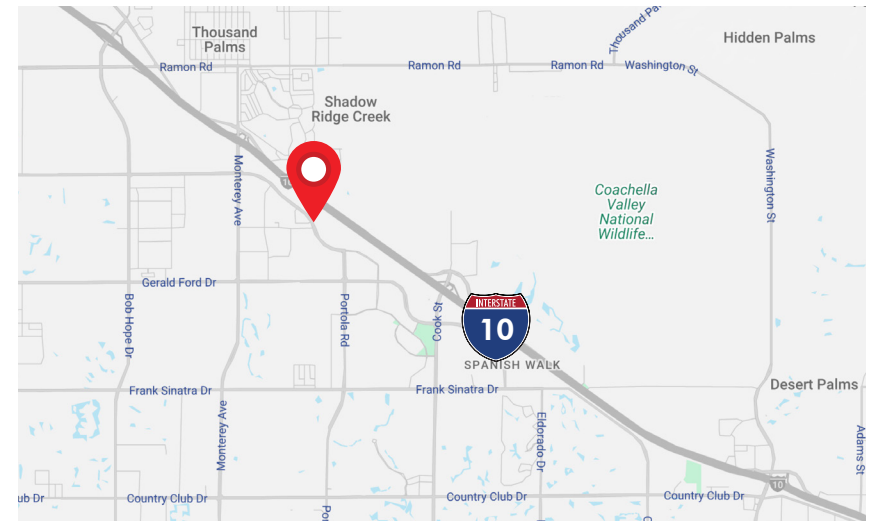
 **LEE & ASSOCIATES**  
COMMERCIAL REAL ESTATE SERVICES  
Corporate ID: 01044791

# PROPERTY HIGHLIGHTS

73814 DINAH SHORE DRIVE | PALM DESERT



\*Verify



FOR MORE INFORMATION, PLEASE CONTACT:

**BOBBY MARTINEZ**  
Associate  
License ID# 02204507  
949.790.3104  
bmartinez@leeirvine.com

**STEFFAN MORRIS**  
Senior Vice President  
License ID# 02010049  
949.790.3190  
smorris@leeirvine.com

**DANIELLE HEBERT**  
Broker Assistant  
License ID# 02227534  
949.790.3166  
dhebert@leeirvine.com

**LEE & ASSOCIATES**  
COMMERCIAL REAL ESTATE SERVICES  
Corporate ID: 01044791