

GROUND FLOOR CORNER RETAIL SPACE FOR LEASE

CORNER OF 3RD & BAINBRIDGE Queen Village, Philadelphia 19147



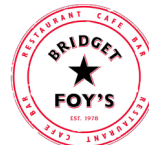
- » 1,439 +/- SF ground floor retail space plus private courtyard
- » Located at the corner of 3rd & Bainbridge Streets in Queen Village.
- » Possible entrance at the corner or through the courtyard plus use of lower level.
- » Close proximity to iconic South Street
- » Most recently a dental practice for 30 years.
- » Zoning CMX-2
- » Frontage: 23' on 3rd St and 63' on Bainbridge St
- » Queen Village is a charming neighborhood where colonial houses mingle with innovative dining spots and shopping districts, as well as art galleries, sundries and hip eateries along Fabric Row.



DEMOGRAPHICS

Residents within 1 mile	25,628
Average household income	\$69,568
Est. daytime population (workers within 1 mile)	15,604

NEIGHBORS INCLUDE:

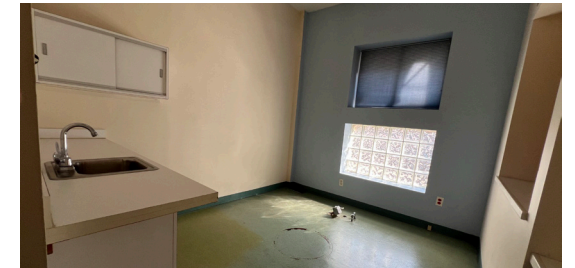
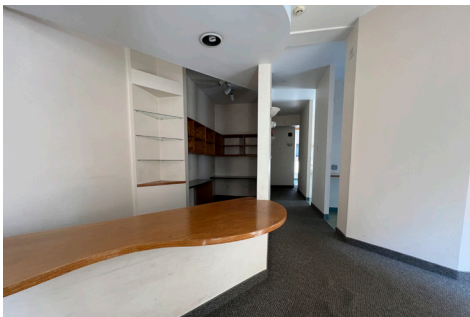


VERONICA BLUM 267.238.1728 ■ vblum@mpnrealty.com **MELISSA MONTIEL** 215.882.1922 ■ mmontiel@mpnrealty.com

CORNER OF 3RD & BAINBRIDGE Queen Village, Philadelphia 19147



Property Photos



VERONICA BLUM 267.238.1728 ■ vblum@mpnrealty.com **MELISSA MONTIEL** 215.882.1922 ■ mmontiel@mpnrealty.com

CORNER OF 3RD & BAINBRIDGE

Queen Village, Philadelphia 19147

Neighborhood Aerial



VERONICA BLUM 267.238.1728 ■ vblum@mpnrealty.com **MELISSA MONTIEL** 215.882.1922 ■ mmontiel@mpnrealty.com