

Aurora Park Plaza One & Two Office Space For Lease



Available For Lease

Suites From 900 Sqft - 3,379 Sqft

Max Contiguous 3,379 -Sqft

Min 900 Sqft

Lease Rate \$19 to \$21 Per Sqft

Parking: 3 Per 1,000 Sqft

Great Views

Local Ownership & Management

Tenant Improvements Negotiable

Easy Access to I-225 & Tech Center

Substantial Building Improvements

12500-12510 E. Iliff Ave. Aurora, CO 80014



Brian Basham

Broker/Owner

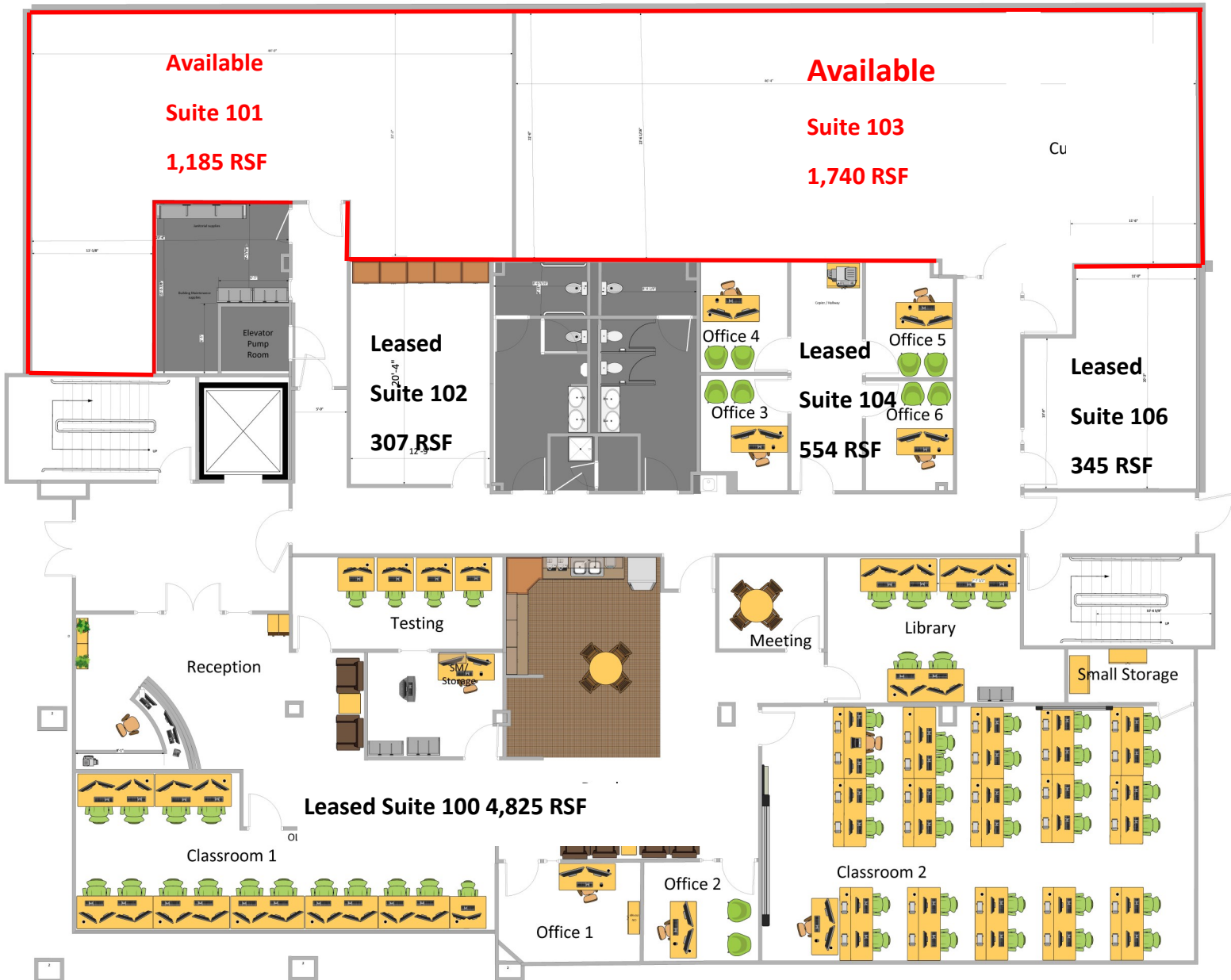
Basham Investments, LLC

303-907-7447

1499 Blake St. Suite 1D

Denver, CO 80202

Space For Lease Aurora Park Building One - First Floor



Available Suites

Suite 101 1,185 Rentable Square Feet

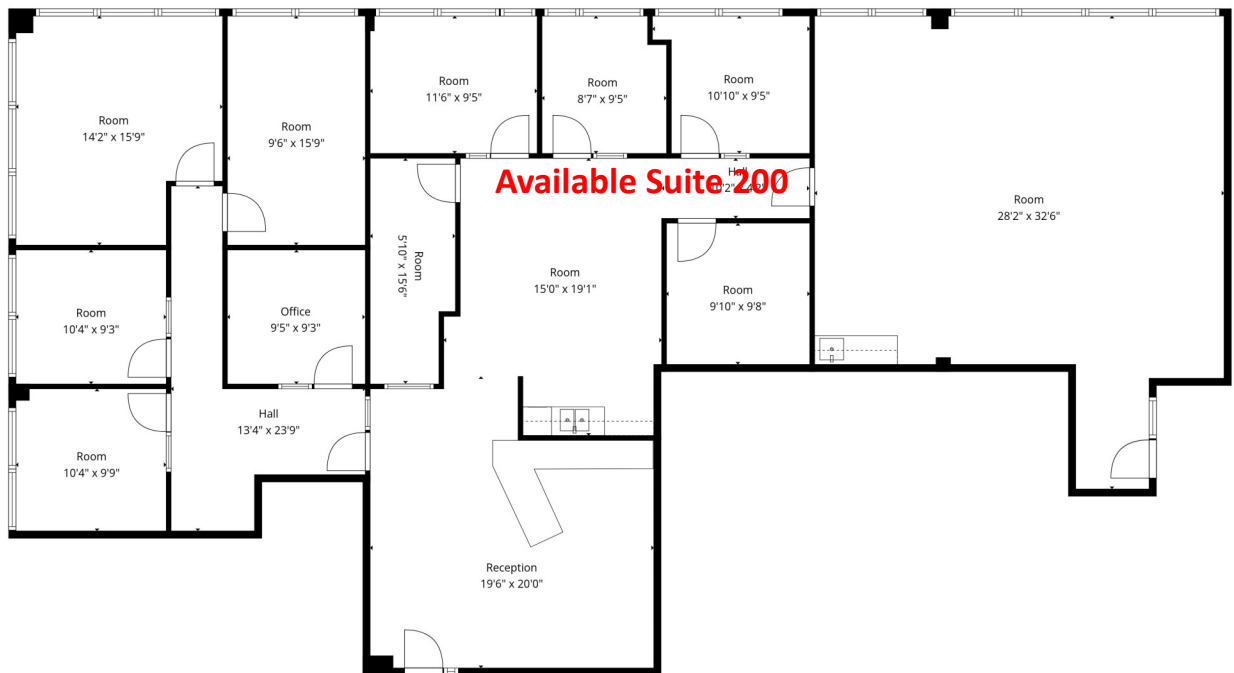
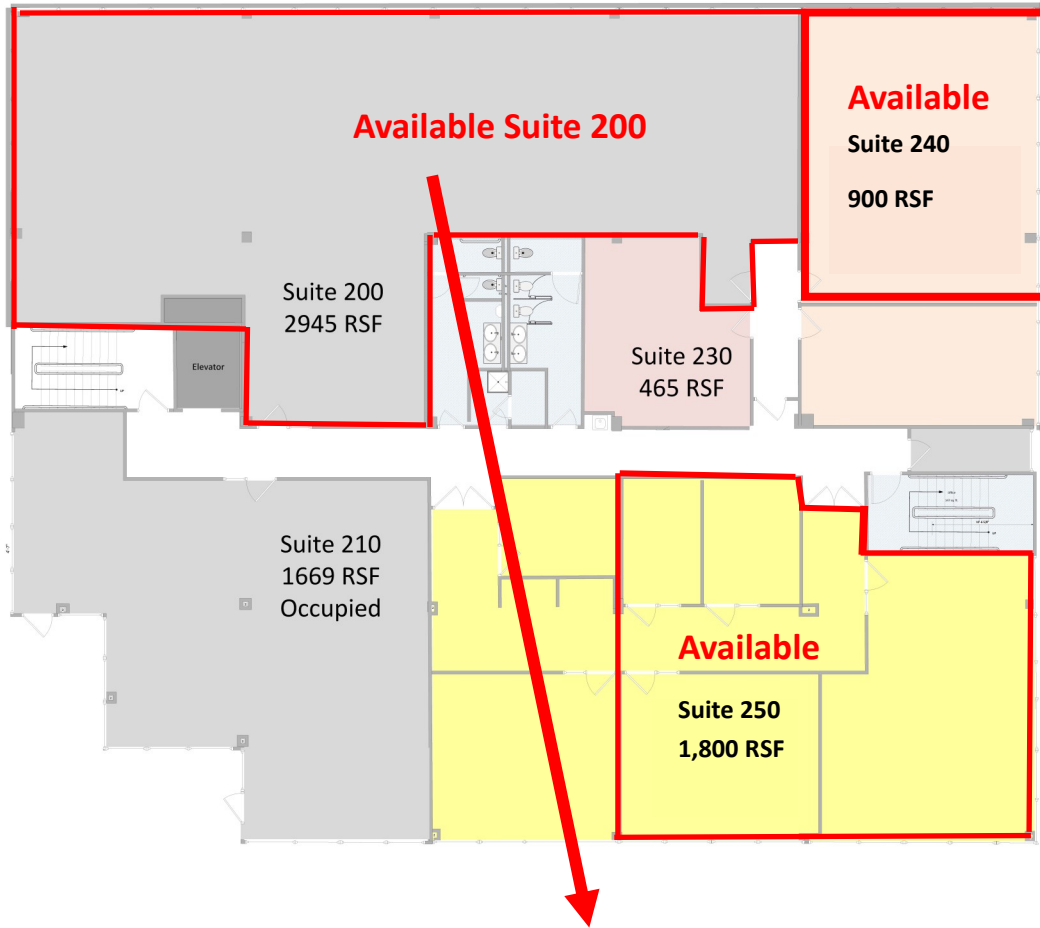
Suite 103 1,740 Rentable Square Feet

Total Available 2,925 Rentable Square Feet

All New Corner Space With New, LED Lighting, Ceiling Grid, Carpet and Paint Ready To Go!

Space For Lease Aurora Park Building One - Second Floor

Floor 2
Available/
Occupied



Available Suites

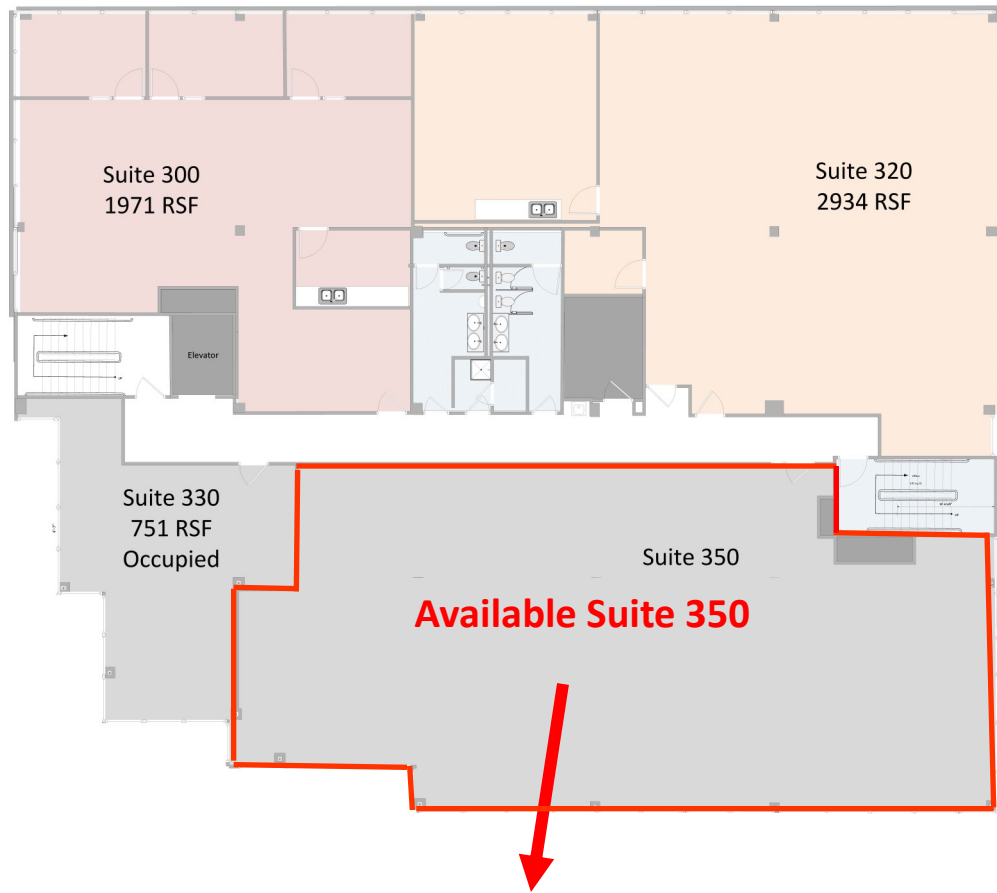
Suite 200	2,945 Square Feet	Fully Built Out
Suite 240	900 Square Feet	Wide Open Corner Suite
Suite 250	1,800 Square Feet	Private Offices and Open Areas

Suite 200 Photos



Space For Lease Aurora Park Building One - Third Floor

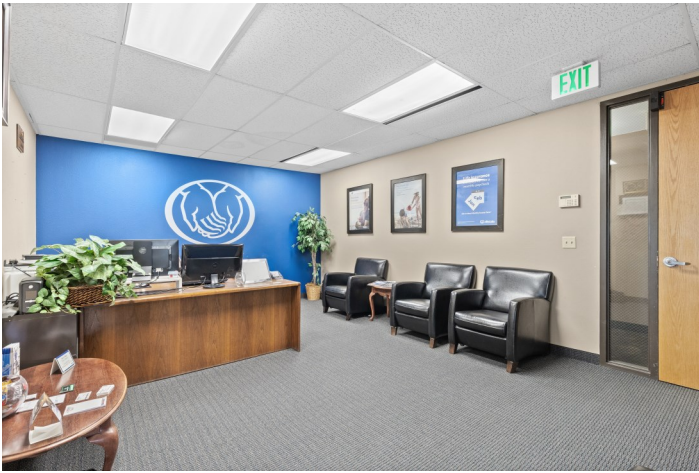
Floor 3
Available/
Occupied



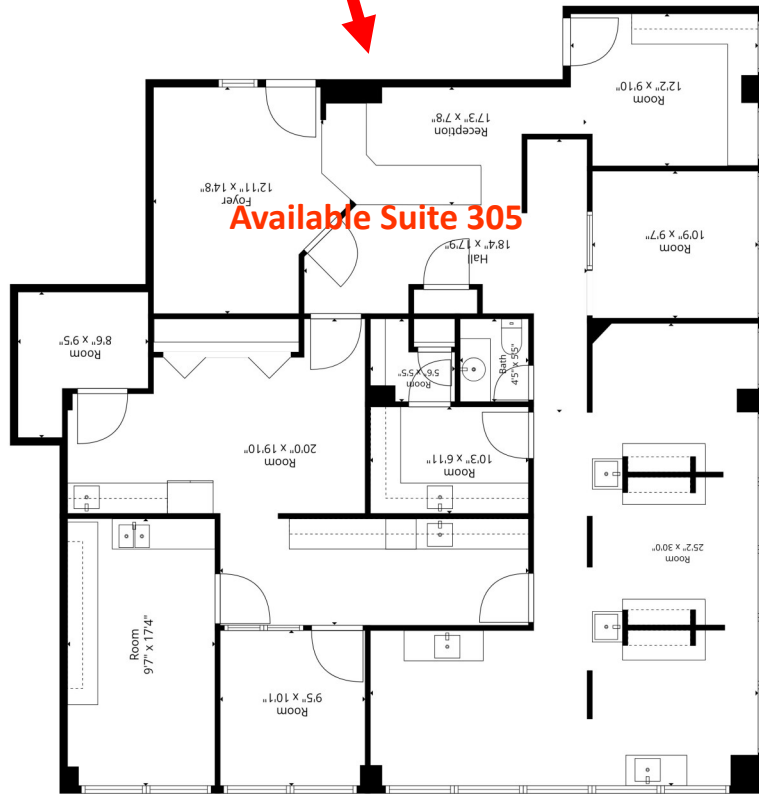
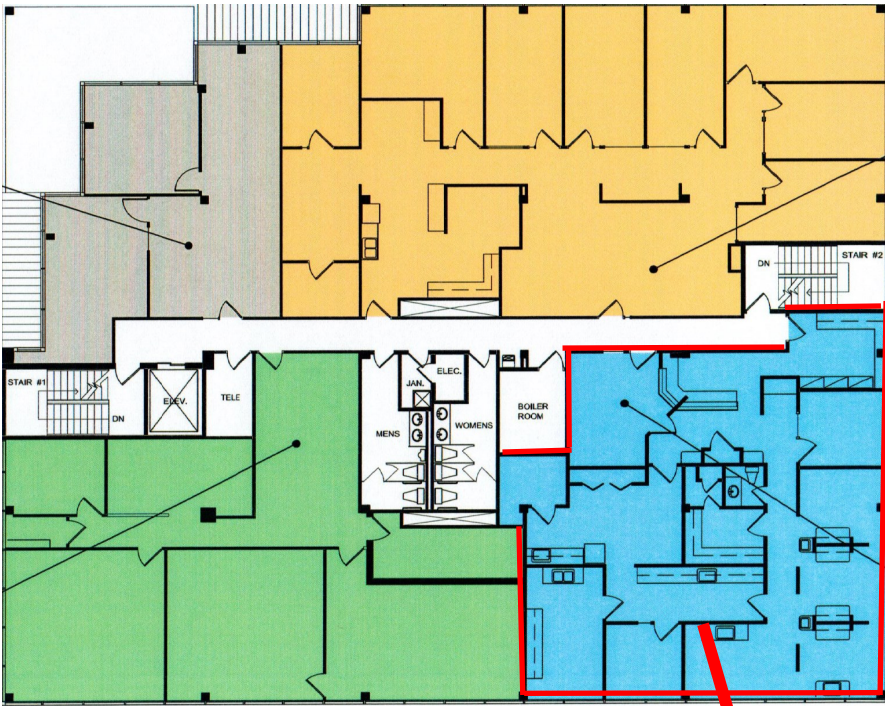
Available Suites

Suite 350 3,379 Square Feet Fully Built Out

Suite 350 Photos



Space For Lease Aurora Park Building Two - Third Floor



Available Suite 305

Available Suites

Suite 305 **2,312 Square Feet**
Former Dentist Space With Private Bath

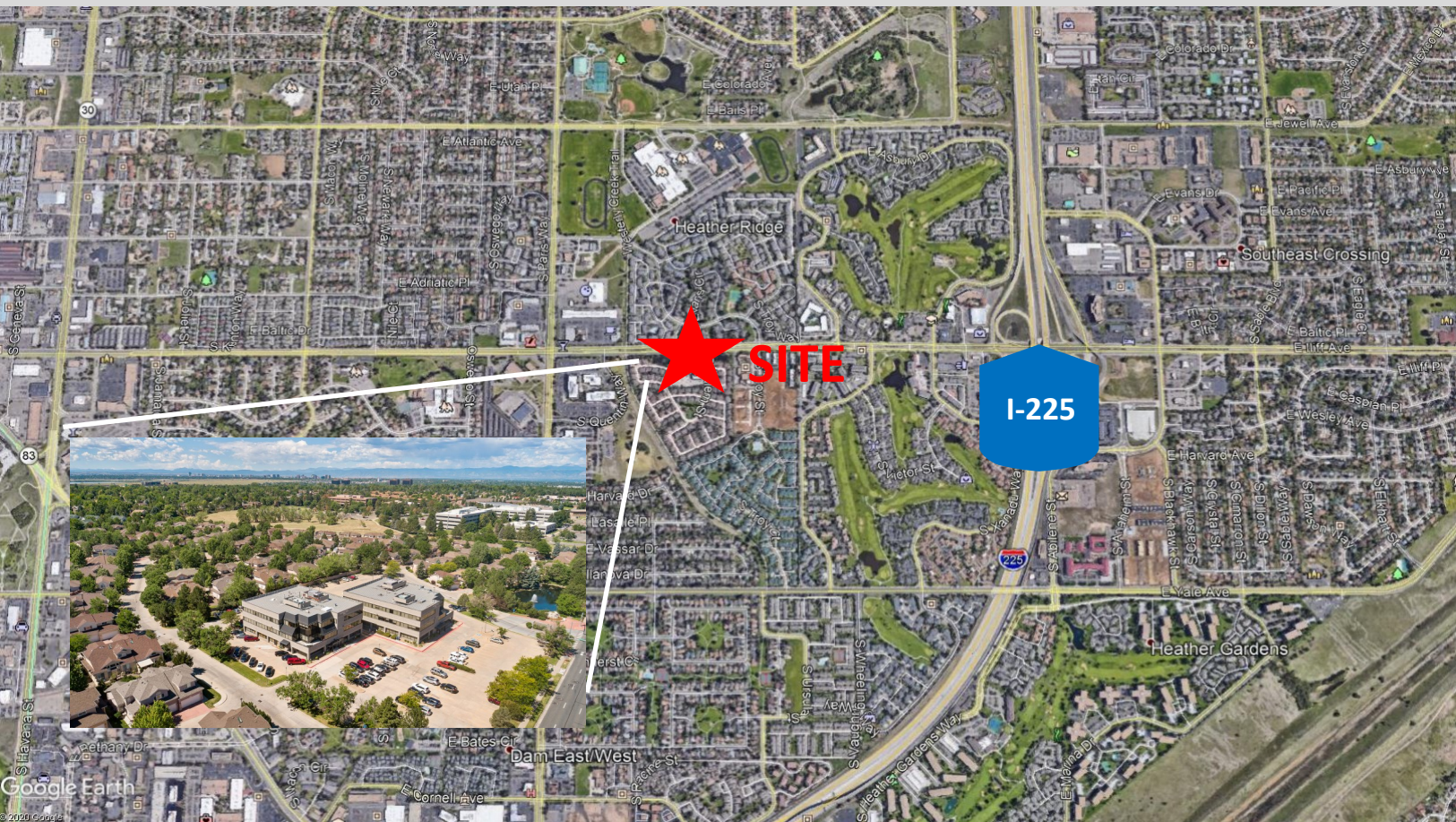
Suite 305 Photos





Property Information

Building(s) Size	53,471 SQFT
City	Aurora
County	Arapahoe
Year Built	1985
Number of Tenants	25
Parking	3 per thousand
Leased SQFT	41,010
Available SQFT	12,461
Lease Term	3 Plus Years
Tenant Finish Allowance	Negotiable
Lease Rate	\$19-\$21
Lease Type	Full Service



Brian Basham * Basham Investments, LLC

303-907-7447 * brian@bashamcre.com