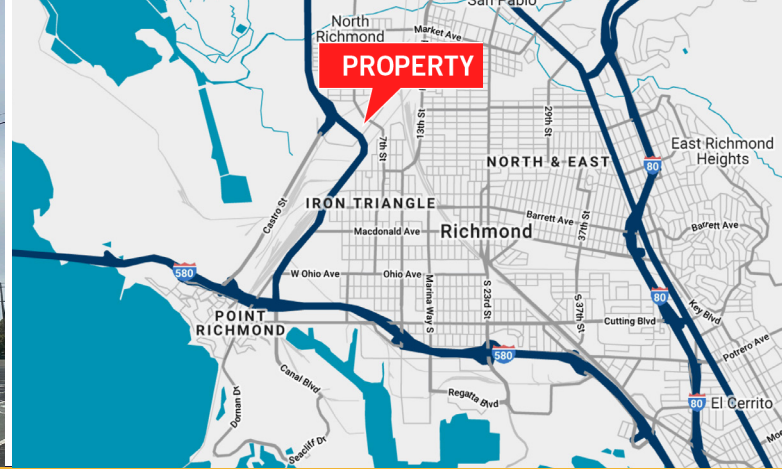


FOR SUBLEASE
1099 ESSEX AVENUE
RICHMOND, CALIFORNIA



PROPERTY HIGHLIGHTS

- » ±67,751 Square Feet on Two (2) Floors
- » ±3,000 Square Foot Office (±1,500 SF on Each Floor)
- » Fully Sprinklered
- » 1200 Amps @ 120/208 Volt Power (To Be Verified)
- » ±14' Clear Height
- » Shared Dock Loading Platform with Five (5) Spots and Ramp Access
- » One (1) Exclusive Rear Dock Well
- » Two (2) Rail Doors
- » Two (2) Freight Elevators
- » Tons of Natural Light Throughout
- » Employee Parking Area
- » LED: 3/31/29

ASKING RATE: CALL BROKER

JEFF LEENHOUTS

Managing Director

+1 510 267 6014

jeffrey.leenhouts@cushwake.com

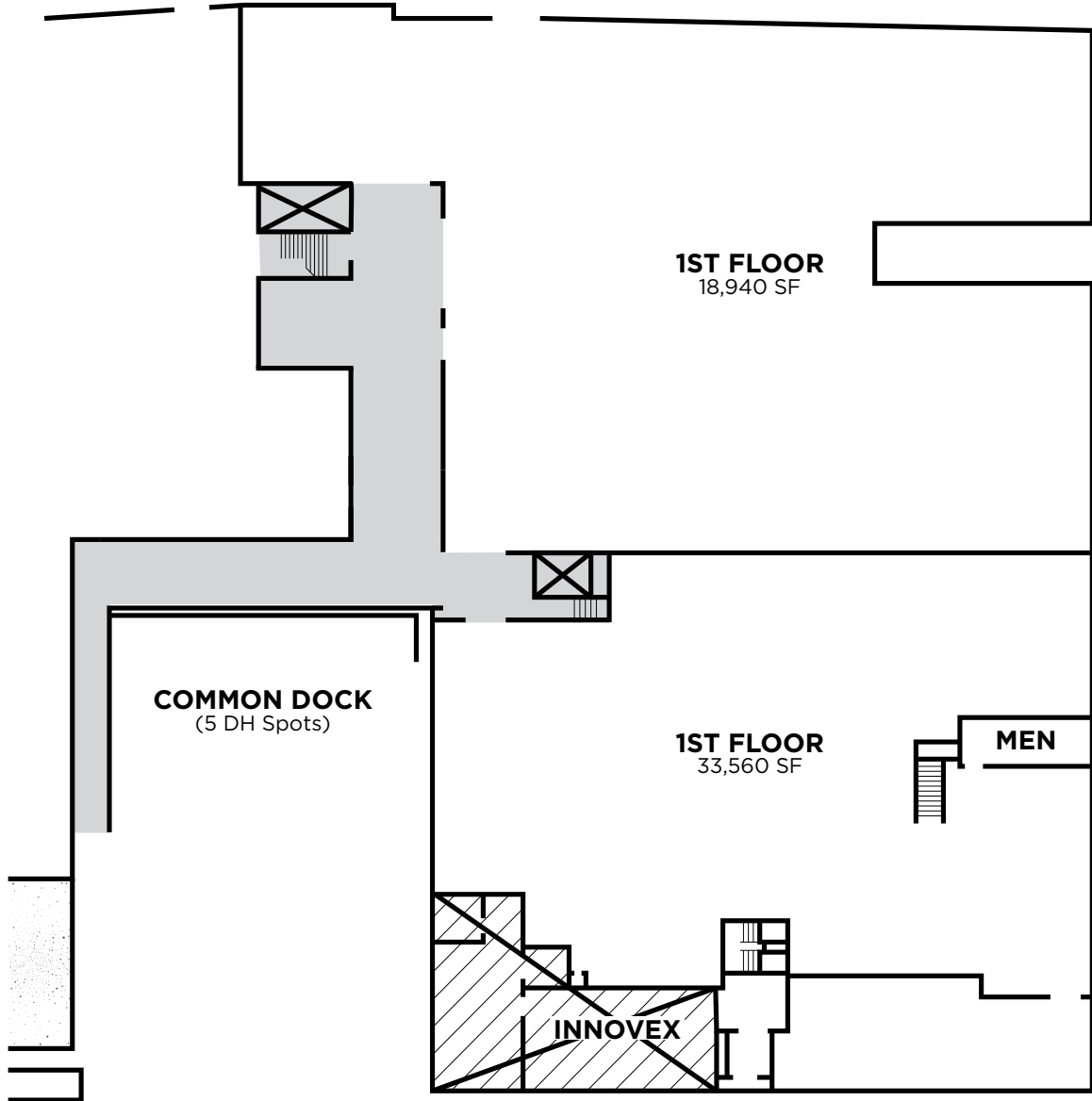
Lic #01063048



FOR SUBLEASE

1099 ESSEX AVENUE

RICHMOND, CALIFORNIA



FIRST FLOOR

JEFF LEENHOUTS

Managing Director

+1 510 267 6014

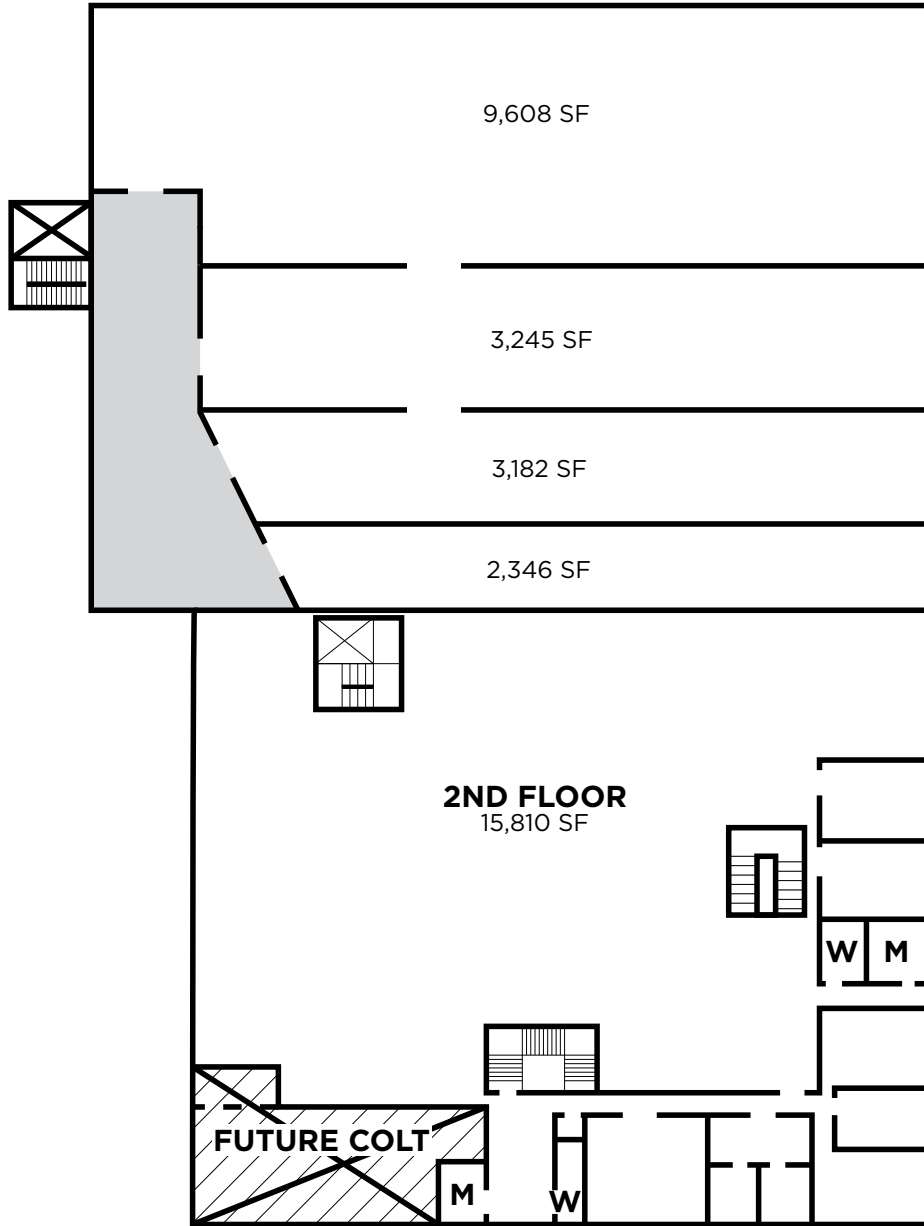
jeffrey.leenhouts@cushwake.com

Lic #01063048

FOR SUBLEASE

1099 ESSEX AVENUE

RICHMOND, CALIFORNIA



SECOND FLOOR

JEFF LEENHOUTS

Managing Director

+1 510 267 6014

jeffrey.leenhouts@cushwake.com

Lic #01063048

FOR SUBLEASE

1099 ESSEX AVENUE RICHMOND, CALIFORNIA



PHOTOS

JEFF LEENHOUTS

Managing Director

+1 510 267 6014

jeffrey.leenhouts@cushwake.com

Lic #01063048