

AVAILABLE FOR LEASE

SANSONE WIGWAM & PECOS CENTER

2500-2510 Wigwam Pkwy., Henderson, NV 89074



AVAILABLE FOR LEASE | 2500-2510 Wigwam Pkwy.

25,453

25,453-Square-Foot, Two-Story Office Building

2

Available Suites – Suite 104, & Suite 207

\$2.10

Price per Square Foot – NNN

\$0.51

Price per Square Foot Estimated CAMs

4.52

Per 1,000SF Parking Ratio

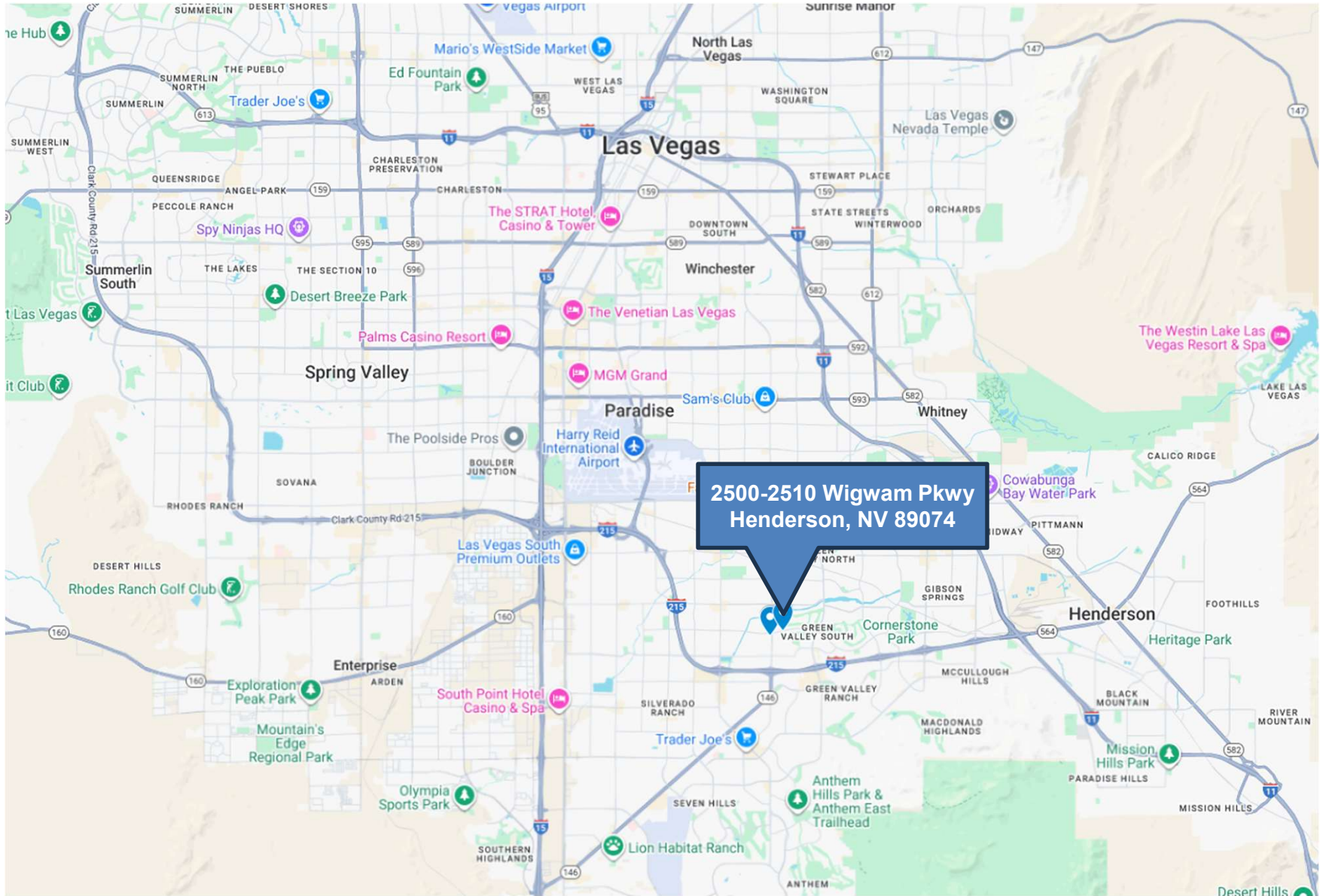
Highlights

Sansone Wigwam & Pecos Center is located in Henderson. It offers prominent exterior signage with direct frontage on Wigwam Pkwy. with easy access to I-215.



NEWMARK

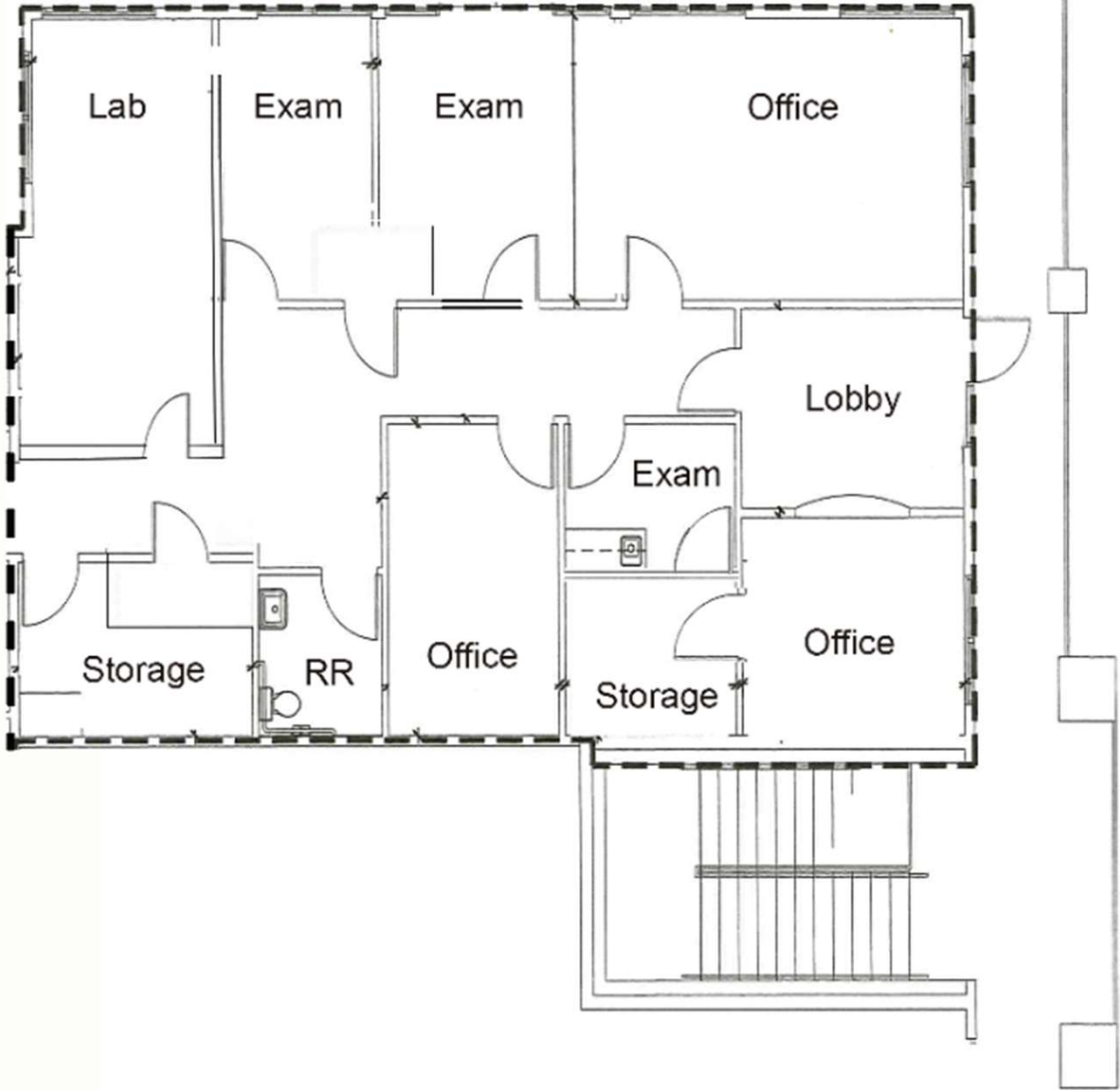
PROPERTY HIGHLIGHTS



NEWMARK

AERIAL MAP

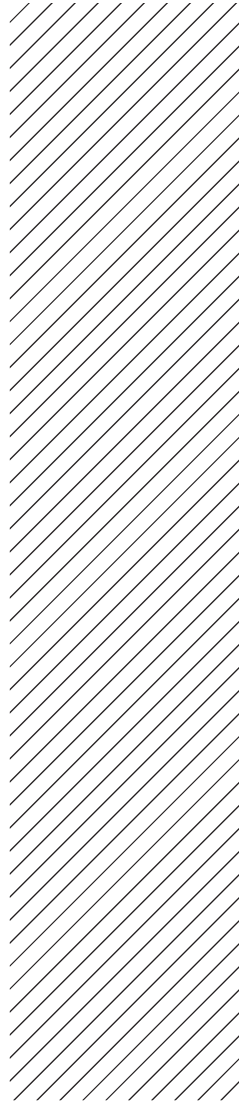
AVAILABLE FOR LEASE | 2500-2510 Wigwam Pkwy.



NEWMARK

SUITE 207
1,353 SF

AVAILABLE FOR LEASE | 2500-2510 Wigwam Pkwy.



NEWMARK

PROPERTY PHOTOS

FOR LEASE

SANSONE WIGWAM & PECOS CENTER

Mike TabEEK, SIOR, CCIM

Senior Managing Director

t 702-405-1750

mike.tabEEK@nmrk.com

NV RE Lic. #B.0145775

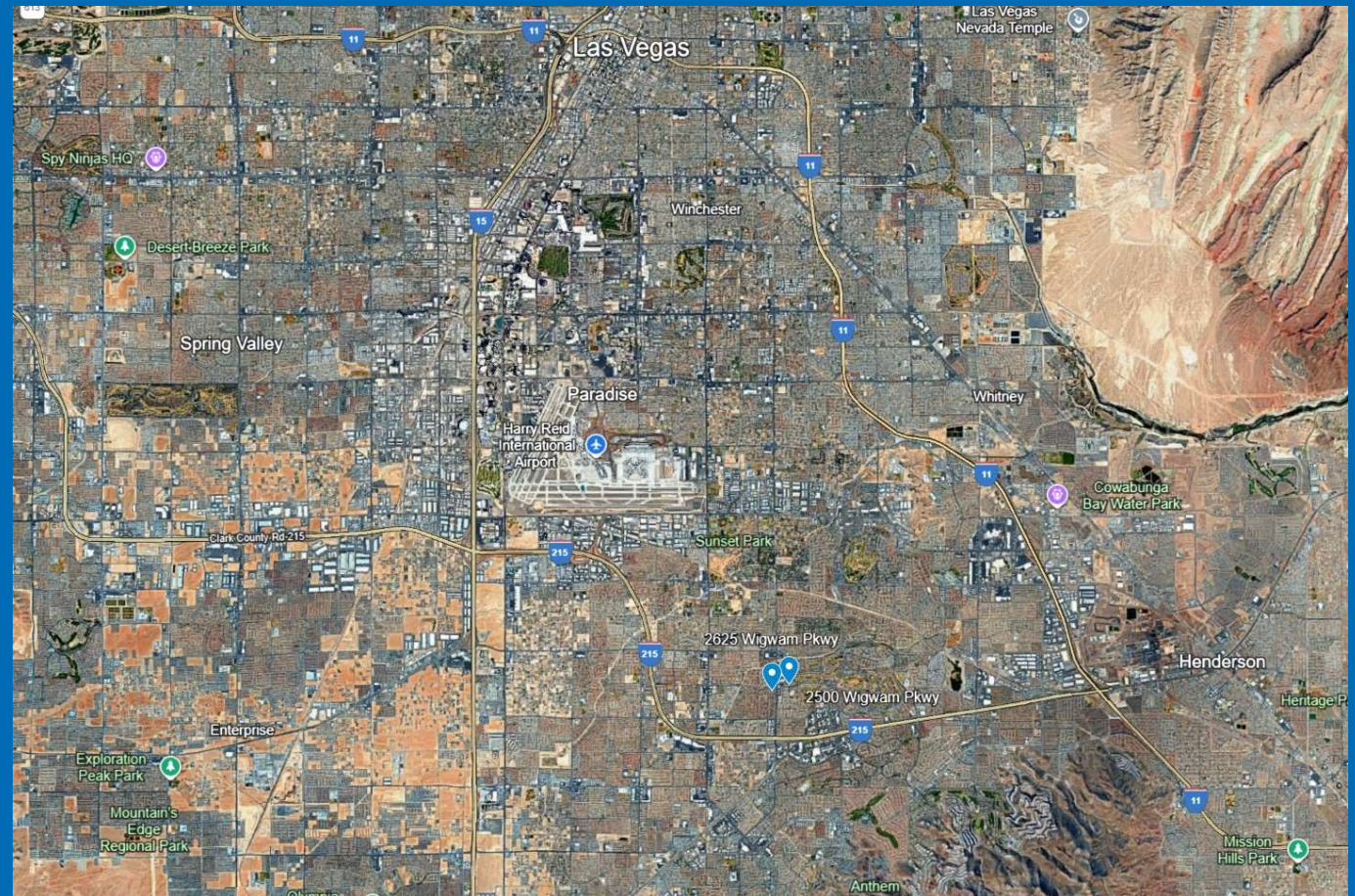
Thomas Olsen

Associate

t 702-405-1714

thomas.olsen@nmrk.com

NV RE Lic. #S.0200270



NEWMARK

The information contained herein has been obtained from sources deemed reliable but has not been verified and no guarantee, warranty or representation, either express or implied, is made with respect to such information. Terms of sale or lease and availability are subject to change or withdrawal without notice.