

# RIVERVIEW COMMERCE CENTER

10084 East Kemper Road  
Symmes Township, Ohio 45140

13,285 Square Feet Total  
**\$4.25 - \$12.00/SF MG**



## Property Highlights

3,385 SF of office, divisible to 1,410 SF  
Large monument signage facing E. Kemper  
Move in ready office space with high ceilings  
G-Heavy Industrial ([link to zoning text](#))  
9,900 SF of high-bay industrial space  
**Industrial Space: \$4.25/SF NNN + utilities**  
**Office Space: \$12.00/SF MG + utilities**

Nick Barela  
President, Principal  
[nick.barela@republic-cre.com](mailto:nick.barela@republic-cre.com)

Direct: (513) 549-5440  
Main: (513) 549-0090  
Fax: (513) 549-0070

[www.republic-cre.com](http://www.republic-cre.com)

Ed Mathis  
Vice President  
[ed.mathis@republic-cre.com](mailto:ed.mathis@republic-cre.com)

Direct: (513) 549-0440  
Main: (513) 549-0090  
Fax: (513) 549-0070

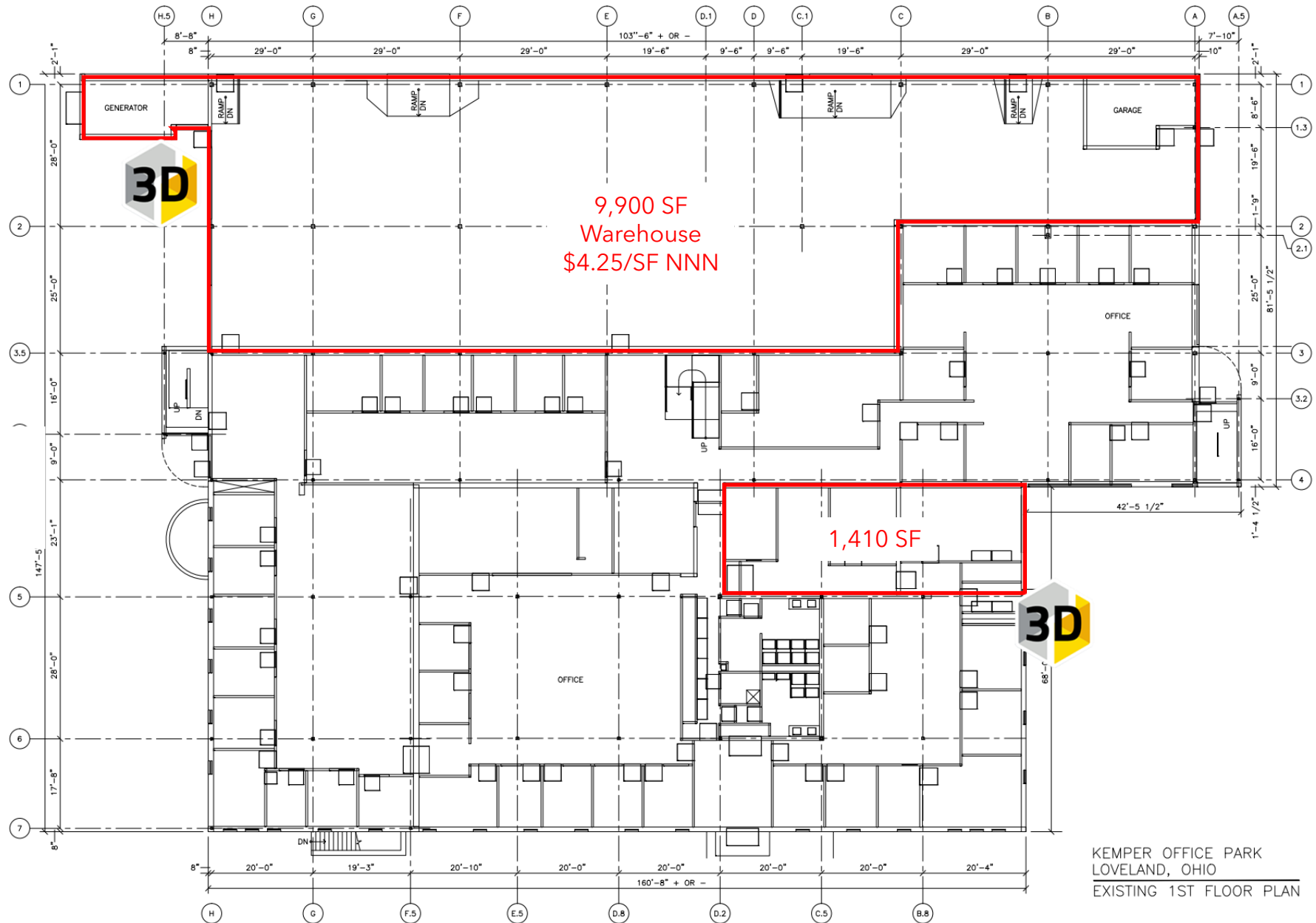
[www.republic-cre.com](http://www.republic-cre.com)



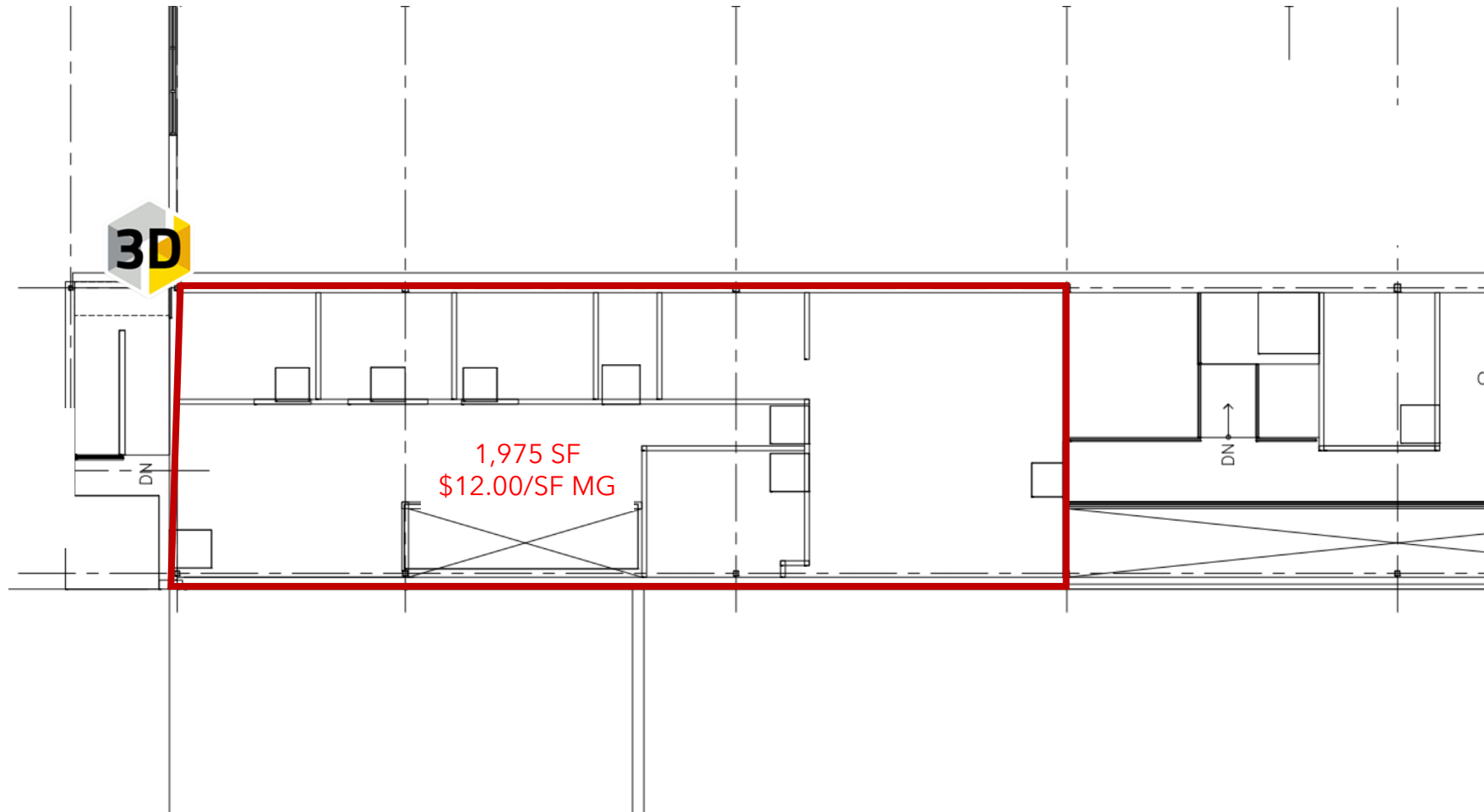
**REPUBLIC**  
COMMERCIAL REAL ESTATE

The information contained herein was obtained from sources we consider reliable. We cannot be responsible, however, for errors, omissions, prior sales, withdrawal from the market or change in price. Seller and broker make no representation as to the environmental condition of the property and recommend purchaser's/tenant's independent investigation.

# FIRST FLOOR AVAILABILITY

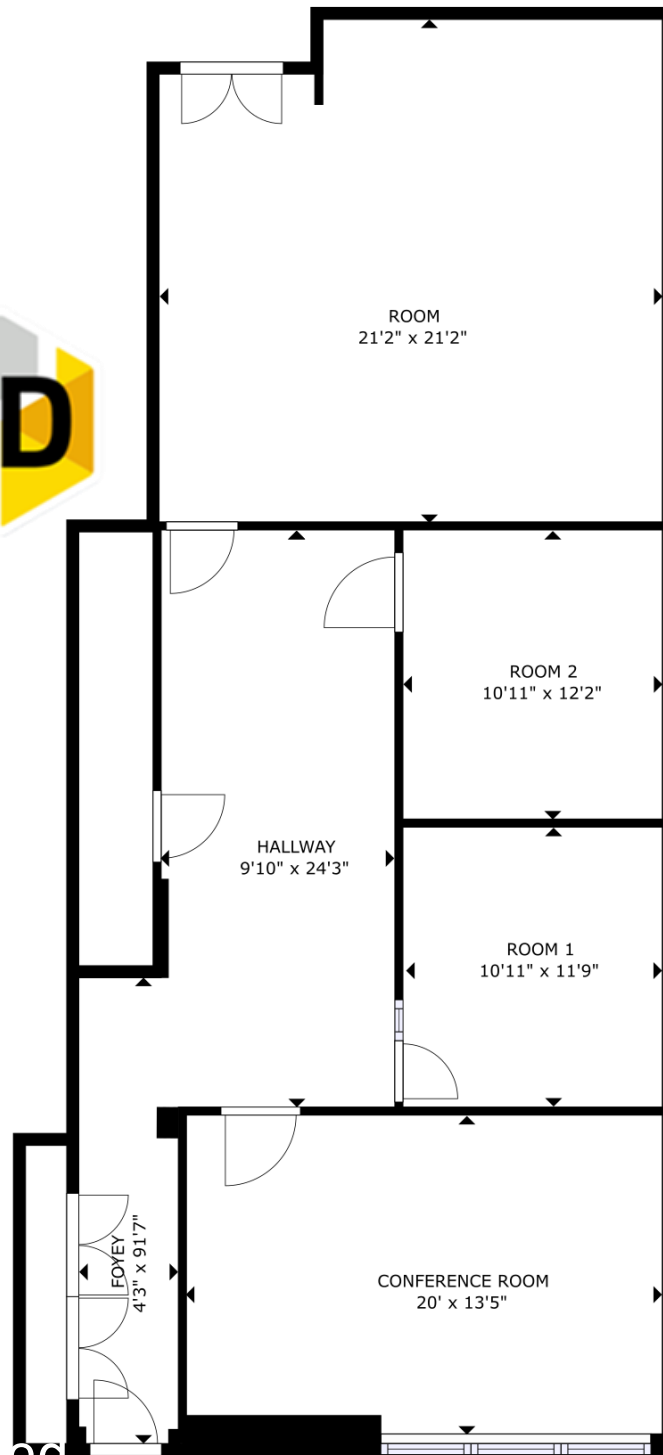


# SECOND FLOOR AVAILABILITY



1,975 SF of office meeting space (available separately, not to scale)

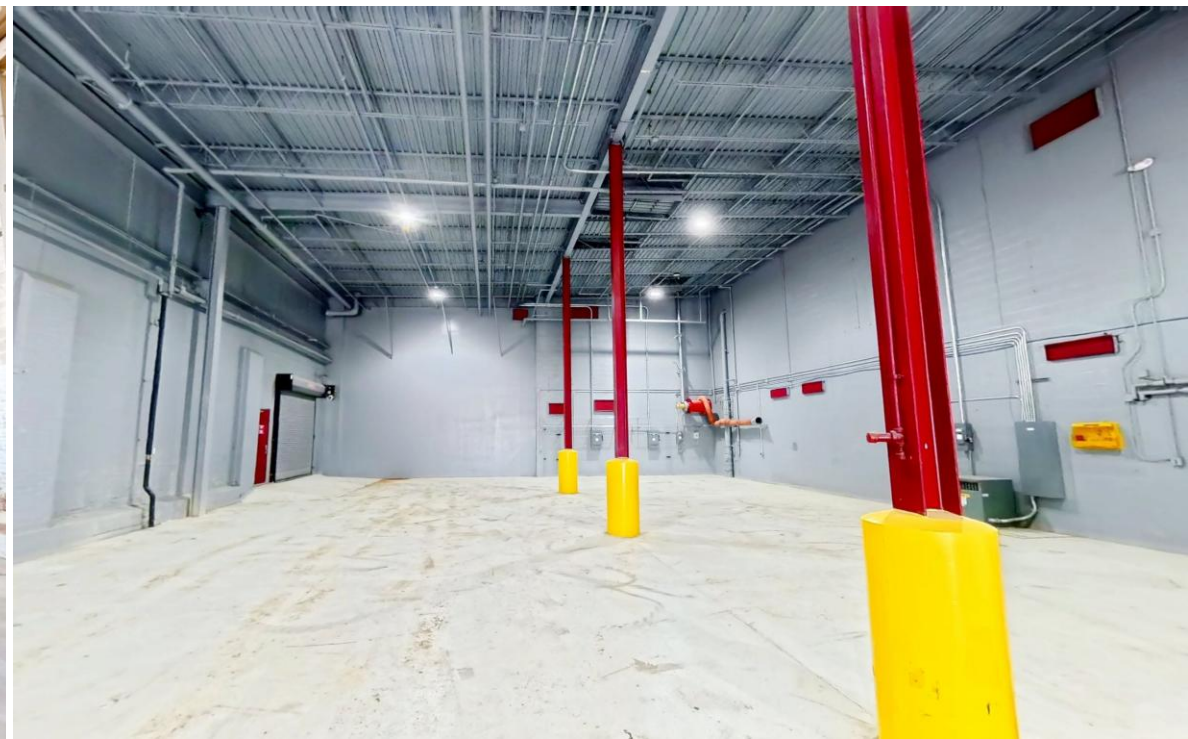
# FIRST FLOOR SUITE



1,410 SF with direct access to the parking lot  
Please click the [Matterport](#) icon for a virtual tour of our finishes

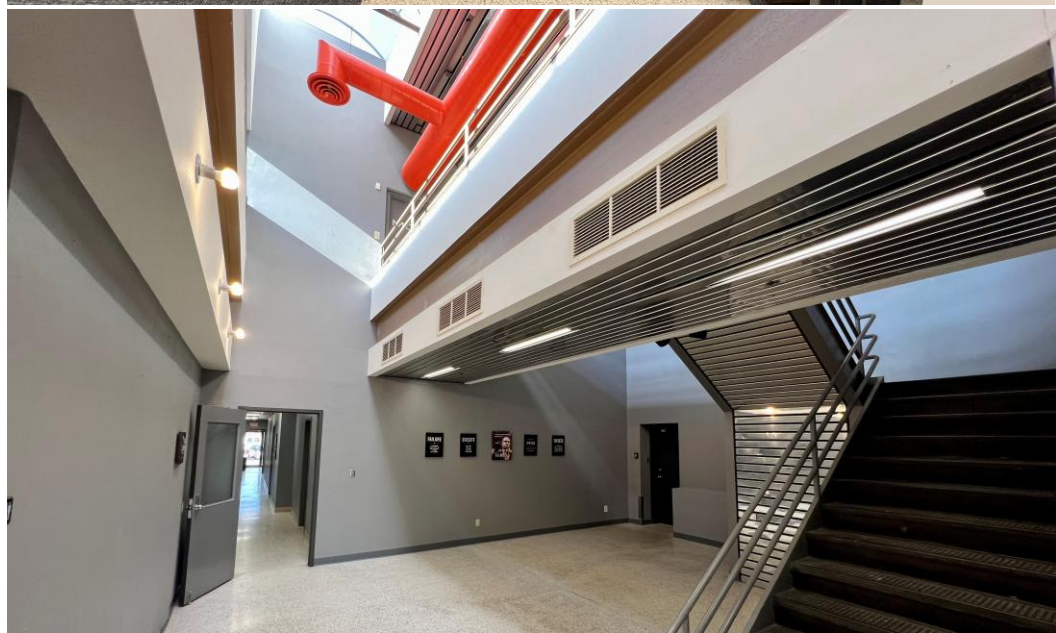
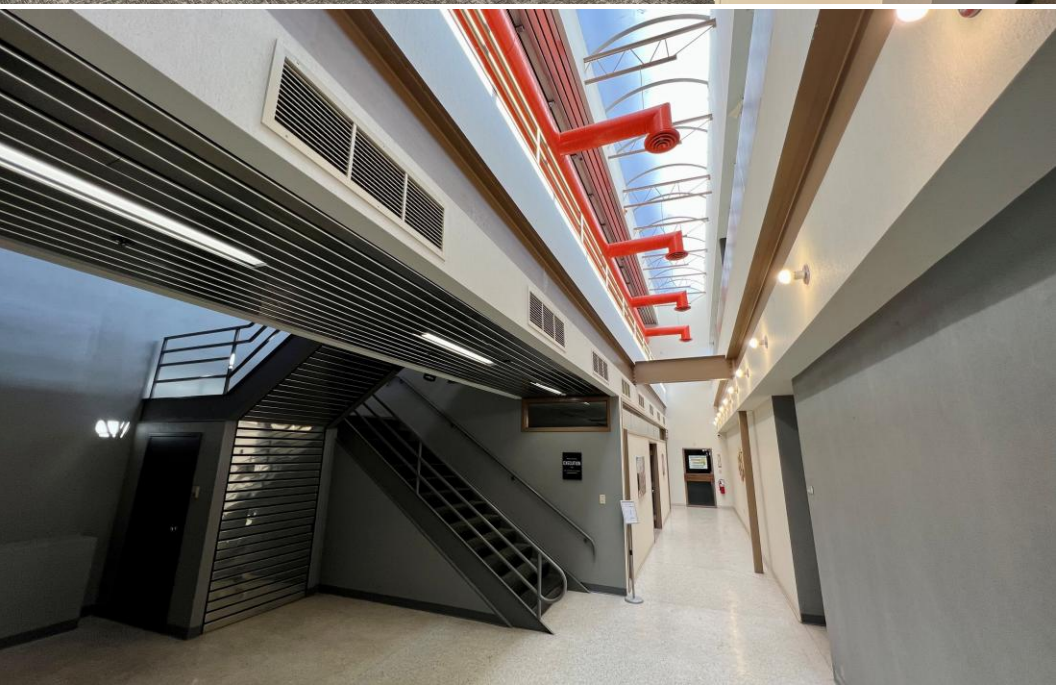


# INDUSTRIAL PHOTOS





# OFFICE PHOTOS



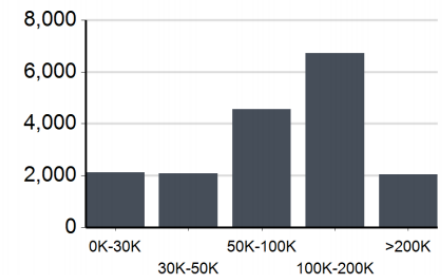
# DEMOGRAPHIC DETAIL

## Location Facts & Demographics

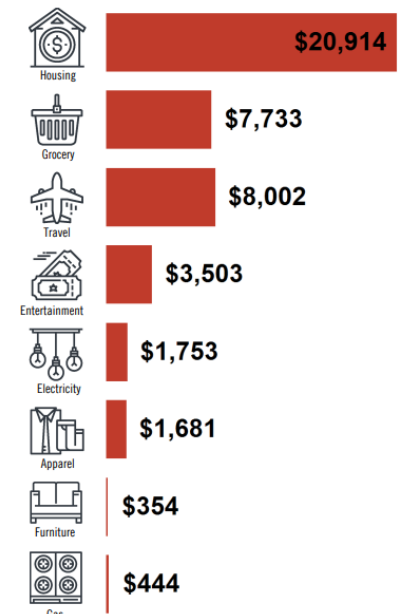
Demographics are determined by a 10 minute drive from 10084 E Kemper Rd, Loveland, OH 45140



### INCOME BY HOUSEHOLD



### HH SPENDING



### CITY, STATE

**Loveland, OH**

### POPULATION

**38,872**

### AVG. HH SIZE

**2.64**

### MEDIAN HH INCOME

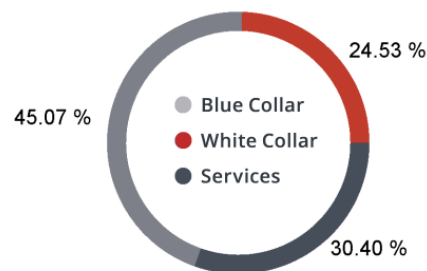
**\$98,246**

### HOME OWNERSHIP

Renters: **3,320**

Owners: **11,359**

### EMPLOYMENT



**51.97 %**

Employed

**0.84 %**

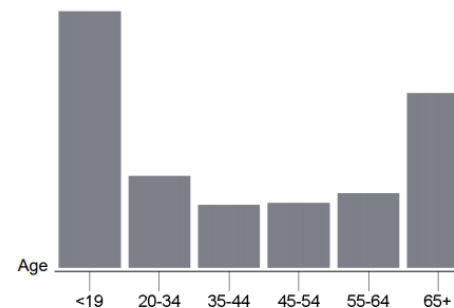
Unemployed

### EDUCATION

High School Grad: **18.83 %**  
 Some College: **17.24 %**  
 Associates: **6.13 %**  
 Bachelors: **58.47 %**

### GENDER & AGE

**49.07 %** **50.93 %**

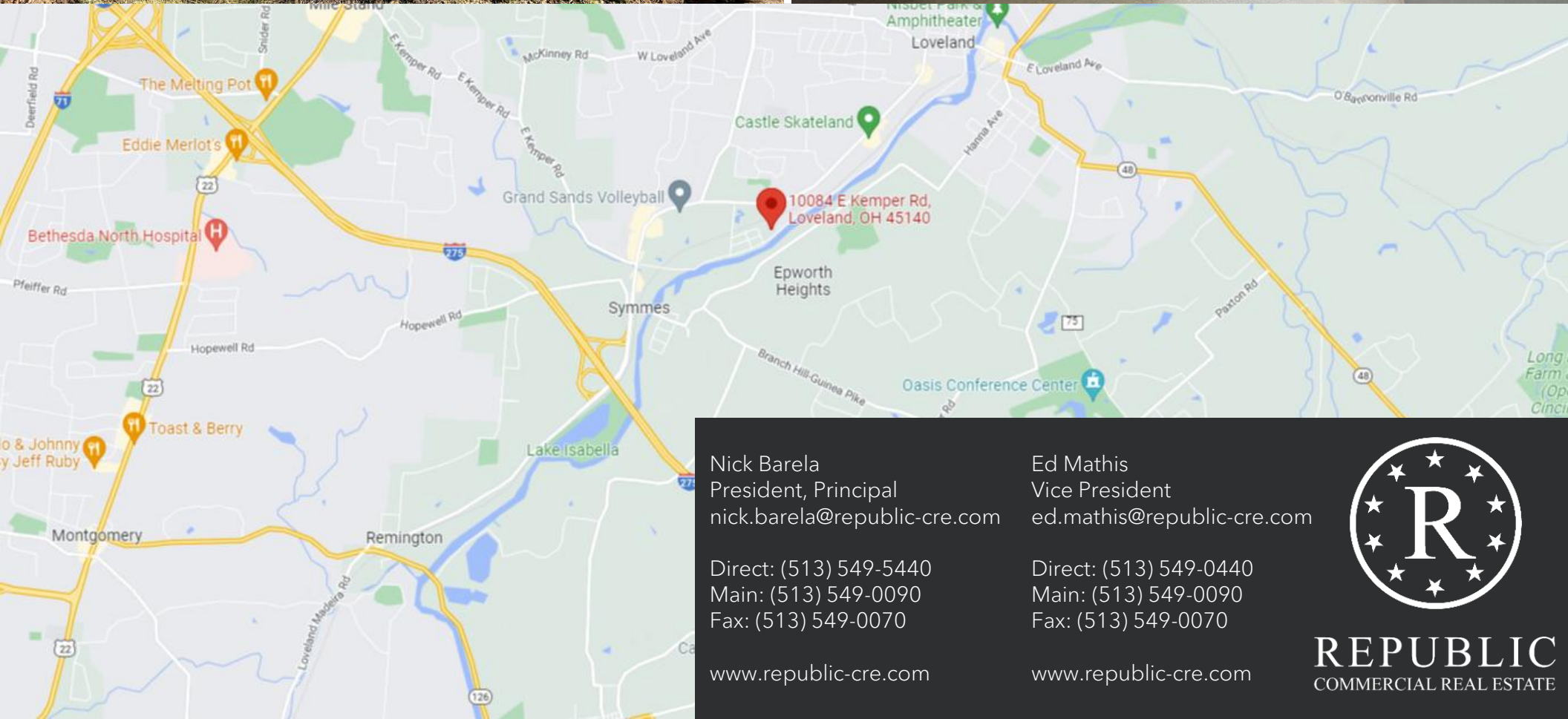


### RACE & ETHNICITY

White: **91.65 %**  
 Asian: **2.60 %**  
 Native American: **0.00 %**  
 Pacific Islanders: **0.00 %**  
 African-American: **1.23 %**  
 Hispanic: **2.80 %**  
 Two or More Races: **1.72 %**

This information supplied herein is from sources we deem reliable. It is provided without any representation, warranty or guarantee, expressed or implied as to its accuracy. Prospective Buyer or Tenant should conduct an independent investigation and verification of all matters deemed to be material, including, but not limited to, statements of income and expenses. Consult your attorney, accountant, or other professional advisor.





Nick Barela  
President, Principal  
[nick.barela@republic-cre.com](mailto:nick.barela@republic-cre.com)

Direct: (513) 549-5440  
Main: (513) 549-0090  
Fax: (513) 549-0070

[www.republic-cre.com](http://www.republic-cre.com)

Ed Mathis  
Vice President  
[ed.mathis@republic-cre.com](mailto:ed.mathis@republic-cre.com)

Direct: (513) 549-0440  
Main: (513) 549-0090  
Fax: (513) 549-0070

[www.republic-cre.com](http://www.republic-cre.com)



**REPUBLIC**  
COMMERCIAL REAL ESTATE