



Investment Properties Corporation

FOR LEASE

TREE FARM


PRIME COMMERCIAL RETAIL LEASING IN NORTH NAPLES



Prime Leasing opportunity located at the NW corner of Immokalee Road & Collier Boulevard

click here!



CONTACT  **(239) 261-3400**

John Cheffy, ext. 182, john@ipcnaples.com
Rob Carroll, ext. 111, rob@ipcnaples.com

Investment Properties Corporation of Naples
3838 Tamiami Trail North Suite 402
Naples Florida 34103-3586
Tel: 239-261-3400 Fax: 249-261-7579 www.ipcnaples.com

Licensed Real Estate Broker

The statement and figures presented herein, while not guaranteed, are secured from sources we believe authoritative. Subject to prior sale, lease, withdrawal and price change without notice.



**Investment
Properties
Corporation**

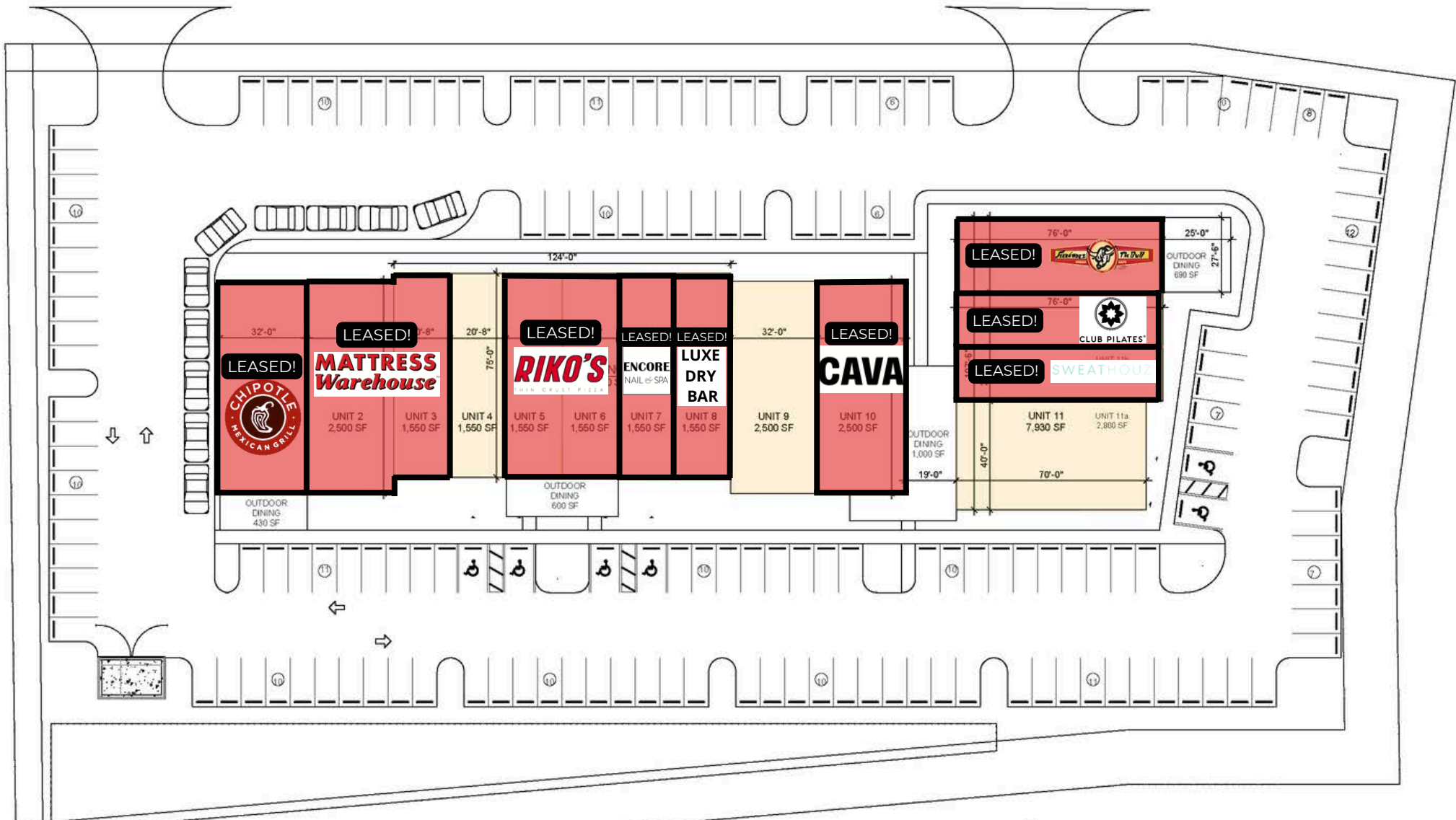
TREE FARM COMMERCIAL RETAIL

PRIME COMMERCIAL RETAIL LEASING IN NORTH NAPLES

RENDERINGS



The statement and figures presented herein, while not guaranteed, are secured from sources we believe authoritative. Subject to prior sale, lease, withdrawal and price change without notice.





**Investment
Properties
Corporation**

TREE FARM COMMERCIAL RETAIL

PRIME COMMERCIAL RETAIL LEASING IN NORTH NAPLES



Investment Properties Corporation of Naples
3838 Tamiami Trail North Suite 402
Naples Florida 34103-3586
Tel: 239-261-3400 Fax: 249-261-7579 www.ipcnaples.com

Licensed Real Estate Broker

The statement and figures presented herein, while not guaranteed, are secured from sources we believe authoritative. Subject to prior sale, lease, withdrawal and price change without notice.



Investment Properties Corporation

TREE FARM COMMERCIAL RETAIL

PRIME COMMERCIAL RETAIL LEASING IN NORTH NAPLES



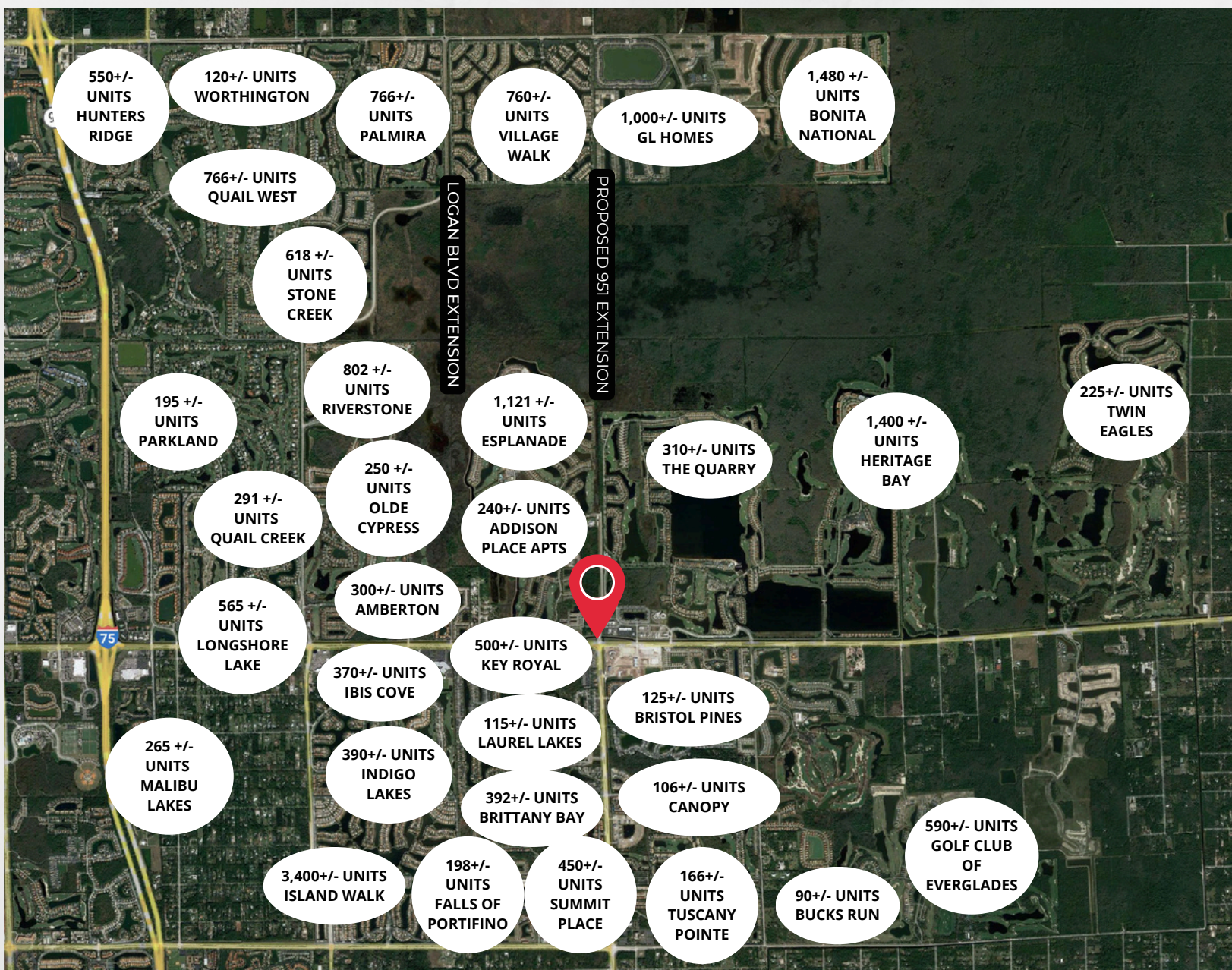
Property is well suited for:

- Retail
- Medical Office
- Professional Office
- Food & Beverage
- Health & Wellness Services

Investment Properties Corporation of Naples
 3838 Tamiami Trail North Suite 402
 Naples Florida 34103-3586
 Tel: 239-261-3400 Fax: 249-261-7579 www.ipcnaples.com

Licensed Real Estate Broker

The statement and figures presented herein, while not guaranteed, are secured from sources we believe authoritative. Subject to prior sale, lease, withdrawal and price change without notice.



Demographics - (2024)	1 mile	3 miles	5 miles
Est. Population	9,721	39,401	89,179
Est. Average Household Income	\$131,580	\$148,845	\$151,881

click here!



Google
Maps