



4505 Burleson

4505 Burleson Rd, Austin, TX 78744

OFFICE SPACE - FOR LEASE

- **5,915 SF Office Space For Lease**
- **Great Location on Burleson Road with Easy Access to Hwy 71**
- **15 Minutes to Downtown Austin**
- **Easy Access from IH-35 and Ben White Blvd**
- **Call Today to Schedule a Tour!**





DEMOGRAPHICS (2023)

	1	3	5
Total Population	8,524	147,982	328,388
Total Households	3,720	57,589	134,625
Average Income	\$70,223	\$82,385	\$97,265
Daytime Employment	8,877	64,780	227,339



For more information please contact:

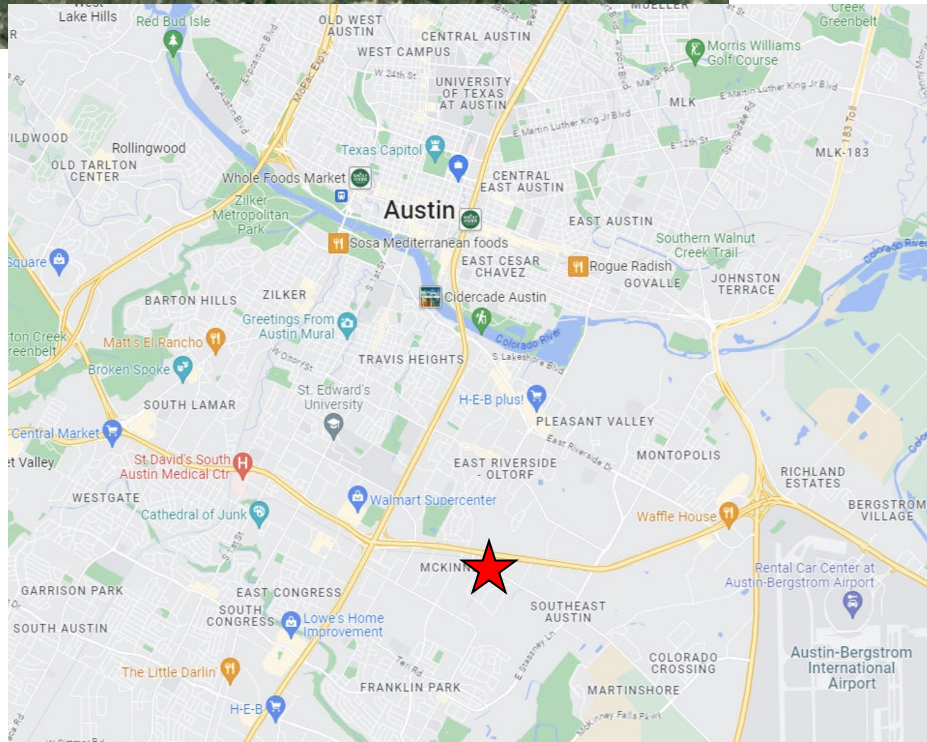
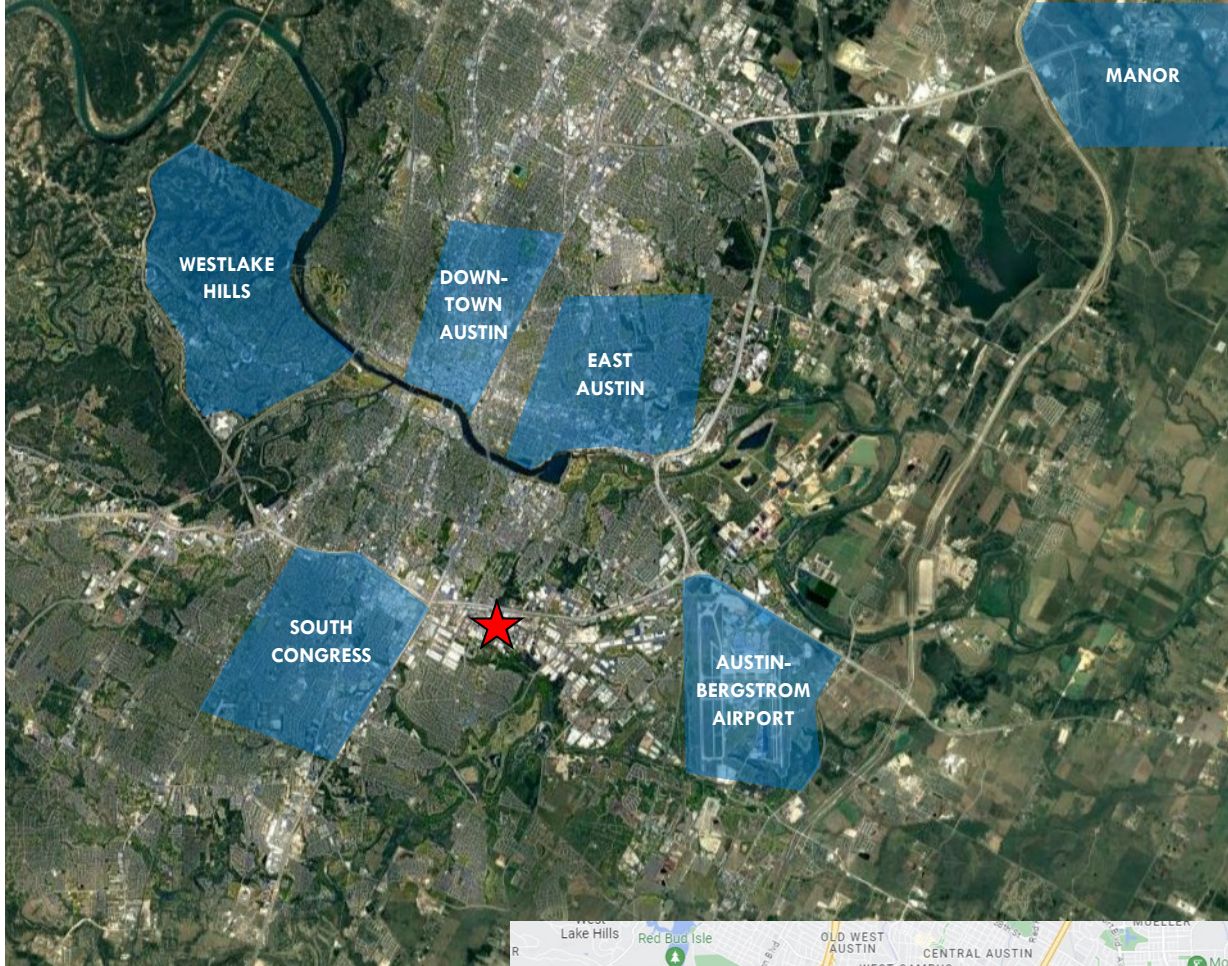
502 East 11th St., Suite 400

Austin, Texas 78701

Nick Tarantino, CCIM nick@tarantino.com

Tel (512) 302-4500, Fax (512) 302-4109





For more information please contact:

Nick Tarantino, CCIM nick@tarantino.com

502 East 11th St., Suite 400

Austin, Texas 78701

Tel (512) 302-4500, Fax (512) 302-4109

www.tarantino.com