

1248 Alameda Street Wilmington, CA 90744

Property Highlights

Features

- Land Size: ± 45,145 SF (± 1.04 Acres)
- Building Size: ± 2,400 SF
- Transloading Platform: 8 Dock-High Positions + 1 Ramp
- Yard: Fully Paved Concrete Yard
- Offices: Six (6) Offices
- Restrooms: Three (3) Restrooms
- Heavy Container Corridor
- Zoning (Simplified): M3 (Heavy Industrial)
- Current Use: Trucking, logistics, drayage, container storage, container stacking, overweight container transloading, etc.
- View on Map: [Click Here](#)
- Rehab Completed:
 - » New 25' Rolling Gate and 8' existing block wall with wrought Iron Fence facing Alameda.
 - » New 8' Wrought Iron Fence and New 35' Gate installed along M Street
 - » New Guard Rails and 2 New Load Levelers will be installed at the dock platform.
 - » Exterior lighting will be installed in yard and fresh paint throughout the property.
 - » Pole Sign with Alameda frontage.
 - » ± 5 Stripped Parking stalls in front of building.
 - » New Roof, new HVAC in offices and fresh paint/flooring throughout.
 - » New 2 Roll Up Industrial Doors in the warehouse. Drive thru capability.
 - » New Electrical wiring throughout and Electrical Panel 200-amp 120/240 volt, 3 phase 4 wire DELTA.
 - » New Recessed Lights, new water heater and new exterior lighting.
 - » New "Turn Key" Offices, 3 Restrooms with new fixtures and kitchenet
 - » New Asphalt yard
 - » New waterlines & plumbing

Asking Purchase Price:
\$8,975,000.00 (\$199 PSF)

*Reduced from \$9,931,300.00 (\$220 PSF)

Asking Lease Rate:
\$0.90 PSF NNN

*Reduced from \$1.10 PSF NNN Per Month (± \$0.11 opex)

Contact us:

Lary Carlton

Senior Vice President
+1 562 547 8994
lary.carlton@colliers.com

Kyle Degener

Senior Vice President
+1 310 321 1805
kyle.degener@colliers.com

Amanda DePierro

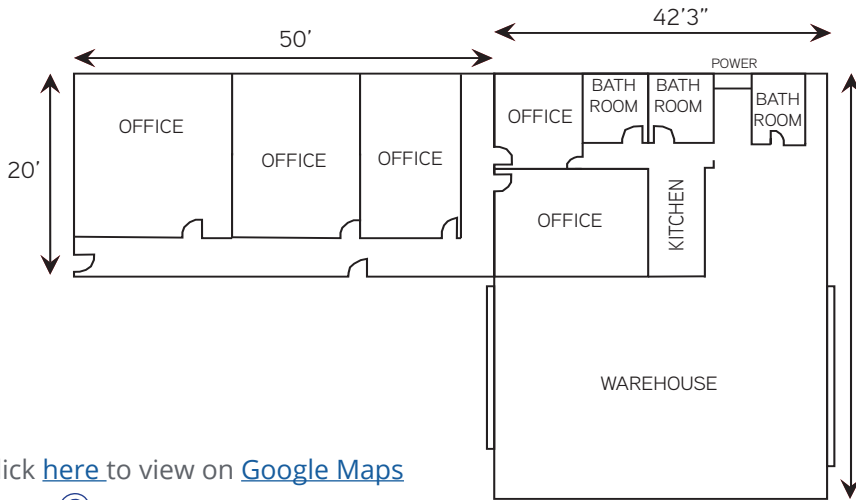
Senior Associate
+1 310 321 1817
amanda.depierro@colliers.com

Colliers International

2141 Rosecrans Ave, Suite 1120
El Segundo, CA 90245
P: +1 310 787 1000

Location

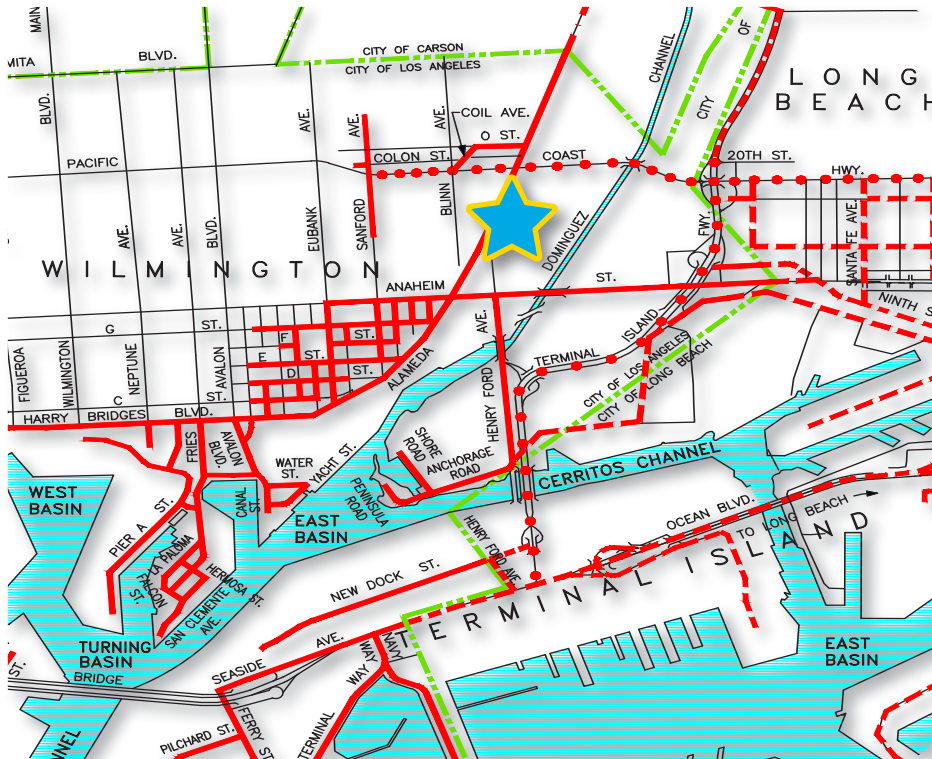
Building Floor Plan



Click [here](#) to view on [Google Maps](#)



Overweight Container Corridor Map



Contact us:

Lary Carlton

Senior Vice President
+1 562 547 8994
lary.carlton@colliers.com

Kyle Degener

Senior Vice President
+1 310 321 1805
kyle.degener@colliers.com

Amanda DePierro

Senior Associate
+1 310 321 1817
amanda.depierro@colliers.com

Colliers International

2141 Rosecrans Ave, Suite 1120
El Segundo, CA 90245
P: +1 310 787 1000

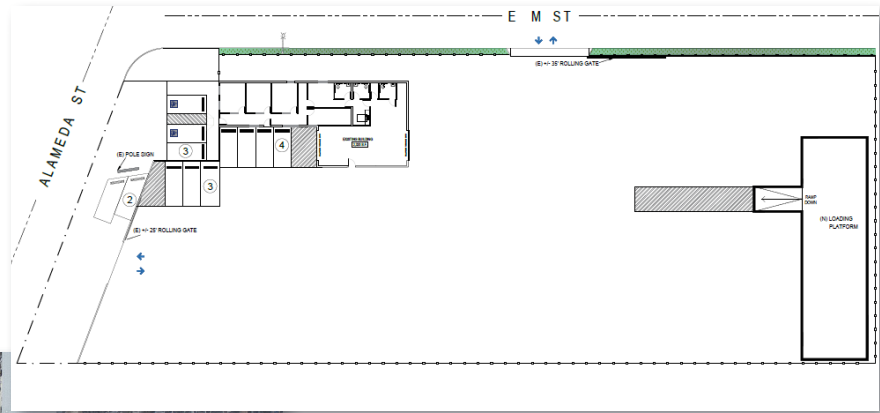
Photos



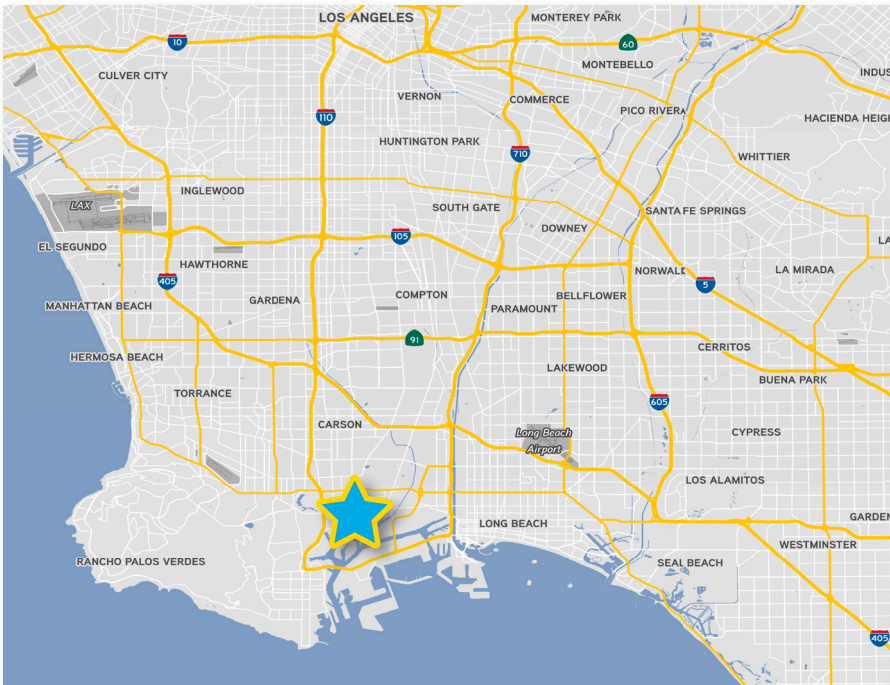
Location

Site Plan

Aerial



Map



Contact us:

Lary Carlton

Senior Vice President
+1 562 547 8994
lary.carlton@colliers.com

Kyle Degener

Senior Vice President
+1 310 321 1805
kyle.degener@colliers.com

Amanda DePierro

Senior Associate
+1 310 321 1817
amanda.depierro@colliers.com

Colliers International

2141 Rosecrans Ave, Suite 1120
El Segundo, CA 90245
P: +1 310 787 1000