

8,000 SF OFFICE/RETAIL/WAREHOUSE AND 3,360 SF RESTAURANT/RETAIL



Flex/Office/Retail/Warehouse

5 Kitties Landing

Bluffton, South Carolina 29910

Property Highlights

- Two new buildings to be constructed in the heart of Bluffton, SC
- Building 1 will be approx. 8,000 SF of flex space that can be subdivided into units as small as approximately 1,500 SF (subject to confirmation). Perfect for office, retail, or warehouse uses.
- Building 2 will be approx. 3,360 SF of restaurant/retail space with a grease trap and also could be subdivided
- Located in a highly trafficked area with in close proximity to residential communities such as Belfair, Colleton River, and Berkeley Hall as well as anchor stores including Wal-Mart, Sam's Club, Target, and Dick's Sporting Goods
- Excellent access to all of Bluffton, Hilton Head Island, I-95, Beaufort, and Savannah, GA

Offering Summary

Lease Rate:	\$25.00 SF/yr (NNN)
Building 1 Size:	8,000 SF
Building 1 Type:	Flex with Warehouse
Building 2 Size:	3,360 SF
Building 2 Type:	Restaurant / Retail
Tenant Improvement Allowance:	Contact Agent
Lot Size:	1.41 AC

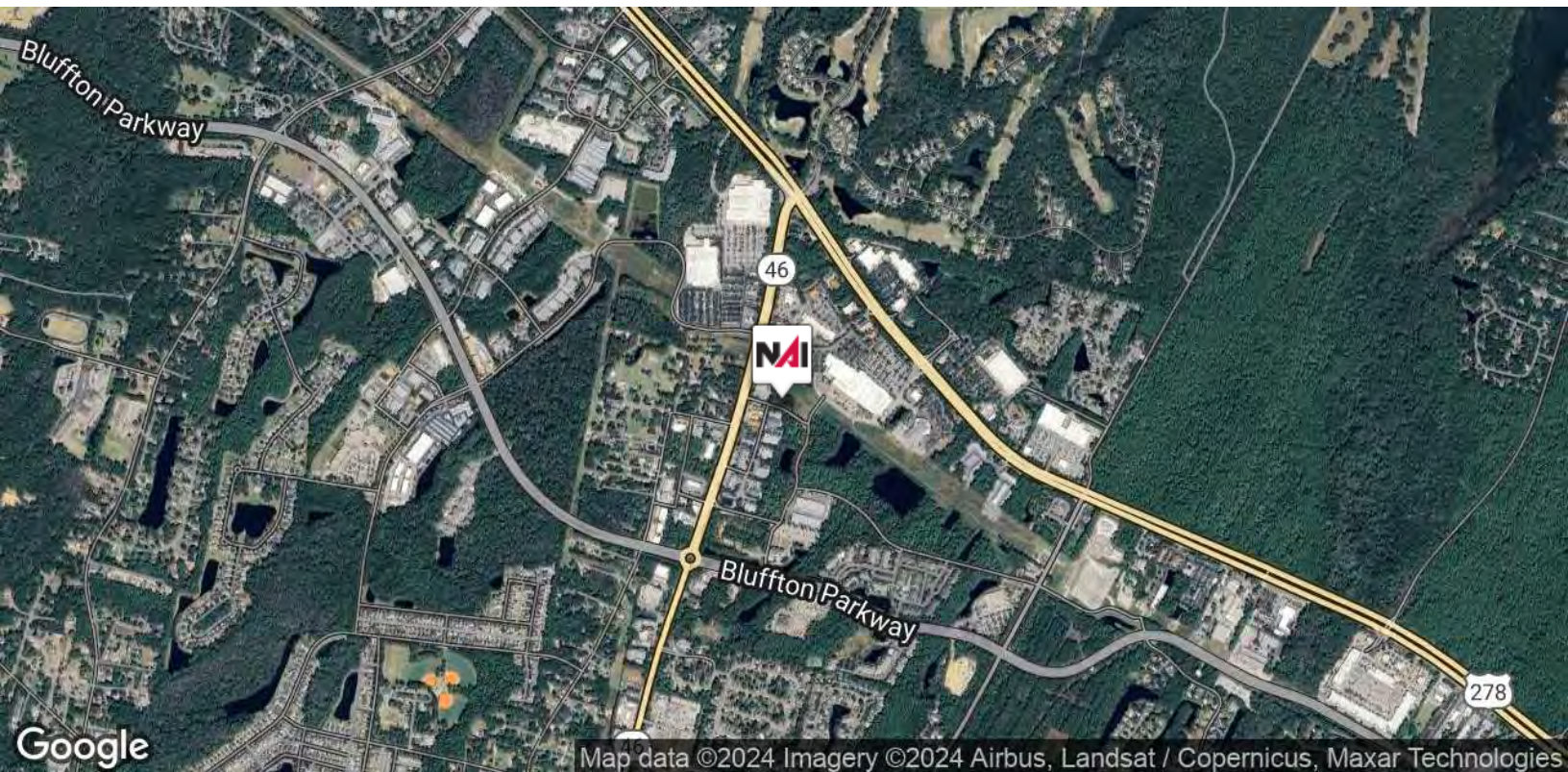
For More Information

David Bachelder Jr.

O: 843 837 4460 x4

davidjr@naicarolinacharter.com

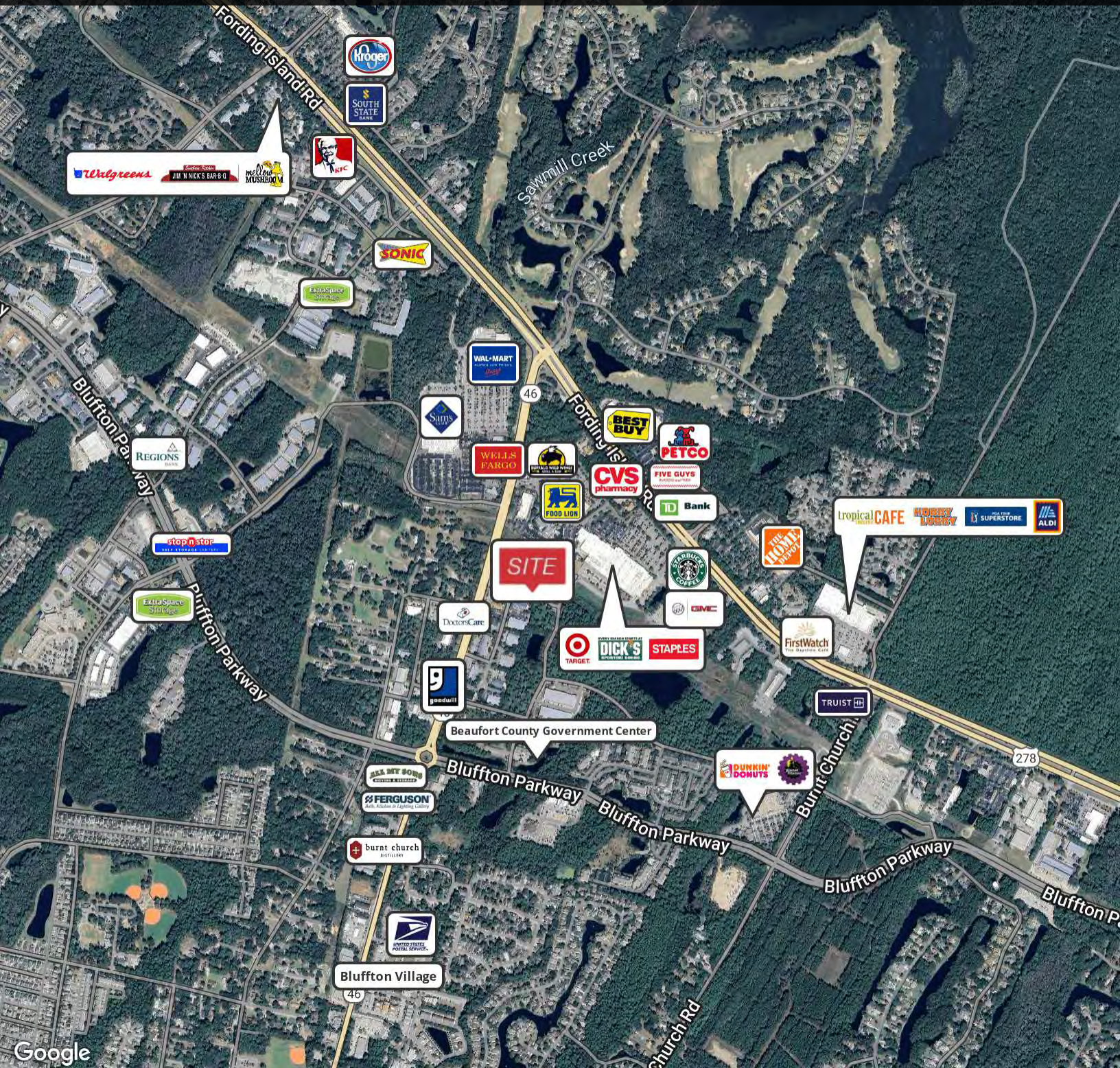
8,000 SF OFFICE/RETAIL/WAREHOUSE AND 3,360 SF RESTAURANT/RETAIL



We obtained the information above from sources we believe to be reliable. However, we have not verified its accuracy and make no guarantee, warranty or representation about it. It is submitted subject to the possibility of errors, omissions, change of price, rental or other conditions, prior sale, lease or financing, or withdrawal without notice. We include projections, opinions, assumptions or estimates for example only, and they may not represent current or future performance of the property. You and your tax and legal advisors should conduct your own investigation of the property and transaction.

1227 May River Road, Suite 100
Bluffton, SC 29910
843 837 4460 tel
naicarolinacharter.com

8,000 SF OFFICE/RETAIL/WAREHOUSE AND 3,360 SF RESTAURANT/RETAIL



We obtained the information above from sources we believe to be reliable. However, we have not verified its accuracy and make no guarantee, warranty or representation about it. It is submitted subject to the possibility of errors, omissions, change of price, rental or other conditions, prior sale, lease or financing, or withdrawal without notice. We include projections, opinions, assumptions or estimates for example only, and they may not represent current or future performance of the property. You and your tax and legal advisors should conduct your own investigation of the property and transaction.

1227 May River Road, Suite 100
Bluffton, SC 29910
843 837 4460 tel
naicarolinacharter.com

8,000 SF OFFICE/RETAIL/WAREHOUSE AND 3,360 SF RESTAURANT/RETAIL



We obtained the information above from sources we believe to be reliable. However, we have not verified its accuracy and make no guarantee, warranty or representation about it. It is submitted subject to the possibility of errors, omissions, change of price, rental or other conditions, prior sale, lease or financing, or withdrawal without notice. We include projections, opinions, assumptions or estimates for example only, and they may not represent current or future performance of the property. You and your tax and legal advisors should conduct your own investigation of the property and transaction.

1227 May River Road, Suite 100
Bluffton, SC 29910
843 837 4460 tel
naicarolinacharter.com

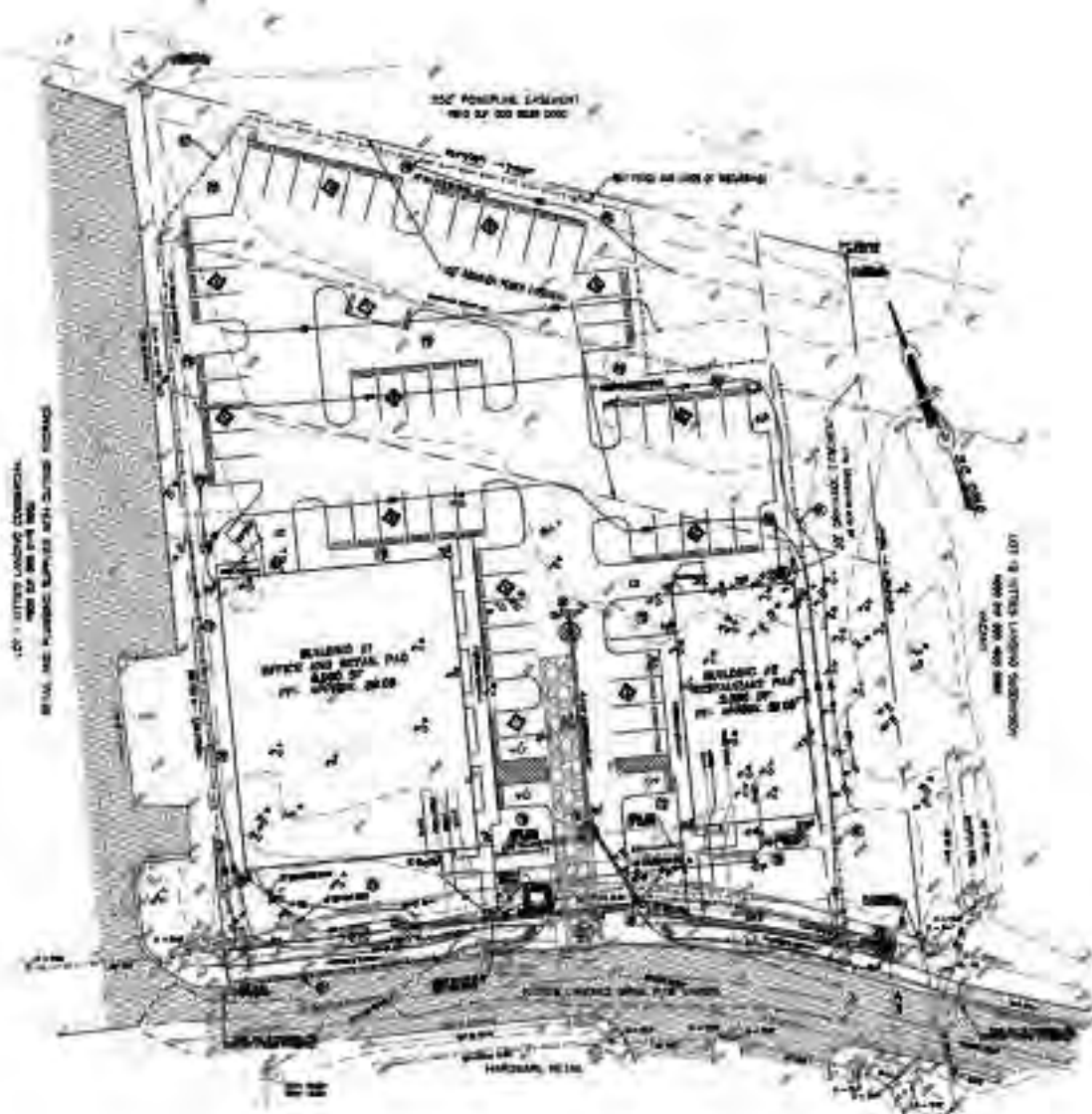
8,000 SF OFFICE/RETAIL/WAREHOUSE AND 3,360 SF RESTAURANT/RETAIL



We obtained the information above from sources we believe to be reliable. However, we have not verified its accuracy and make no guarantee, warranty or representation about it. It is submitted subject to the possibility of errors, omissions, change of price, rental or other conditions, prior sale, lease or financing, or withdrawal without notice. We include projections, opinions, assumptions or estimates for example only, and they may not represent current or future performance of the property. You and your tax and legal advisors should conduct your own investigation of the property and transaction.

1227 May River Road, Suite 100
Bluffton, SC 29910
843 837 4460 tel
naicarolinacharter.com

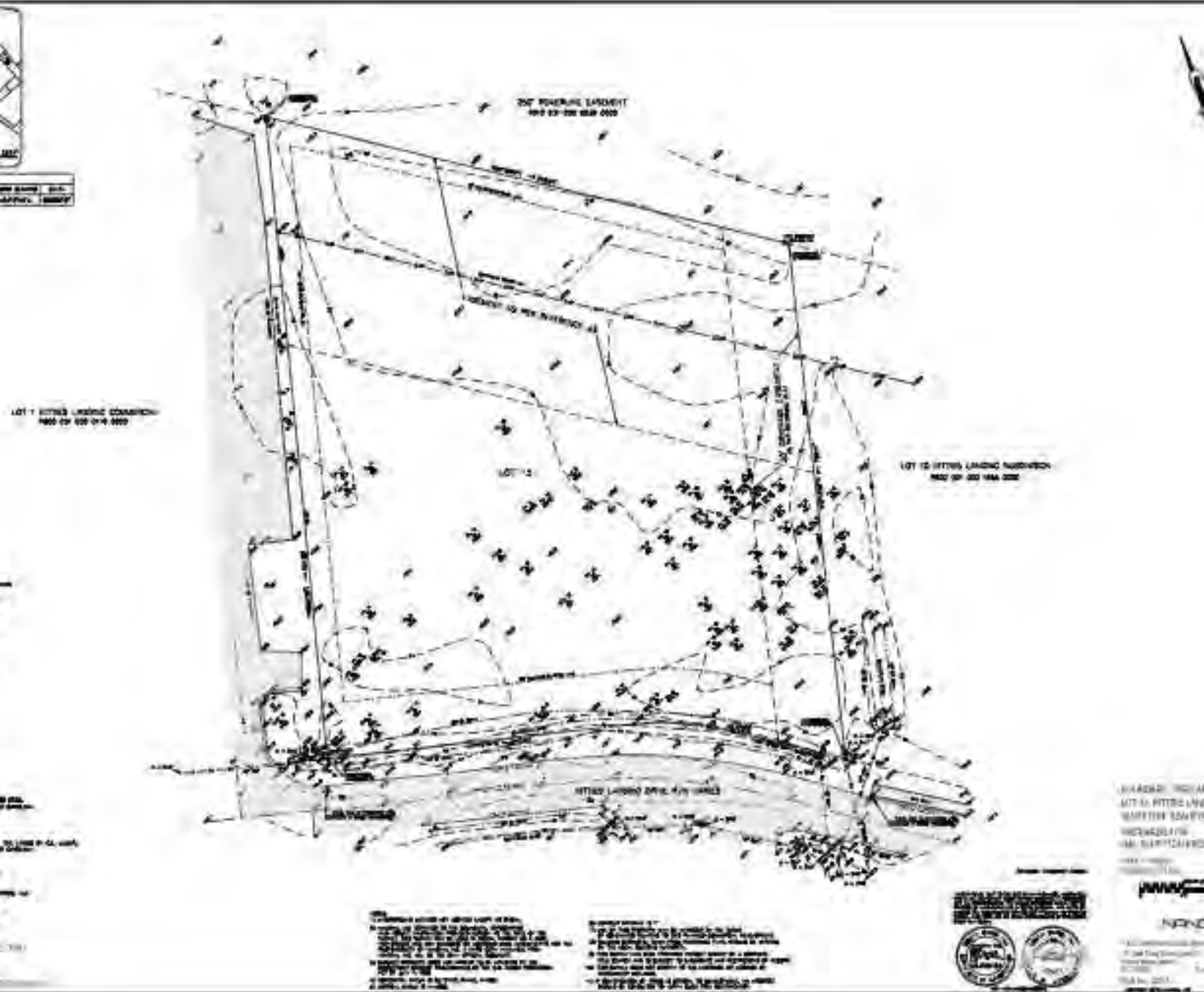
8,000 SF OFFICE/RETAIL/WAREHOUSE AND 3,360 SF RESTAURANT/RETAIL



We obtained the information above from sources we believe to be reliable. However, we have not verified its accuracy and make no guarantee, warranty or representation about it. It is submitted subject to the possibility of errors, omissions, change of price, rental or other conditions, prior sale, lease or financing, or withdrawal without notice. We include projections, opinions, assumptions or estimates for example only, and they may not represent current or future performance of the property. You and your tax and legal advisors should conduct your own investigation of the property and transaction.

1227 May River Road, Suite 100
Bluffton, SC 29910
843 837 4460 tel
naicarolinacharter.com

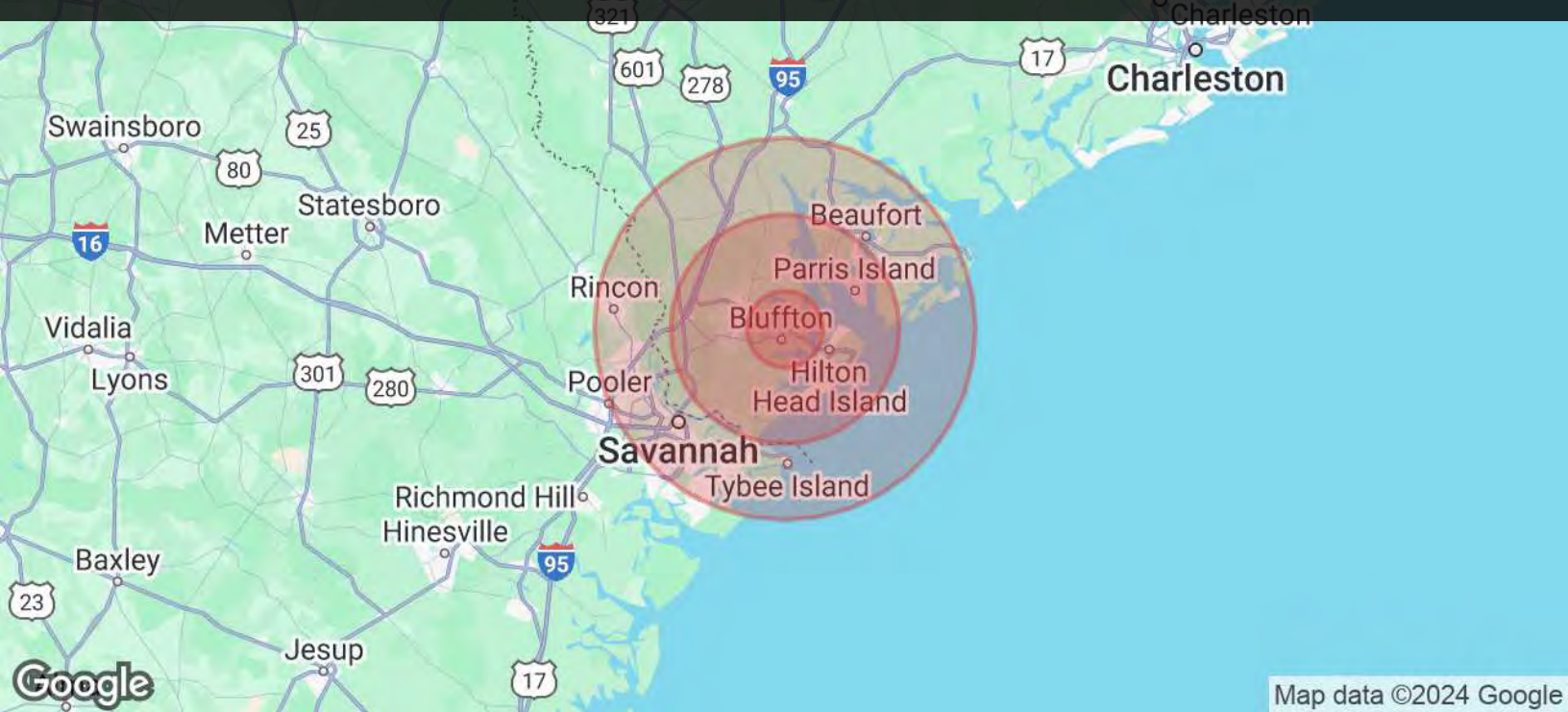
8,000 SF OFFICE/RETAIL/WAREHOUSE AND 3,360 SF RESTAURANT/RETAIL



We obtained the information above from sources we believe to be reliable. However, we have not verified its accuracy and make no guarantee, warranty or representation about it. It is submitted subject to the possibility of errors, omissions, change of price, rental or other conditions, prior sale, lease or financing, or withdrawal without notice. We include projections, opinions, assumptions or estimates for example only, and they may not represent current or future performance of the property. You and your tax and legal advisors should conduct your own investigation of the property and transaction.

1227 May River Road, Suite 100
Bluffton, SC 29910
843 837 4460 tel
naicarolinacharter.com

8,000 SF OFFICE/RETAIL/WAREHOUSE AND 3,360 SF RESTAURANT/RETAIL



Map data ©2024 Google

Population	5 Miles	15 Miles	25 Miles
Total Population	44,446	175,934	488,451
Average Age	43	47	43
Average Age (Male)	42	46	42
Average Age (Female)	44	48	44
Households & Income	5 Miles	15 Miles	25 Miles
Total Households	17,403	73,673	198,824
# of Persons per HH	2.6	2.4	2.5
Average HH Income	\$110,790	\$113,491	\$98,858
Average House Value	\$550,764	\$562,000	\$445,716

Demographics data derived from AlphaMap