

For Lease

5989 Hucks Road
Charlotte, NC

SilverPark North I

105,384 s.f. rear-load warehouse

Less than 1 mile to I-485 and less than 2 miles to I-77

Walls Tilted
Delivering
January 2025



Matthew Greer, CCIM, SIOR
704.804.5762
matthew.greer@jll.com

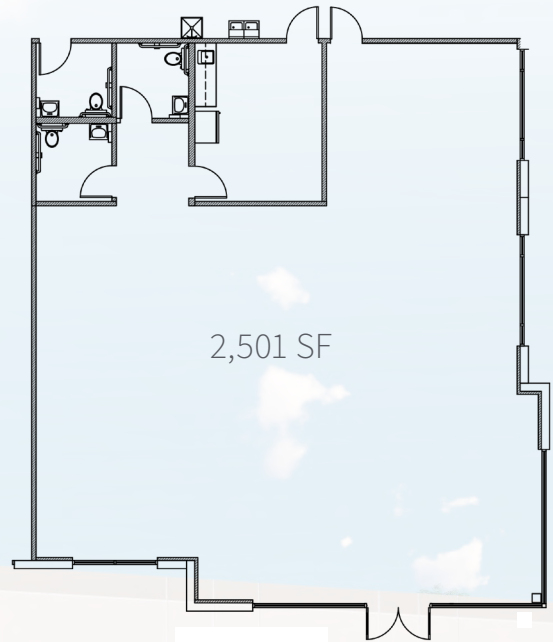
Brad Cherry, CCIM, SIOR
704.927.3013
brad.cherry@jll.com



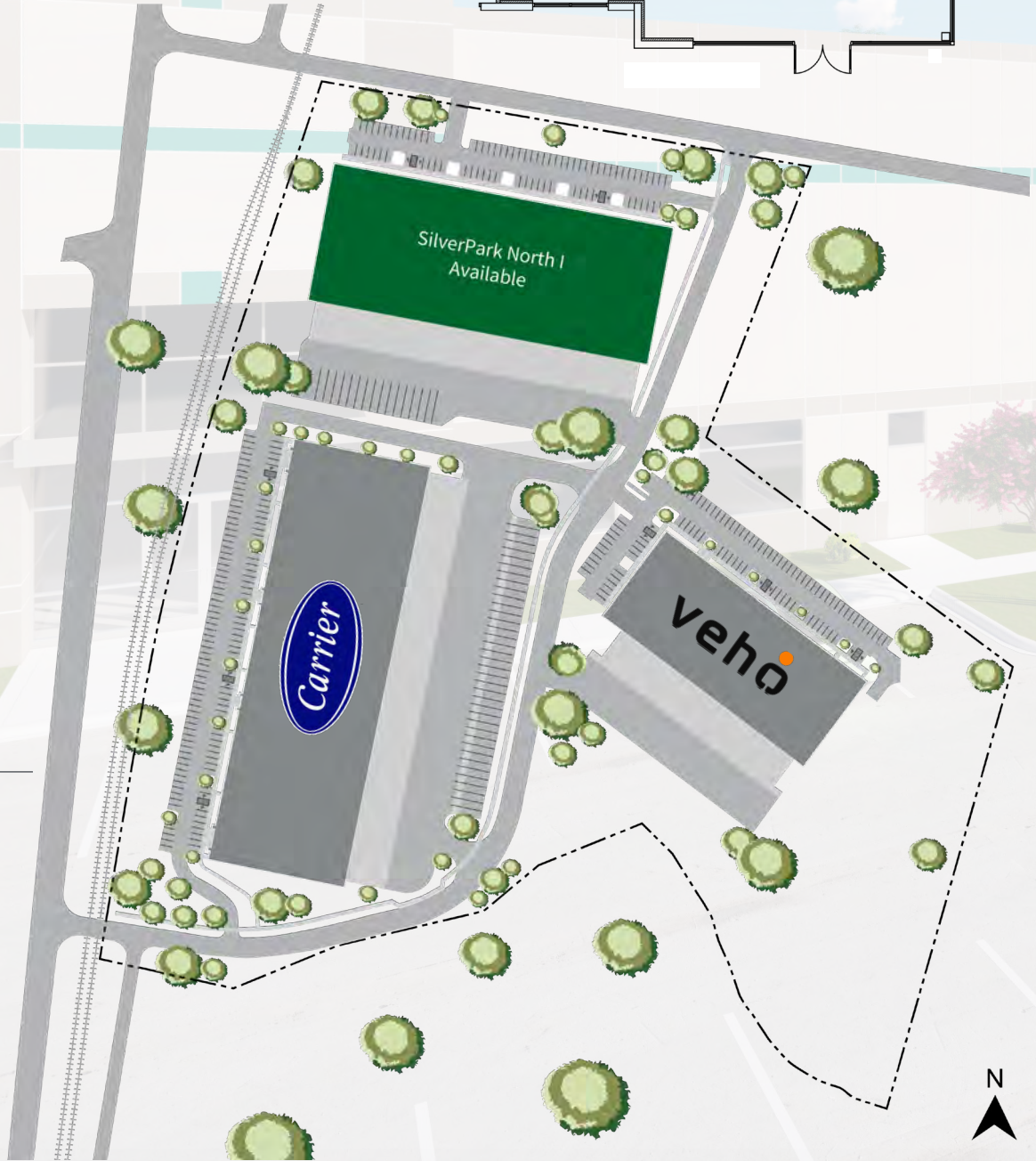
Park photos



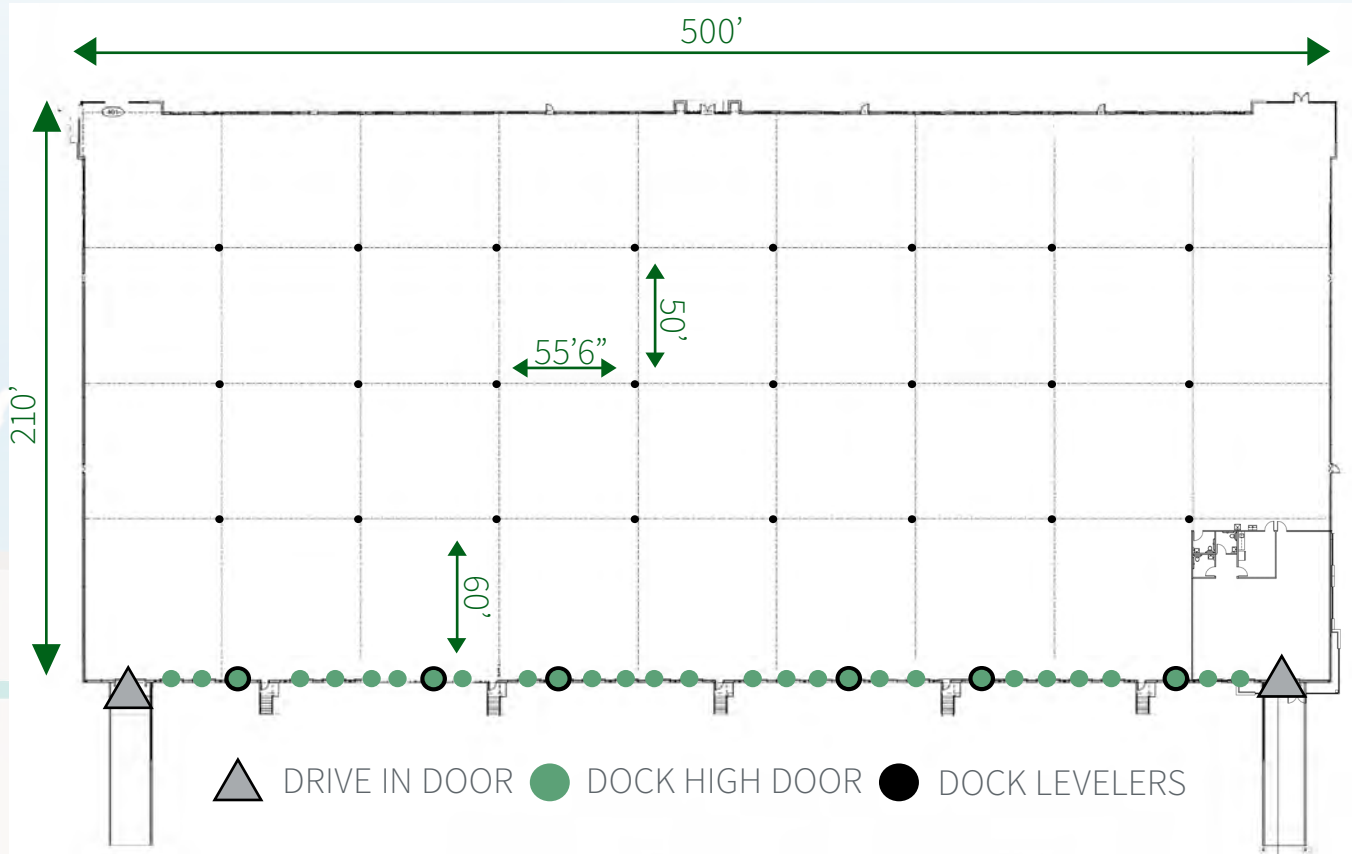
Office plan



Site plan



Building specifications



Total building	105,384 s.f. (210' x 500')	Columnspacing	50' x 55'6", with 60' speed bay
Available	±35,000 - ±105,384 s.f.	Dock high doors	20 (9' x 10' with view panel) 9 additional knockouts
Office Size	2,501 SF	Drive-in doors	2 (12' x 14')
Lighting	LED	Dock Levelers	6 dock packages
Floor	6" reinforced concrete slab (4000 psi)	Power	400 Amps, 3PH, 480V
Clear height	32'	Sprinkler	ESFR
Zoning	ML-2, CD	Roof	TPO warranted
Utilities	Duke Power, PNG, City of Charlotte (water and sewer)	Car Parking	±86 auto spaces ±15 truck spaces



Old Statesville Rd

LOCATION

- ±1 MILE TO I-485
- ±2 MILES TO I-77
- ±5 MILES TO I-85
- ±15 MILES TO CHARLOTTE CBD
- ±20 MILES TO CLT INT'L AIRPORT



SilverPark North Site

W.T. HARRIS BLVD

