

FOR LEASE

1310 WESTWOOD BLVD

Modern Westwood Office with Prime Westwood Blvd Frontage



LOS ANGELES, CA 90024

km Kidder
Mathews

Property Highlights

Excellent space for production companies, creative offices, architectural firm, professional services

Prime Westwood Blvd frontage

Westwood Village is future host of the 2028 Olympics: Set to become an iconic destination with global exposure

1 tandem parking on site, additional available in nearby Oppenheimer building

Ample street parking

Close to upcoming Westwood/UCLA Metro Station: Anticipated Purple Line stop in 2027

Plans in place for open rooftop area

Secured, 24/7 access to building



KIDDER.COM

This information supplied herein is from sources we deem reliable. It is provided without any representation, warranty, or guarantee, expressed or implied as to its accuracy. Prospective Buyer or Tenant should conduct an independent investigation and verification of all matters deemed to be material, including, but not limited to, statements of income and expenses. Consult your attorney, accountant, or other professional advisor.



Space Highlights

Space features: ±2,345 SF, Second Floor

Turnkey: Move-in ready with Premium Finishes

Private bathrooms

Reception & Kitchen Area

Separate HVAC

Full Security System

4 Windowed Offices with support area

ADA accessible

RENT \$4.50 FSG

OCCUPANCY Immediate

±2,345 SF
AVAILABLE

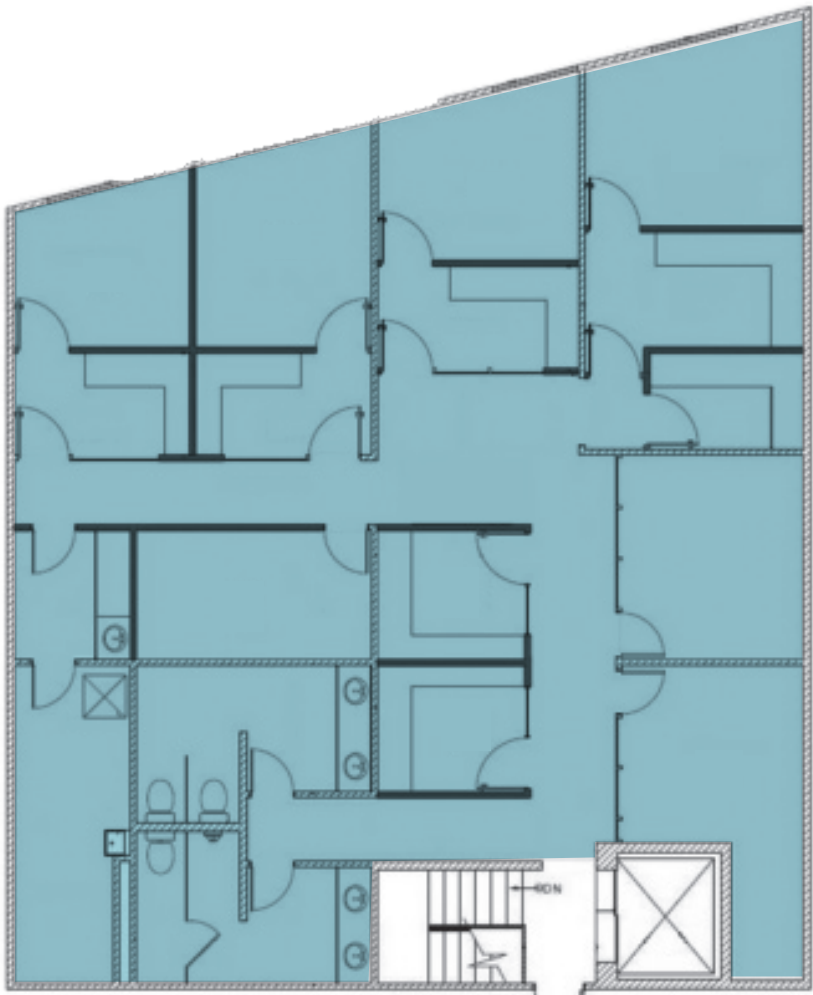
\$4.50
LEASE RATE/ FSG

KIDDER.COM

This information supplied herein is from sources we deem reliable. It is provided without any representation, warranty, or guarantee, expressed or implied as to its accuracy. Prospective Buyer or Tenant should conduct an independent investigation and verification of all matters deemed to be material, including, but not limited to, statements of income and expenses. Consult your attorney, accountant, or other professional advisor.



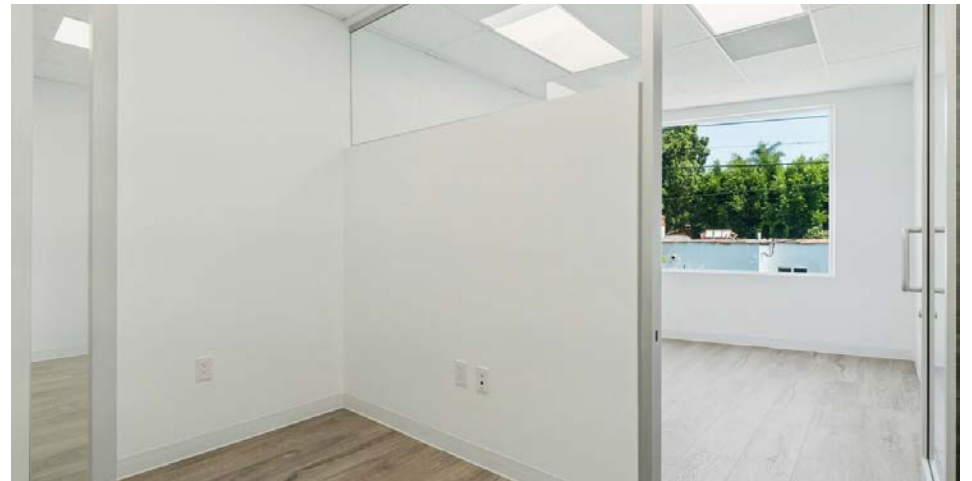
FLOOR PLAN - 2ND FLOOR



KIDDER.COM

This information supplied herein is from sources we deem reliable. It is provided without any representation, warranty, or guarantee, expressed or implied as to its accuracy. Prospective Buyer or Tenant should conduct an independent investigation and verification of all matters deemed to be material, including, but not limited to, statements of income and expenses. Consult your attorney, accountant, or other professional advisor.

SPACE PHOTOS

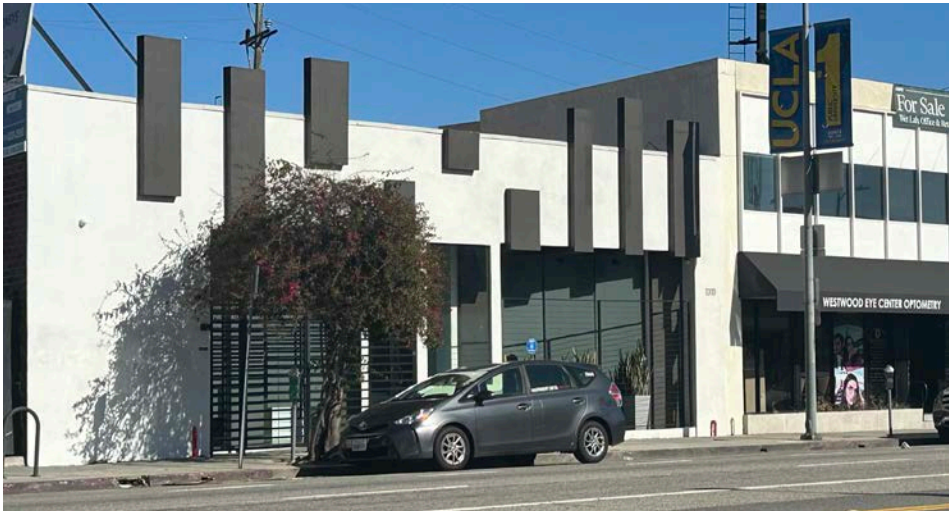


*Call for additional suite photos

[KIDDER.COM](https://www.kidder.com)

This information supplied herein is from sources we deem reliable. It is provided without any representation, warranty, or guarantee, expressed or implied as to its accuracy. Prospective Buyer or Tenant should conduct an independent investigation and verification of all matters deemed to be material, including, but not limited to, statements of income and expenses. Consult your attorney, accountant, or other professional advisor.

COMMON AREA



KIDDER.COM

This information supplied herein is from sources we deem reliable. It is provided without any representation, warranty, or guarantee, expressed or implied as to its accuracy. Prospective Buyer or Tenant should conduct an independent investigation and verification of all matters deemed to be material, including, but not limited to, statements of income and expenses. Consult your attorney, accountant, or other professional advisor.



Westwood Overview

Westwood Village is centrally located in the heart of Los Angeles, serving the neighborhoods of Holmby Hills, Bel Air, Wilshire Corridor, Brentwood, Pacific Palisades, Beverly Hills, West Hollywood and Santa Monica. Westwood Village is being revitalized with a unique collection of retail business, galleries and restaurants that cater to all of West Los Angeles and is surrounded by approximately 9 Million square feet of leased office space and home to UCLA with over 60,000 students and The Ronald Reagan Hospital with over 1 million square feet of space and considered the Best Hospital in the West! Under construction of over 1,200 new student housing units!

DEMOGRAPHICS

	2 Mile	5 Miles
2024 POPULATION	151,826	620,288
2029 PROJ. POPULATION	149,899	608,614
AVG HH INCOME	\$131,778	\$136,211
2024 EMPLOYEES	192,175	576,718



1310 WESTWOOD BLVD

*For more information on
this property, please contact*

BRITTNEY MCCARTHY
424.653.1825
brittney.mccarthy@kidder.com
LIC N° 01947053

HELEN TRAN
424.653.1822
helen.tran@kidder.com
LIC N° 02238650

SUZANNE LAFF
424.653.1853
suzanne.laff@kidder.com
LIC N° 01058946

KIDDER.COM

This information supplied herein is from sources we deem reliable. It is provided without any representation, warranty, or guarantee, expressed or implied as to its accuracy. Prospective Buyer or Tenant should conduct an independent investigation and verification of all matters deemed to be material, including, but not limited to, statements of income and expenses. Consult your attorney, accountant, or other professional advisor. All Kidder Mathews designs are the sole property of Kidder Mathews. Branded materials and layouts are not authorized for use by any other firm or person.

