



FOR SALE

**8401 NW SOUTH RIVER DR.
MEDLEY, FL 33166**

RESTAURANT ON LARGE LOT

STL
COMMERCIAL

OVERVIEW

Prime Opportunity to acquire a turn-key restaurant and parking lot at an affordable price point. The property is located in Medley, a business oriented community home to over 1,800 businesses and a multitude of residents.

This property is ideal for a restaurant user who is looking for a location with high traffic volume.

The property has frontage on River Drive as well as frontage on the river adjacent to Okeechobee Road, which gives the property excellent signage potential. Okeechobee Road sees 60,500 vehicles per day.

The property also has easy access to the Palmetto Expressway. The property will be delivered vacant.

SITE SUMMARY

ASKING PRICE: \$925,000

LOT SIZE: 10,450 SF

BUILDING SIZE: 1,638 SF

CURRENT USE: RESTAURANT

PROPERTY FIXTURES: Grease Trap,
Hood, Walk-In
Cooler

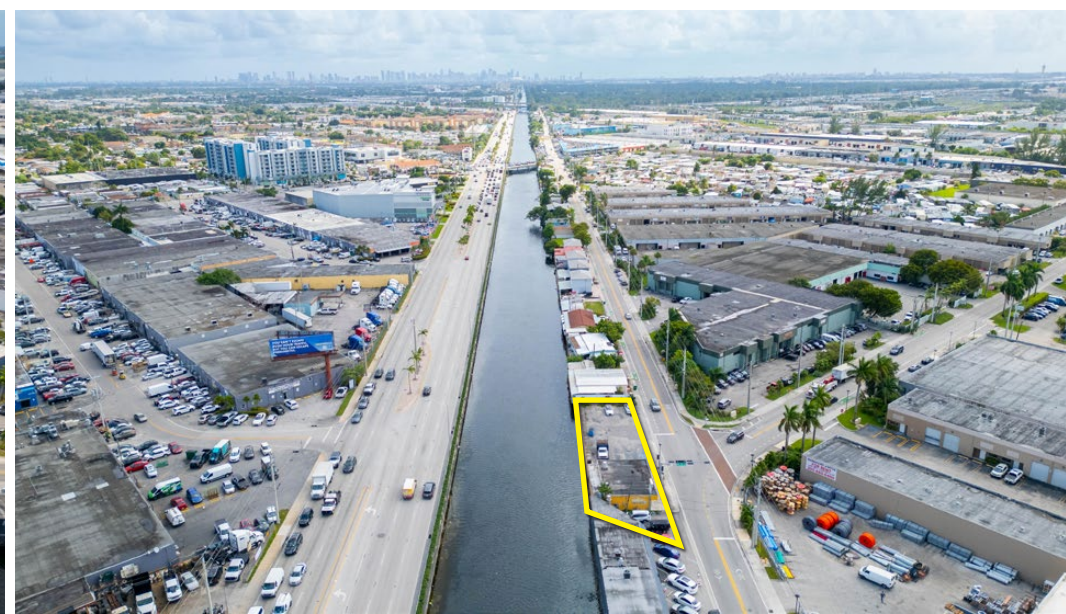
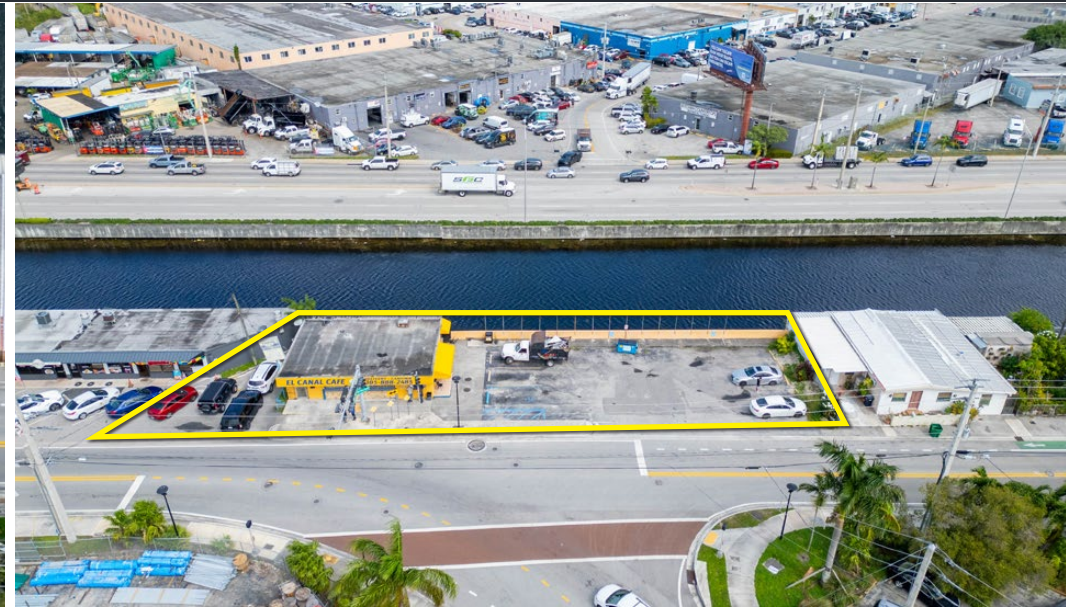
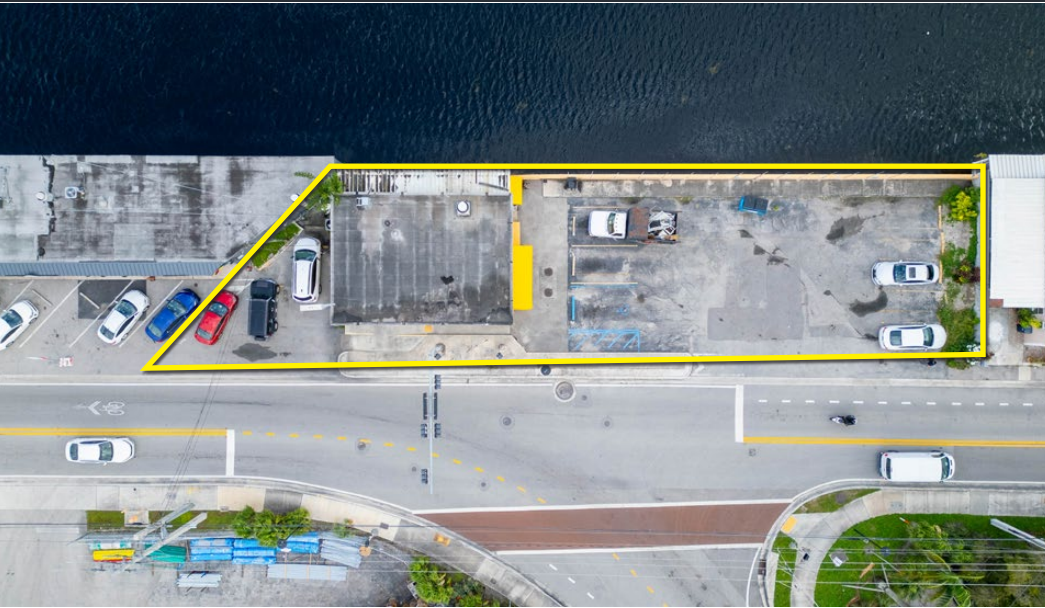


8401 NW S RIVER DRIVE - MIAMI, FL 33166

BRIAN PINEIRO | COMMERCIAL ADVISOR | 786.382.9900
ALEX TSOULFAS | PRESIDENT | 305.972.7217

This information has been obtained from sources believed reliable. We have not verified it and make no guarantee, warranty or representation about it.

AERIAL IMAGES



8401 NW S RIVER DRIVE - MIAMI, FL 33166

BRIAN PINEIRO | COMMERCIAL ADVISOR | 786.382.9900
ALEX TSOULFAS | PRESIDENT | 305.972.7217

This information has been obtained from sources believed reliable. We have not verified it and make no guarantee, warranty or representation about it.

EXTERIOR PHOTOS



8401 NW S RIVER DRIVE - MIAMI, FL 33166

BRIAN PINEIRO | COMMERCIAL ADVISOR | 786.382.9900

ALEX TSOULFAS | PRESIDENT | 305.972.7217

This information has been obtained from sources believed reliable. We have not verified it and make no guarantee, warranty or representation about it.

INTERIOR PHOTOS



8401 NW S RIVER DRIVE - MIAMI, FL 33166

BRIAN PINEIRO | COMMERCIAL ADVISOR | 786.382.9900

ALEX TSOULFAS | PRESIDENT | 305.972.7217

This information has been obtained from sources believed reliable. We have not verified it and make no guarantee, warranty or representation about it.



BRIAN PINEIRO
COMMERCIAL ADVISOR
BRIAN@STL-ADVISORS.COM
786.382.9900

ALEX TSOULFAS
PRESIDENT
ALEX@STL-ADVISORS.COM
305.972.7217