

6209-6237 DIVISION AVENUE S
GRAND RAPIDS, MICHIGAN

RETAIL FOR LEASE
1,500 – 5,750 Square Feet Available



**SIGNATURE
ASSOCIATES**
KNOW SIGNATURE | KNOW RESULTS



PROPERTY FEATURES

- 14,096 total building square footage
- 1,500-5,750 square feet available
- Located on 1.308 acres
- 14' ceiling height
- Zoned B-2
- Built in 1994; Renovated in 2020
- Lease Rate: \$12.00 - \$20.00/sf
- 2024 Estimated NNN Expense: \$3.05/sf

Comments: Prime Retail Space with two suites available. End cap, turn-key restaurant and smaller storefront. Great location off South Division Avenue. Less than 3 minutes from US 131. 90+ parking spaces with over 260 feet of frontage. Comes with pole signage and building signage.



For more information, please contact:

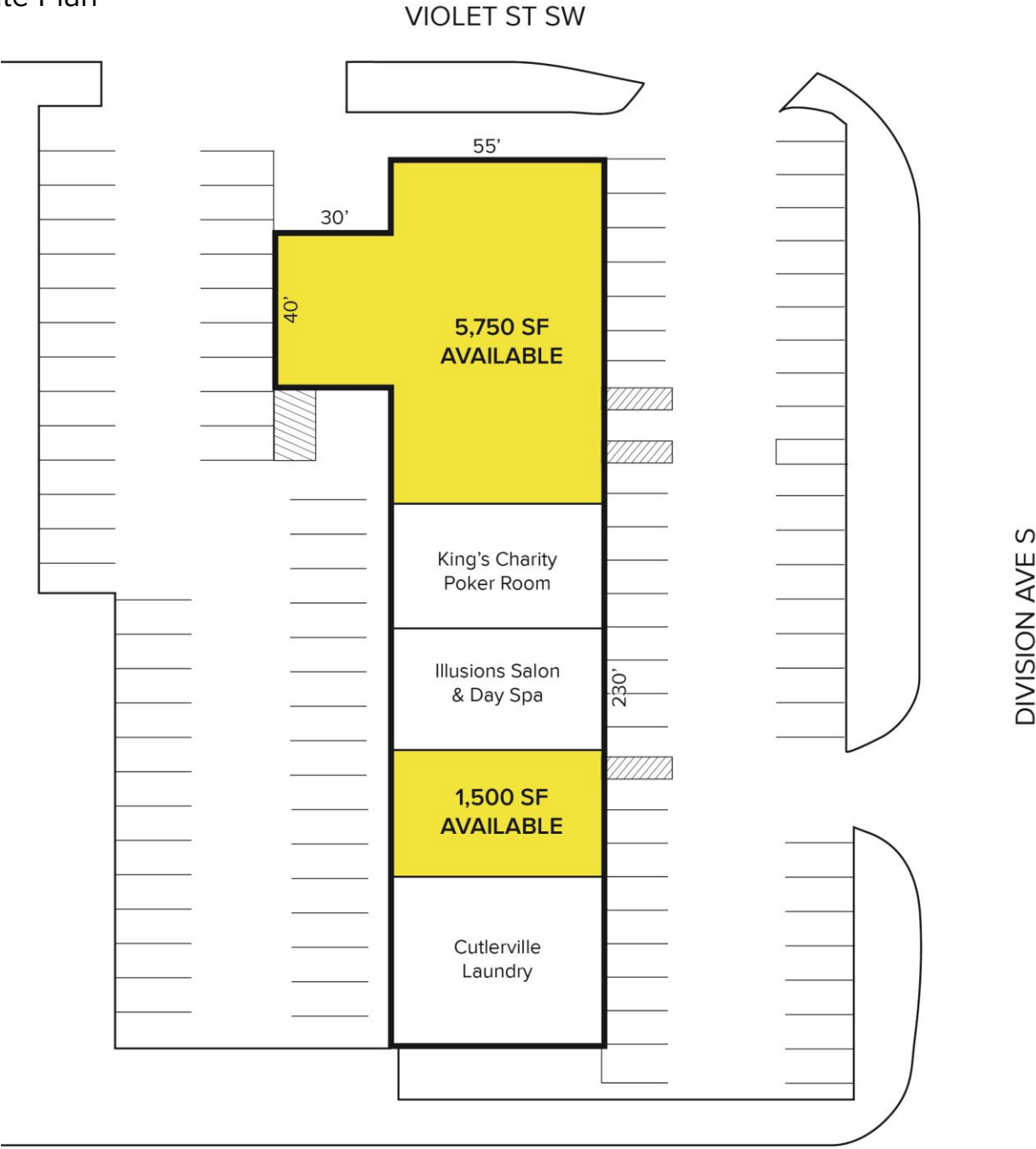
JOE RIZQALLAH
(616) 822 6310
jrizzqallah@signatureassociates.com

SIGNATURE ASSOCIATES
1188 East Paris Ave SE, Suite 220
Grand Rapids, MI 49546
www.signatureassociateswm.com

6209-6237 Division Avenue S – Grand Rapids, MI
Retail for Lease

1,500 – 5,750
Square Feet
AVAILABLE

Site Plan



CAMELOT BLVD SW

AVAILABILITY			
UNIT	TOTAL SF	RATE PSF	MONTHLY
6209	5,750	\$12.00 NNN	\$5,750
6233	1,500	\$20.00 NNN	\$2,500

For more information, please contact:
JOE RIZQALLAH
(616) 822 6310
jrizqallah@signatureassociates.com

SIGNATURE ASSOCIATES
1188 East Paris Ave SE, Suite 220
Grand Rapids, MI 49546
www.signatureassociateswm.com

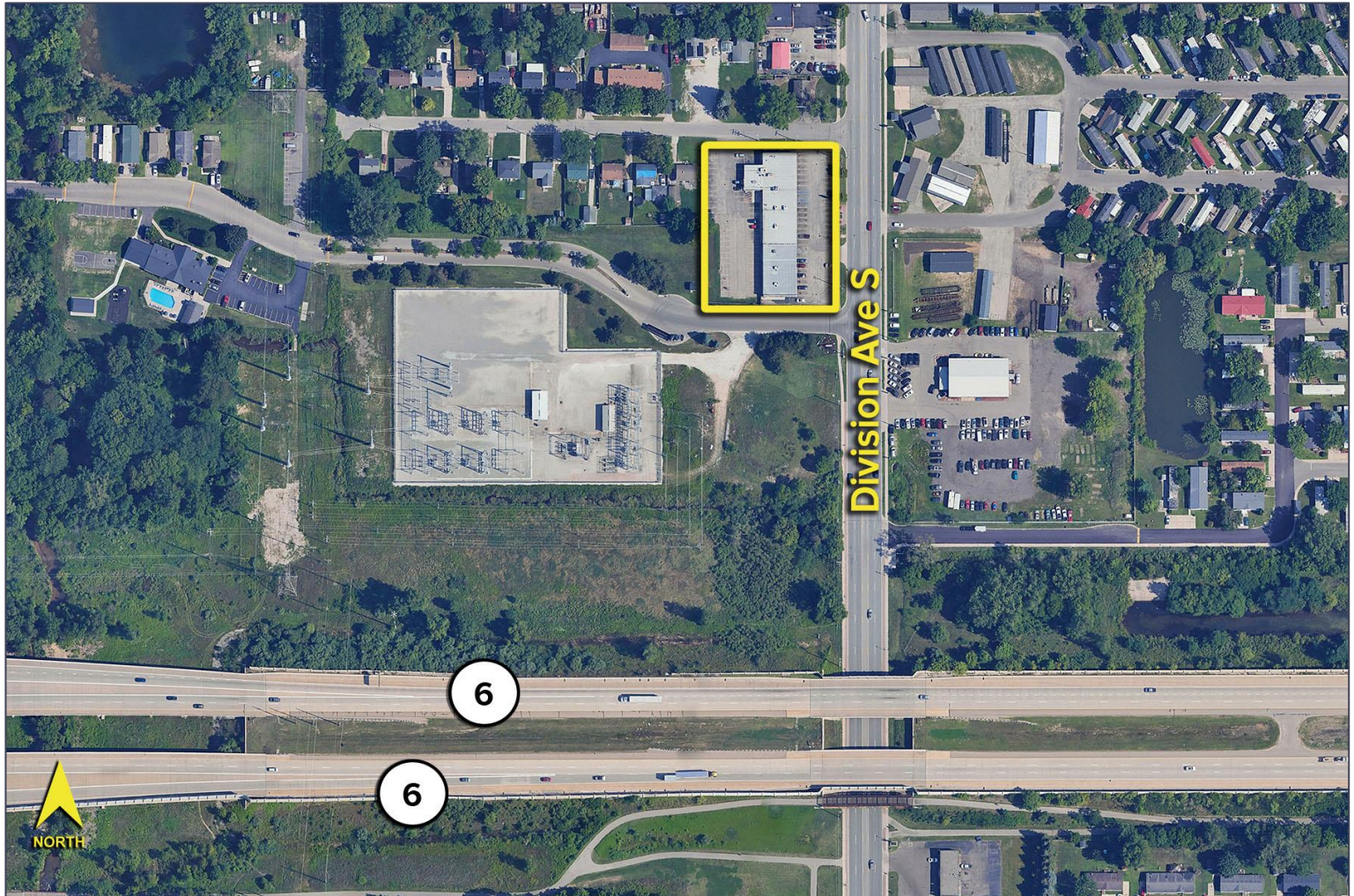
Information is subject to verification and no liability for errors or omissions is assumed. Price is subject to change and listing withdrawal.

6209-6237 Division Avenue S – Grand Rapids, MI

Retail for Lease

1,500 – 5,750
Square Feet
AVAILABLE

Aerial



DEMOGRAPHICS

	POPULATION	MED. HH INCOME
1 MILE	12,563	\$61,855
3 MILE	74,362	\$78,981
5 MILE	176,098	\$81,155

TRAFFIC COUNTS (TWO-WAY)

17,065	Division Ave S south of 60 th St SE
21,300	Division Ave S north of 60 th St SE
11,778	60 th St SE west of Division Ave S
19,893	Division Ave S south of 54 th St SW

For more information, please contact:

JOE RIZQALLAH
(616) 822 6310
jrizzqallah@signatureassociates.com

SIGNATURE ASSOCIATES
1188 East Paris Ave SE, Suite 220
Grand Rapids, MI 49546
www.signatureassociateswm.com

Information is subject to verification and no liability for errors or omissions is assumed. Price is subject to change and listing withdrawal.