



1.38 ACRES

1.44 ACRES

2.8 ACRES
TOTAL

FOR SALE

2063 N Main Street
Summerville, SC 29486

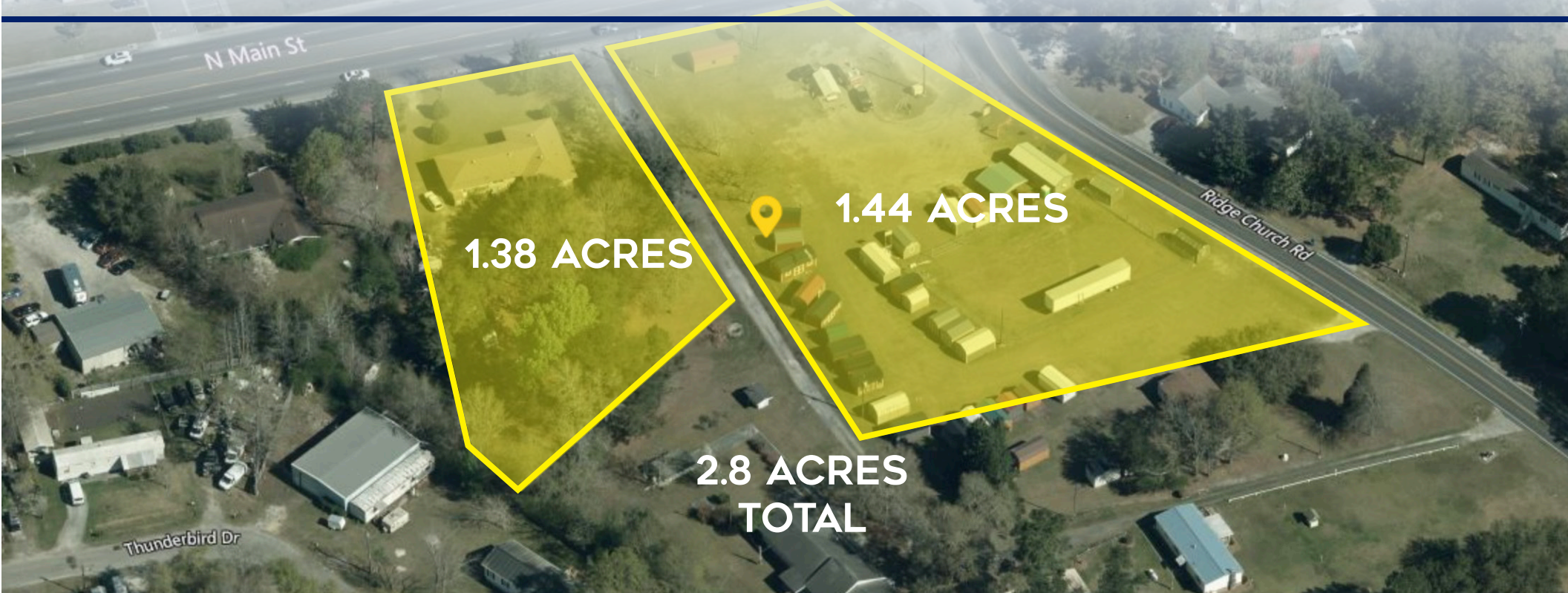


COLDWELL BANKER
COMMERCIAL
ATLANTIC

Brent Case, CCIM
(C) 843.270.4192
bcase@cbcatlantic.com

Julia Donovan, CCIM, CIPS
(C) 843.870.5930
jdonovan@cbcatlantic.com

EXECUTIVE SUMMARY



OFFERING SUMMARY

PROPERTY OVERVIEW

Sale Price: \$2,500,000

Total Available: 2.80 Acres

Tax ID: 2221404046

Municipality: Berkeley

Zoning: GC - General Commercial

2.80 Acres For Sale to be developed.
41,900 AADT 2022 (SCDOT).

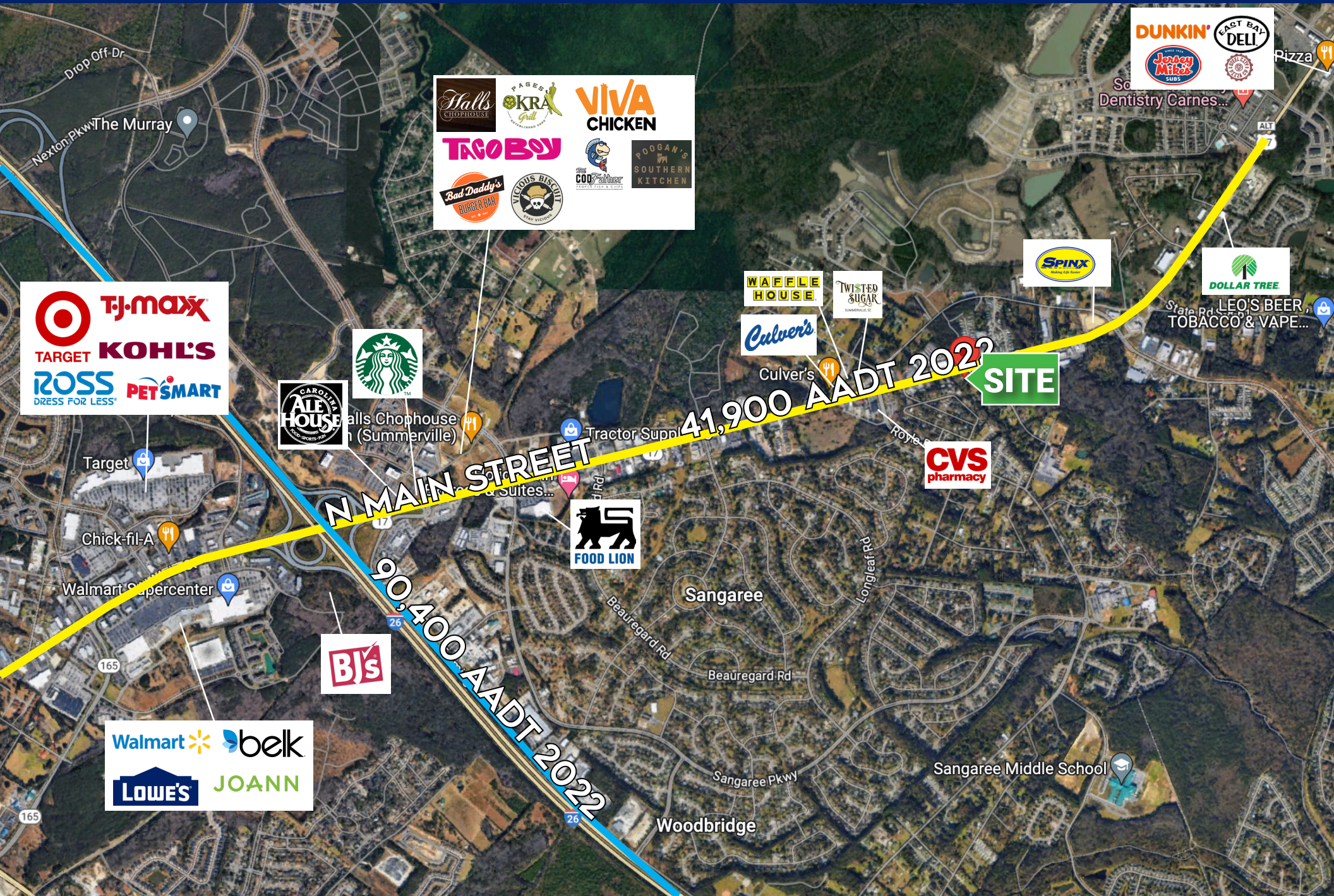
AREA MAP



DEVELOPMENT



AREA RETAILERS

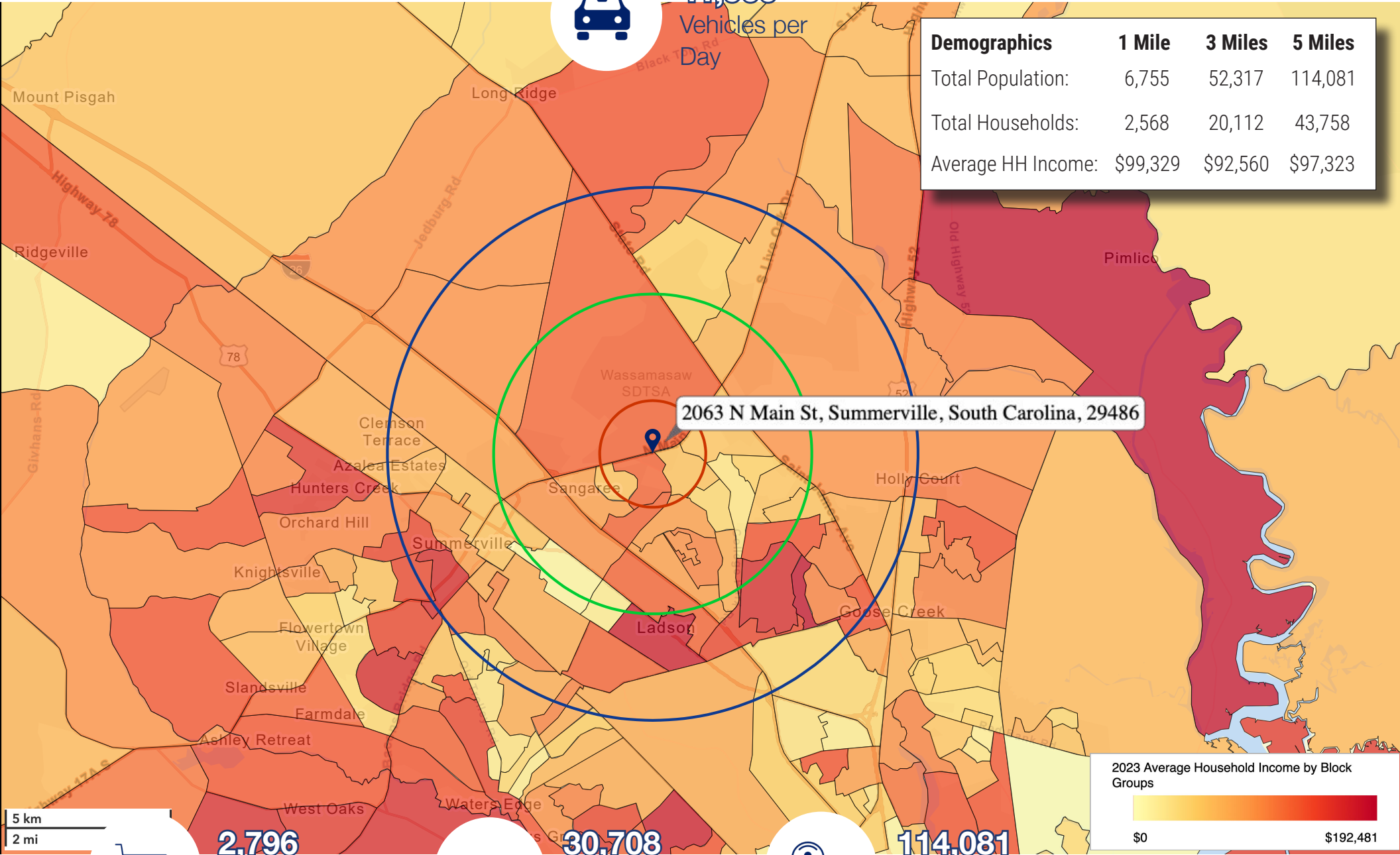


DEMOGRAPHICS

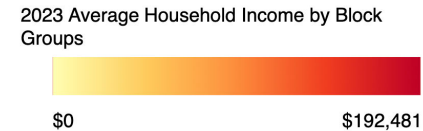


41,900
Vehicles per Day

Demographics	1 Mile	3 Miles	5 Miles
Total Population:	6,755	52,317	114,081
Total Households:	2,568	20,112	43,758
Average HH Income:	\$99,329	\$92,560	\$97,323



2063 N Main St, Summerville, South Carolina, 29486



5 km
2 mi



2,796
Businesses
within 5 Miles



30,708
Employees
within 5 Miles



114,081
Population
within 5 Miles

All demographics based on Esri forecasts for 2023
SCDOT AADT 2022

Brent Case, CCIM
(C) 843.270.4192
bcase@cbsatlantic.com

Julia Donovan, CCIM, CIPS
(C) 843.870.5930
jdonovan@cbsatlantic.com

1.38 ACRES

1.44 ACRES

2.8 ACRES
TOTAL



**COLDWELL BANKER
COMMERCIAL**
ATLANTIC

3506 W Montague Ave Suite 200
North Charleston, SC 29418
843.744.9877
cbsatlantic.com | cbcretailatlantic.com

This information has been obtained from sources believed reliable but has not been verified for accuracy or completeness. Coldwell Banker Commercial Atlantic makes no guarantee, representation or warranty and accepts no responsibility or liability as to the accuracy, completeness, or reliability of the information contained herein. You should conduct a careful, independent investigation of the property and verify all information. Any reliance on this information is solely at your own risk.

The information contained herein should be considered confidential and remains the sole property of Coldwell Banker Commercial Atlantic at all times. Although every effort has been made to ensure accuracy, no liability will be accepted for any errors or omissions. Disclosure of any information contained herein is prohibited except with the express written permission of Coldwell Banker Commercial Atlantic.