

# STONETERRA MEDICAL PLAZA

150 E. Sonterra Blvd. | San Antonio, Texas 78258

---

For Lease | Medical Office Space



Owned and Managed By







## Property Summary

Stoneterra Medical Plaza is a 57,211 square foot, three story Class A medical office building in the heart of the Stone Oak medical submarket.

This multi-tenant property was built in 2006 and is conveniently located on the southeast corner of Stone Oak Park-way and Sonterra Boulevard.

### BUILDING SIZE

57,211 RSF

### AVAILABILITIES

Suite 200A 2,123 RSF

Suite 200B 3,007 RSF

Suite 302 923 RSF

### PARKING

Ample surface parking  
5.00/1,000 RSF





# Property Highlights



Conveniently located in the Far North Central,  
Stone Oak



Move-in ready second generation spaces available



Plains Capital Bank on-site



Multi-specialty tenants with cross-referral opportunities



Generous tenant improvement allowance opportunities



STONETERRA MEDICAL PLAZA



# STONETERRA MEDICAL PLAZA

150 E. Sonterra Blvd. | San Antonio, Texas 78258

## LEVEL 2

SPEC SUITE  
NOW AVAILABLE

**Suite 200A**  
2,123 RSF



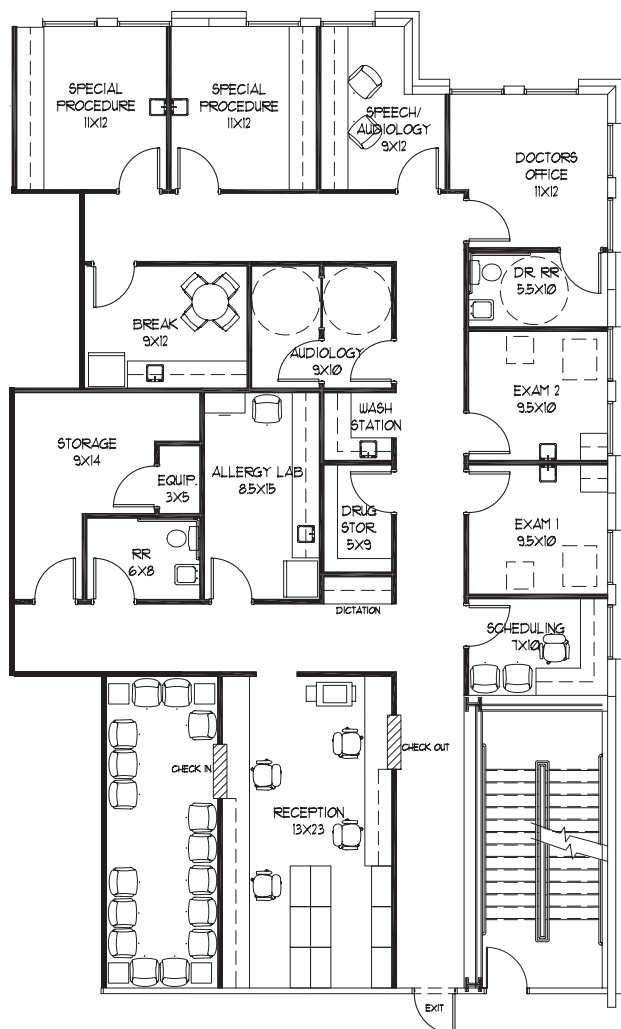
# STONETERRA MEDICAL PLAZA

150 E. Sonterra Blvd. | San Antonio, Texas 78258

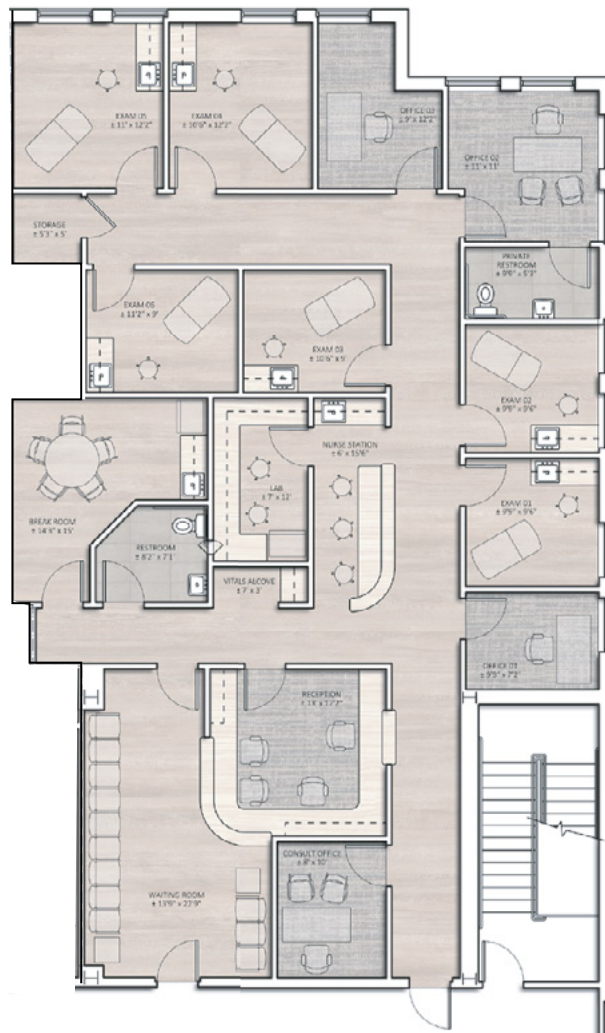
## LEVEL 2

### Suite 200B 3,007 RSF

#### CURRENT FLOORPLAN



#### PROPOSED FLOORPLAN



# STONETERRA MEDICAL PLAZA

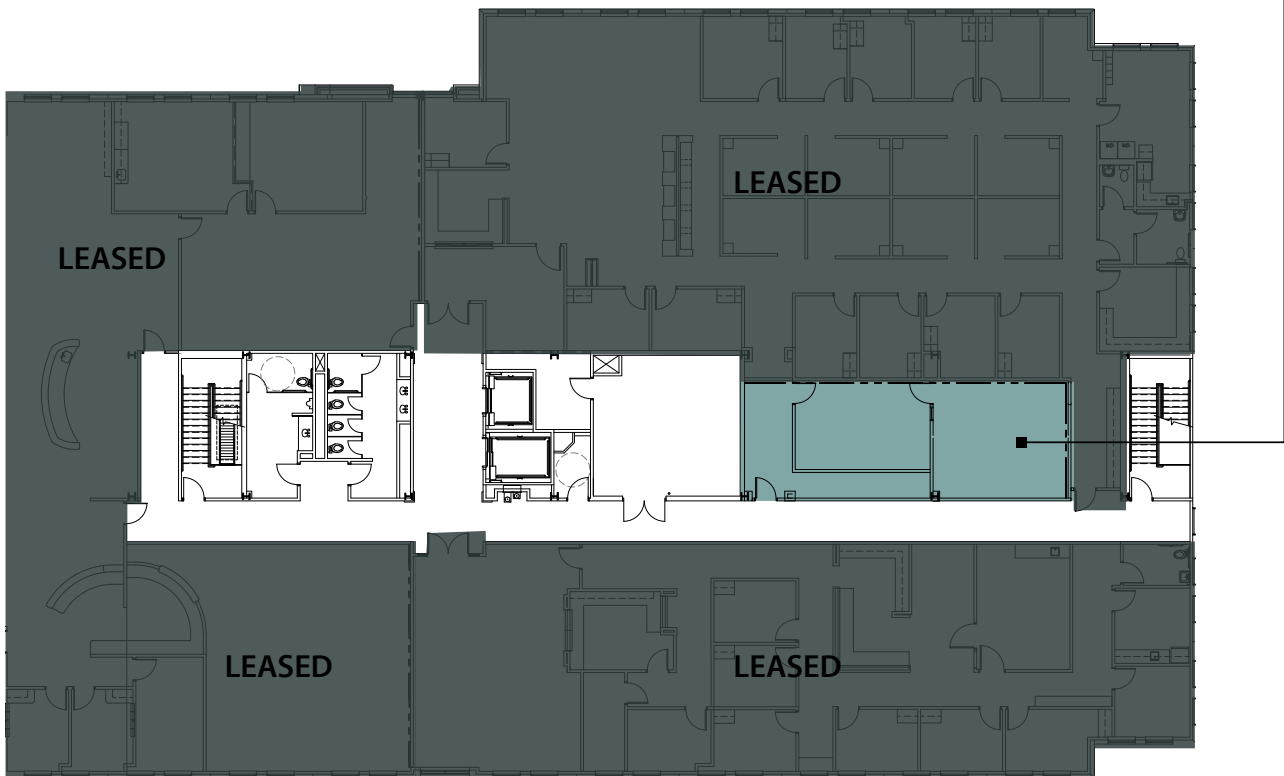
150 E. Sonterra Blvd. | San Antonio, Texas 78258

STONETERRA MEDICAL PLAZA

## LEVEL 3

Suite 302  
923 RSF

Suite 302  
923 RSF

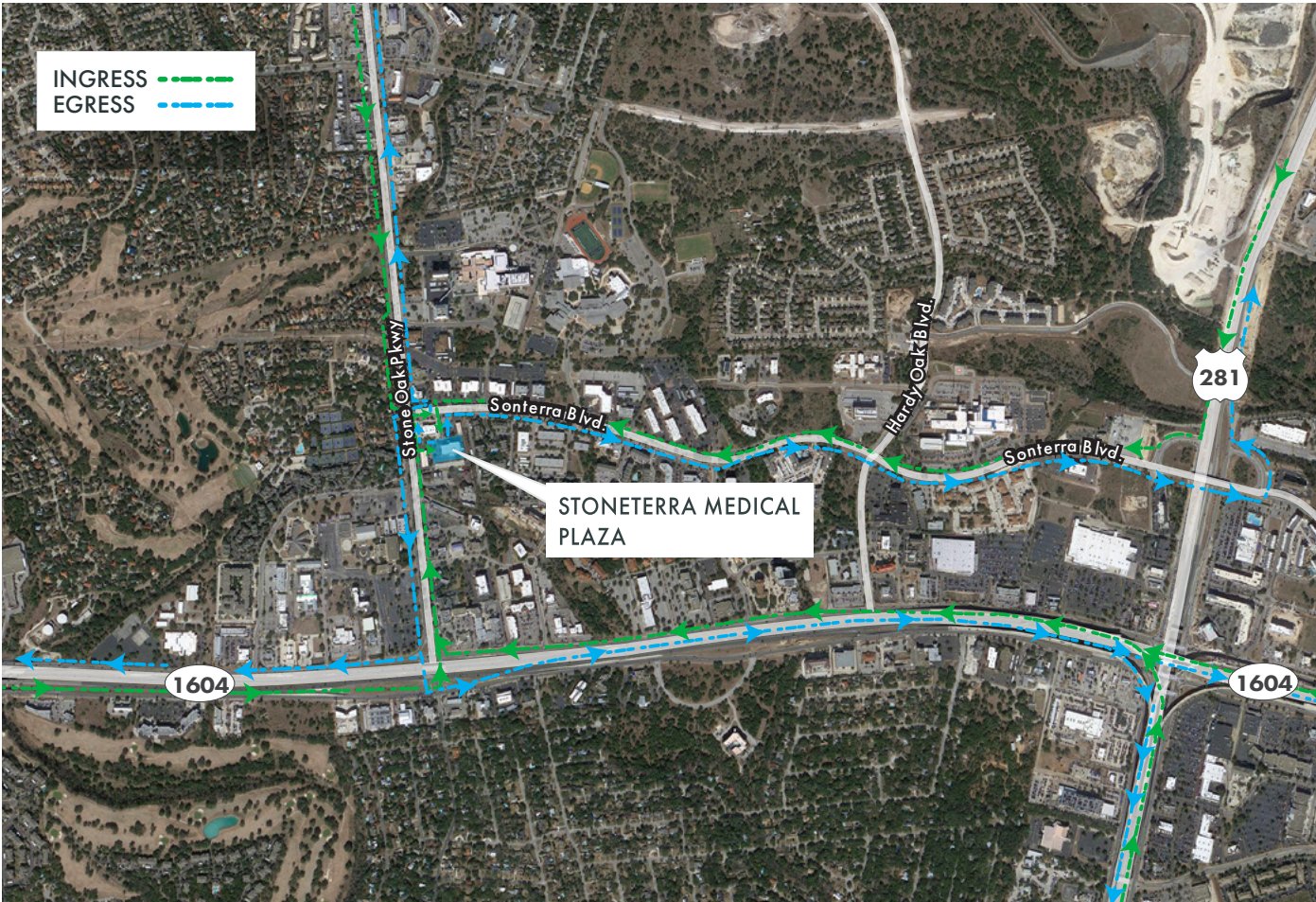


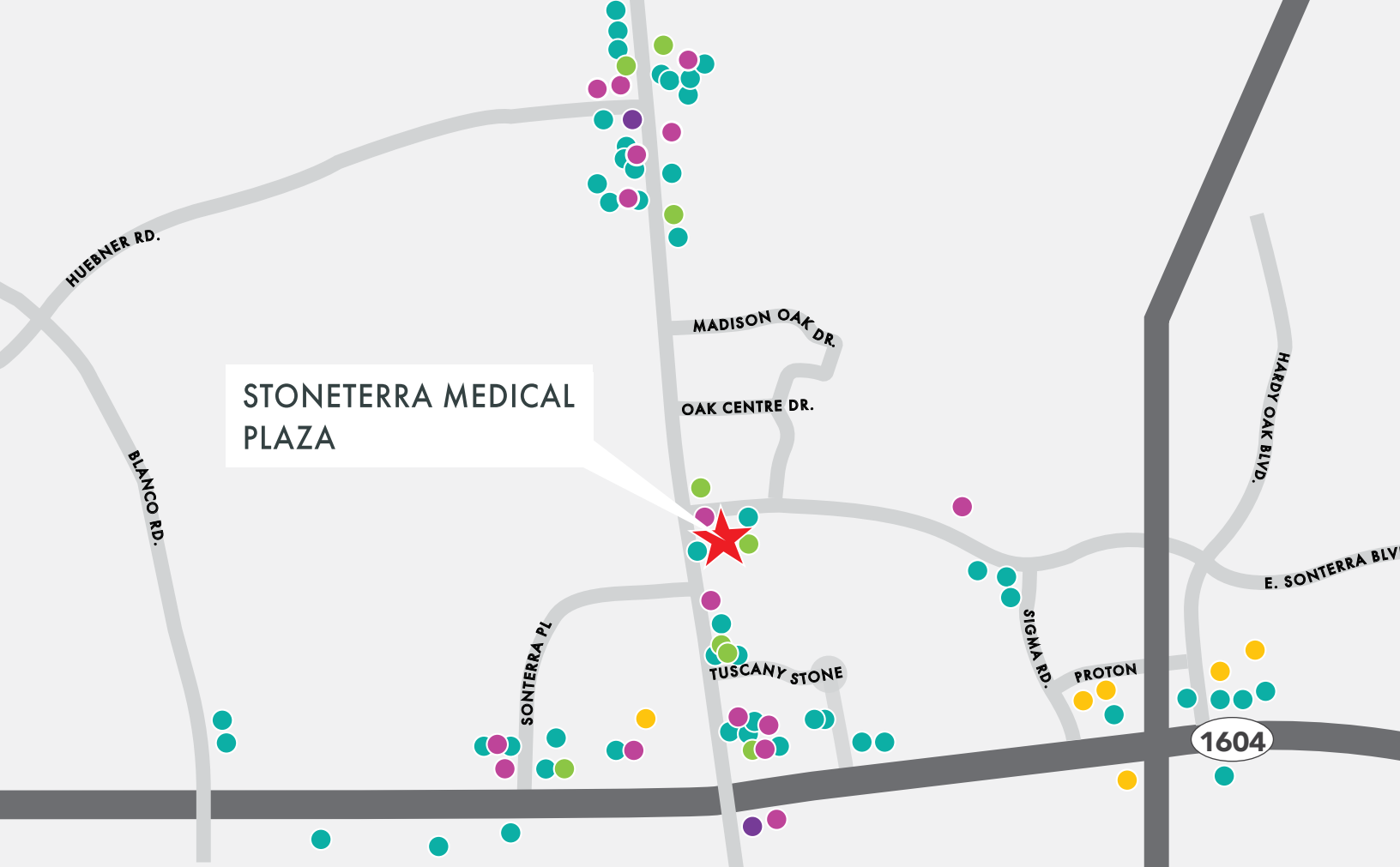


# STONETERRA MEDICAL PLAZA

150 E. Sonterra Blvd. | San Antonio, Texas 78258

## INGRESS/EGRESS





(1 Mile Radius)

## RESTAURANTS

Milano Italian Grill IHOP Taco Cabana India Taj Palace Jersey Mike's Subs Le Peep Y Bubble Don Adolfo's Bar & Grill Sushi Seven Vida Mia Wendy's Sonic Drive-In Raising Cane's Chicken Finger's Toroko Sushi Luciano Ristorante Italiano Taipei Project Pollo Starbucks First Watch Salata Smashin Crab Toro Kitchen + Bar Cuishe Cocina Mexicana Kirby Steakhouse Frida Mexican Restaurant & Bar Stout House Stone Oak Tiff's Treats Mellow Mushroom Gorditas Doña Tota Embers Wood Fire Kitchen & Tap Full Belly Café + Bar Chuma Gaucha Brazilia Steakhouse Jerusalem Grill El Mirasol Chick-Fil-A Luby's Costa Pacifica Eggspectation Krispy Kreme Jason's Deli House Tavern + Tap The Happy Monk

## SHOPPING

Walgreens	Groceries	Amazing Lash Studio
Swiftwater Car Wash	Moses Jewelers	uBreakiFix
Sherwin-Williams Paint Store	MD Uniforms	Bella Bride Boutique
Slater White Cleaners	DanzGear Dance & Fitness	Indoor & Outdoor Lighting Shop
CVS	Billiard Factory	Stone Oak Jewelers
Shahi IndoPak	Trader Joe's	Take 5 Oil Change

JLL disclaimer (universal): Although information has been obtained from sources deemed reliable, neither Owner nor JLL makes any guarantees, warranties or representations, express or implied, as to the completeness or accuracy as to the information contained herein. Any projections, opinions, assumptions or estimates used are for example only. There may be differences between projected and actual results, and those differences may be material. The Property may be withdrawn without notice. Neither Owner nor JLL accepts any liability for any loss or damage suffered by any party resulting from reliance on this information. If the recipient of this information has signed a confidentiality agreement regarding this matter, this information is subject to the terms of that agreement. ©2025 Jones Lang LaSalle IP, Inc. All rights reserved.

## HOTELS

Homewood Suites  
Drury Inn & Suites  
Drury Plaza Hotel  
Residence Inn  
La Quinta Inn & Suites  
Staybridge Suites

## GAS

Chevron  
Valero  
Circle K

## NEARBY/AMENITIES

## BANKS

Falcon International Bank  
Wells Fargo Bank  
Amegy Bank  
Jefferson Bank Stone Oak  
Plains Capital Bank  
The Bank of San Antonio  
Frost Bank  
IBC Bank  
Broadway Bank  
Lone Star National Bank

For More Information, Contact:

**Lee N. McKenna, MHA**

210-293-6842 | [lee.mckenna@jll.com](mailto:lee.mckenna@jll.com)

**Allie Sledge**

210-293-6843 | [allie.sledge@jll.com](mailto:allie.sledge@jll.com)



**Well  
tower**