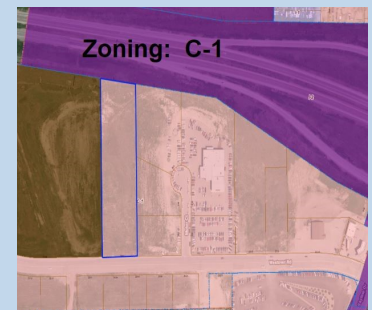


\$800,000



2600 Westover Road | GILLETTE | WY | 82718

Very nice Commercial Lot and a prime location!!! Backs along I-90 and is also just off Highway 50 (aka Skyline Drive). Fantastic visibility with 3.45 acres. Zoning is C-1. Great site to place your business and future development!!!



- 3.45 Acres
- Area: Westover
- Zoning: C-1



Ryan Conklin - Broker

RE/MAX Professionals

YOUR REAL ESTATE CONSULTANT

907 E. Boxelder Rd.
Gillette, Wyoming
82718

Phone: 307-682-6622
Fax: 307-686-7554
E mail: rconklin@vcn.com

