

# WILTON PARK III

4909 Dickens Road

**BROKER BONUS: \$2.00/SF ON DEALS CLOSED BY DEC. 31**

- Approx. 16,000 SF new two-story Class A office building located in Wilton Park
- First floor has approx. 7,829 SF of first-generation office space available
- Second floor is fully leased



## Available Now

SUITE 101	1,454 SF
SUITE 102	2,405 SF
SUITE 103	1,807 SF
SUITE 104	2,163 SF

- 24-hour secure building access
- Ample parking
- On-site landlord
- Directory signage – park entrance, building interior & suite

Situated at the intersection of Staples Mill & Dickens Road, Wilton Park offers a prime location in a quiet setting with attractive, well maintained landscaping. Adjacent to the I-64/Staples Mill Rd interchange and just a short drive from I-95, Wilton Park is convenient to all areas of the Richmond MSA.

**Built:** 2018  
**Gross SF:** 16,000  
**Zoning:** O-2  
**Construction:** Brick & Glass

## CONTACT

### Doug Mallory

**Office:** (804) 237-1365  
**Mobile:** (804) 363-5072  
**Email:** [doug@thewiltonco.com](mailto:doug@thewiltonco.com)

### Chris Francoise

**Office:** (804) 237-1355  
**Mobile:** (804) 370-1431  
**Email:** [chris@thewiltonco.com](mailto:chris@thewiltonco.com)

### Hank Miller

**Office:** (804) 237-1385  
**Mobile:** (804) 512-2041  
**Email:** [hank@thewiltonco.com](mailto:hank@thewiltonco.com)

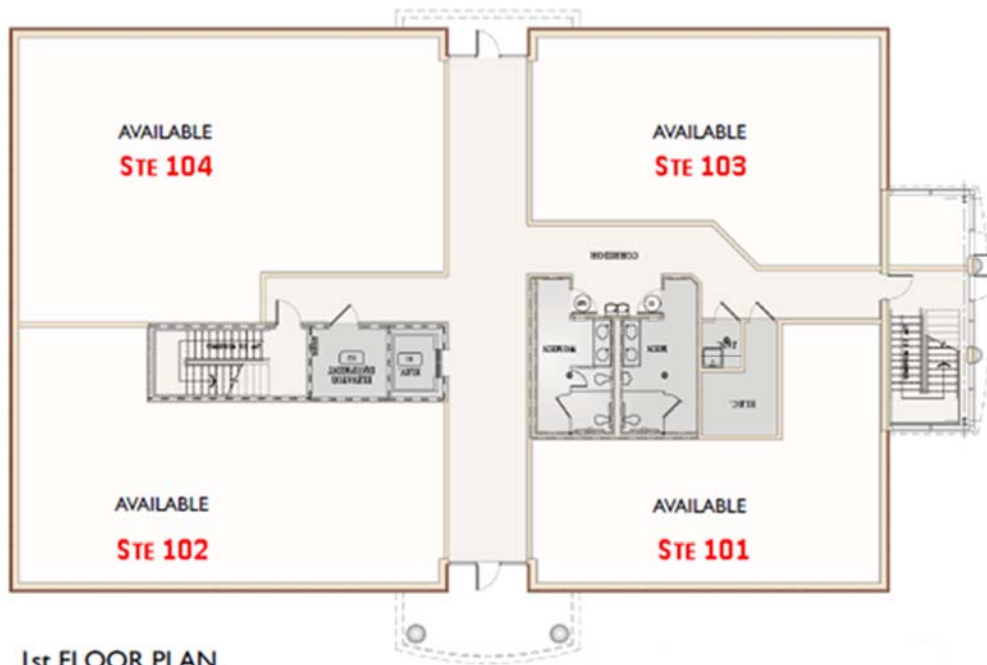
### Charlie Parrish

**Office:** (804) 237-1383  
**Mobile:** (757) 870-9818  
**Email:** [charlie@thewiltonco.com](mailto:charlie@thewiltonco.com)

### Tim Hightower

**Office:** (804) 237-1354  
**Email:** [tim@thewiltonco.com](mailto:tim@thewiltonco.com)

**1,454 SF to 4,568 SF Available!**



1st FLOOR PLAN

(Note: 2nd Floor is fully occupied.)

