

SPACE FOR LEASE

OFFICE ★ MEDICAL ★ RETAIL

1572 Wilmington Pike, West Chester, PA 19382



3,200 SF Available

- Total Building \pm 31,400 SF
- Abundant Parking
- On-Site Ownership
- Highly Visible and Accessible
- Zoned Business (B), Chadds Ford Twp.
- Easy Access to 202 North & South
- Traffic Count \pm 34,000 VPD
- Affluent Surrounding Community


FIRST LIBERTY PARTNERS

www.firstlibertypartners.com

Information concerning this offering is from sources deemed reliable, but no warranty is made as to the accuracy thereof and is submitted subject to errors, omissions, change of prices or other conditions, prior sale or lease or withdrawal without notice.

TURNKEY MEDICAL SUITE



- ± 3,200 SF
- Seven Exam Rooms
- Generous Waiting/Reception Area
- Three ADA Restrooms
- Break Room
- Private Office



LEASE RATE \$25/sf + Utilities



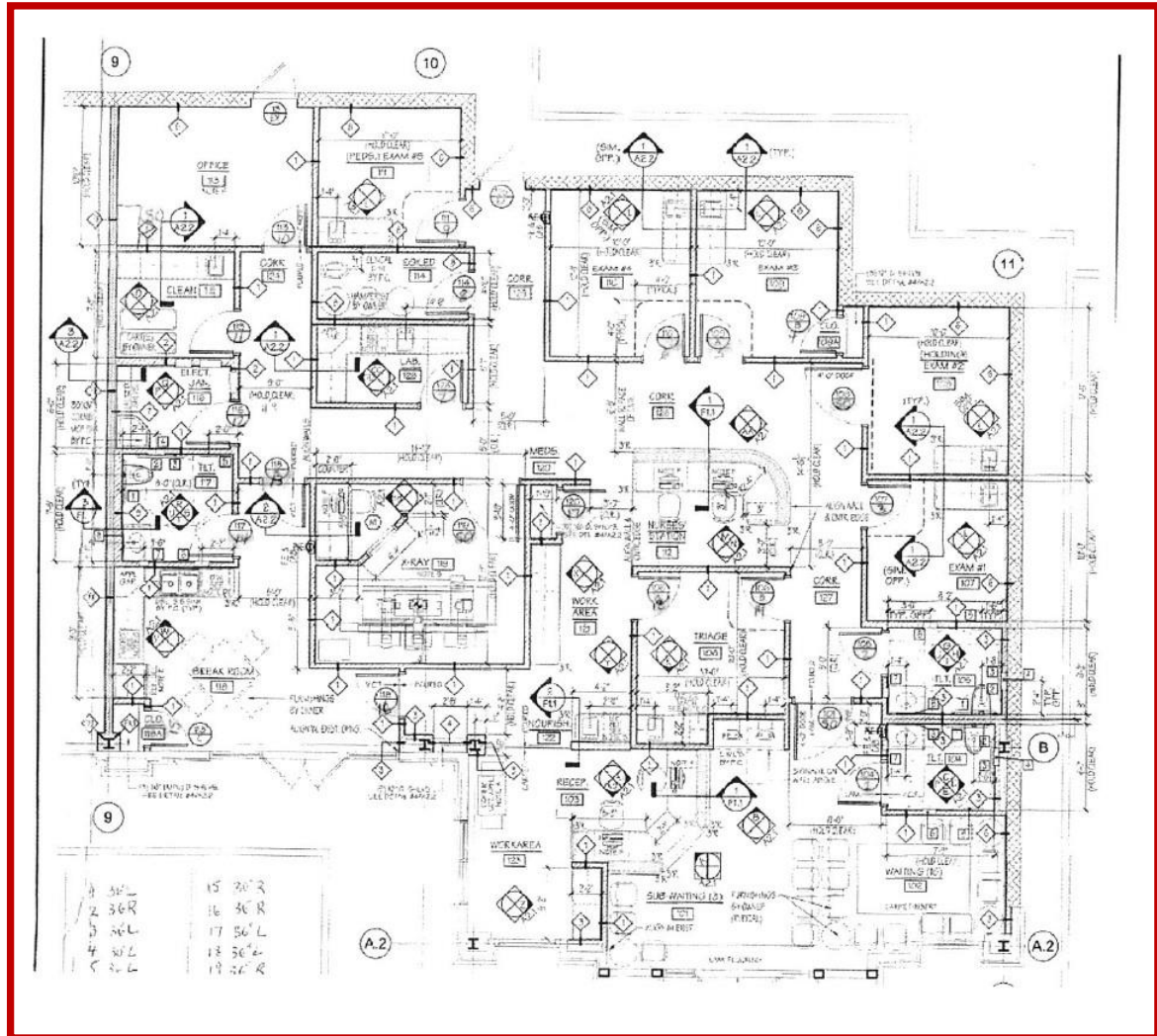
www.firstlibertypartners.com

Information concerning this offering is from sources deemed reliable, but no warranty is made as to the accuracy thereof and is submitted subject to errors, omissions, change of prices or other conditions, prior sale or lease or withdrawal without notice.

OFFICE ★ MEDICAL ★ RETAIL

1572 Wilmington Pike, West Chester, PA 19382

TURNKEY MEDICAL SUITE



FIRST LIBERTY PARTNERS

www.firstlibertypartners.com

Information concerning this offering is from sources deemed reliable, but no warranty is made as to the accuracy thereof and is submitted subject to errors, omissions, change of prices or other conditions, prior sale or lease or withdrawal without notice.

OFFICE ★ MEDICAL ★ RETAIL

1572 Wilmington Pike, West Chester, PA 19382



Population

	2 mile	5 mile	10 mile
2010 Population	10,669	73,372	439,433
2021 Population	10,958	75,188	451,658
2026 Population Projection	11,080	76,040	456,566

Income

	2 mile	5 mile	10 mile
Avg Household Income	\$168,722	\$157,087	\$120,476
Median Household Income	\$137,461	\$124,447	\$89,883



www.firstlibertypartners.com

Information concerning this offering is from sources deemed reliable, but no warranty is made as to the accuracy thereof and is submitted subject to errors, omissions, change of prices or other conditions, prior sale or lease or withdrawal without notice.

OFFICE ★ MEDICAL ★ RETAIL

1572 Wilmington Pike, West Chester, PA 19382

Easy Access To/From 202 North



For More Information Or To Schedule
A Tour Please Contact:

Frank England

(610) 594-3900

fenglund@firstlibertypartners.com



FIRST LIBERTY PARTNERS

www.firstlibertypartners.com

Information concerning this offering is from sources deemed reliable, but no warranty is made as to the accuracy thereof and is submitted subject to errors, omissions, change of prices or other conditions, prior sale or lease or withdrawal without notice.