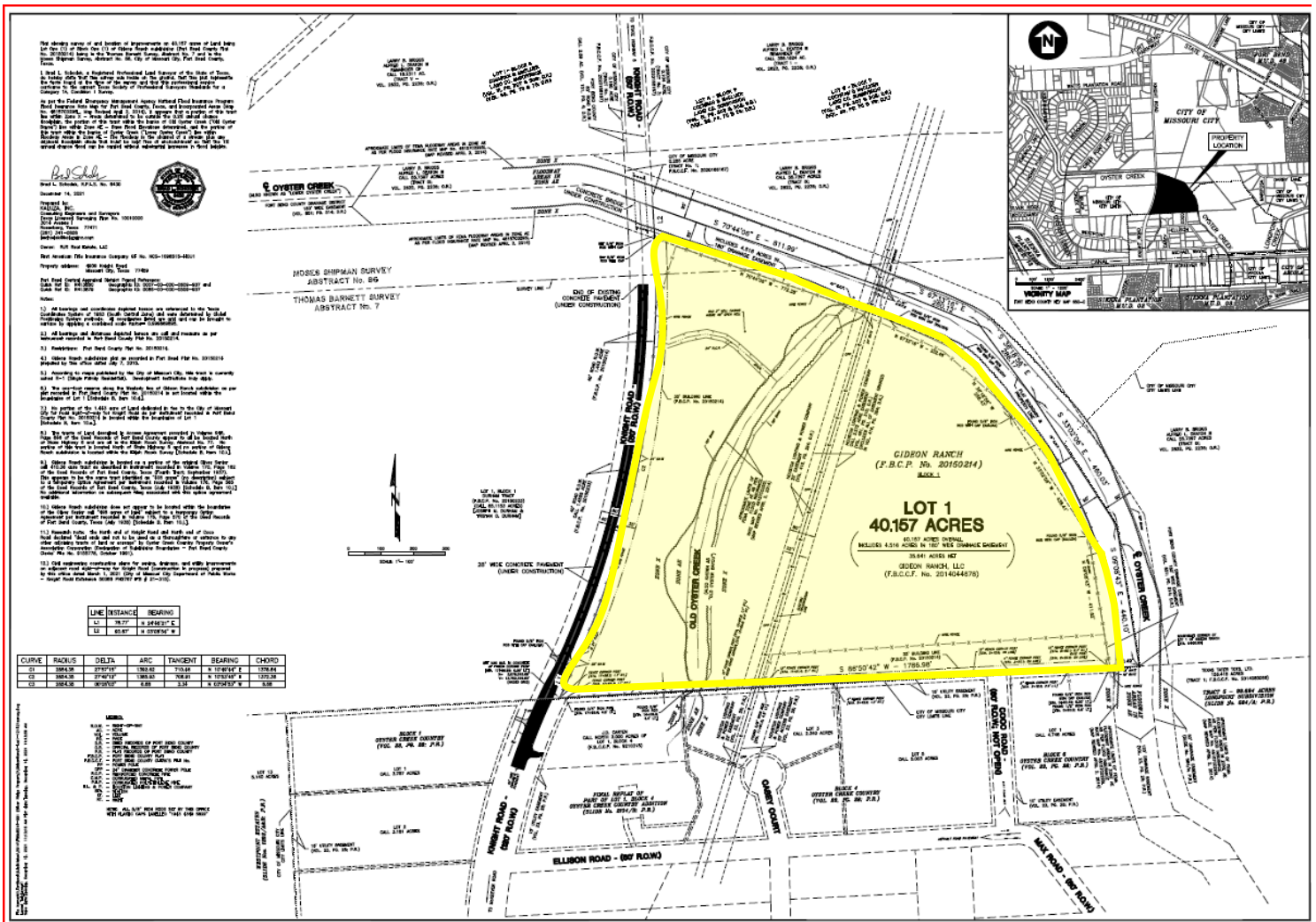


EXHIBIT "B"

SURVEY

TO THE COMMERCIAL REAL ESTATE LISTING AGREEMENT – EXCLUSIVE RIGHT TO SELL WITH
A LEGAL DESCRIPTION OF: 0007 T BARNETT, ACRES 34.4563, (PT) LOT 1, BLOCK 1, GIDEON
RANCH AND 0086 M SHIPMAN, ACRES 5.7007, (PT) LOT 1, BLOCK 1, GIDEON RANCH AND
OTHERWISE REFERRED TO AS "APPROXIMATELY 40.157 ACRES – KNIGHT ROAD.", SUBMARKET
OF MISSOURI CITY, TEXAS, FORT BEND, 77459 BY AND BETWEEN RJR REAL ESTATE, LLC
("SELLER") AND INDERMUEHLE & CO., INC. DBA ICO COMMERCIAL ("BROKER").



Initialed for Identification by Seller: _____, _____ and Broker: _____, _____