

Sheridan Business Park

747 Sheridan Blvd
Lakewood, CO 80214



Property Info:

- Space Type: Flex
- Complex Size: 55,663 (5 bldgs)
- Ceiling Height: 12' - 14'
- Parking Ratio: 2.6 per 1,000 sf
- Year Built: 1985

Property Highlights

- Highly Visible with Monument Signage on Sheridan Ave.
- Traffic Count: 71,800 cars per day
- Within Lakewood Enterprise Zone
- Each unit features storefront and drive-in door
- Full office HVAC and warehouse heat
- Individually metered for gas and electric
- Video surveillance
- New exterior building paint
- New directory signage

WC Johnson, LLC

747 Sheridan Blvd. #7D,
Lakewood, CO 80214
Office: (720) 350-4680

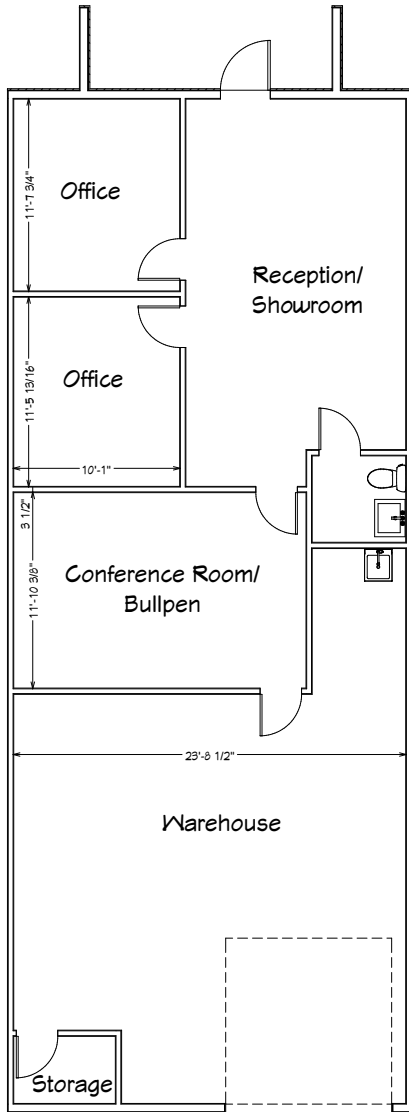
WC JOHNSON

INVESTMENT | DEVELOPMENT | MANAGEMENT

Office/Warehouse Space Available

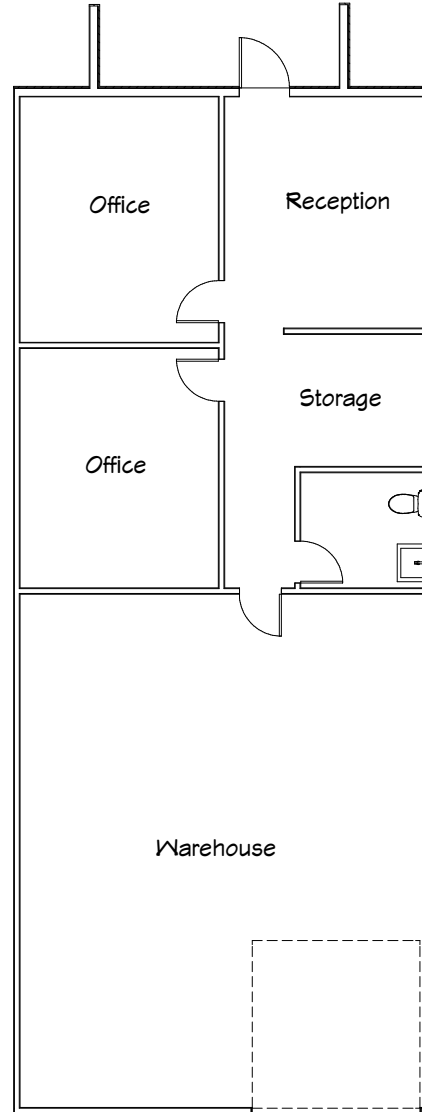
Unit 6A:

- ~ Size: 1,500 sf
- ~ Lease Rate: \$13.50/sf NNN
- ~ NNN Expenses: \$6.05/sf
- ~ Availability: 2 weeks from lease execution



Unit 7A:

- ~ Size: 1,500 sf
- ~ Lease Rate: \$13.00/sf NNN
- ~ NNN Expenses: \$6.05/sf
- ~ Availability: Now



WC JOHNSON
INVESTMENT | DEVELOPMENT | MANAGEMENT

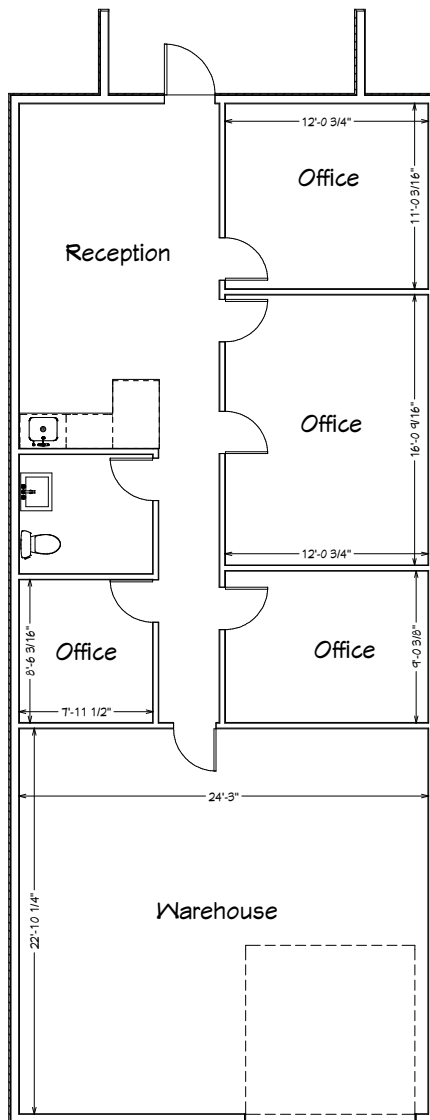
For More Information Contact:

Becky DeLorenzo
Cell: (720) 320-7688
Office: (720) 350-4680
Email: becky@wcjre.com

Office/Warehouse Space Available

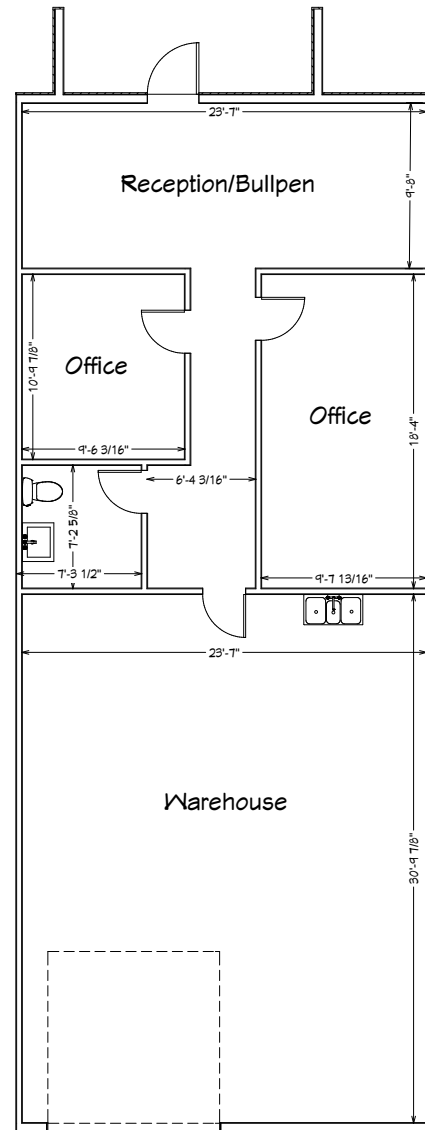
Unit 8B:

- ~ Size: 1,500 sf
- ~ Lease Rate: \$13.00/sf NNN
- ~ NNN Expenses: \$6.05/sf
- ~ Availability: Now



Unit 8E:

- ~ Size: 1,500 sf
- ~ Lease Rate: \$13.00/sf NNN
- ~ NNN Expenses: \$6.05/sf
- ~ Availability: Now



WC JOHNSON
 INVESTMENT | DEVELOPMENT | MANAGEMENT

For More Information Contact:

Becky DeLorenzo
 Cell: (720) 320-7688
 Office: (720) 350-4680
 Email: becky@wcjre.com