

Oxford Companies
734.665.6500
oxfordcompanies.com



Integrated
Real Estate
Services



Eisenhower Commerce Building

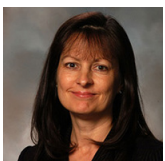
21,456 SF

1400-1490 Eisenhower Pl

\$15.00 SF/yr (NNN)

Ann Arbor, MI 48104

Available



Contact Karen O'Neil for
more information or to
schedule a tour.

Office: 734.665.6500
Cell: 734.323.4263
koneil@oxfordcompanies.com

Eisenhower Commerce Bldg 4
Suite 1490
Ann Arbor, MI 48104



Integrated
Real Estate
Services



OFFERING SUMMARY

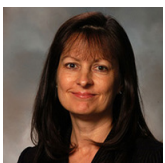
Lease Rate:	\$15.00 SF/yr (NNN)
Available SF:	21,456 SF
Year Built:	1986
Ceiling Height:	11'3"
Height to Deck:	13'4"
Overhead Door:	One, 10'
Zoning:	M-1
Submarket:	South Ann Arbor

PROPERTY OVERVIEW

The Eisenhower Commerce Center consists of five flex buildings in Ann Arbor's bustling Southside corridor--the hub of Ann Arbor's thriving research and technology industries. These premium industrial, lab, and R&D spaces are in the perfect location for businesses looking to expand their Ann Arbor office space footprints. ECC tenants enjoy convenient access to I-94 and proximity to other business parks, hotels, and downtown Ann Arbor. This location puts you in the heart of the action – great for networking and business travel. The buildings themselves boast an attractive brick exterior and ample parking, and are nestled in a peaceful, wooded setting surrounded by natural landscaping. On the inside you'll find a blank canvas that can be easily customized to your business needs.

PROPERTY HIGHLIGHTS

- Nestled in a peaceful, wooded setting
- Attractive brick exterior surrounded by natural landscaping
- Overhead doors and high ceilings
- Easy access to I-94 and US-23 and minutes from downtown Ann Arbor and U-M
- At the hub of the city's thriving research and technology industries
- Surrounded by other business parks and hotels
- Plenty of free parking adjacent to building
- Locally owned and professionally managed with 24/7 on-call emergency maintenance



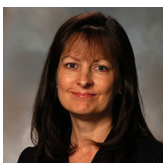
Contact Karen O'Neil for more information or to schedule a tour.

Office: 734.665.6500
Cell: 734.323.4263
koneil@oxfordcompanies.com

Eisenhower Commerce Bldg 4
Suite 1490
Ann Arbor, MI 48104



Integrated
Real Estate
Services



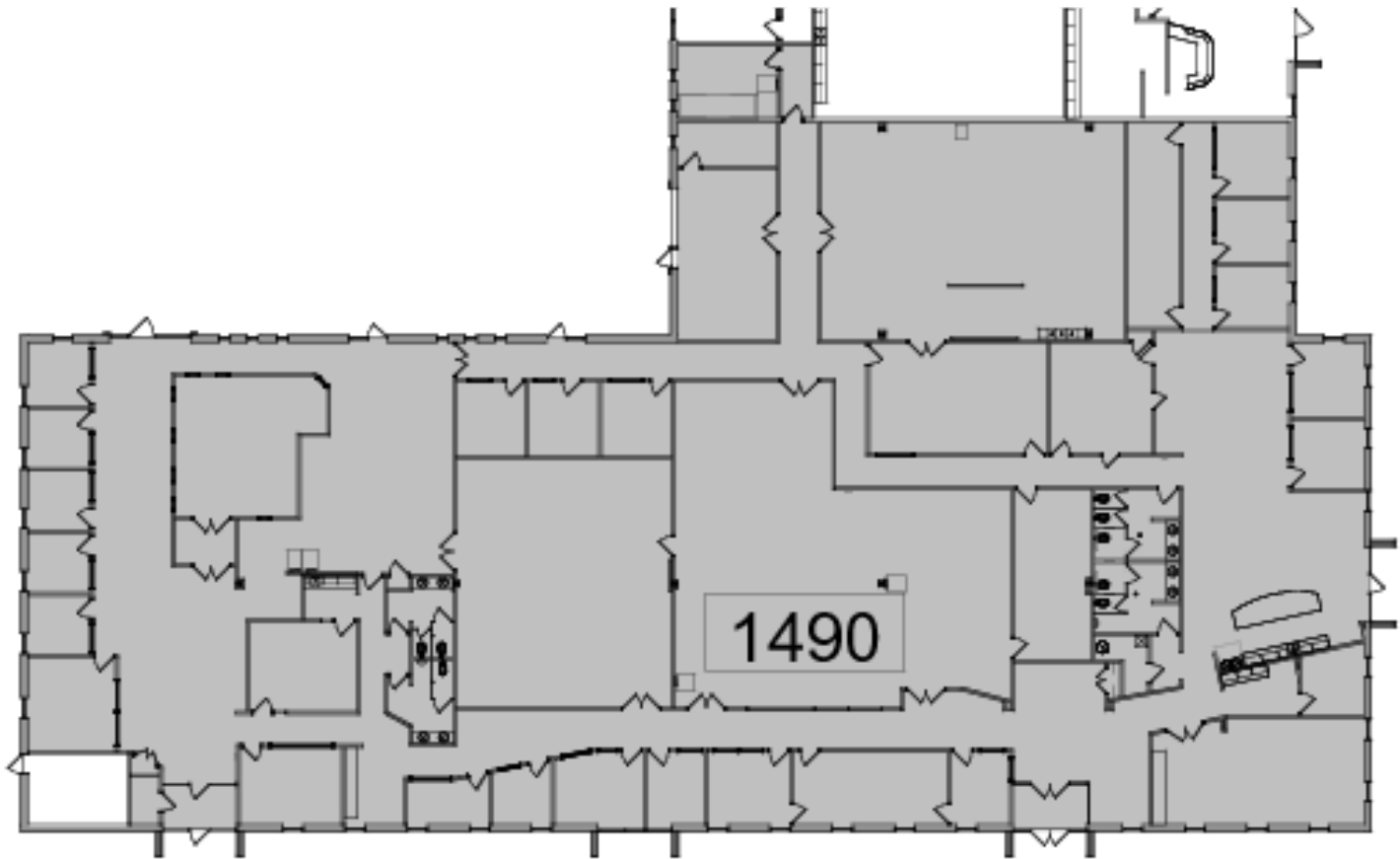
Contact Karen O'Neil for
more information or to
schedule a tour.

Office: 734.665.6500
Cell: 734.323.4263
koneil@oxfordcompanies.com

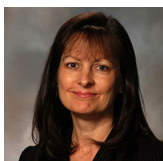
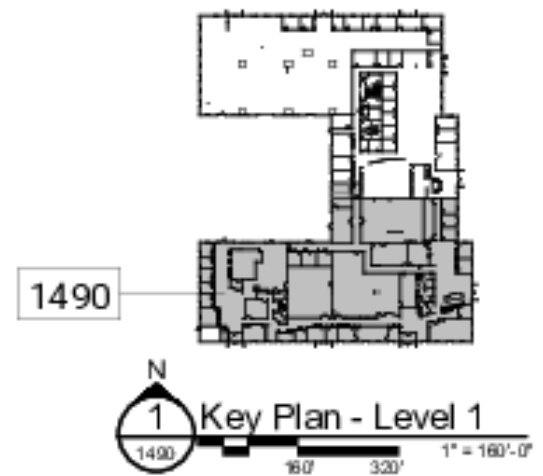
Eisenhower Commerce Bldg 4
Suite 1490
Ann Arbor, MI 48104



Integrated
Real Estate
Services



 N
2 Suite 1490 - Partial Level 1 Existing Floor Plan
1400 16' 32' 64' 1/32" = 1'-0"



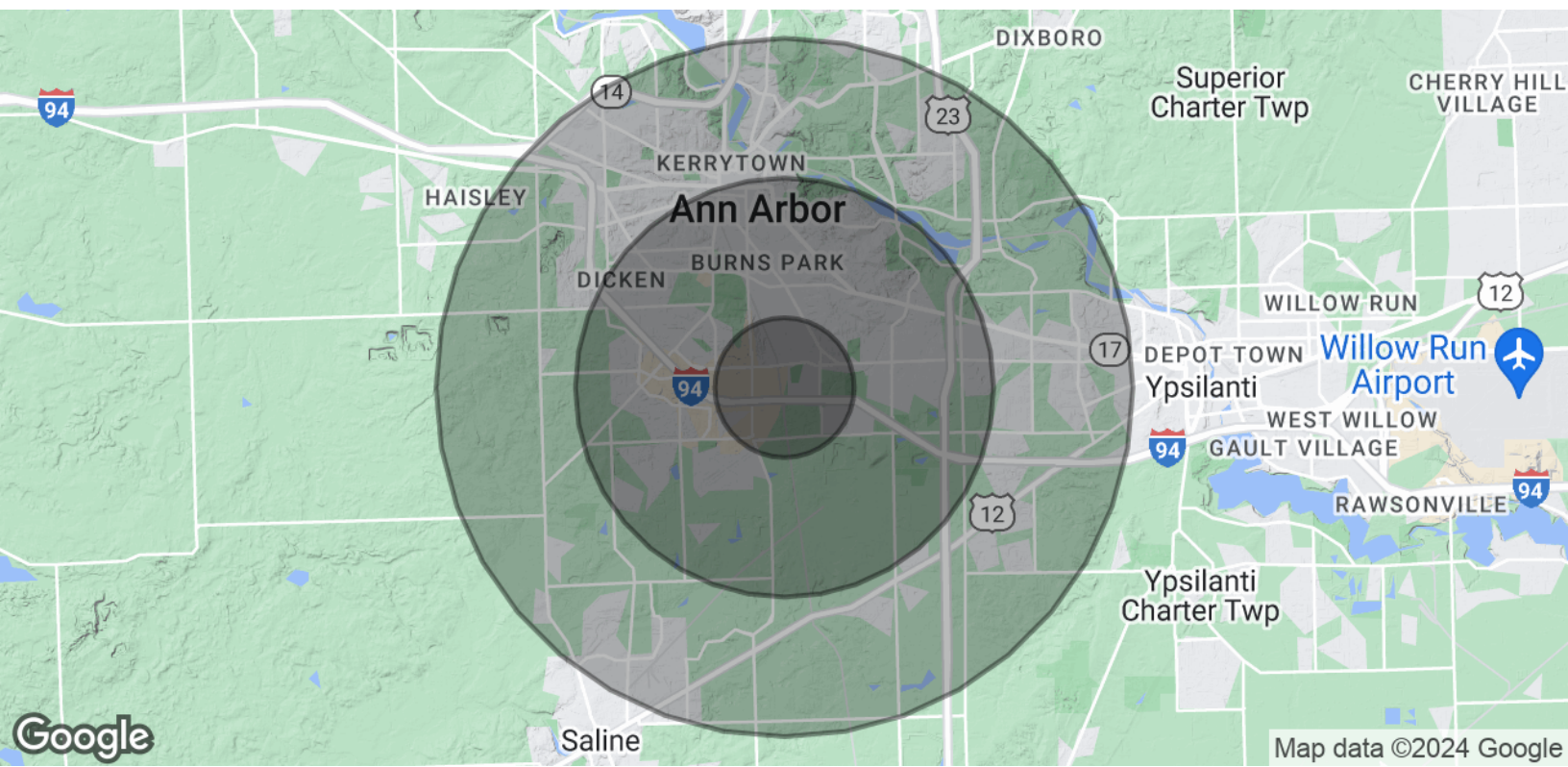
Contact Karen O'Neil for
more information or to
schedule a tour.

Office: 734.665.6500
Cell: 734.323.4263
koneil@oxfordcompanies.com

Eisenhower Commerce Bldg 4
 Suite 1490
 Ann Arbor, MI 48104

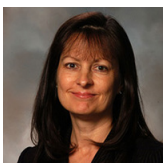


Integrated
 Real Estate
 Services



POPULATION	1 MILE	3 MILES	5 MILES
Total Population	9,861	85,866	189,520
Average Age	32.2	31.2	32.5
Average Age (Male)	32.3	31.1	32.2
Average Age (Female)	32.0	31.2	32.8
HOUSEHOLDS & INCOME	1 MILE	3 MILES	5 MILES
Total Households	4,563	32,928	74,237
# of Persons per HH	2.2	2.6	2.6
Average HH Income	\$57,812	\$77,243	\$78,029
Average House Value	\$152,862	\$343,737	\$316,575

* Demographic data derived from 2020 ACS - US Census



Contact Karen O'Neil for more information or to schedule a tour.

Office: 734.665.6500
 Cell: 734.323.4263
 koneil@oxfordcompanies.com