



Office | For Lease | 4,576 SF

Stand-Alone Building near I-94
Great space for gym, daycare or
autism center

7085 E Drive North
Battle Creek, MI 49014

Overview

Previously used as a church and a medical equipment distributor, this stand-alone building would be great for a gym, daycare or autism center. Wide open areas and individual offices, multiple restrooms. Circular covered entrance drive and grand interior entrance area. Attached garage for storage. Located on 2 acres, this site could easily accommodate exterior storage displays or outdoor play areas. Brick building just off I-94 and Beadle Lake Road.

Lease Price **\$9.00/SF NNN**
Tenant to verify zoning code will permit its use.

Maureen Daniel
269.384.8362 [direct]
269.330.9396 [mobile]
mdaniel@ccmichigan.com

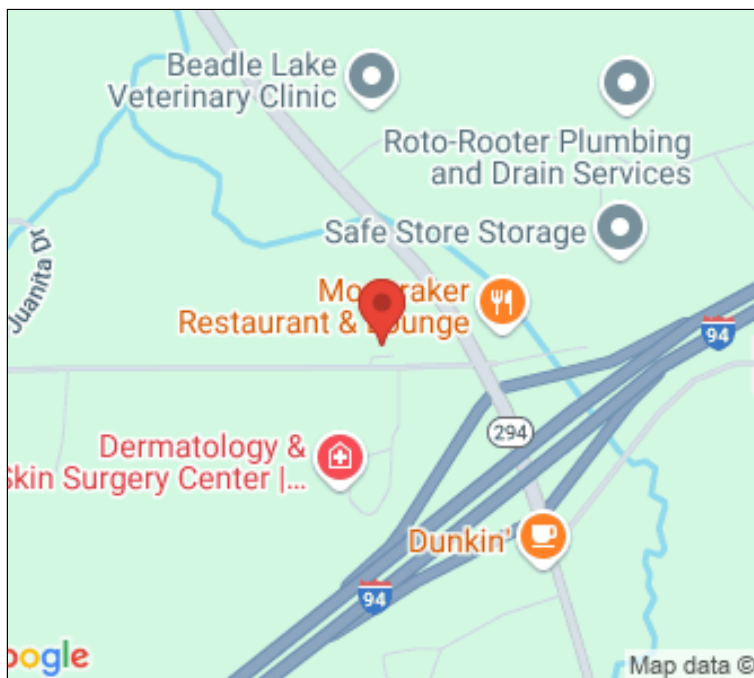
Sandy Edwards, CCIM
269.373.8102 [direct]
269.207.0971 [mobile]
sedwards@ccmichigan.com



PROPERTY FEATURES



County:	Calhoun
Municipality:	Emmett Charter Township
Available for Lease:	4,576 SF
Buildings / Units:	1 Building / 1 Unit
Building Levels:	1 Level
Total Acres:	2 Acres
Lot Dimensions:	340 x 256.23
Year Built:	1991
Zoning Code / Description:	GC / General Commercial
Exterior:	Brick
Sewer / Water:	Septic / Well
Heat Type / Source:	Forced Air / Gas
Restrooms:	3 / Common Area
Air Conditioning:	Central Air
Utilities Attached:	Gas and Electric
Barrier Free Access:	Yes



7085 E Drive North | Battle Creek, MI 49014

Maureen Daniel
269.384.8362 [direct]
269.330.9396 [mobile]
mdaniel@ccmichigan.com

Sandy Edwards, CCIM
269.373.8102 [direct]
269.207.0971 [mobile]
sedwards@ccmichigan.com



INTERIOR PHOTOS



7085 E Drive North | Battle Creek, MI 49014

Maureen Daniel
269.384.8362 [direct]
269.330.9396 [mobile]
mdaniel@ccmichigan.com

Sandy Edwards, CCIM
269.373.8102 [direct]
269.207.0971 [mobile]
sedwards@ccmichigan.com



INTERIOR PHOTOS



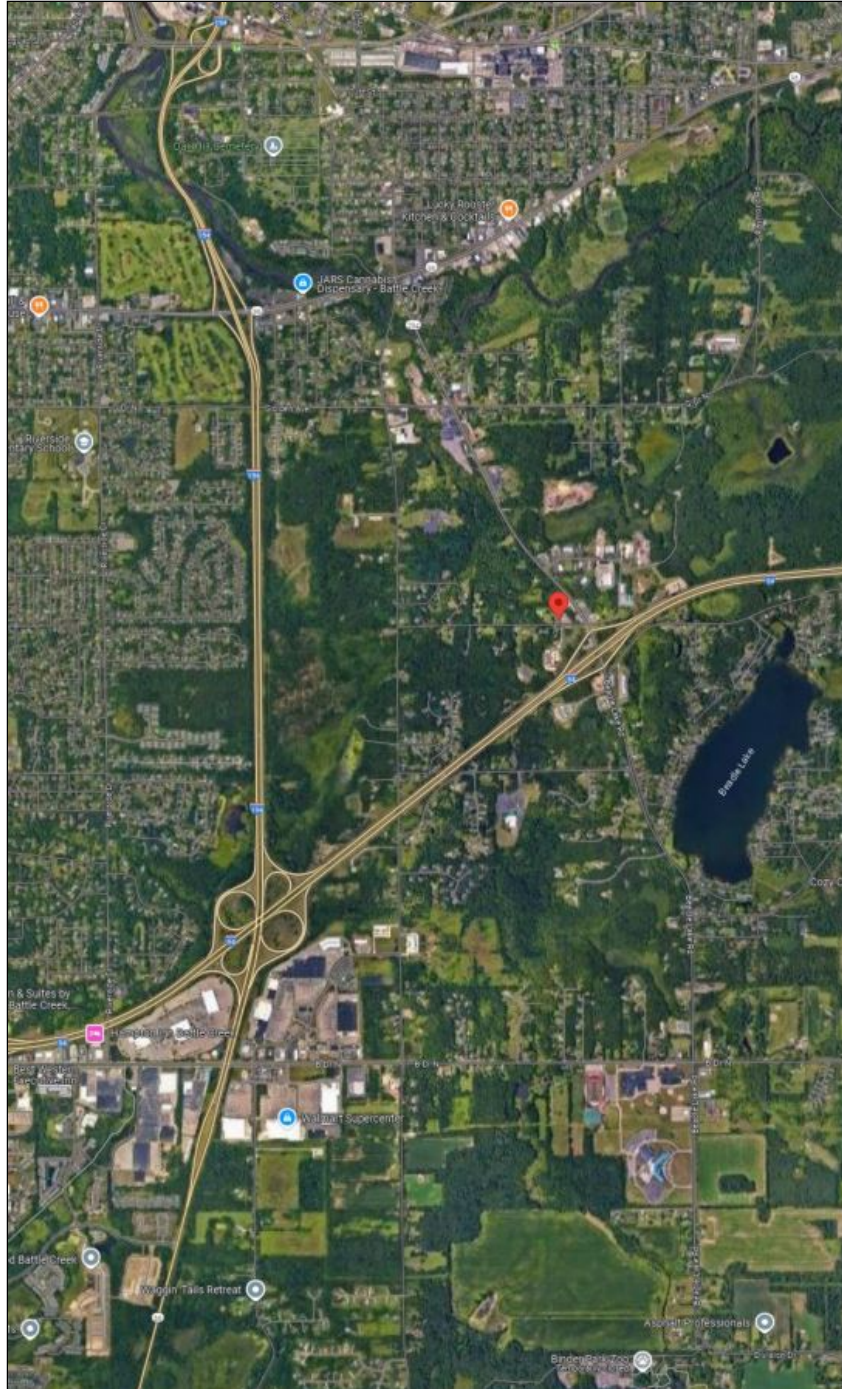
7085 E Drive North | Battle Creek, MI 49014

Maureen Daniel
269.384.8362 [direct]
269.330.9396 [mobile]
mdaniel@ccmichigan.com

Sandy Edwards, CCIM
269.373.8102 [direct]
269.207.0971 [mobile]
sedwards@ccmichigan.com



LOCATION AERIAL MAP



7085 E Drive North | Battle Creek, MI 49014

Maureen Daniel
269.384.8362 [direct]
269.330.9396 [mobile]
mdaniel@ccmichigan.com

Sandy Edwards, CCIM
269.373.8102 [direct]
269.207.0971 [mobile]
sedwards@ccmichigan.com

