



# YORK AT TERRACE DALE

7801 YORK ROAD | TOWSON, MARYLAND 21204

FOR  
LEASE

**BROKER**

**BONUS\* \$1/SF**

*\* For any new lease signed by  
2/28/2026*



**MACKENZIE**

COMMERCIAL REAL ESTATE SERVICES, LLC



# PROPERTY OVERVIEW

## HIGHLIGHTS:

- Direct suite entry and individual HVAC control
- Built out medical office suites
- On public transportation line
- Operable windows
- Plentiful free surface parking
- Locally owned and managed by the MacKenzie Companies
- In suite restrooms

### STORIES:

SUITE 124: 1,539 SF  
SUITE 224: 1,238 SF  
SUITE 240: 2,088 SF  
SUITE 345: 1,788 SF  
SUITE 350: 1,488 SF  
SUITE 345 & 350:  
COMBINE TO 3,276 SF

### PARKING:

4:1,000 SF

### TERM:

5-10 YEARS

### RENTAL RATE:

1ST FLOOR: \$24.50/SF, MG  
2ND & 3RD FLOORS:  
\$22.50/SF, MG

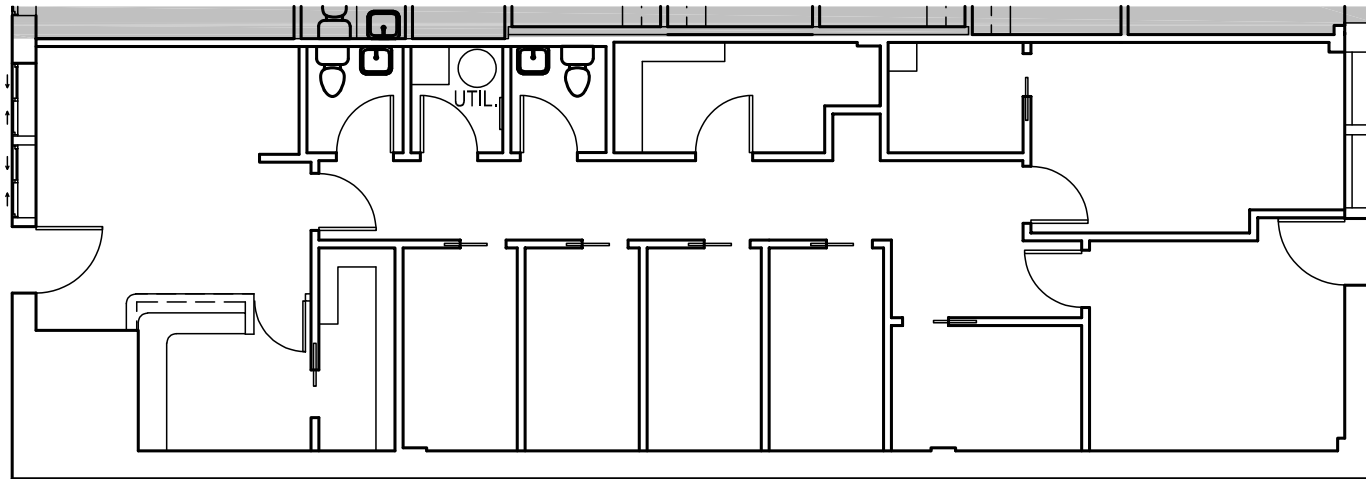


GOOGLE STREET VIEW



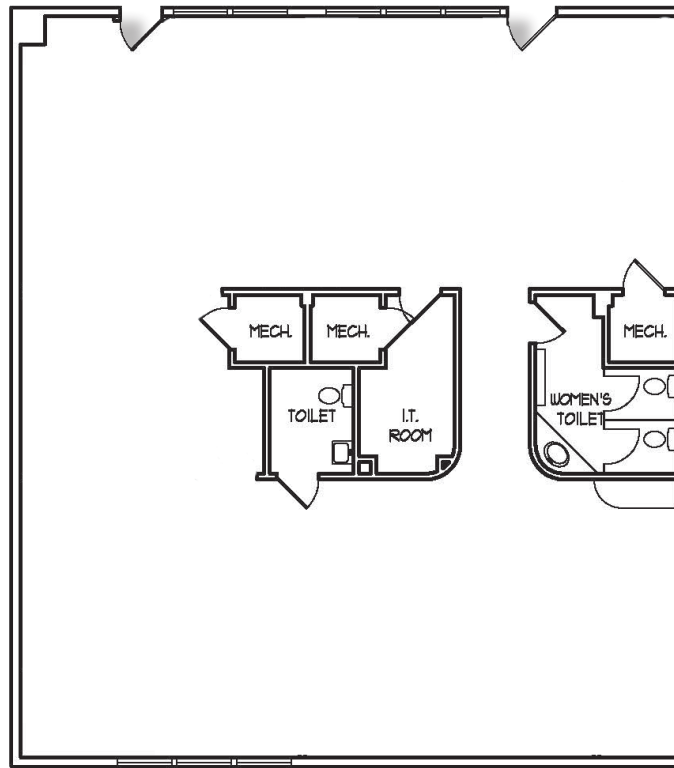
# FLOOR PLAN

SUITE 124: 1,539 SF



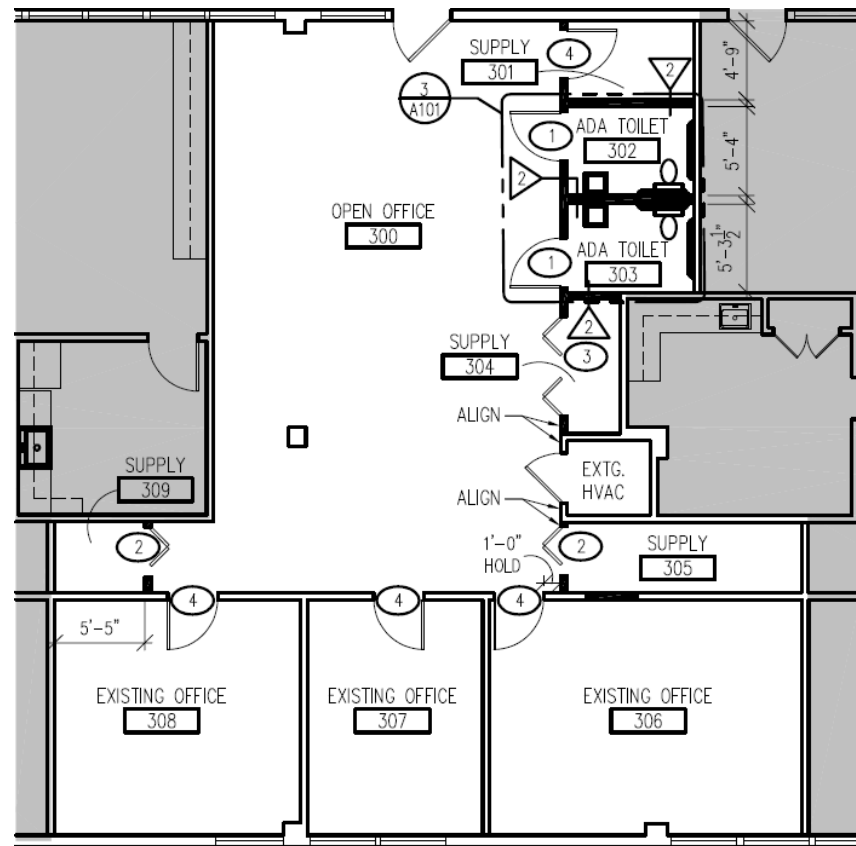
# FLOOR PLAN

SUITE 240: 2,088 SF



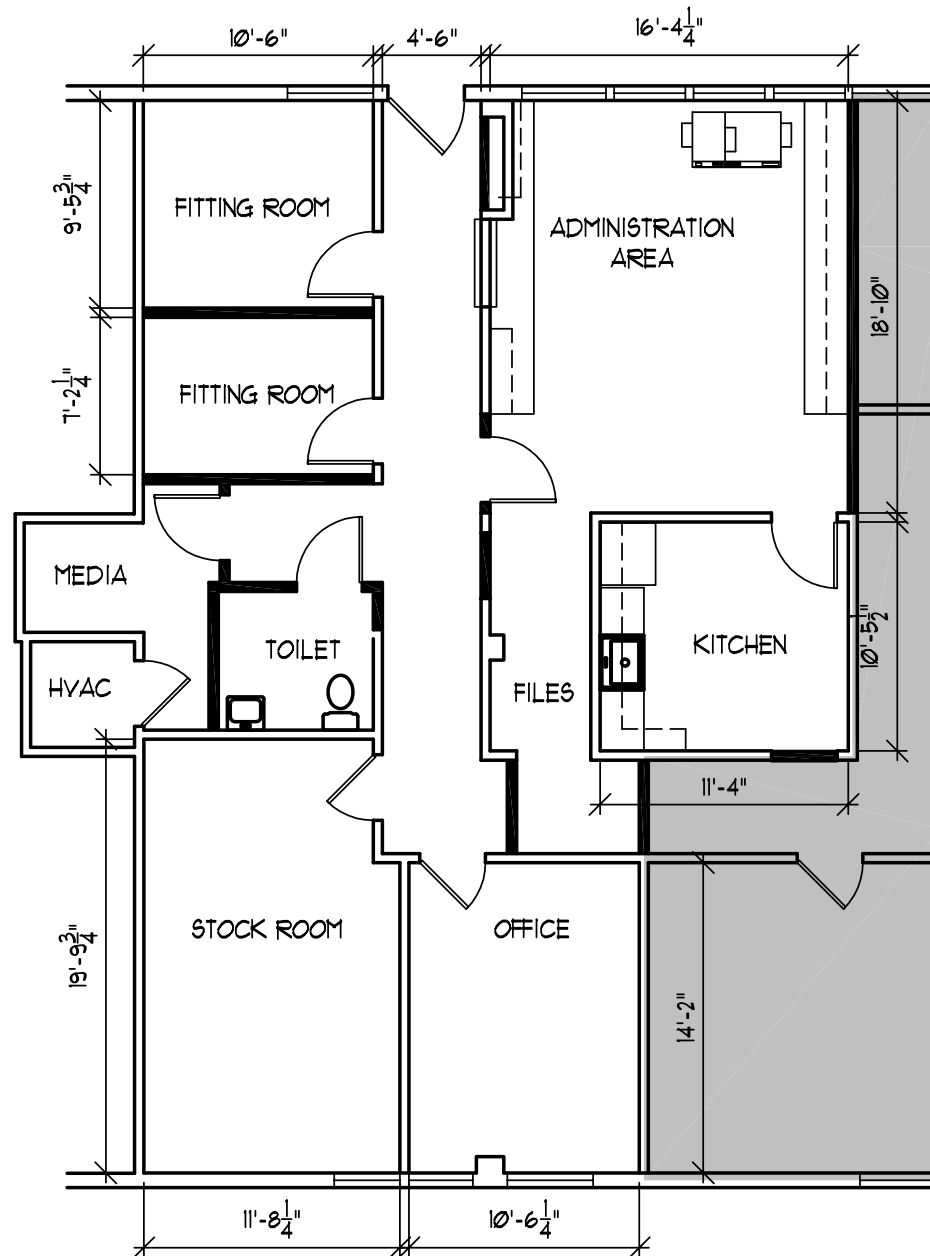
# FLOOR PLAN

SUITE 345: 1,788 SF



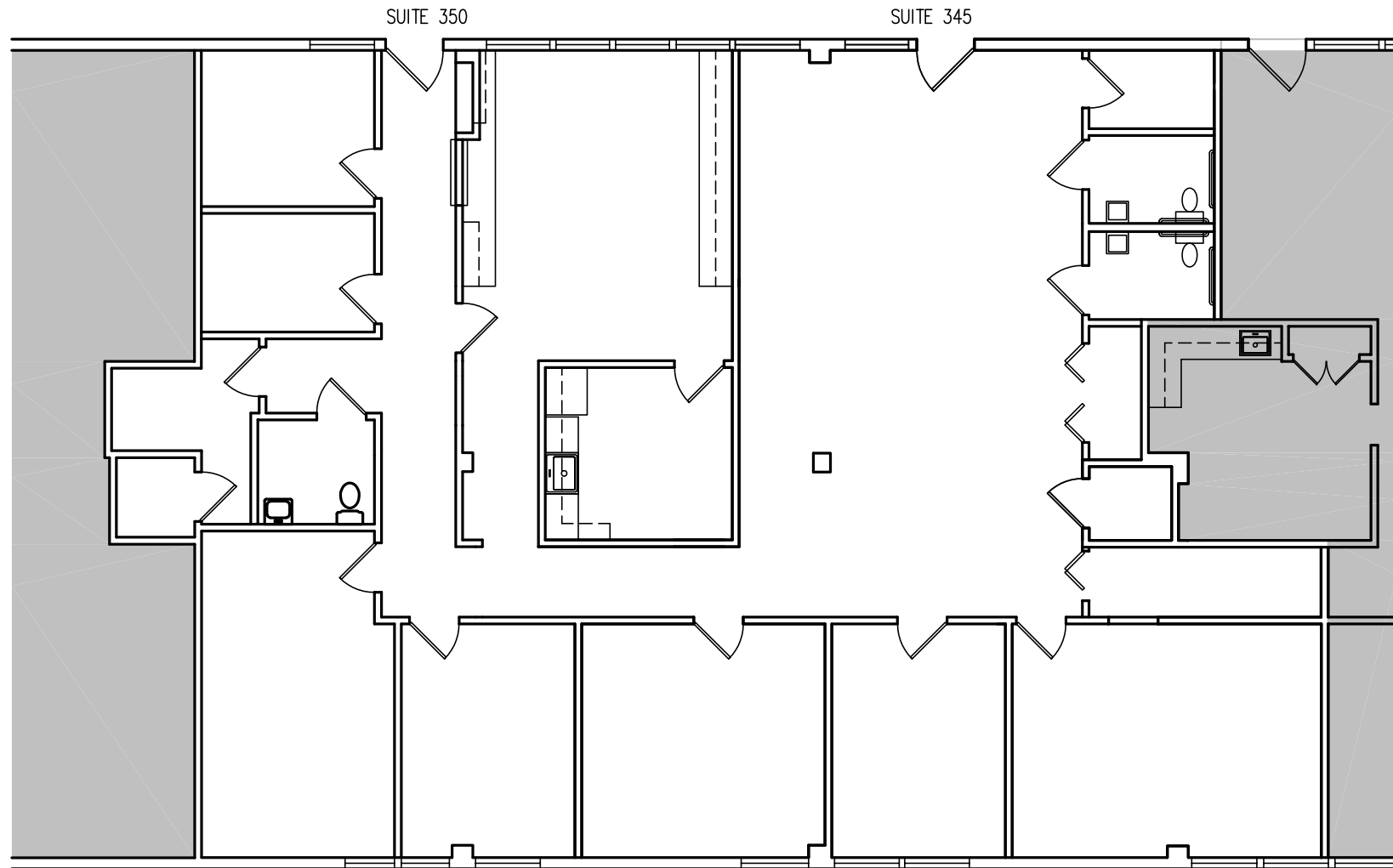
# FLOOR PLAN

SUITE 350: 1,488 SF



# FLOOR PLAN

SUITE 345 & 350: COMBINE TO 3,276 SF





# LOCAL BIRDSEYE



UPTOWN TOWSON

45

AIGBURTH RD

TOWSON UNIVERSITY

SITE

35,330 AADT

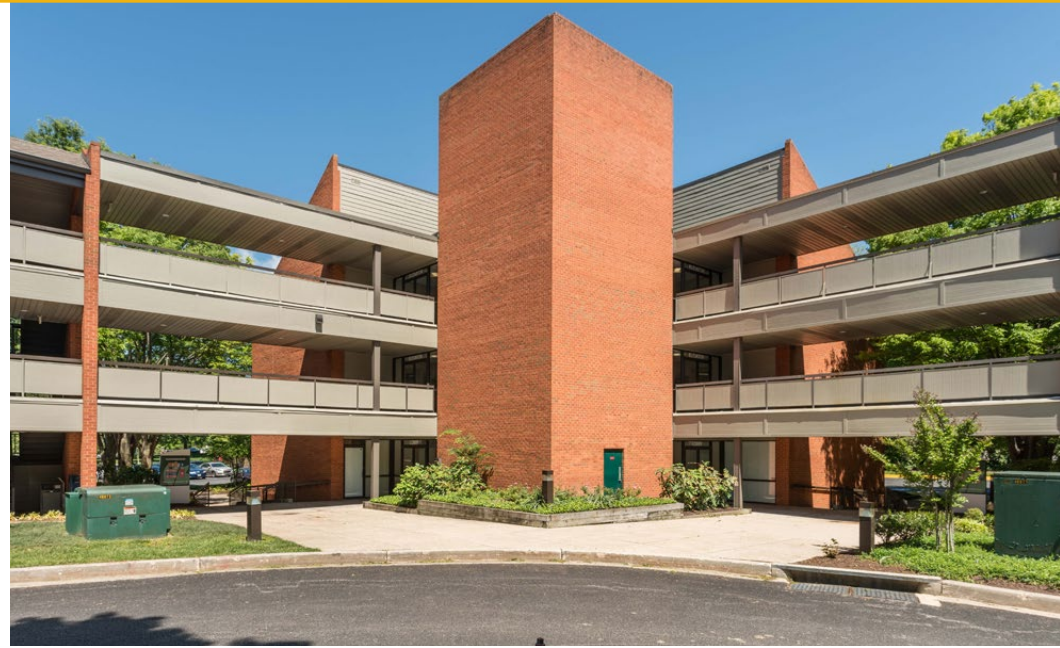
YORK RD

CROSS CAMPUS DR





# PROPERTY PHOTOS





# DEMOGRAPHICS

2023

RADIUS:

1 MILE

3 MILES

5 MILES

## RESIDENTIAL POPULATION



22,671

137,366

360,404

## DAYTIME POPULATION



39,774

143,647

348,173

## AVERAGE HOUSEHOLD INCOME



\$143,483

\$126,032

\$118,062

## NUMBER OF HOUSEHOLDS



7,156

55,072

146,528

## MEDIAN AGE



26.3

37.8

39.2

FULL DEMOS REPORT





# FOR MORE INFO CONTACT:



## MATT MUELLER

SENIOR VICE PRESIDENT & PRINCIPAL

410.494.6658

MMUELLER@mackenziecommercial.com



## JOE BRADLEY

SENIOR VICE PRESIDENT & PRINCIPAL

410.494.4892

JBRADLEY@mackenziecommercial.com



## HENSON FORD

VICE PRESIDENT

410.494.6657

HFORD@mackenziecommercial.com



## DYLAN BOZEL

REAL ESTATE ADVISOR

410.494.4896

DBOZEL@mackenziecommercial.com



VISIT **PROPERTY PAGE** FOR MORE INFORMATION.



# MACKENZIE

COMMERCIAL REAL ESTATE SERVICES, LLC

410-821-8585

2328 W. Joppa Road, Suite 200  
Lutherville, MD 21093

OFFICES IN:

ANNAPOLIS

BALTIMORE

BEL AIR

COLUMBIA

LUTHERVILLE

[www.MACKENZIECOMMERCIAL.com](http://www.MACKENZIECOMMERCIAL.com)

No warranty or representation, expressed or implied, is made as to the accuracy of the information contained herein, and same is submitted subject to errors, omissions, change of price, rental or other conditions, withdrawal without notice, and to any specific listing conditions imposed by our principals.