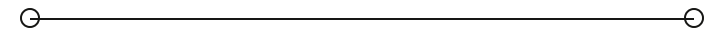


SALE / LEASE

Office Biscayne, medical/professional suites available

3416 WEST LAKE MARY BOULEVARD

Lake Mary, FL 32746



PRESENTED BY:

CHRIS BUTERA

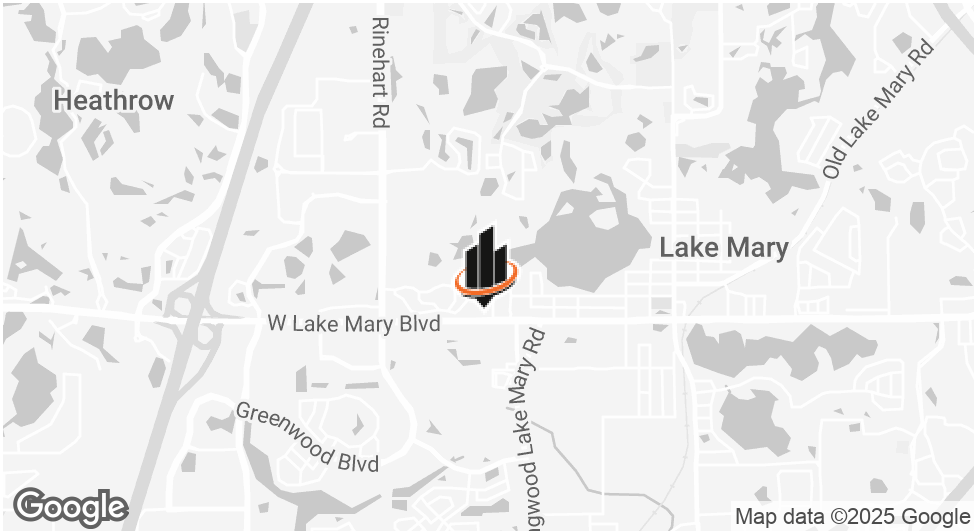
O: 386.453.4789

chris.butera@svn.com

FL #SL3083110



PROPERTY SUMMARY



OFFERING SUMMARY

SALE PRICE:	Contact Broker
LEASE RATE:	Contact Broker
BUILDING SIZE:	21,483 SF Total (12,287 SF Phase I)
AVAILABLE SUITES:	1,869 - 21,483 SF
LOT SIZE:	2.2 Acres
PARKING RATIO:	4.0/1,000 SF
DELIVERY:	December 2025
ZONING:	PO (City of Lake Mary)

PROPERTY OVERVIEW

Office Biscayne offers modern, adaptable office space perfected suited for medical and professional users. This brand new, two-story marquee building in Lake Mary, FL is under construction now with delivery in 2025. Located directly on Lake Mary Blvd, Office Biscayne offers tremendous exposure and visibility for your business/practice. These office condo units can be delivered as shell or fully built out to suit a user’s needs and desires. Sizes are available ranging from 1,869 SF units up to the entire 21,483 SF building. Act now to secure your spot in this exciting, new office project.

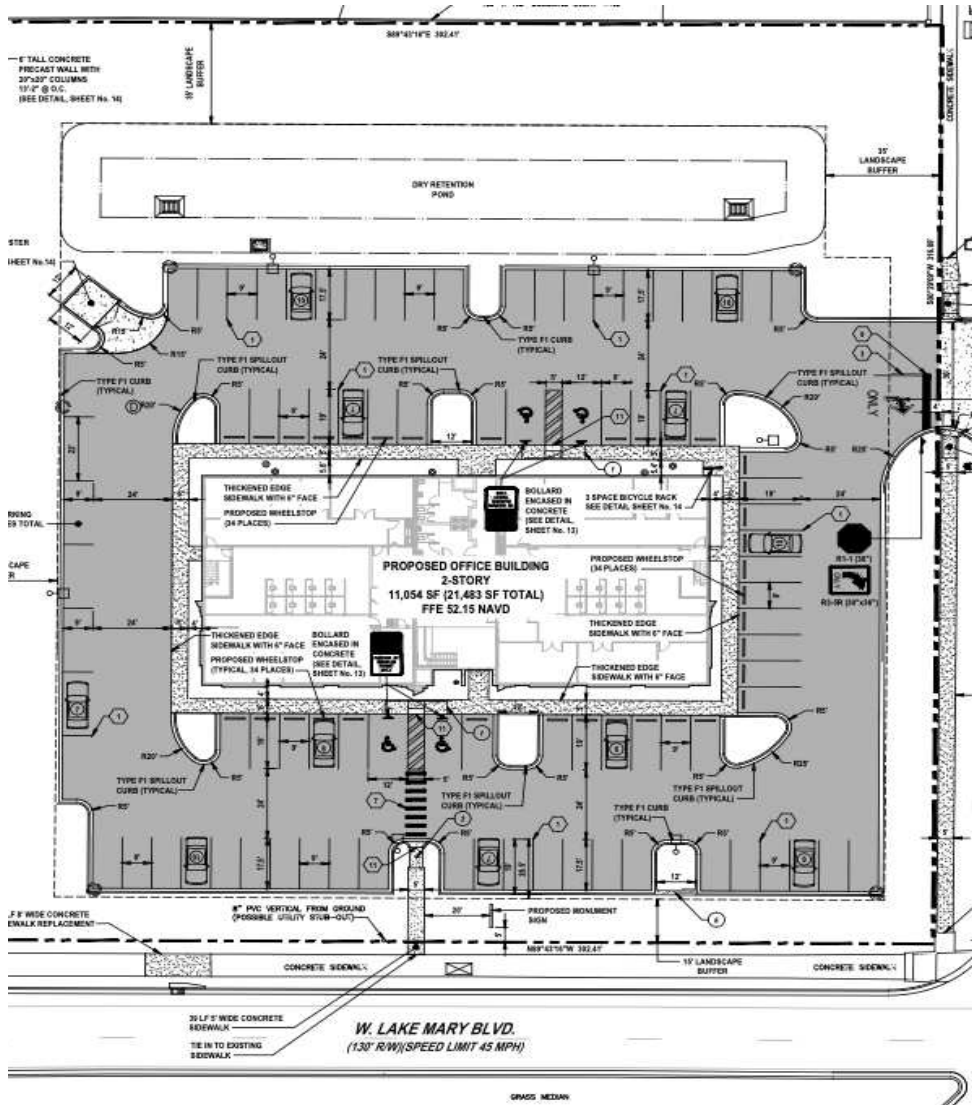
PROPERTY HIGHLIGHTS

- NOW UNDER CONSTRUCTION two-story office building in Lake Mary, FL
- Fully built out, turnkey suites in a bespoke building
- Units can be delivered in shell form if preferred
- Suites from 1,869 SF up to the 21,483 SF building

CHRIS BUTERA

O: 386.453.4789
chris.butera@svn.com
FL #SL3083110

SITE & FLOOR PLANS

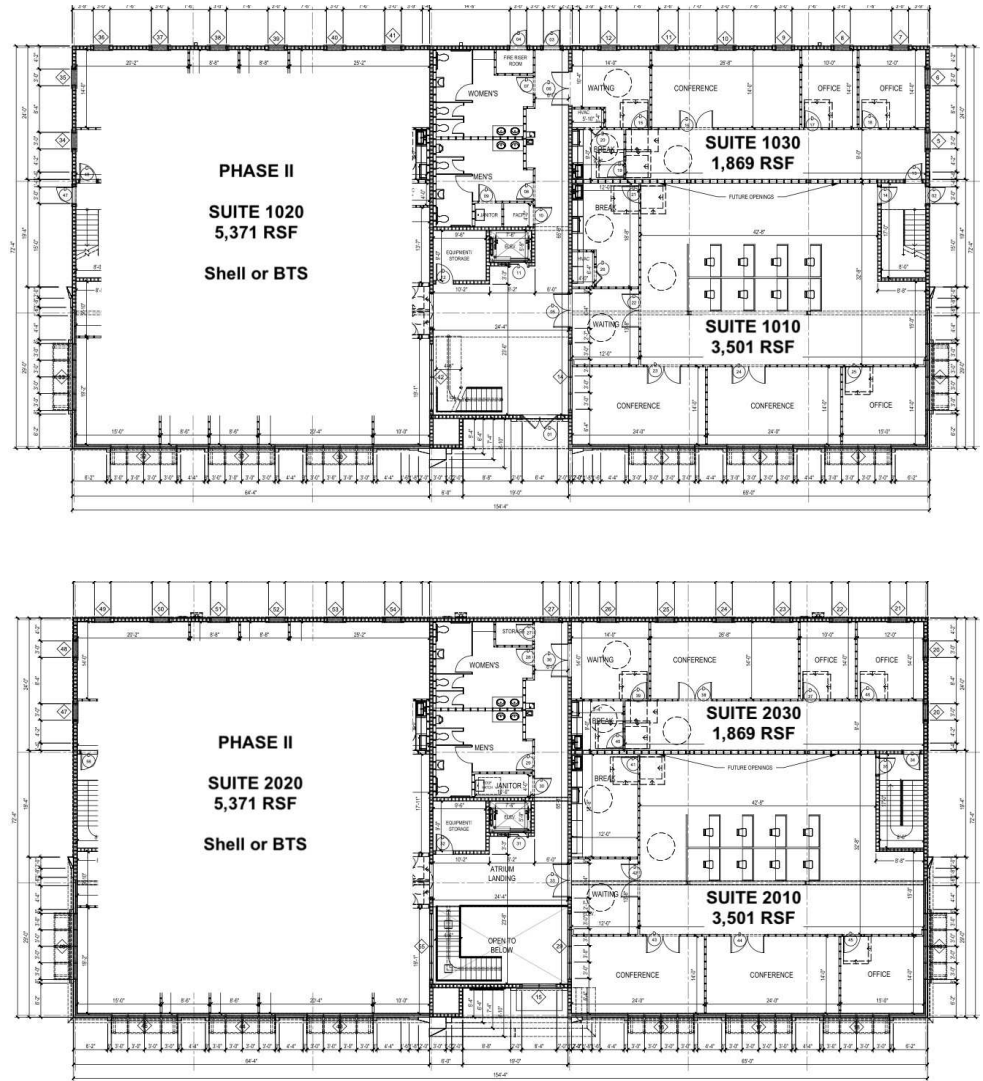


CHRIS BUTERA

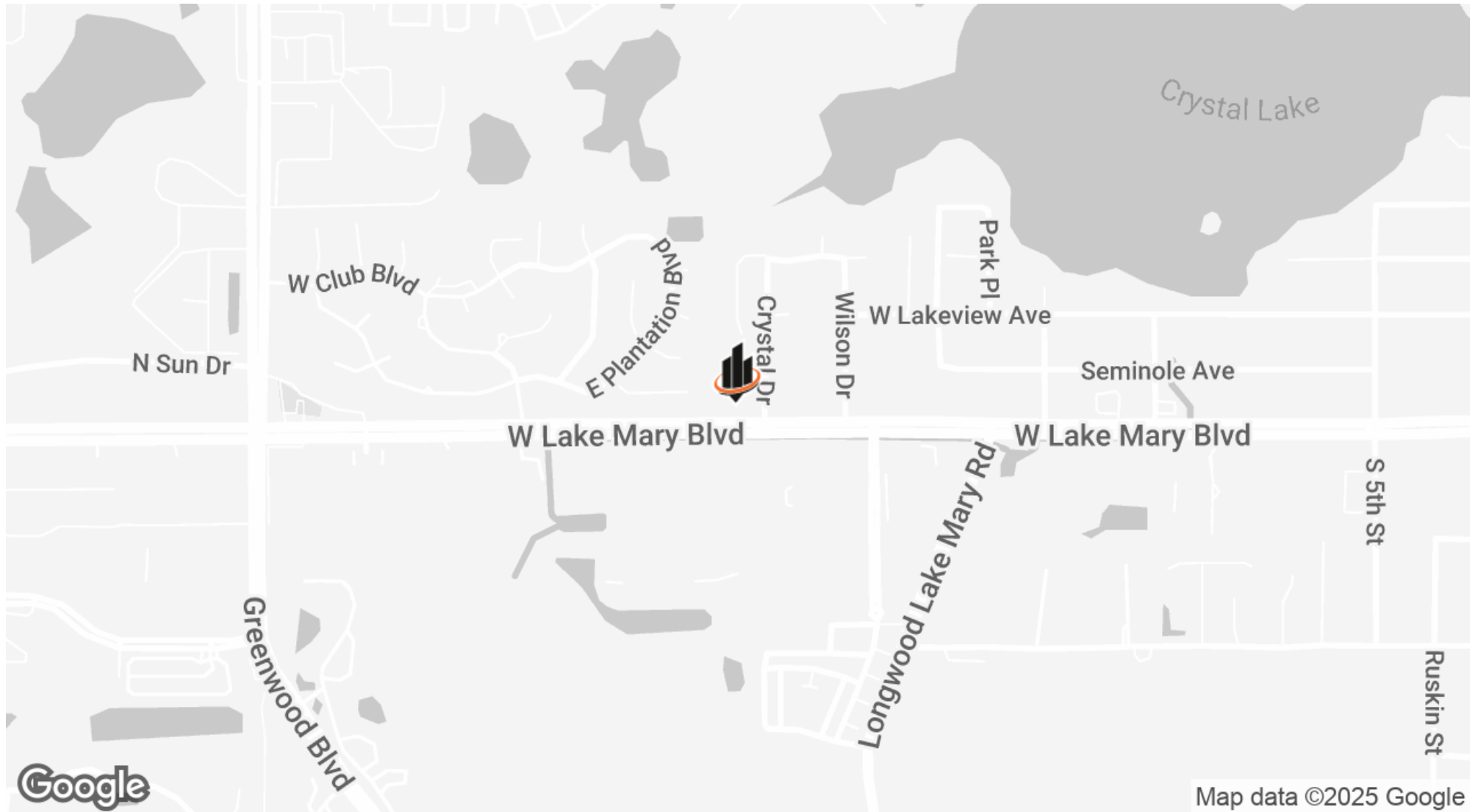
O: 386.453.4789

chris.butera@svn.com

FL #SL3083110



LOCATION MAP



CHRIS BUTERA

O: 386.453.4789

chris.butera@svn.com

FL #SL3083110