

Retail & Office | For Lease

CBRE

3110 Charles Street

Honolulu, HI 96816

3110 Charles Street
Honolulu, HI 96816
www.cbre.com/hawaii



VANILLA SHELL DELIVERY AVAILABLE, INQUIRE WITH AGENTS



SECOND FLOOR DIAMOND HEAD VIEWS

Property Description

This ground up development on 3110 Charles Street is in the bustling neighborhood of Kapahulu, a popular dining and shopping destination. Located next to the iconic Leonard's Bakery and within walking distance from Waikiki, this project appeals to an enviable customer base of visitors and locals, perfect for a single tenant operator or smaller retail and office users.

Rental Rates

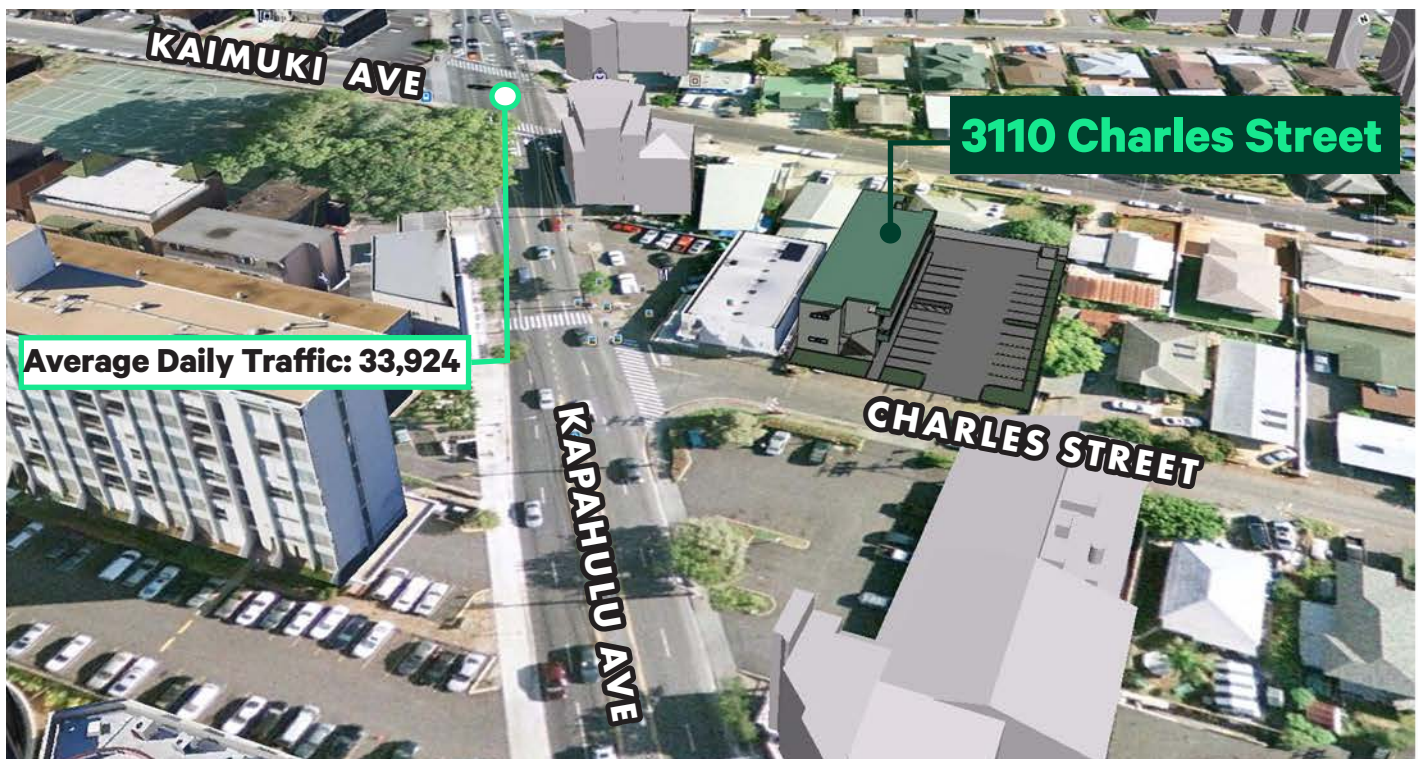
+ Units Available between 723 to 5,708 rentable square feet

+ Base Rent:

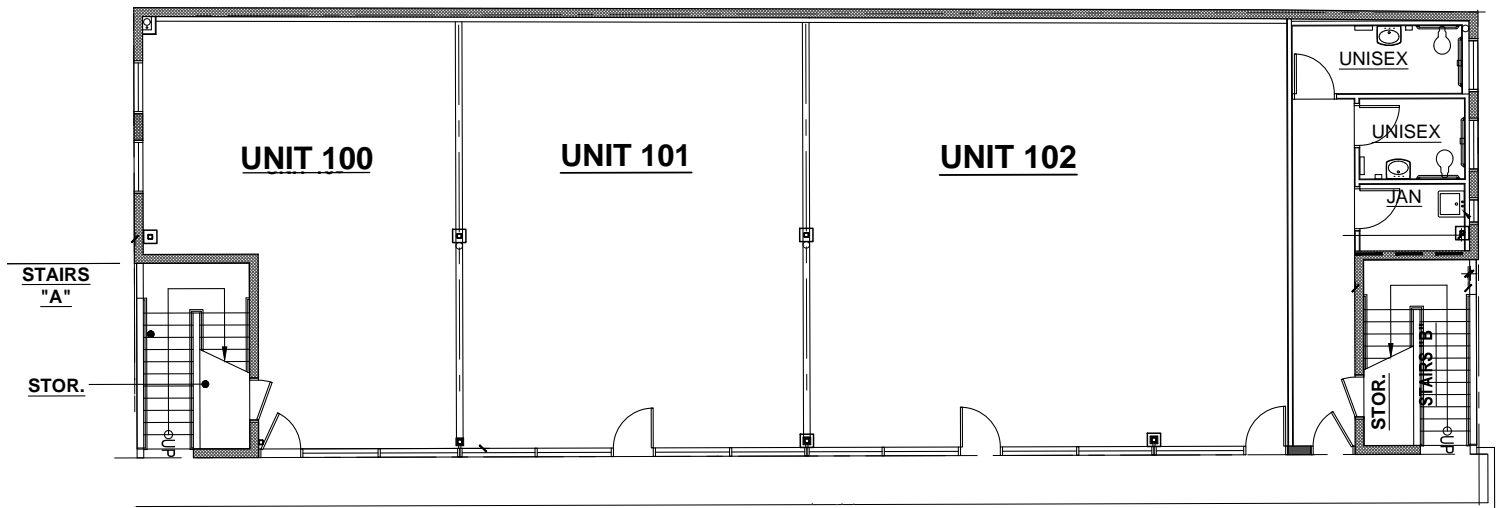
Ground Floor: Year 1 introductory rate of \$3.75/SF/Mo

Second Floor: Year 1 introductory rate of \$2.50/SF/Mo

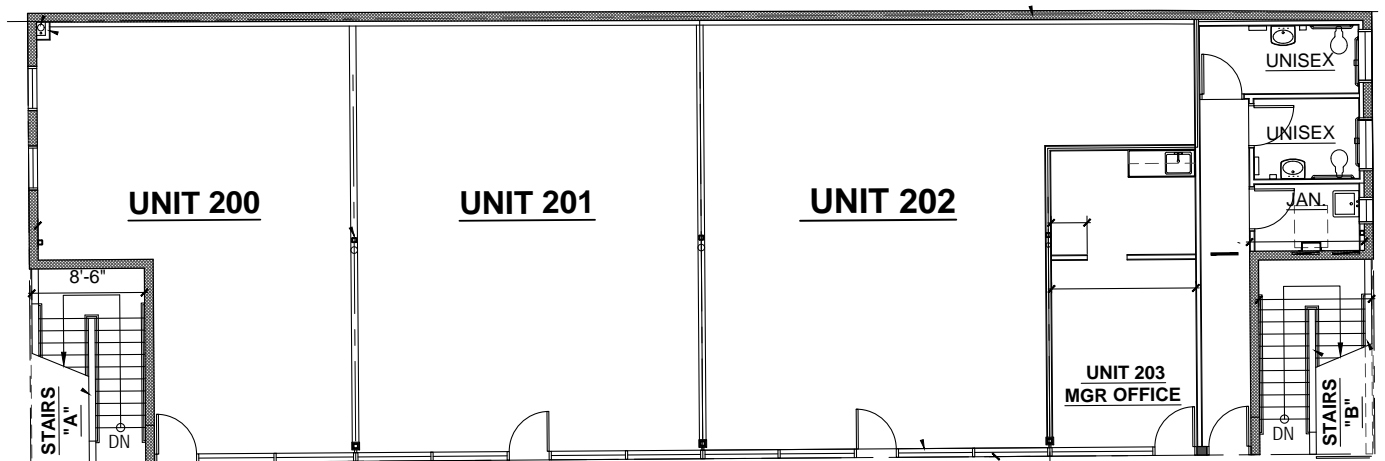
+ CAM/Operating Expenses - \$1.25 per square foot per month (estimated), plus separately metered electricity



Floor Plans



 **GROUND FLOOR PLAN**



 **UPPER FLOOR PLAN**

Available Units

Rentable SF 1st Floor

Suite	RSF
100	724
101	947
102	1,306
Total Floor RSF:	2,977

Rentable SF 2nd Floor

Suite	RSF
200	724
201	946
202	1,062
Total Floor RSF:	2,731

Total Building Area: 5,708 RSF

3110 Charles Street
Honolulu | HI 96816

Photo Gallery



Demographics	1 Mile	3 Miles	5 Miles
2023 Households	22,886	85,664	118,836
2023 Population - Current Year Estimate	53,438	191,026	268,698
2023 Average Household income	\$92,233	\$108,616	\$112,573

Area Overview



Contact Us

James C. Shipman (B)
Senior Vice President
+1 808 541 5184
james.shipman@cbre.com
Lic. RB-17830

Kelly K. Graf (S)
Associate
+1 808 541 5112
kelly.graf@cbre.com
Lic. RS-83271

© 2024 CBRE, Inc. All rights reserved. This information has been obtained from sources believed reliable, but has not been verified for accuracy or completeness. You should conduct a careful, independent investigation of the property and verify all information. Any reliance on this information is solely at your own risk. CBRE and the CBRE logo are service marks of CBRE, Inc. All other marks displayed on this document are the property of their respective owners, and the use of such logos does not imply any affiliation with or endorsement of CBRE. Photos herein are the property of their respective owners. Use of these images without the express written consent of the owner is prohibited.

JS:NAS_OF84_3110CharlesSt_08.29.24