

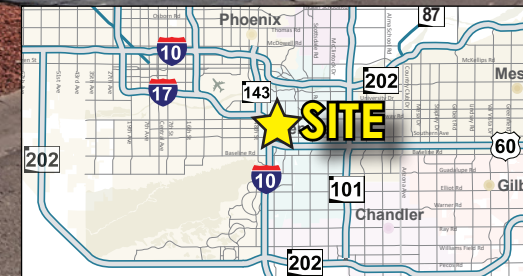
TEMPE INDUSTRIAL I

925 - 1027 W 23rd St, Tempe, AZ 85282

INDUSTRIAL SPACE FOR LEASE

Property Features

- ±67,200 SF Building
- GID Zoning, City of Tempe
- Fire Sprinklered Suite
- 12' x 14' Loading Doors
- Dock High & Grade Loading Available
- Ample Parking
- Located East of Priest Dr Between Broadway Rd & Southern Ave
- Less Than 2 Miles to US-60 & I-10 with Easy Access to SR-143 & Loop 202
- Minutes From Sky Harbor Int'l Airport

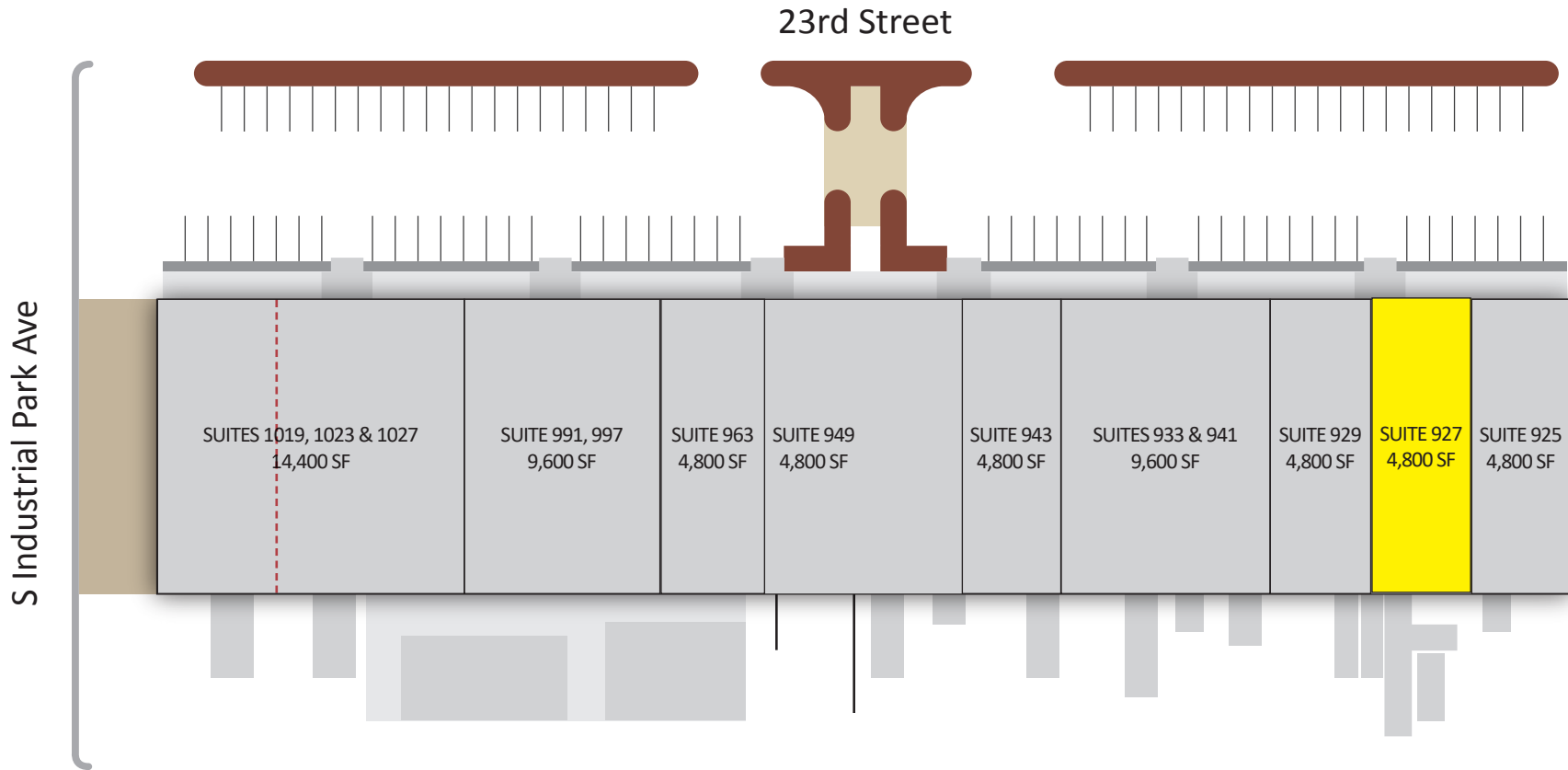


LISTING CONTACTS:

DARIN EDWARDS
D 480.214.1117
M 480.628.8661
DEDWARDS@CPIAZ.COM

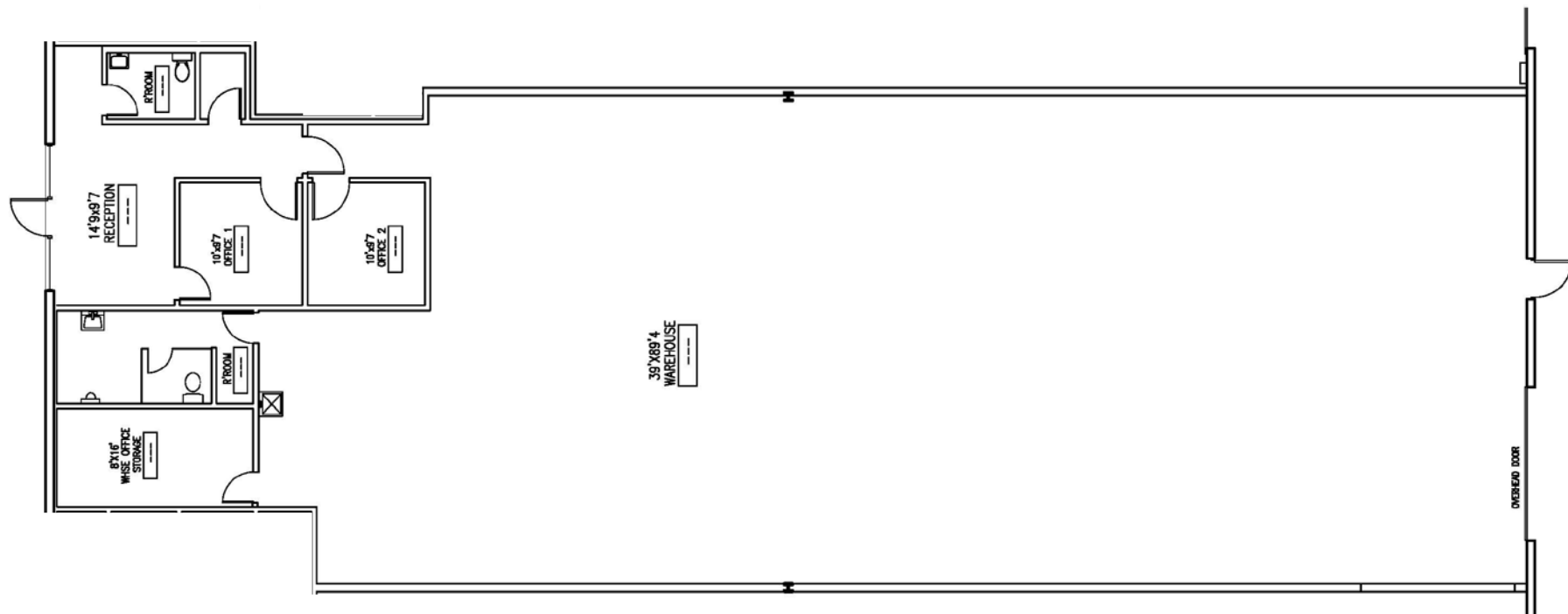
JOHN G. SOLDI, SIOR
D 480.966.1304
M 602.989.4584
JSOLDI@CPIAZ.COM

CORY SPOSI
D 480.621.4025
M 480.586.1195
CSPOSI@CPIAZ.COM



Suite 927
±4,800 SF
\$1.25 NNN

- Reception Area
- 2 Offices
- 2 Restrooms
- 1 Grade Level Door (12' x 14')
- 1 Dock
- Private Fenced Yard Included
- **AVAILABLE NOVEMBER 2024**



TEMPE INDUSTRIAL I 925-1027 W 23rd St

