

**SHORT TERM
LEASES
AVAILABLE**

KORE co-working

KORE 9250

9250 E COSTILLA AVE, GREENWOOD VILLAGE, CO

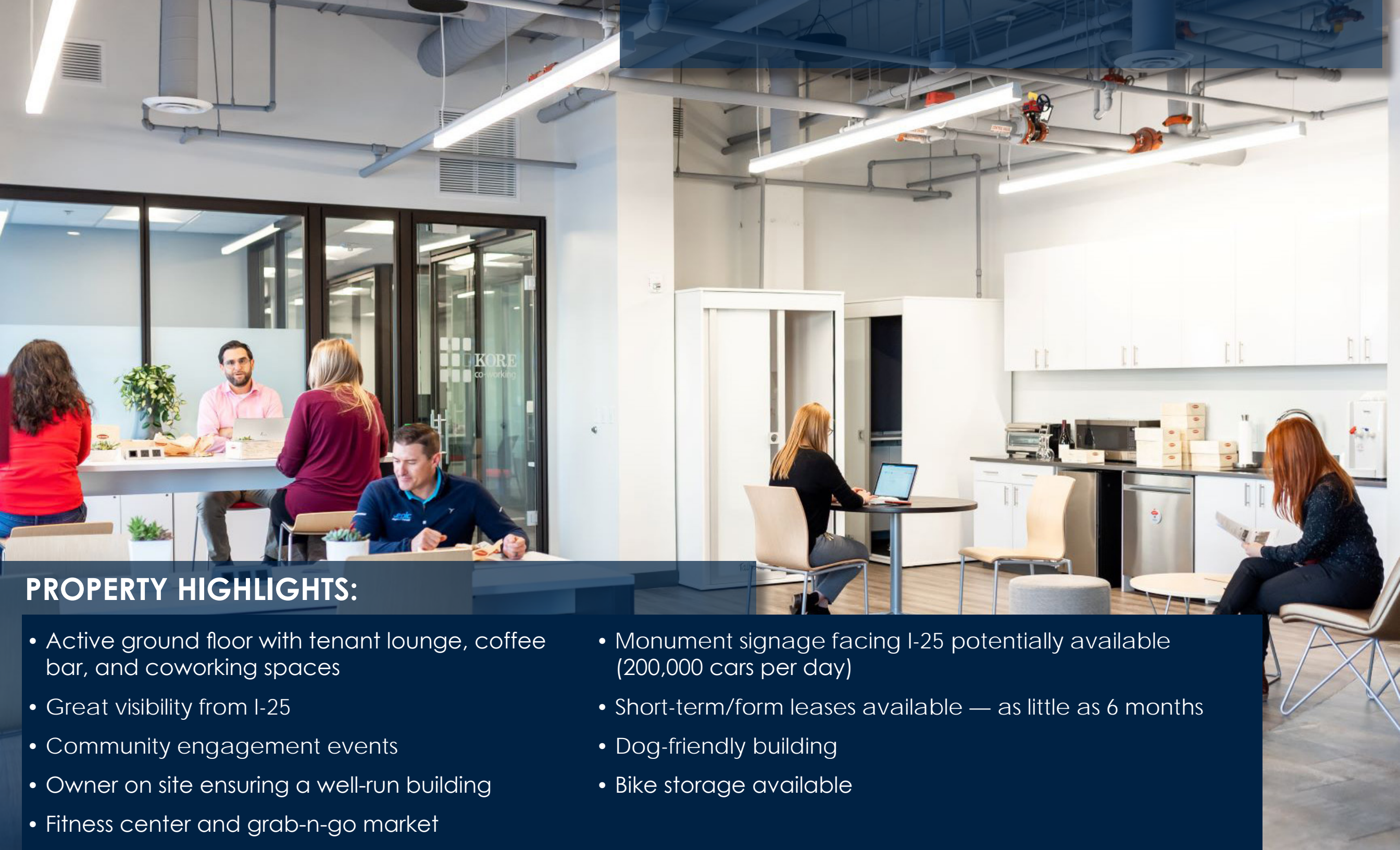
OFFICE OR MEDICAL

For leasing information contact:

Michelle Gertzman | 720.743.6399
mgertzman@premisescommercial.com

Matt Smith | 303.996.8460
msmith@premisescommercial.com





PROPERTY HIGHLIGHTS:

- Active ground floor with tenant lounge, coffee bar, and coworking spaces
- Great visibility from I-25
- Community engagement events
- Owner on site ensuring a well-run building
- Fitness center and grab-n-go market
- Monument signage facing I-25 potentially available (200,000 cars per day)
- Short-term/form leases available — as little as 6 months
- Dog-friendly building
- Bike storage available



CLOSE TO SHOPPING,
RESTAURANTS & PARKS



KORE
9250



WALNUT HILLS
ELEMENTARY

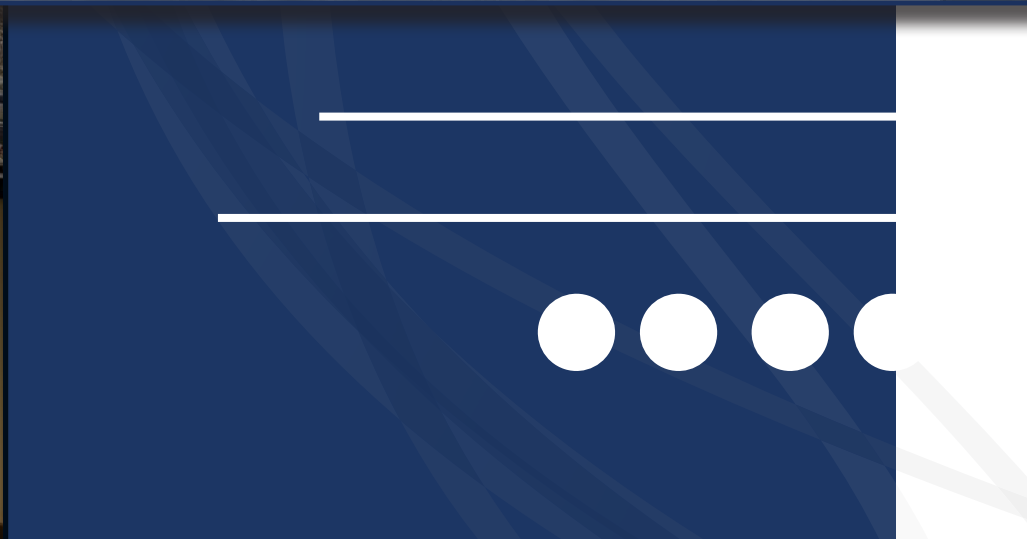
WALNUT HILLS
PARK

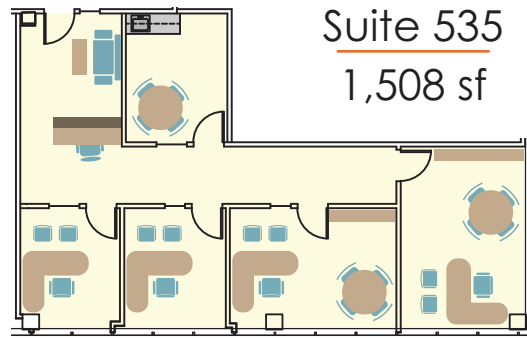


HUNTERS HILL
PARK

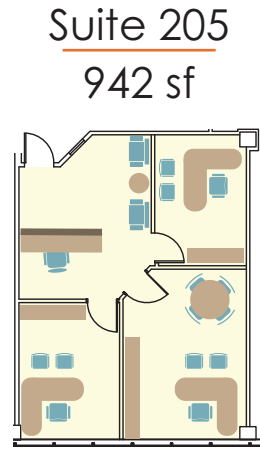
DRY CREEK
ELEMENTARY





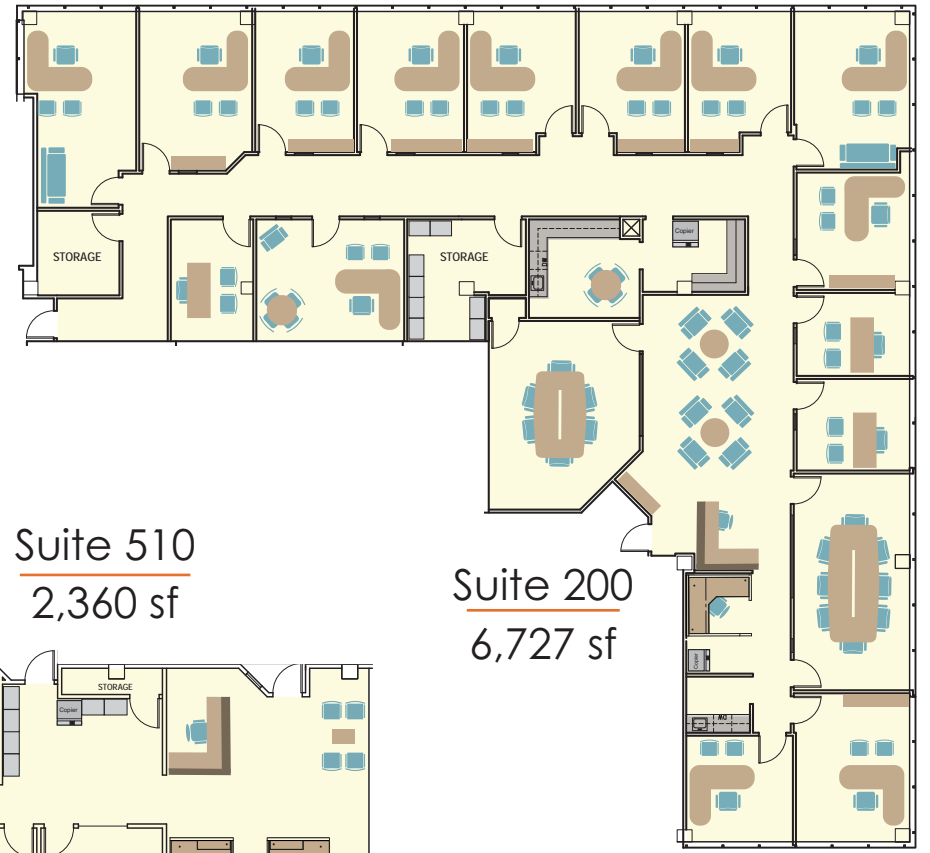


Suite 535
1,508 sf



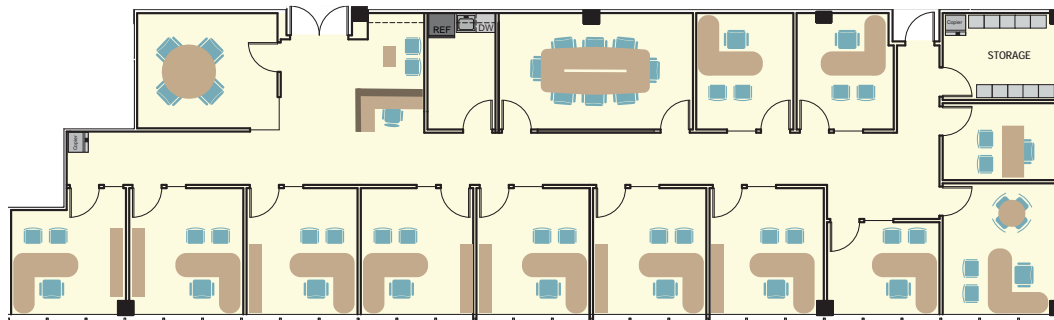
Suite 205
942 sf

(Available 9/1/2026)

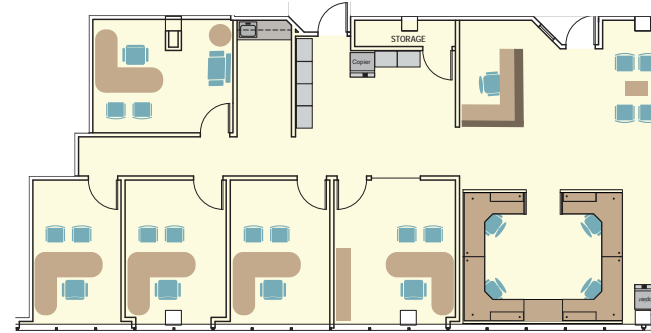


Suite 200
6,727 sf

Suite 305
4,189 sf



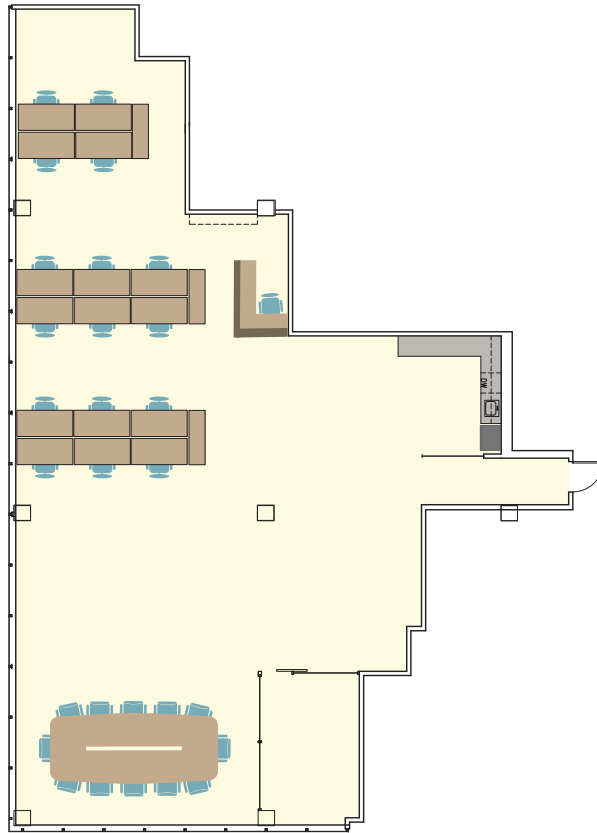
Suite 510
2,360 sf



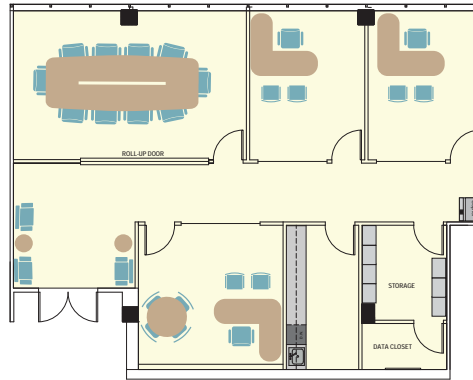
AVAILABLE SUITES



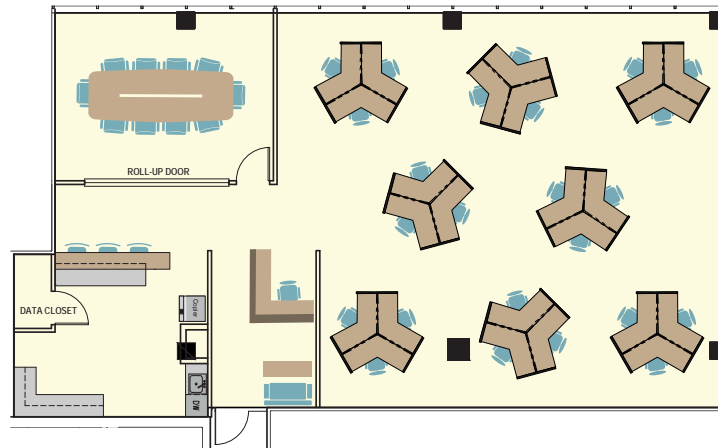
Suite 505
3,330 sf



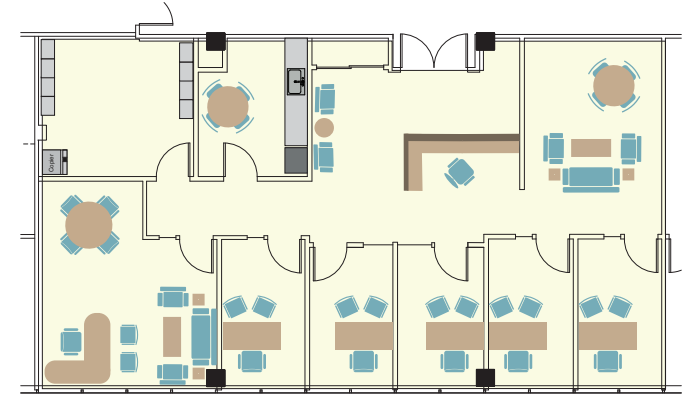
Furnished with Cabling & Internet Enterprise



Suite 620
2,007 sf



Suite 650
2,719 sf



(Available 2/1/2026)

Suite 655
2,293 sf



For leasing information contact:

Michelle Gertzman | 720.743.6399
mgertzman@premisescommercial.com

Matt Smith | 303.996.8460
msmith@premisescommercial.com

AVAILABLE SUITES