

## OFFICE AND OFFICE FLEX SPACES FOR LEASE



**1750 N. FLORIDA MANGO RD., WPB, FL. 33409**

### **FEATURES:**

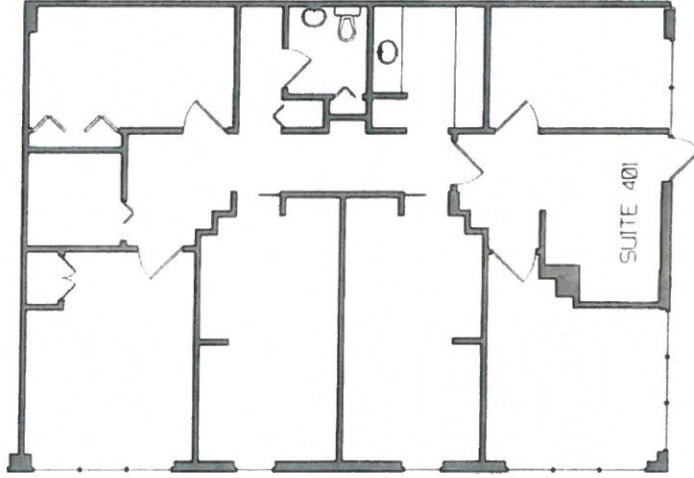
- Located between Belvedere Rd. and Okeechobee Blvd. on N. Florida Mango Rd.
- Minutes from I-95 and Palm Beach International Airport.
- One story campus style offices and office/warehouse spaces (no loss factor).
- Abundant surface parking convenient to front door (3.5 spaces/1,000sq.ft.).
- Immediate occupancy. 24/7 access.
- Office spaces available: 1,462 SF
- Office/Warehouse spaces available: N/A
- Comcast & AT&T available to the unit.
- Lease Rates: \$16.50+ \$7.73cam + sales tax, tenant pays own electric, janitorial, data.

***For additional information or to schedule an appointment, contact:***

**Henry Gluckstern, Senior Associate**  
**ComNet Realty, Inc.**  
***Commercial Real Estate Solutions***

Phone (561) 999-0006, ext 107, fax (561) 999-0007,  
henryg@comnetrealty.com

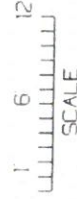
*All information is subject to errors, omission or withdrawal at anytime without notice.*



1462 SF



1750 N FLORIDA MANGO RD.  
SUITE 401



WEST PALM BEACH, FL  
AS MEASURED JUNE 01, 2009



MEASURE MASTERS  
Floor Planning & Blue Print Service  
800-709-3332