

2323 WEST 66TH STREET

RICHFIELD, MN





2323 WEST 66TH STREET

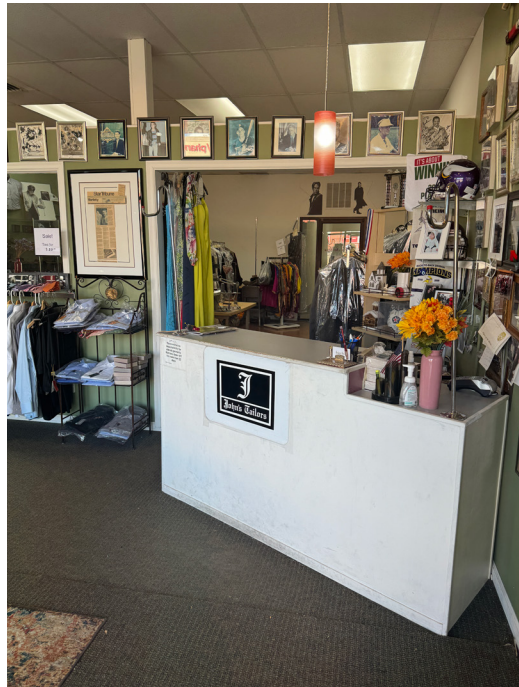
SITE FEATURES

Location	66th St & Penn Ave, Richfield, MN
Suite Size	Approx. 500-2,800 SF
Building Class	B
Parking	Approx 60 Stalls
Number of Floors	2
Rental Rate Office	\$10.00 - \$12.00 PSF
Rental Rate Retail	\$20.00 PSF
Expenses	\$10.63 PSF

PROPERTY FEATURES

- Centrally located in Richfield off Penn & 66th St
- approximately 500 square feet on the 1st floor
- approximately 2,800 square feet on the 2nd floor
- 3 private offices with a reception area
- Ample parking
- Close proximity to Southdale Mall and other amenities

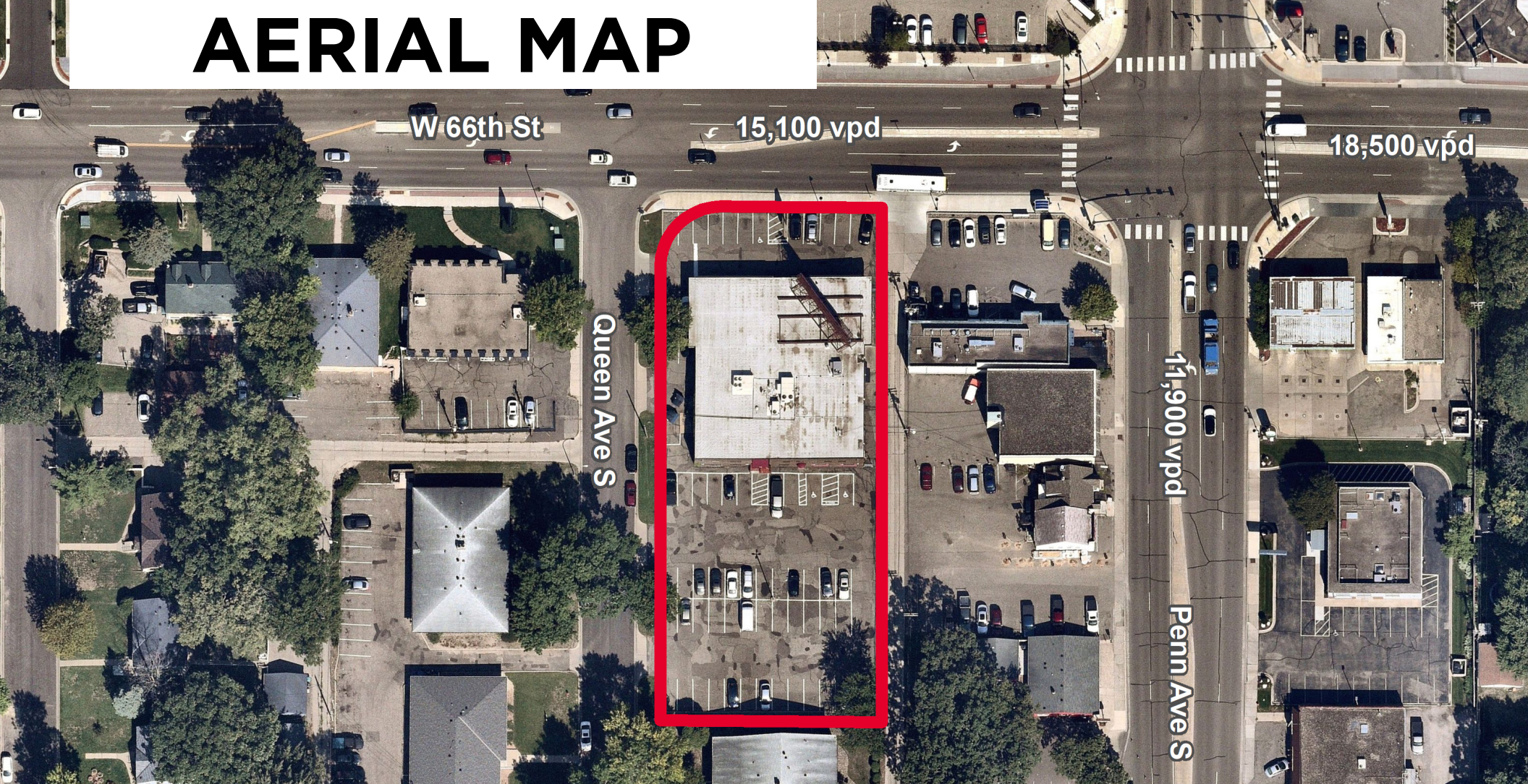
PROPERTY PHOTOS



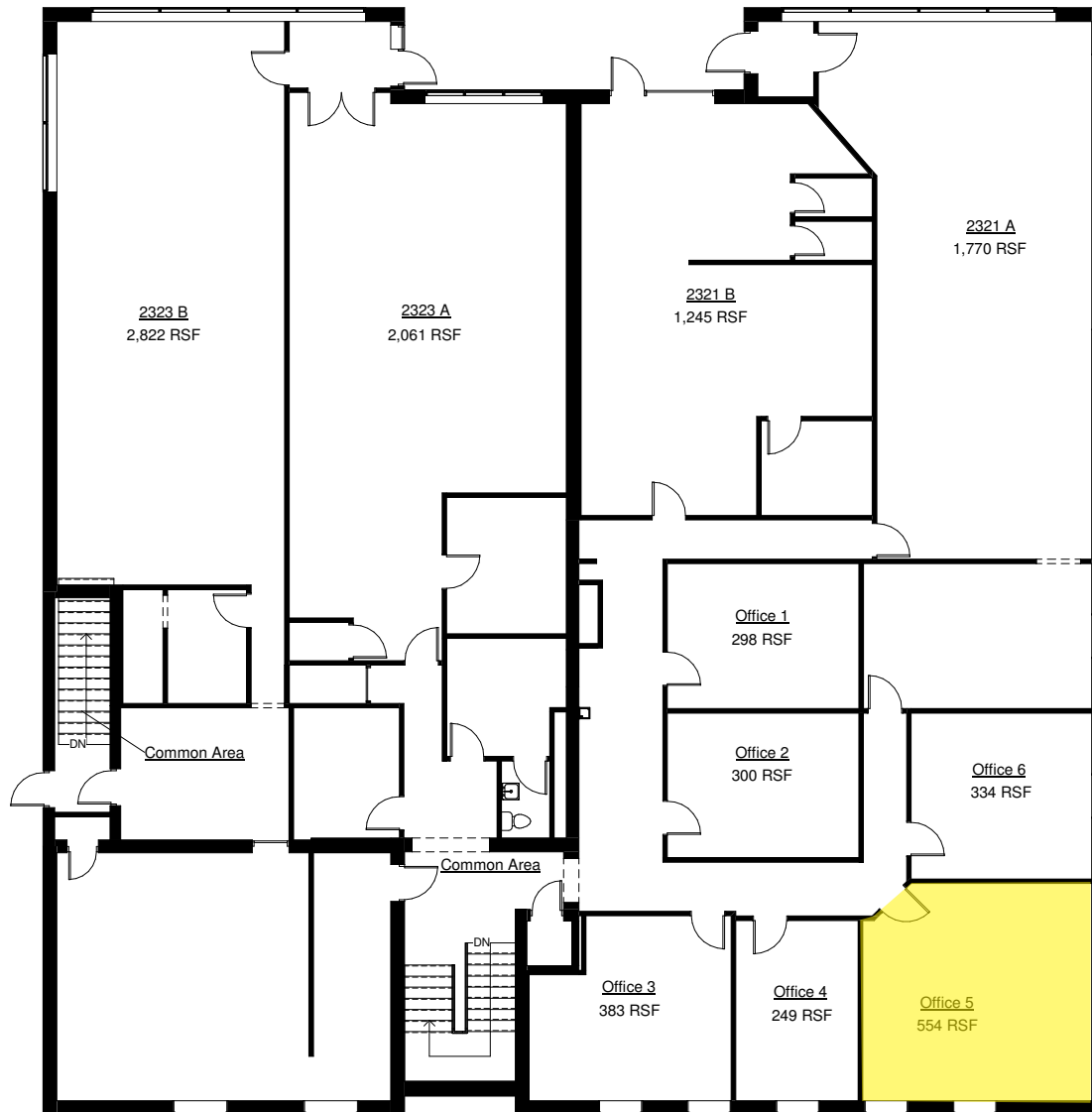
AERIAL MAP



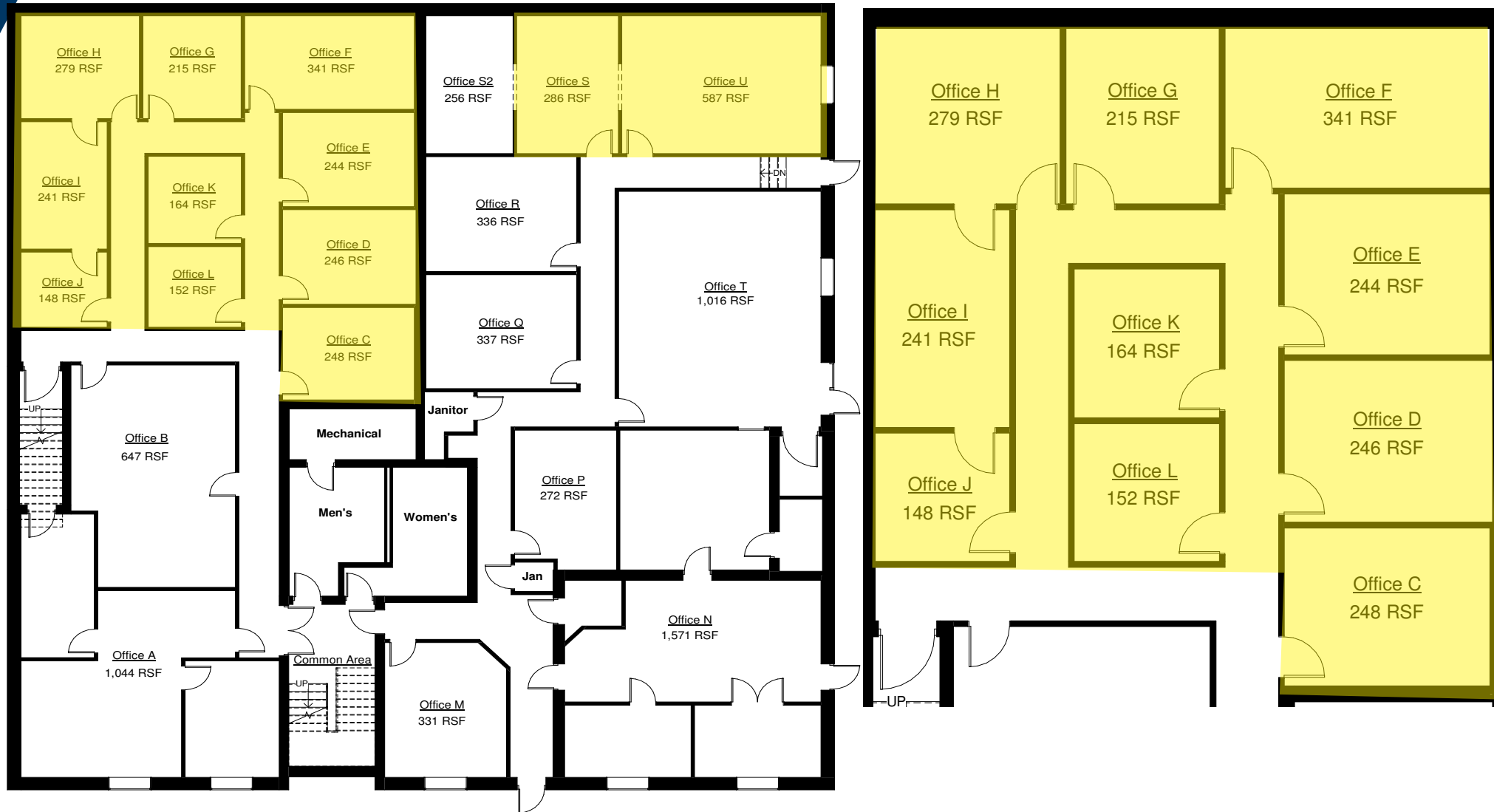
AERIAL MAP



MAIN LEVEL FLOOR PLAN



LOWER LEVEL FLOOR PLAN



Lower Level



Contact Info

Skip Melin, CCIM

Senior Director

+1 952 465 3377

william.melin@cushwake.com

Amber Vickerman

Associate

+1 952 562 9239

amber.vickerman@cushwake.com

©2025 Cushman & Wakefield. All rights reserved. The information contained in this communication is strictly confidential. This information has been obtained from sources believed to be reliable but has not been verified. NO WARRANTY OR REPRESENTATION, EXPRESS OR IMPLIED, IS MADE AS TO THE CONDITION OF THE PROPERTY (OR PROPERTIES) REFERENCED HEREIN OR AS TO THE ACCURACY OR COMPLETENESS OF THE INFORMATION CONTAINED HEREIN, AND SAME IS SUBMITTED SUBJECT TO ERRORS, OMISSIONS, CHANGE OF PRICE, RENTAL OR OTHER CONDITIONS, WITHDRAWAL WITHOUT NOTICE, AND TO ANY SPECIAL LISTING CONDITIONS IMPOSED BY THE PROPERTY OWNER(S). ANY PROJECTIONS, OPINIONS OR ESTIMATES ARE SUBJECT TO UNCERTAINTY AND DO NOT SIGNIFY CURRENT OR FUTURE PROPERTY PERFORMANCE.