

# 333 NORTH MAIN STREET

— RICHFIELD, UT 84701 —

51-room hotel off I-70 with prime access to national parks, scenic trails, and major landmarks.

**APEX**  
KW SOUTH VALLEY  
KELLERWILLIAMS



PROPERTY  
WEBSITE



PROPERTY  
VIDEO



IN THE HEART OF RICHFIELD, UTAH

**RAMADA**  
BY WYNDHAM

**03** Executive Summary

---

**05** Financial Overview

---

**07** Property Photos

---

**13** Floor Plans

---

**16** Amenities Package

---

**18** Location Overview

---



**TRENTON BRIGHT**  
**Team Lead**

contact@apex-cre.com  
UT License: 7961776



**JON ROBINSON**  
**Listing Contact**

(801) 518-4491  
jon@apex-cre.com

This document, including the attached Offering Memorandum, contains confidential information relating to the property and the seller and has been prepared and distributed by Apex Commercial Real Estate Services, operating under KW Commercial. The recipient of this information acknowledges and agrees to the following:

- *Confidentiality Obligation:* Recipient shall keep all information contained in this document strictly confidential and shall not disclose, disseminate, or share it with any third party without the prior written consent of Apex Commercial Real Estate Services or the property owner.
- *Purpose of Use:* Recipient may use the confidential information solely for the purpose of evaluating and considering a potential transaction as described in the Offering Memorandum.
- *Non-Disclosure Agreement:* This notice does not constitute a separate Non-Disclosure Agreement (NDA) but serves as a reminder of the recipient's obligations concerning the confidential information provided herein.
- *Return or Destruction:* Upon the request of Apex Commercial Real Estate Services or the conclusion of the evaluation process, Recipient shall promptly return all copies of this document and its contents or, at Apex Commercial Real Estate Services' option, destroy such materials.
- *No Rights Granted:* This notice does not grant any license or rights to the recipient with respect to the confidential information. By accessing or reviewing this document, the recipient acknowledges their understanding of and agreement to the terms and obligations set forth in this Confidentiality Notice.



# Executive **Summary**

51-Room Hotel Offering in the Heart of Richfield



**333** N. Main Street

# 333 N. Main St.

## HEART OF RICHFIELD, UTAH

Located in the scenic core of Central Utah, the Ramada Inn in Richfield presents a 51-room hospitality asset offering direct access to major outdoor recreation areas, national parks, and key community attractions. This 34,135 SF hotel features an outdoor pool, spa, fitness center, banquet facilities, and an on-site ice cream shop.

Positioned just off I-70 and adjacent to Fish Lake National Forest, the property serves as a convenient and amenity-rich base for travelers exploring Southern Utah. Guests benefit from proximity to Snow College Richfield Campus, Sevier Valley Center, and the iconic Mystic Hot Springs.



**1979 / 2025**

YEAR BUILT / RENOVATED



**34,135**

GROSS SF



**Commercial**

ZONING



**1.05**

LOT AC

**51**

TOTAL ROOMS

- Pool
- Free Wi-Fi
- Free Parking
- Meeting Room
- Banquet Facilities
- Sauna
- Fitness Center
- Continental Breakfast
- Business Center
- 24-Hour Reception



**PROPERTY  
VIDEO**



**PROPERTY  
WEBSITE**



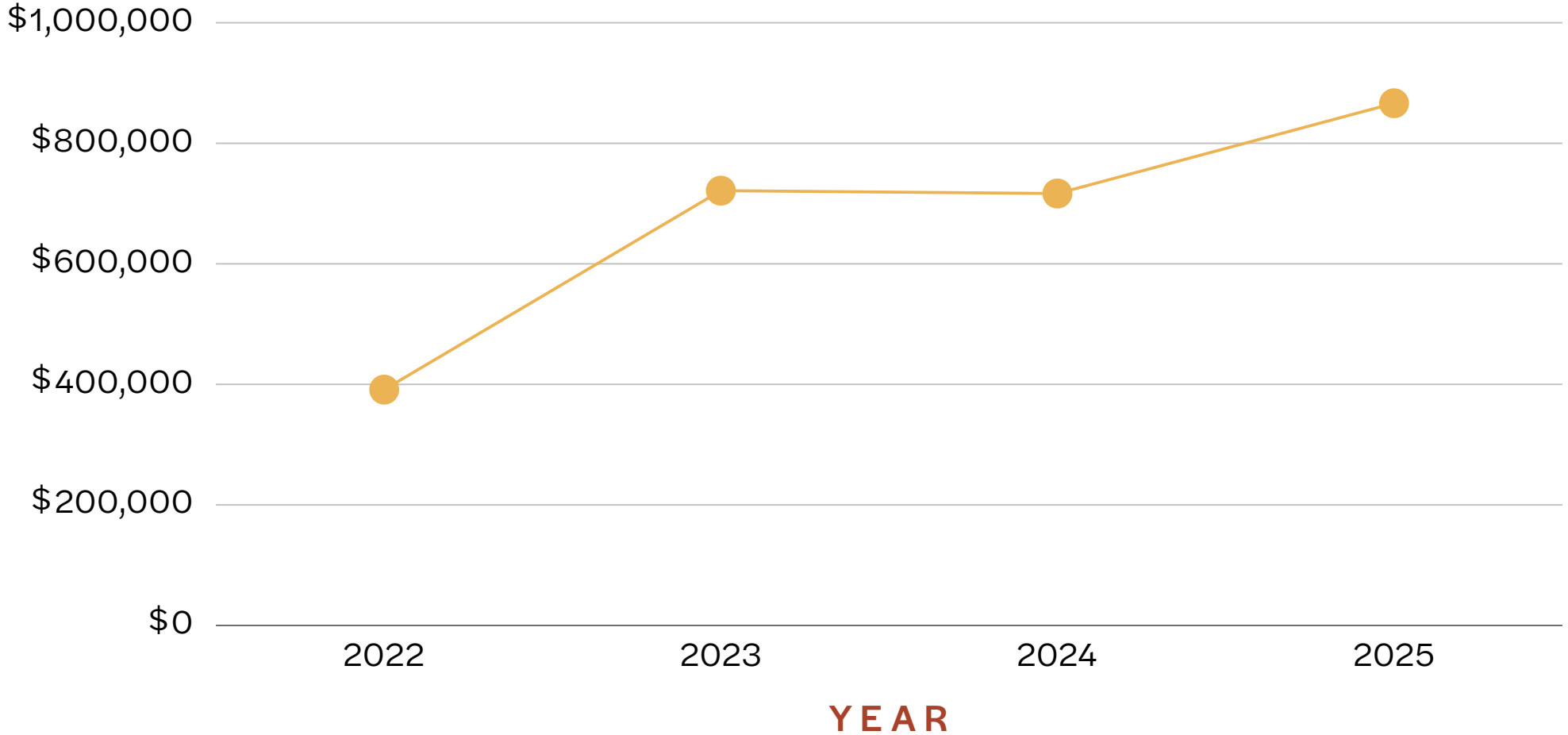
# Financial **Overview**

51-Room Hotel Offering in the Heart of Richfield



**333 N. Main Street**

## REVENUE



The property has demonstrated strong operational performance over the past four years, with revenue trending upward as demand for hospitality accommodations in the Richfield market has strengthened.



# Property **Photos**

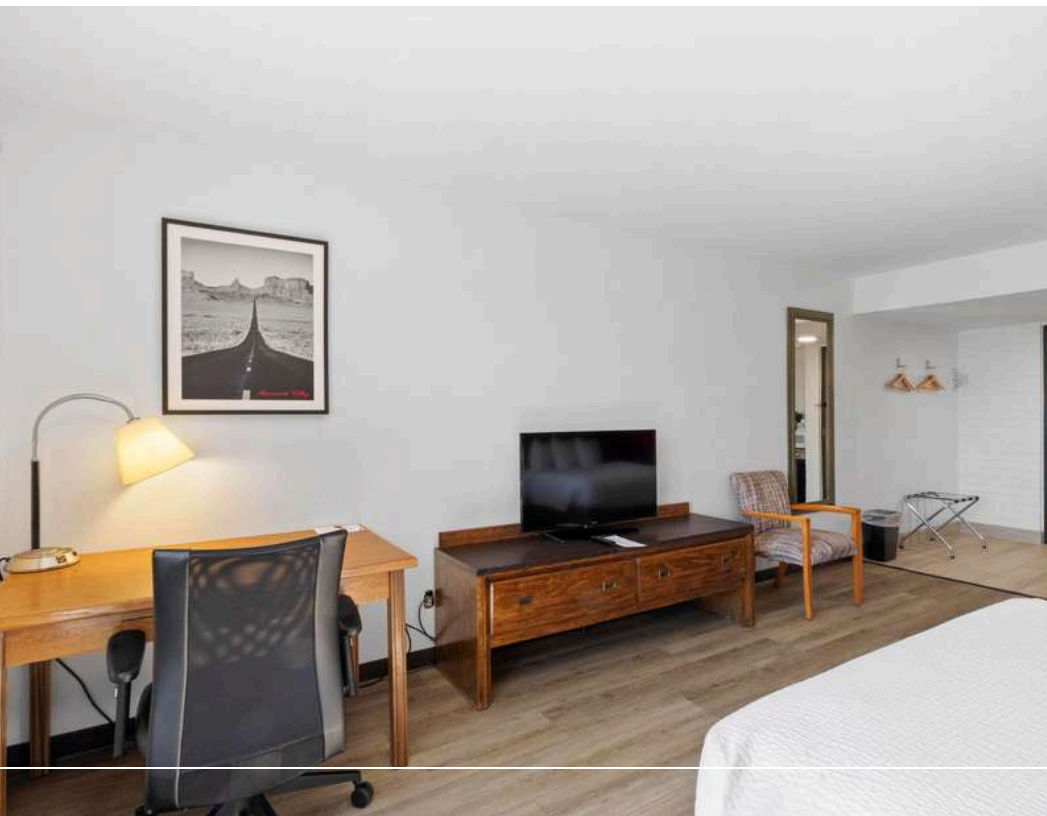
51-Room Hotel Offering in the Heart of Richfield



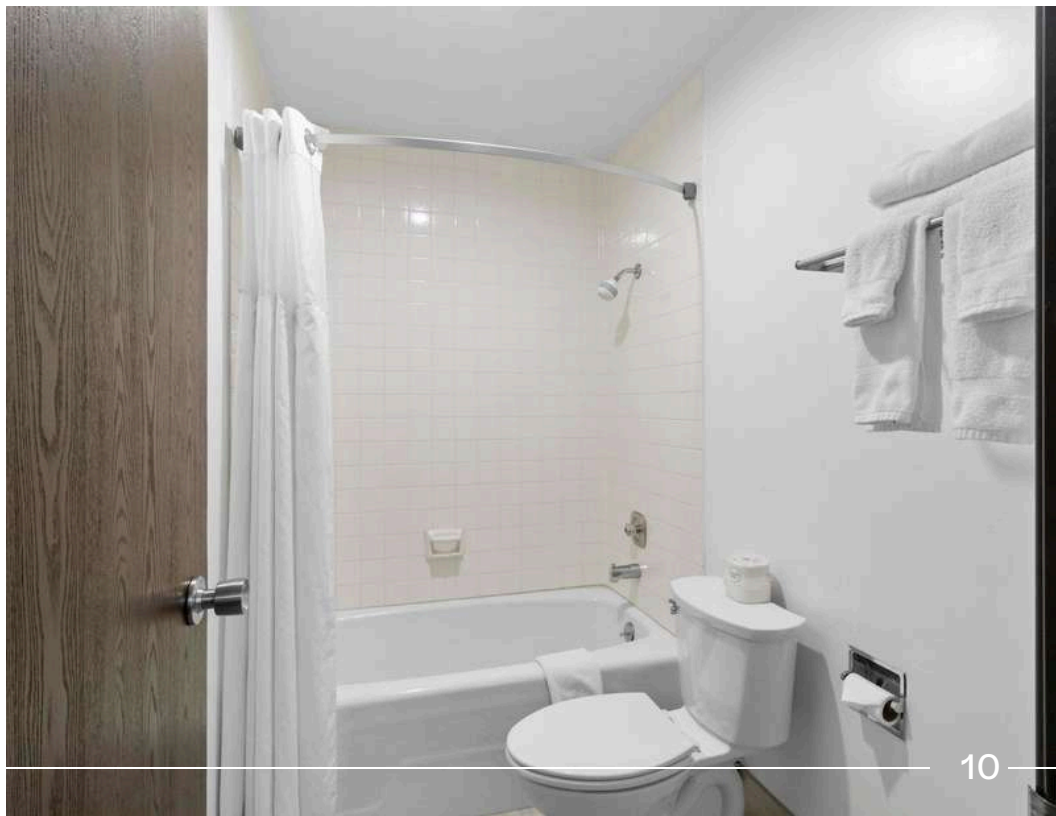
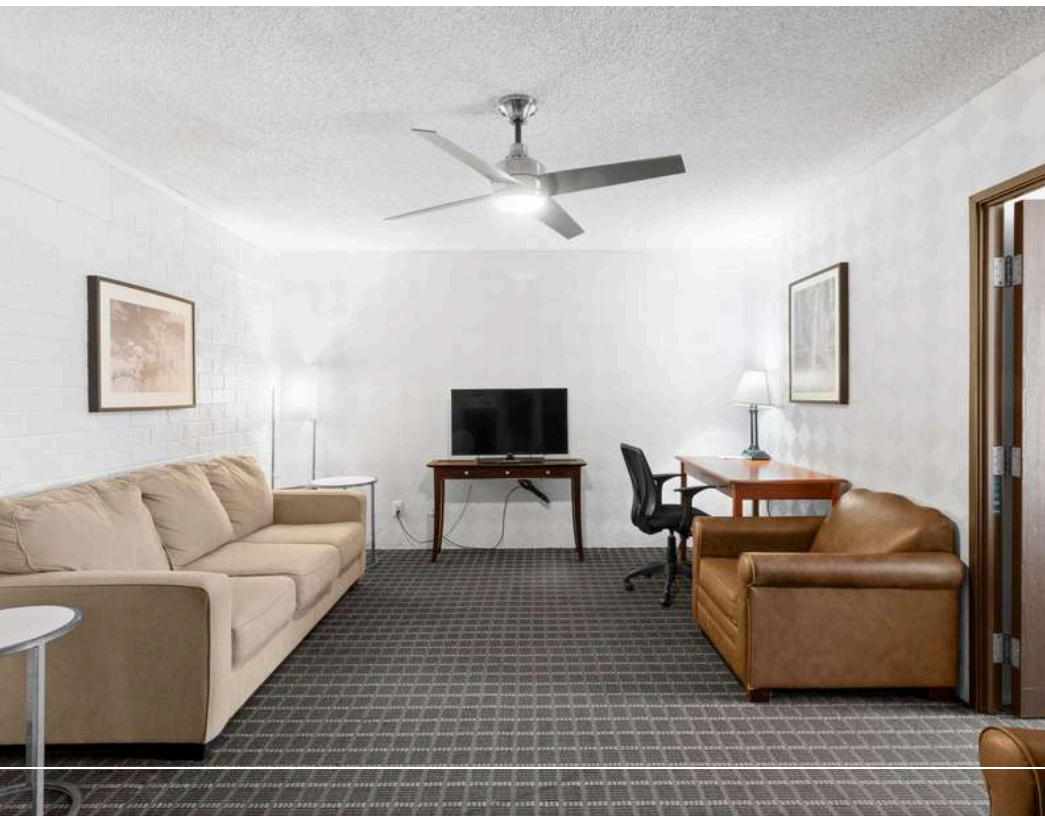
**333** N. Main Street



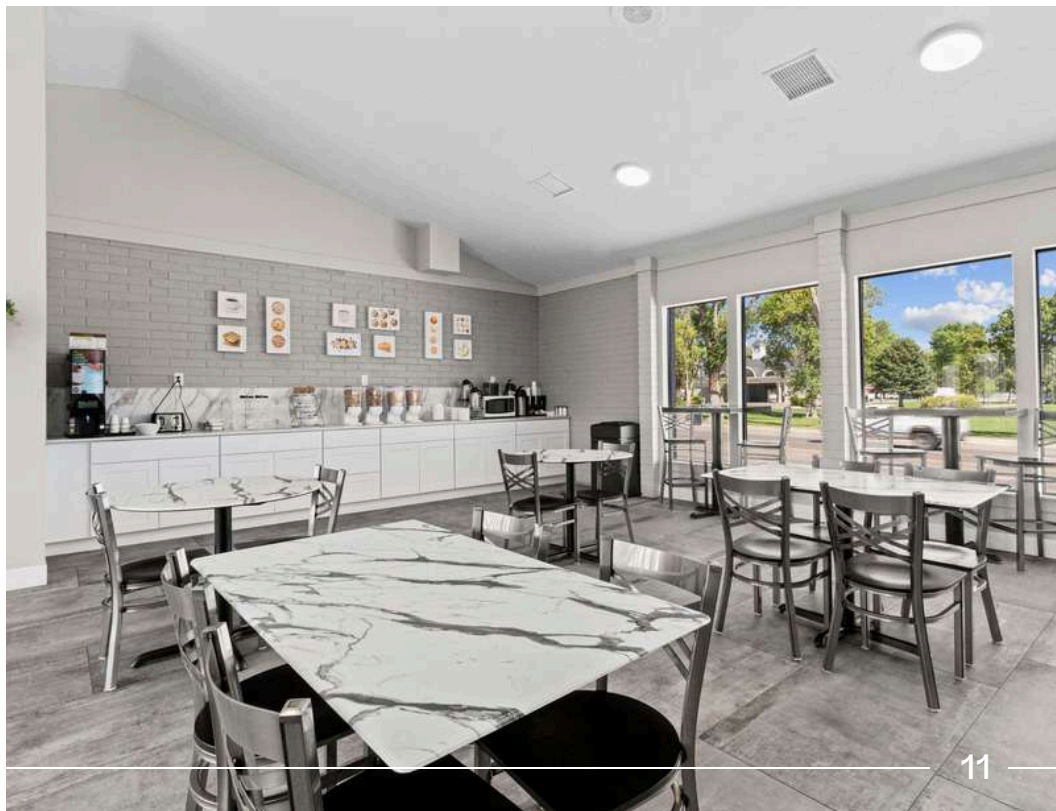
# Double Queen Suite: 335 Square Feet



# Single King Suite: 333 Square Feet

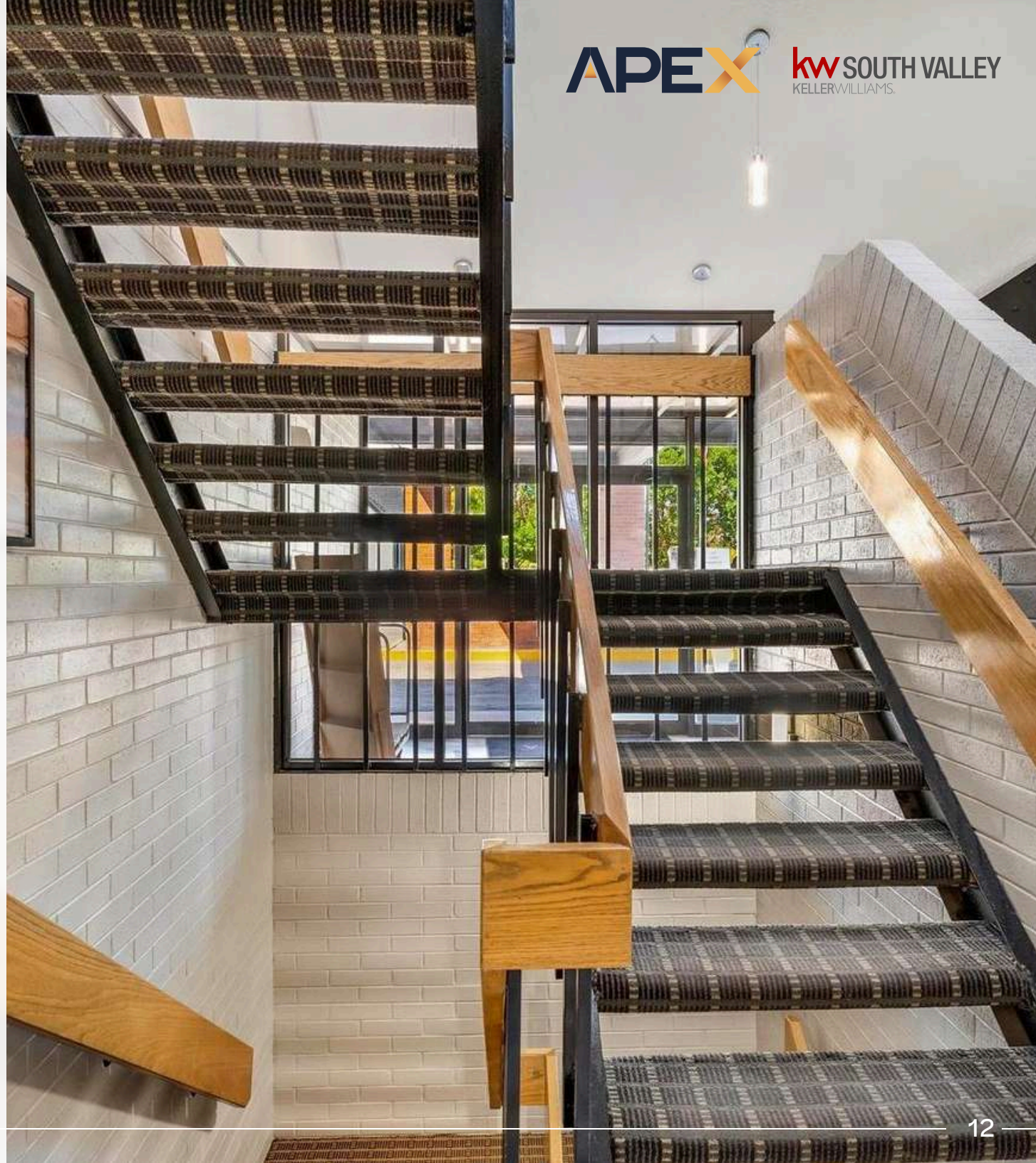


# Continental Breakfast Area



Whether you're stopping by or staying to visit Utah's celebrated parks, you'll appreciate conveniences like a gym, pool, and well-appointed guest rooms at Ramada by Wyndham Richfield UT.

Located off I-70, we're just one mile from events at Sevier Valley Center and 24 miles from Native American artifacts and petroglyphs at Fremont Indian State Park and Museum. You'll be driving distance from the stunning natural beauty and epic hiking trails of Capitol Reef National Park, Bryce Canyon National Park, and Zion National Park.





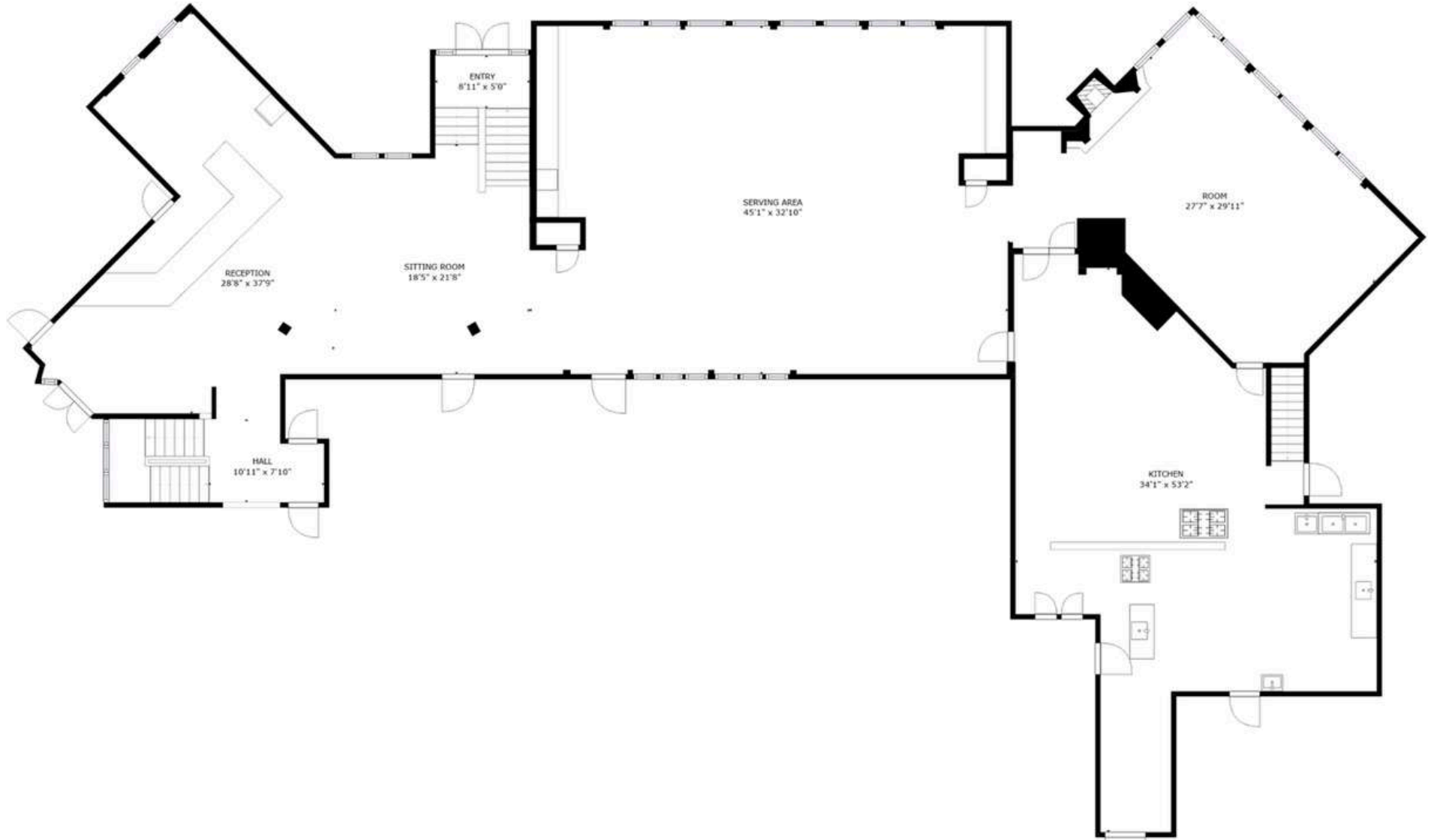
# Floor Plans

51-Room Hotel Offering in the Heart of Richfield



**333 N. Main Street**

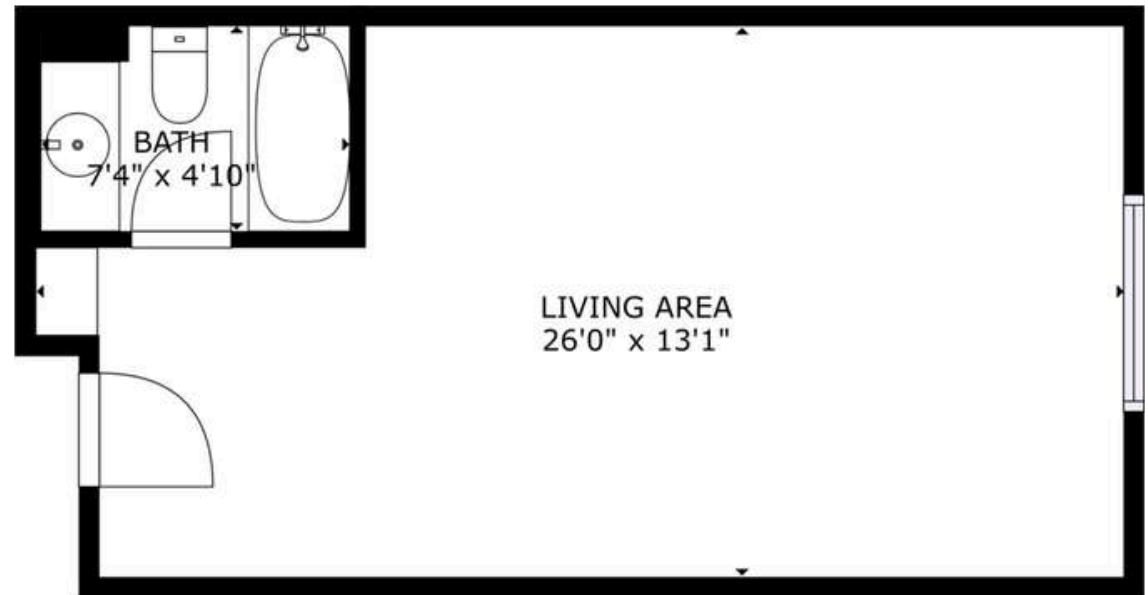
4,619 Square Feet



### Double Queen Suite Floor Plan



### Single King Suite Floor Plan





# Amenities **Package**

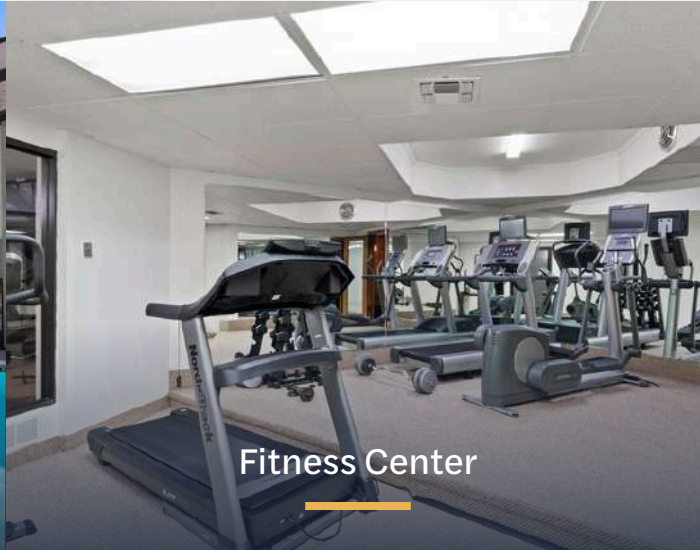
51-Room Hotel Offering in the Heart of Richfield



**333** N. Main Street



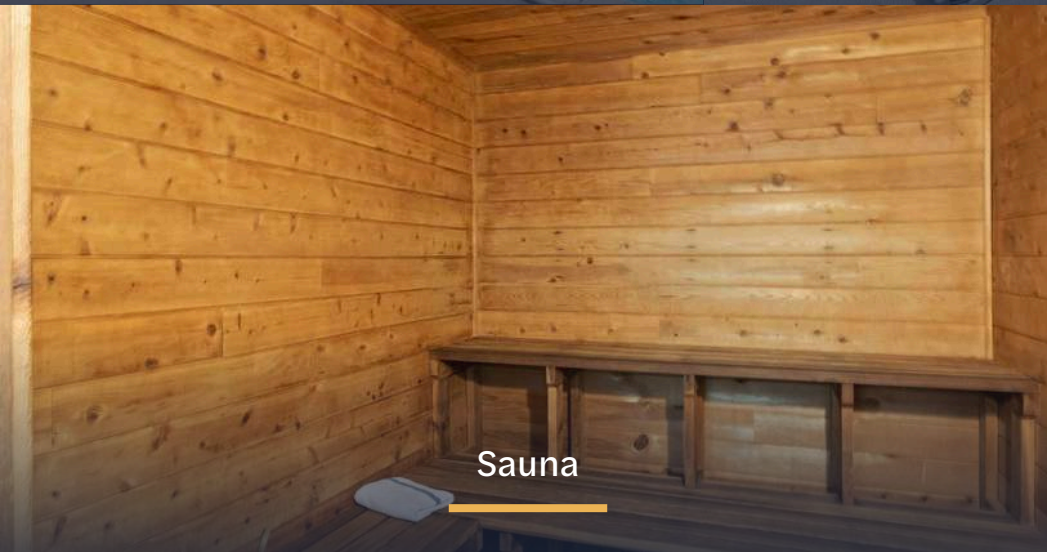
Outdoor Swimming Pool



Fitness Center



Continental Breakfast Area



Sauna



Event Facilities



# Location **Overview**

51-Room Hotel Offering in the Heart of Richfield

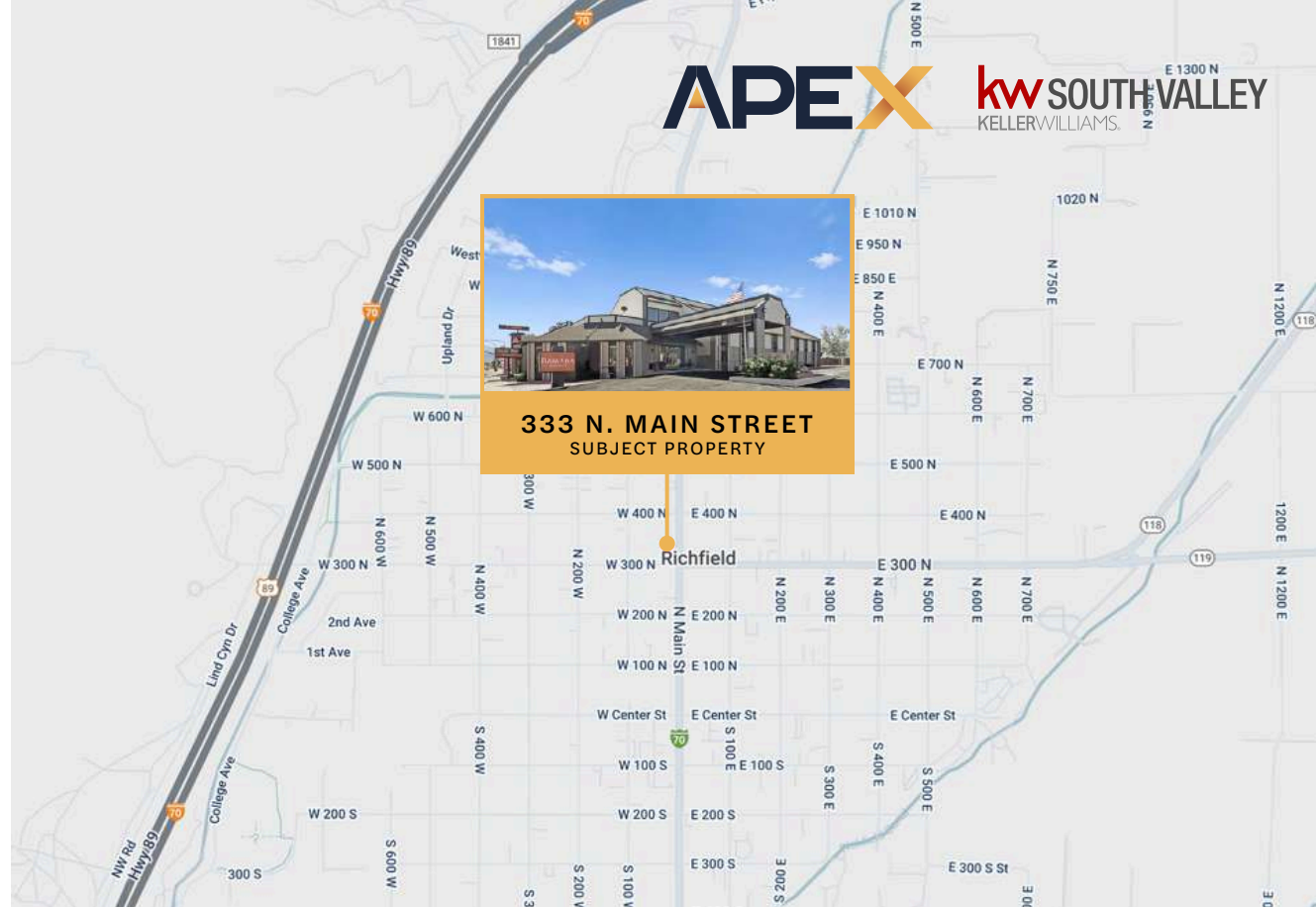


**333 N. Main Street**



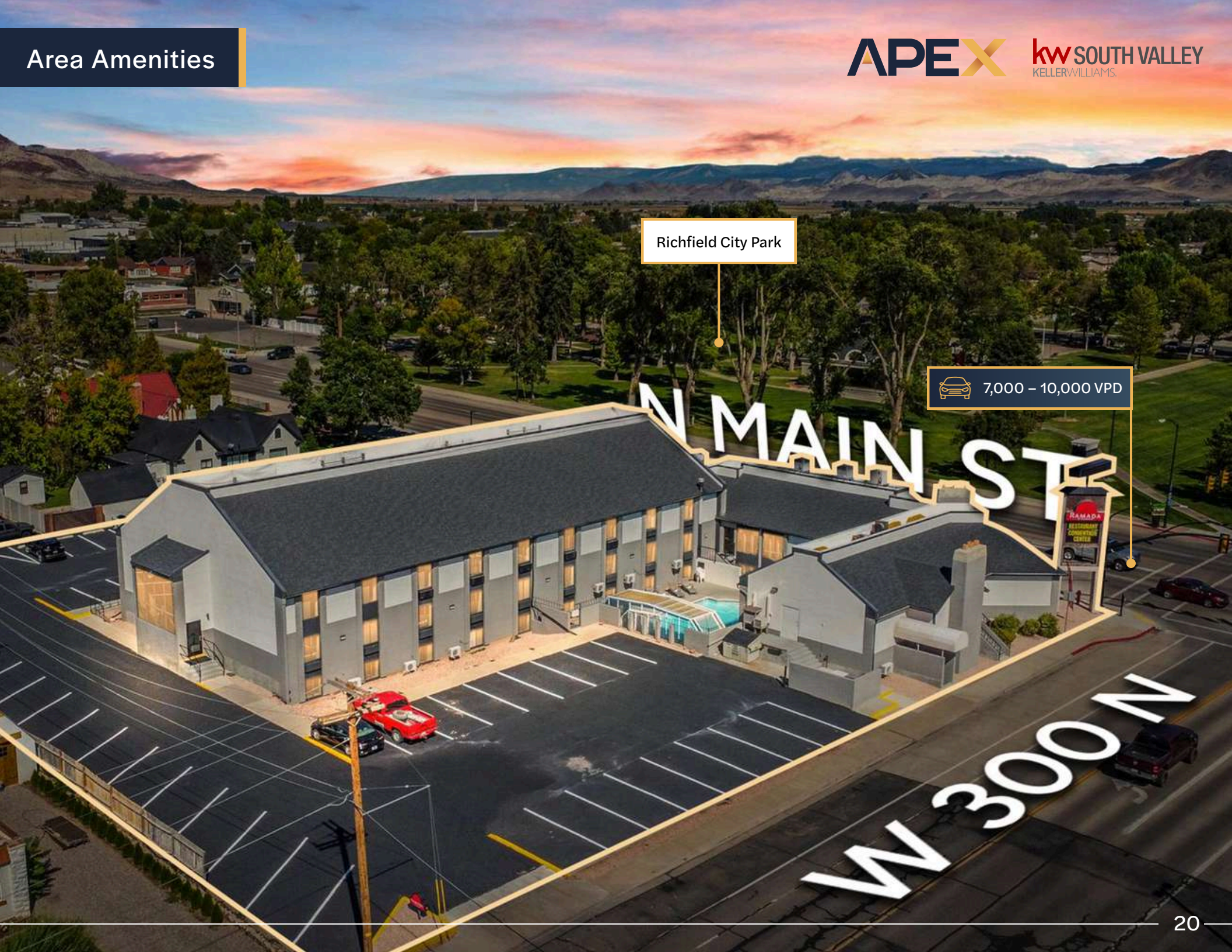
Known as the hub of Central Utah, Richfield is the largest city for more than a hundred miles and is an amenity-rich home base for exploring Central Utah's sights and rugged outdoor recreation.

It is home to campuses for both Snow College and Utah State University, as well as plenty of hotels, restaurants and a historic Main Street packed with local shops. Its central location provides easy access to nearby natural hot springs, Fremont Indian petroglyphs, red rock national park wonders, ancient lava tubes and aspen stands, and one of the country's best ATV trails.



Richfield City Park

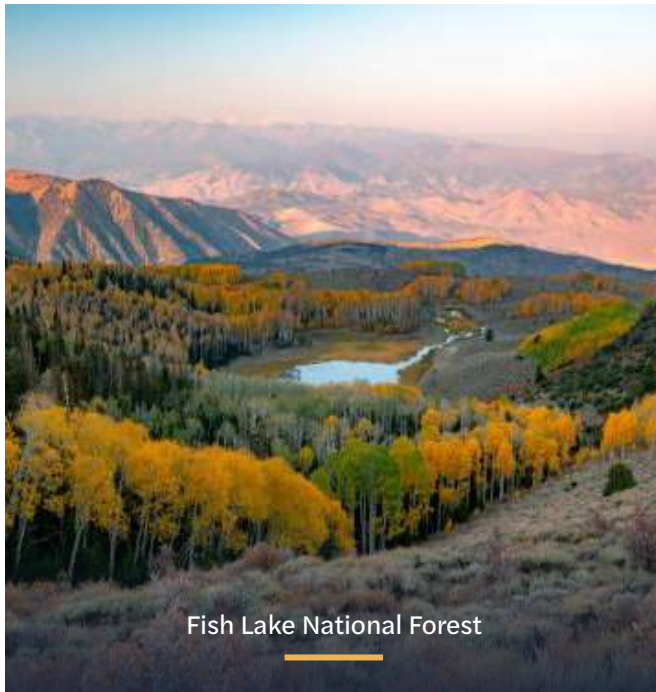
 7,000 - 10,000 VPD



**Richfield is the county seat of Sevier County, located in West Central Utah. It is the largest city in the county and lies in a fertile valley surrounded by beautiful red rock mountains and snow covered peaks.**

The county can be best described as “rural diversified” due to the convergence of agricultural, retail and industrial activities. Part of Richfield’s great appeal is its small size. With a population of 7,111 people, residents can enjoy a quality of life free from congestion, pollution and noise. Yet, even for a community of this size, residents enjoy varied shopping, restaurants and cultural activities.

Richfield is part of Panoramaland, and is a popular thoroughfare to several nearby National Parks and Forests, all providing abundant recreational activities. The area has been long known for its outdoor recreational opportunities, such as hiking, fishing and hunting. Mountain biking and All Terrain Vehicle (ATV) riding events have recently added to the area’s popularity.



Fish Lake National Forest



Snow College Richfield Campus



Mystic Hot Springs

Snow College is a public community college in Ephraim, Utah. It offers certificates and associate degrees in a number of areas, along with bachelor's degrees in music and software engineering and a four-year nursing program. Snow College is part of the Utah System of Higher Education. The college offers associate degrees and certificates. It also offers bachelor's degrees in software engineering and commercial music.



Snow College athletic teams, known as the Badgers, are consistently highly ranked; its football team went undefeated and won the National Junior College Championship in 1985, with the team inducted into the NJCAA Hall of Fame in 2010, and finished #2 in 2006. Along with football, Snow College participates in women's volleyball, men's and women's soccer, men's and women's basketball, men's and women's wrestling, softball, and rodeo.



**1888**  
ESTABLISHED



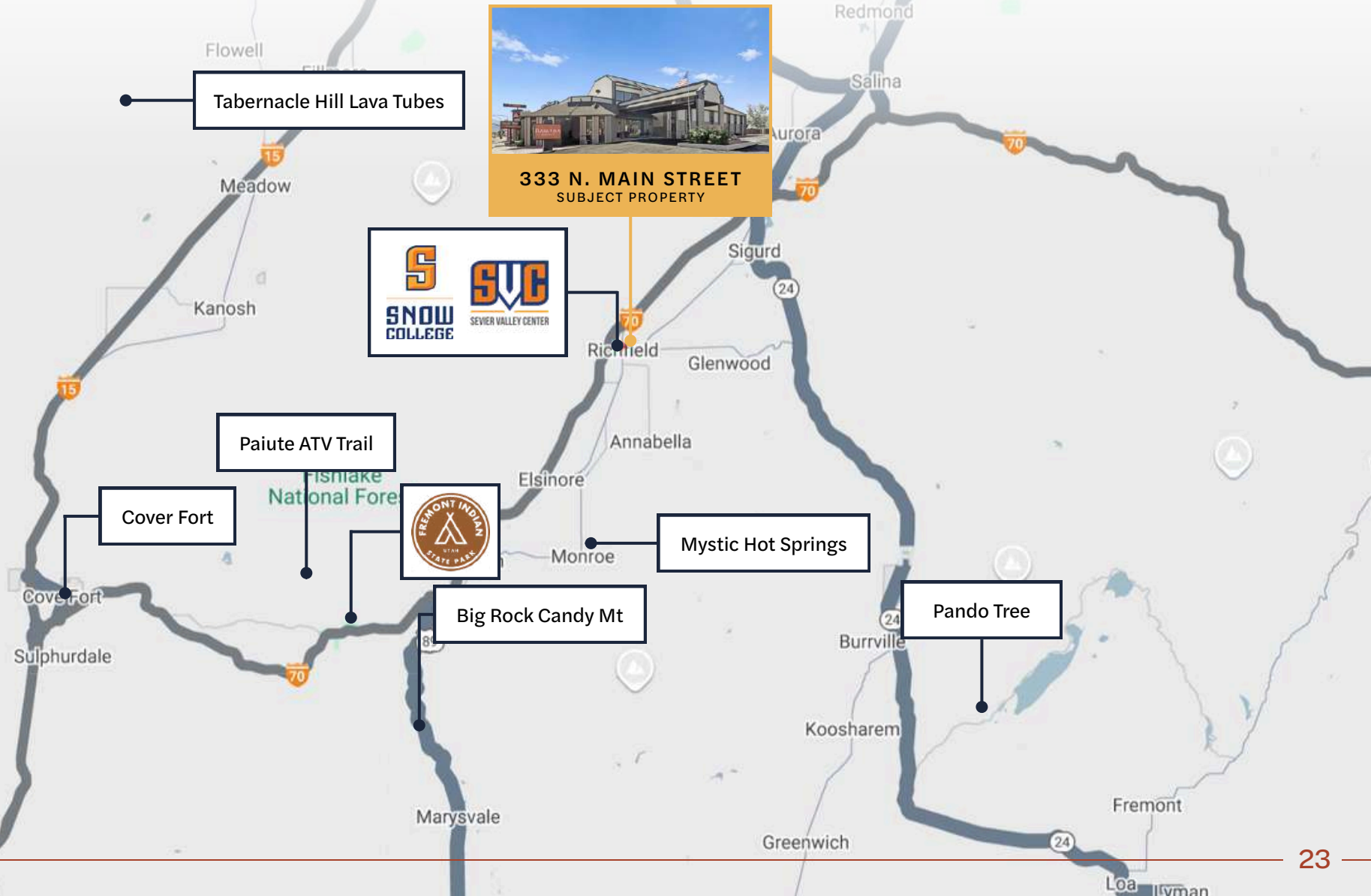
**5,900**  
STUDENTS



**115**  
FACULTY



Its central location provides easy access to nearby natural hot springs, Fremont Indian petroglyphs, red rock national park wonders, ancient lava tubes and aspen stands, and one of the country's best ATV trails.





**TRENTON BRIGHT**  
**Team Lead**

contact@apex-cre.com  
UT License: 7961776



**JON ROBINSON**  
**Listing Contact**

(801) 518-4491  
jon@apex-cre.com

The information contained in this Offering Memorandum is proprietary and strictly confidential. It has been prepared by Apex Commercial Real Estate Services, operating under KW Commercial, and is intended solely for review by the party receiving it directly from Apex Commercial Real Estate Services or KW Commercial. This Offering Memorandum may not be reproduced, distributed, or made available to any other person or entity without the prior written consent of Apex Commercial Real Estate Services.

By accepting and reviewing this Offering Memorandum, the recipient agrees to hold and treat all information contained herein in the strictest confidence. If the recipient does not wish to pursue the subject property, this Offering Memorandum and any related materials should be returned to Apex Commercial Real Estate Services.

This Offering Memorandum has been prepared to provide summary, unverified financial and physical information regarding the subject property and to establish only a preliminary level of interest among prospective purchasers. The information contained herein is not a substitute for a thorough due diligence investigation. Apex Commercial Real Estate Services and KW Commercial have not made any independent investigation and make no warranty or representation with respect to the accuracy or completeness of the information contained herein. This includes, but is not limited to, the income or expenses of the property, projected financial performance, the size or square footage of the property and improvements, the presence or absence of environmental conditions (including contaminants, PCBs, or asbestos), compliance with local, state, or federal regulations, the physical condition of the property, or the financial condition or business prospects of any tenant or occupant.

The information contained in this Offering Memorandum has been obtained from sources believed to be reliable; however, neither Apex Commercial Real Estate Services nor KW Commercial has verified such information and makes no representations or warranties as to its accuracy or completeness.

All prospective purchasers must take appropriate measures to verify all information contained herein. Prospective purchasers shall be responsible for their own costs and expenses associated with investigating the property. Buyers are strongly encouraged to conduct their own independent due diligence and seek advice from qualified professionals, including legal, financial, tax, engineering, and environmental advisors, regarding any matters related to the property. Apex Commercial Real Estate Services and KW Commercial act solely as real estate marketing agents and intermediaries between buyers and sellers and are not qualified to provide legal, accounting, engineering, or other professional advice.

Any rent or income information contained in this Offering Memorandum, other than actual historical collections where expressly stated, represents projections or estimates that may or may not be achieved. Apex Commercial Real Estate Services and KW Commercial make no representations regarding the likelihood of such projections being realized. Prospective purchasers should conduct their own independent analysis regarding the potential financial performance of the property, including any applicable local, state, or federal laws that may affect rental income or property operations.

