

SALE

5603 STEWART ST,
5603 Stewart St, Milton, FL 32570



PROPERTY DESCRIPTION

Free standing Office/ Retail building on corner lot in Milton, FL with an AADT of 20,000. This location allows for 3-5 offices depending on need, conference room, two bathrooms, 2 break rooms, utility room (washer/dryer hookup) and lots of additional storage. The building has the capability of allowing for a separation from the front and the back with rear private access and front private access. Location was previously a dental office. Demographics within a 5-mile radius include a Total Population of 56,102 and an Average Household Income of \$97,942

PROPERTY HIGHLIGHTS

- Corner Parcel. AADT 20,000. 15 Parking Spaces. 5 Mile Total Population of 56,102 & Avg. HHI of \$97,942

OFFERING SUMMARY

Sale Price:	\$275,000
Number of Units:	1
Lot Size:	0.18 Acres
Building Size:	2,088 SF

DEMOGRAPHICS	1 MILE	3 MILES	5 MILES
Total Households	2,264	9,625	20,287
Total Population	5,752	24,622	56,102
Average HH Income	\$74,250	\$92,844	\$97,942

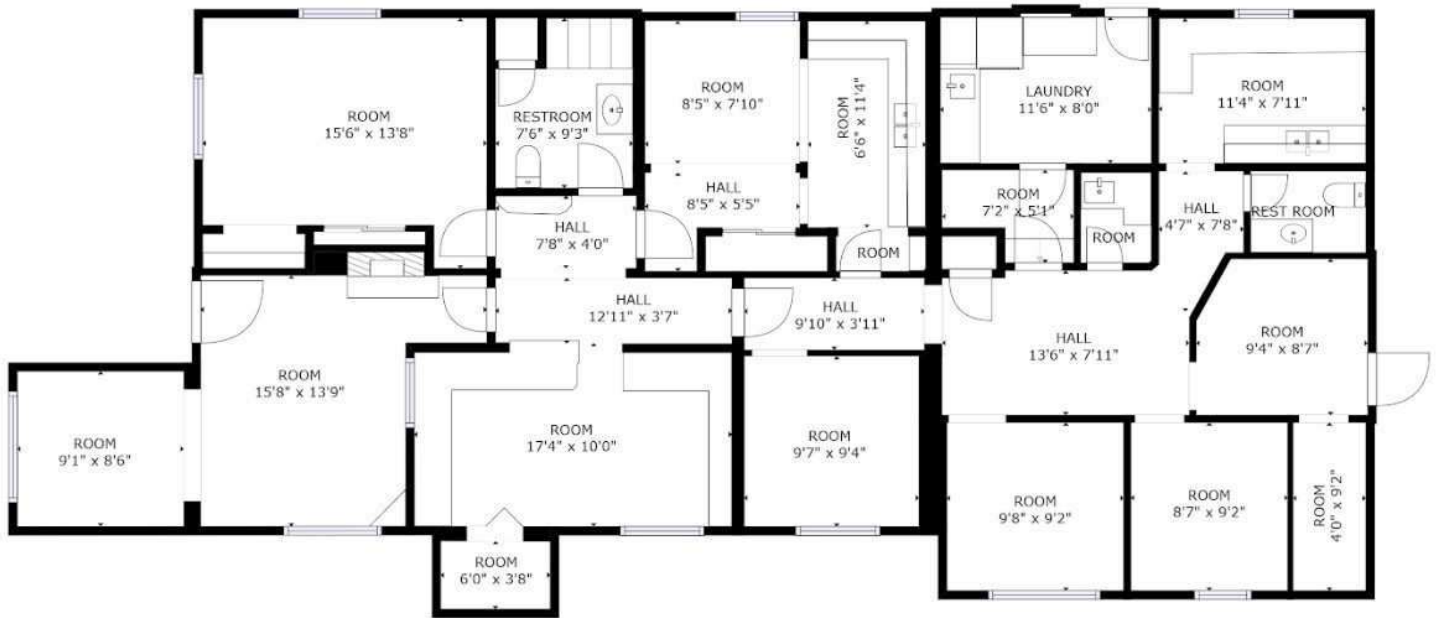
Melissa Glyptis Simpson
850 733 6532



COLDWELL BANKER
COMMERCIAL
REALTY

SALE

5603 STEWART ST,
5603 Stewart St, Milton, FL 32570



Melissa Glyptis Simpson
850 733 6532



COLDWELL BANKER
COMMERCIAL
REALTY

SALE

5603 STEWART ST,
5603 Stewart St, Milton, FL 32570



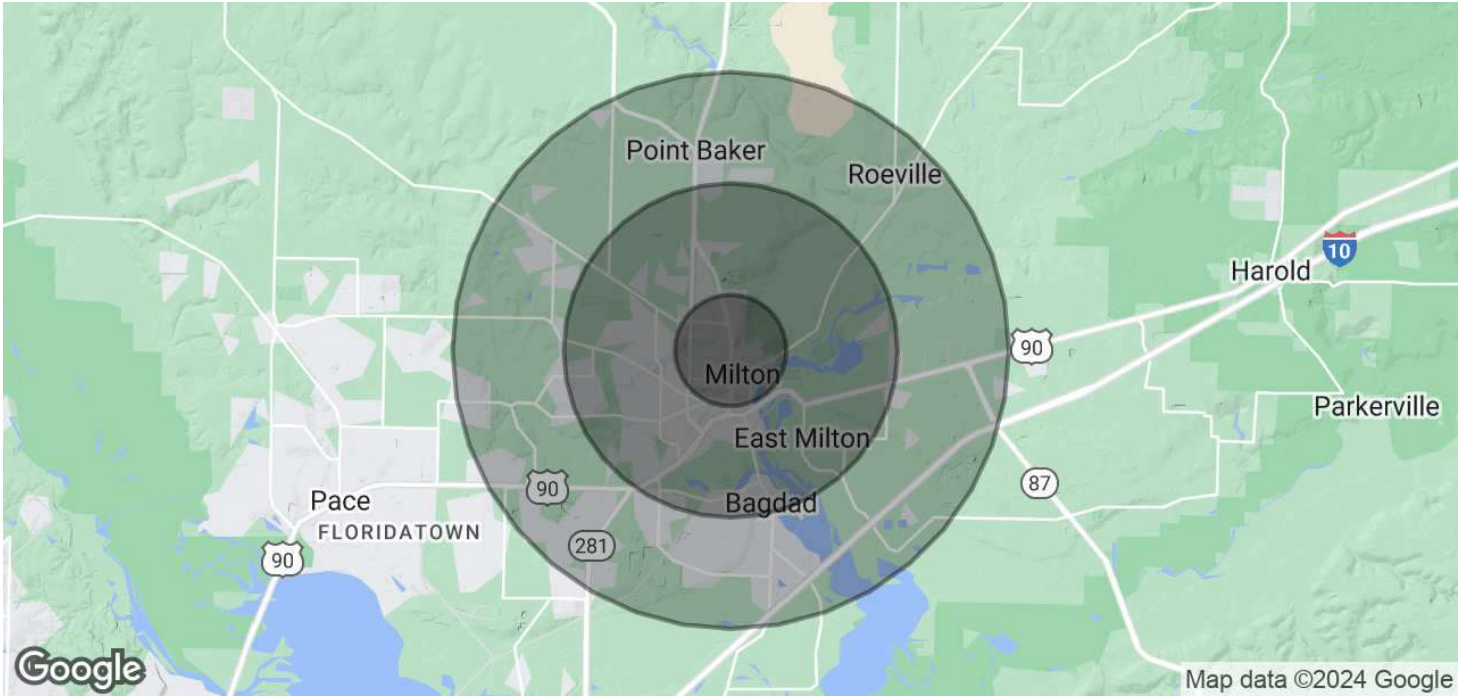
Melissa Glyptis Simpson
850 733 6532



COLDWELL BANKER
COMMERCIAL
REALTY

SALE

5603 STEWART ST,
5603 Stewart St, Milton, FL 32570



POPULATION

	1 MILE	3 MILES	5 MILES
Total Population	5,752	24,622	56,102
Average Age	40	41	41
Average Age (Male)	39	40	40
Average Age (Female)	42	43	42

HOUSEHOLDS & INCOME

	1 MILE	3 MILES	5 MILES
Total Households	2,264	9,625	20,287
# of Persons per HH	2.5	2.6	2.8
Average HH Income	\$74,250	\$92,844	\$97,942
Average House Value	\$206,251	\$287,165	\$281,637

TRAFFIC COUNTS

/day

* Demographic data derived from 2020 ACS - US Census

Melissa Glyptis Simpson
850 733 6532



COLDWELL BANKER
COMMERCIAL
REALTY