

20340

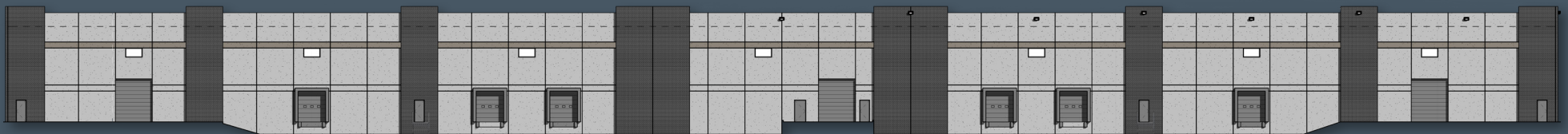
GRASSY BRANCH



WALLS ARE VERTICAL



NORTH ELEVATION



SOUTH ELEVATION

±80,000 SF DIVISIBLE TO ±26,000 SF

20340 GRASSY BRANCH RD, WESTFIELD, IN 46074



BUILDING HIGHLIGHTS

Building Size ±80,000 SF

Divisible to ±26,000 SF

Site Size 8.92 Acres

Parking Spaces ±116

Drive-in Doors 3 (12' x 14')

Dock Doors 6 (7'x8') Mechanical Levelers with 9' x 10' Dock Seals, Lights and Dock Bumpers (Additional Docks Can be Added)

Clear Height 28'

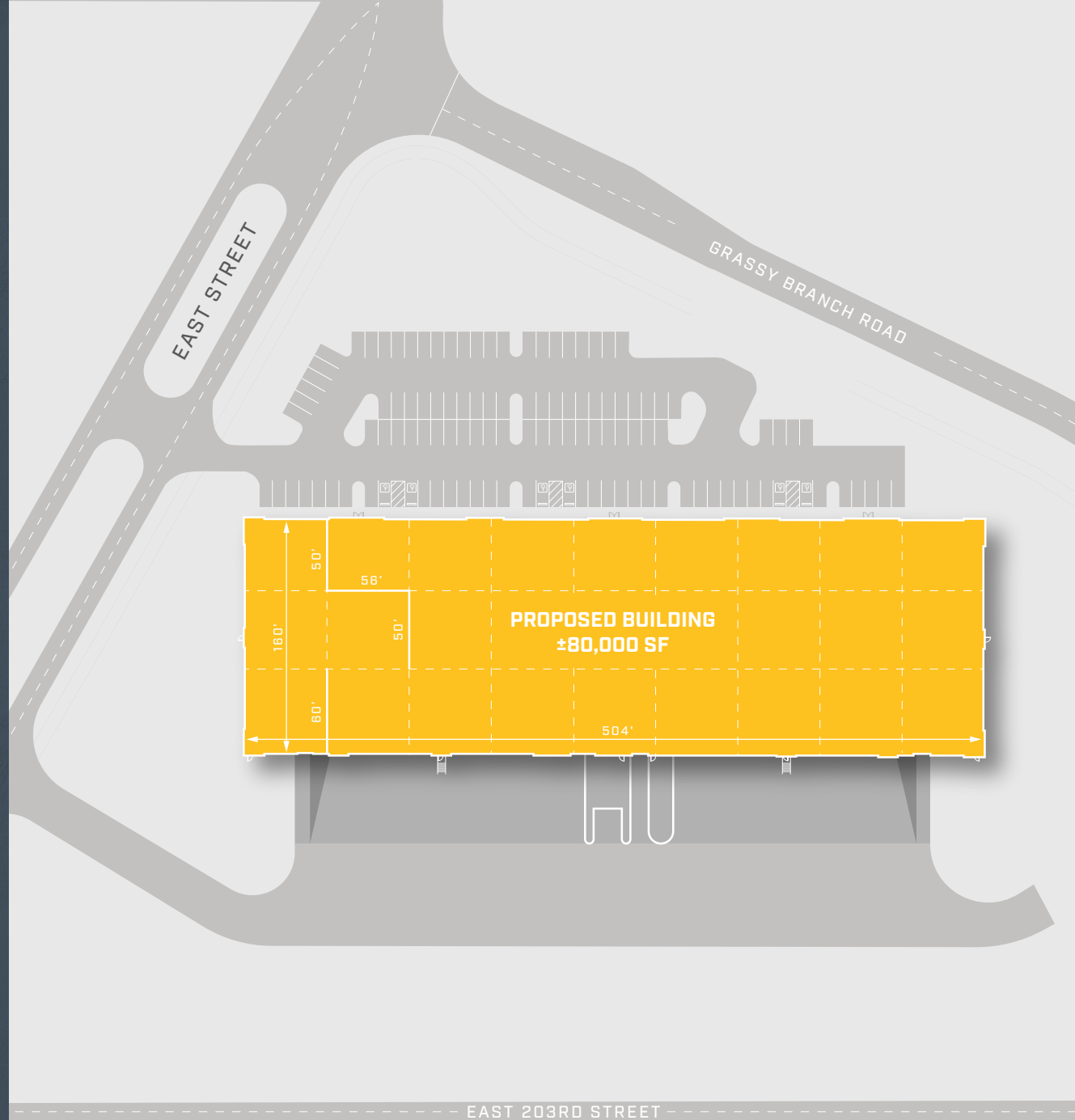
Truck Court 130'

Building Dimensions ±504' Wide x 160' Deep

Floor 6" Slab - 4,000PSI
Unreinforced in the First Two Bays, WWF
Reinforcing in the Speed Bays

Power 800 Amps at 480 Volts
Expandable to 1,200 Amps

Estimated Availability June/July 2026



AREA AMENITIES

32

Restaurants

9

Recreation

6

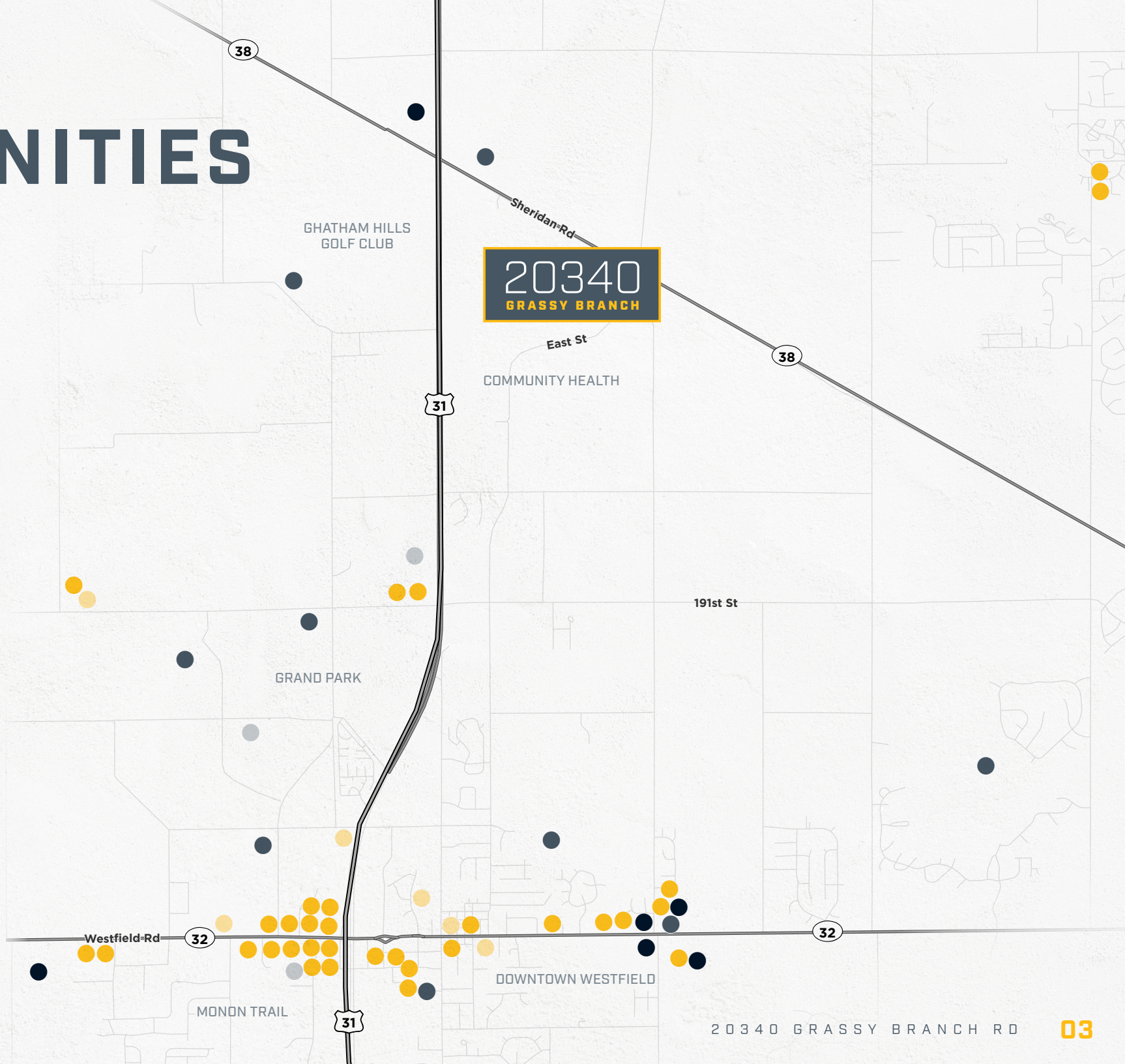
Retail

6

Entertainment

3

Hotels



**FOR MORE INFORMATION,
PLEASE CONTACT**

RYAN BAKER

Executive Managing Director
+1 317 352 5428
ryan.baker@cushwake.com

MICHAEL WEISHAAR

Vice Chair
+1 317 639 0494
michael.weishaar@cushwake.com

20340

GRASSY BRANCH

©2026 Cushman & Wakefield. All rights reserved. The information contained in this communication is strictly confidential. This information has been obtained from sources believed to be reliable but has not been verified. NO WARRANTY OR REPRESENTATION, EXPRESS OR IMPLIED, IS MADE AS TO THE CONDITION OF THE PROPERTY (OR PROPERTIES) REFERENCED HEREIN OR AS TO THE ACCURACY OR COMPLETENESS OF THE INFORMATION CONTAINED HEREIN, AND SAME IS SUBMITTED SUBJECT TO ERRORS, OMISSIONS, CHANGE OF PRICE, RENTAL OR OTHER CONDITIONS, WITHDRAWAL WITHOUT NOTICE, AND TO ANY SPECIAL LISTING CONDITIONS IMPOSED BY THE PROPERTY OWNER(S). ANY PROJECTIONS, OPINIONS OR ESTIMATES ARE SUBJECT TO UNCERTAINTY AND DO NOT SIGNIFY CURRENT OR FUTURE PROPERTY PERFORMANCE. COE-PM-CENTRAL- 09/11/25

