

Retail Space for Lease

209 N 11th Street

Location:

N 11th Street - Between Driggs Avenue & Roebling Street

Retail Available:

Retail A: 5,920 SF

Retail B: 2,391 SF

Retail C: 3,529 SF

Retail D: 416 SF

Frontage:

Retail A: 50 Feet on N 11th Street

Retail B: 25 Feet on N 11th Street

Retail C: 25 Feet on N 11th Street

Retail D: 20 Feet on N 11th Street

Ceiling Heights: 12 FT

Price: Upon Request

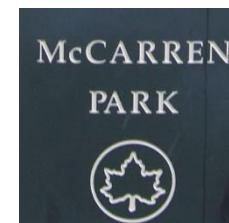
Highlights:

- Brand new Ground Floor Retail Space at the base of a Luxury Residential Building
- Over 70 Feet of Frontage along N 11th Street
- Direct proximity to McCarren Park – 1 Block Over
- Landlord can offer a Custom Build-out for Tenant
- All uses considered

Williamsburg, Brooklyn, NY



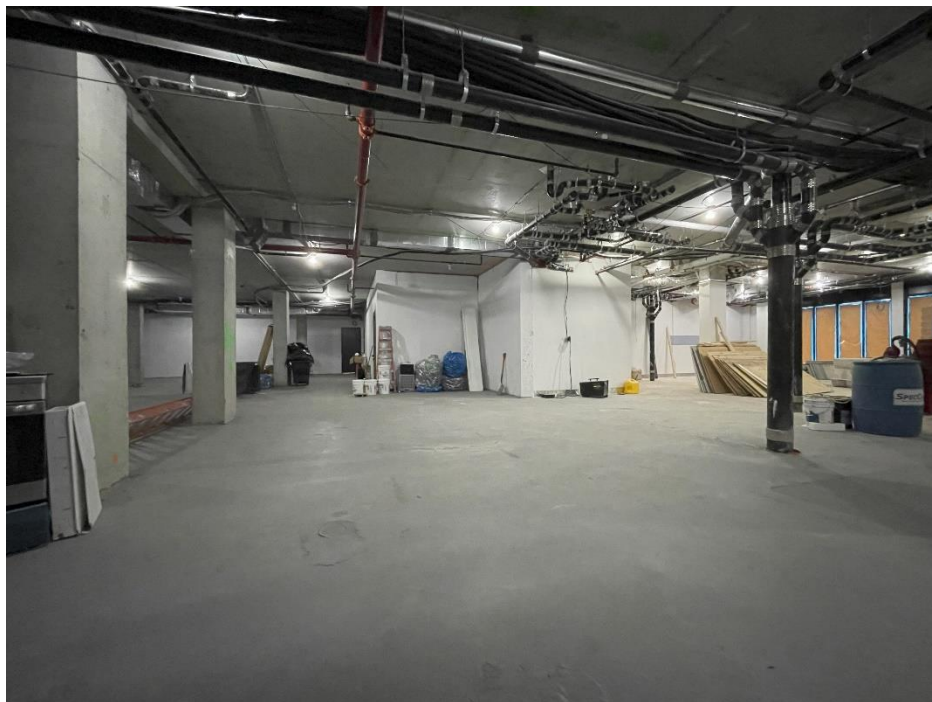
Local Attractions:



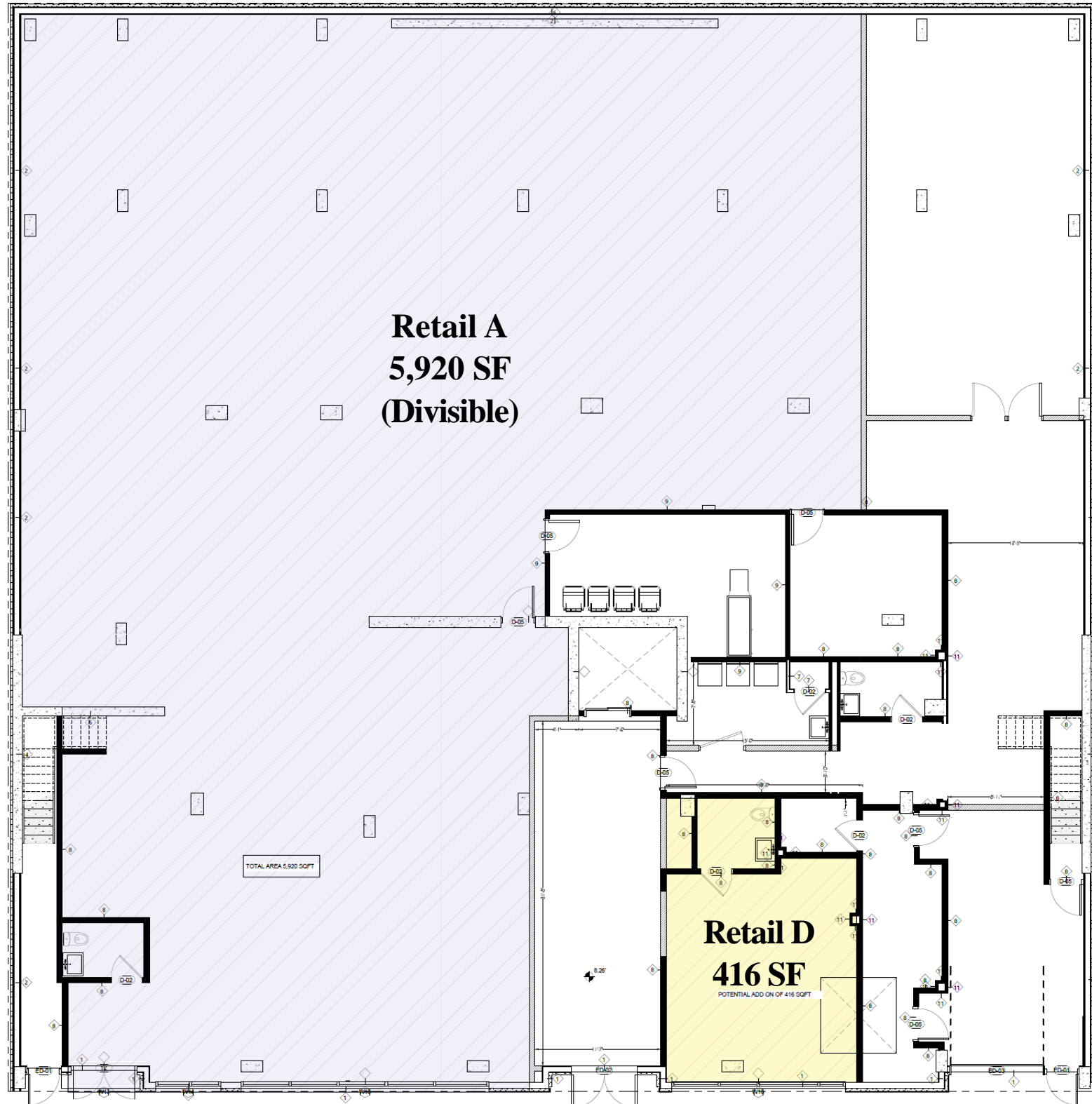
Call/Text:
516 350 2621

Ground Level Photos

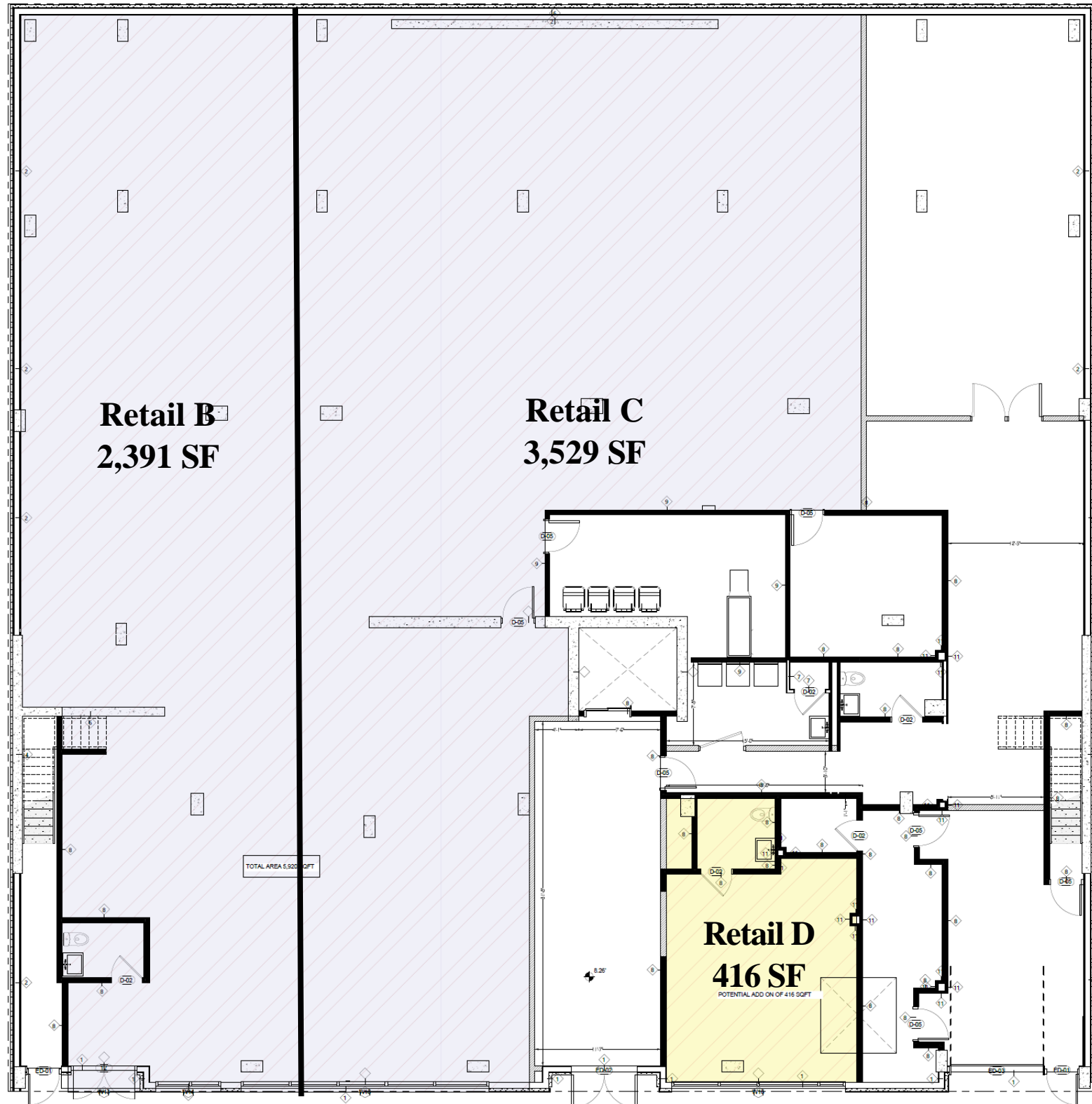
Williamsburg, Brooklyn, NY



Ground Level Floorplan



Ground Level – Potential Divisions



CONTACT

JOSH SLOAN

516-350-2621

JS@SLOAN-RE.COM