

// OFFICE BUILDING FOR LEASE



PROPERTY DESCRIPTION

The property is a commercial office building constructed in 1997. The building encompasses a total area of 30,000 square feet and is situated on a 1.68-acre lot. Offering convenient access to and from I-90, abundant free parking, and is located approximately 7 minutes from both downtown Spokane and the airport.

PROPERTY FEATURES

- Office Space: 4,500 SF -11,911 SF
- 66 Cubicles, 14 Privates Offices, a Copy/Supply Room, Breakroom, and 2 Training/Conference Rooms
- Available Space Can Be Demised
- Easy Egress & Ingress From I-90
- Abundant Free Parking
- 7 min to Downtown & 7 min to Airport
- Modified Gross

// PRESENTED BY:

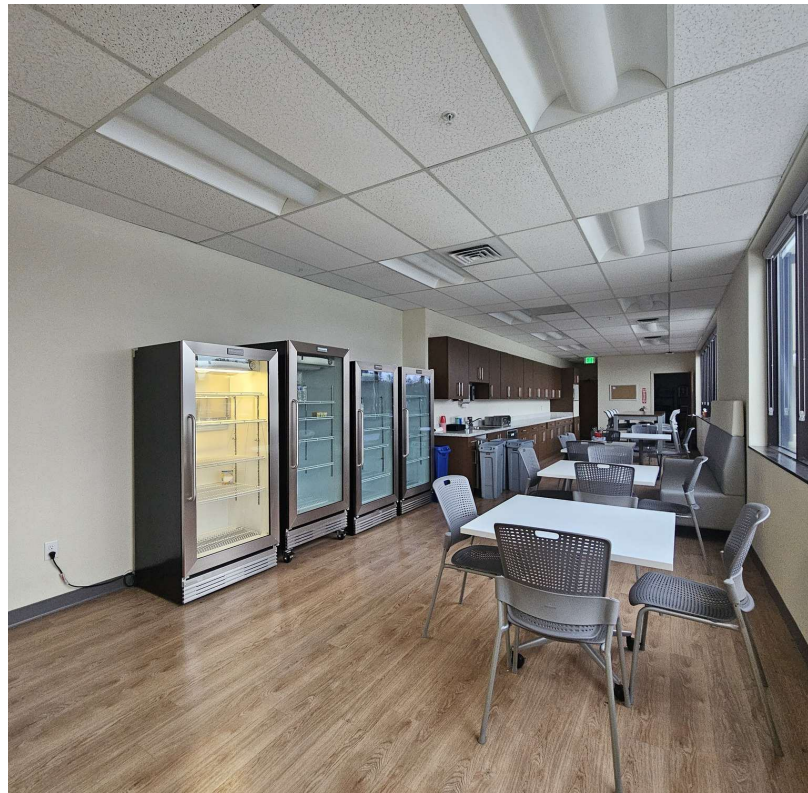
CORY BARBIERI
VICE PRESIDENT
509.344.4901
CBARBIERI@G-B.COM

SPACES	LEASE RATE	SPACE SIZE		
Suite A	\$13.75 SF/yr	4,500 - 11,911 SF		
DEMOGRAPHICS	3 MILES	5 MILES	10 MILES	
Total Households	5,052	31,283	145,404	
Total Population	10,738	69,474	350,502	
Average HH Income	\$52,464	\$51,265	\$56,303	



1628 S Windsor Dr // Spokane, WA 99224

// ADDITIONAL PHOTOS

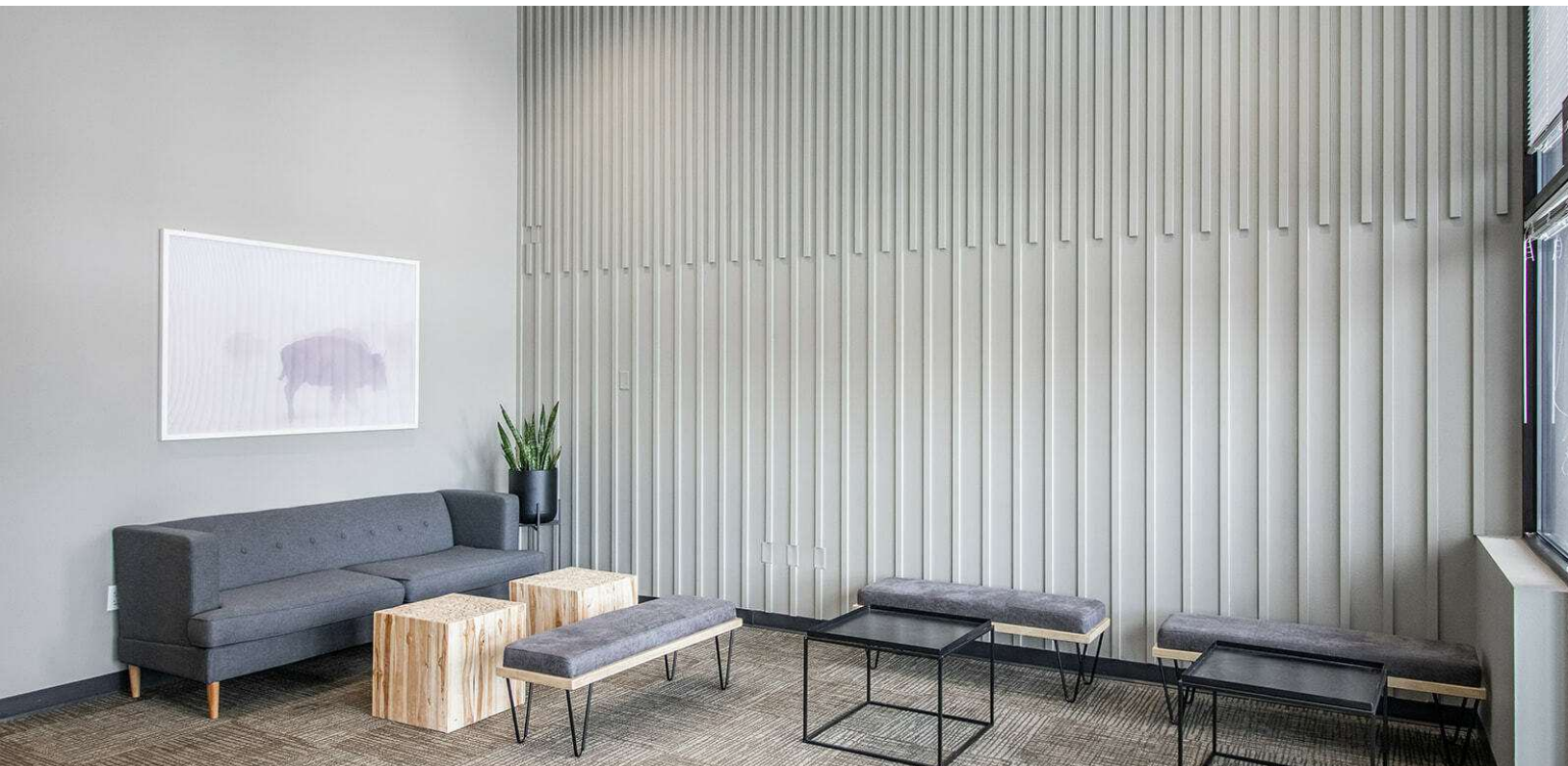


// PRESENTED BY:

CORY BARBIERI
VICE PRESIDENT
509.344.4901
CBARBIERI@G-B.COM



// ADDITIONAL PHOTOS



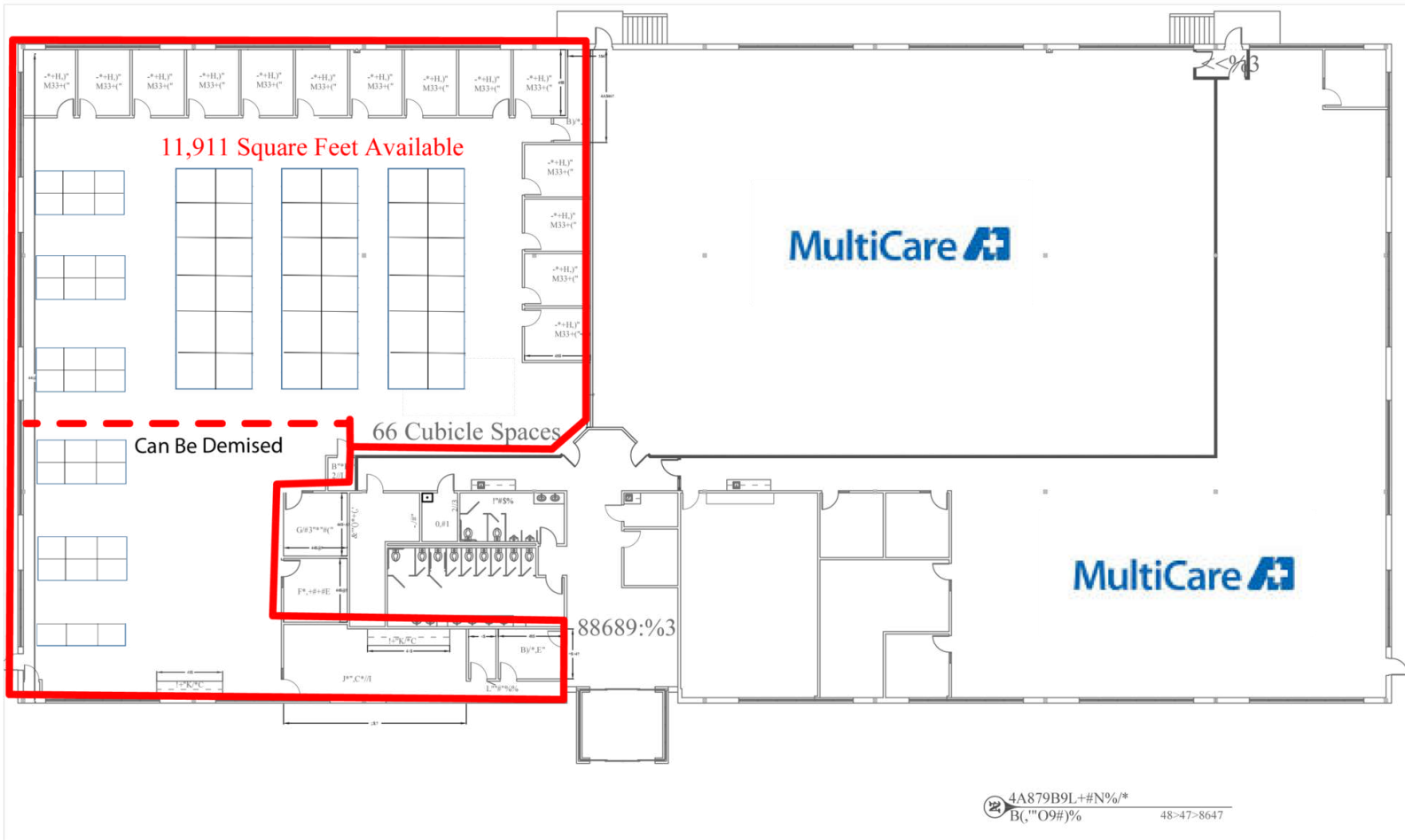
// PRESENTED BY:

CORY BARBIERI
VICE PRESIDENT
509.344.4901
CBARBIERI@G-B.COM





// SITE PLAN



// PRESENTED BY:

CORY BARBIERI

VICE PRESIDENT

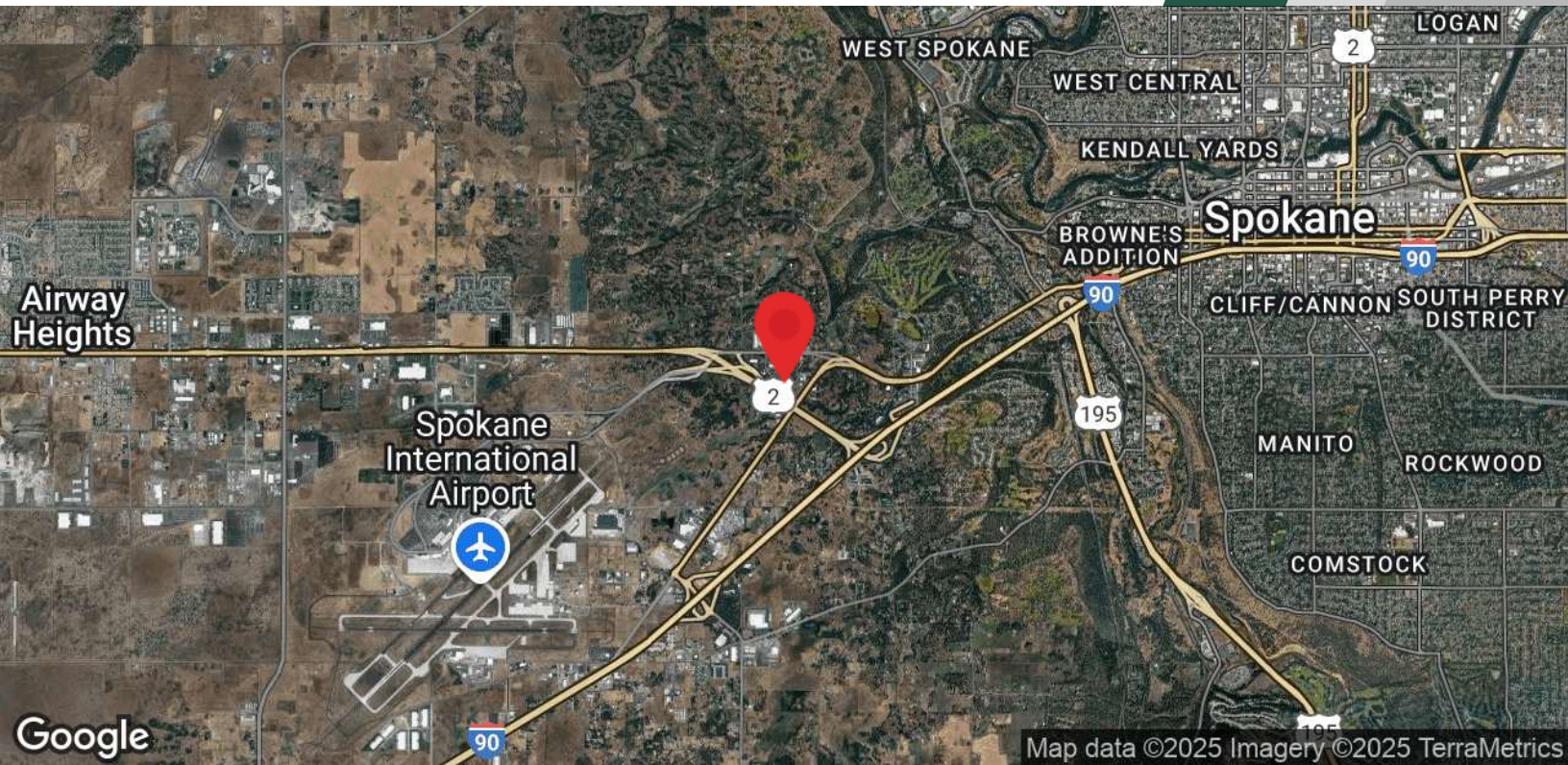
509.344.4901

CBARBIERI@G-B.COM



1628 S Windsor Dr // Spokane, WA 99224

// LOCATION MAP



// PRESENTED BY:

CORY BARBIERI

VICE PRESIDENT

509.344.4901

CBARBIERI@G-B.COM

