

LAND FOR SALE

566 COUNTY ROAD T | HAMMOND, WI 54015



101.6 Acres



County Road T



COMMERCIAL REAL ESTATE SERVICES

Jon Whitcomb Broker / Owner

1950 Northwestern Ave N #101
Stillwater, MN 55082

Cell 651.283.4884
Office 651.351.5005

Email Jon@MetroEastCRE.com
Web www.MetroEastCRE.com

FOR SALE: 101.6 Acres with I-94 Frontage

566 County Road T | Hammond, WI 54015



Property Information

Excellent visibility with easy access to I-94. Great opportunity with explosive growth currently taking place in Hammond, WI

Lot Size:	101.60 Acres
Existing Zoning:	Agricultural
Proposed Zoning:	Commercial / Industrial
County:	St. Croix County
PIDs:	1. 024-1000-10-000 2. 024-1000-40-000 3. 024-1000-60-001
PID Acreage:	1. 37.72 Acres 2. 35.00 Acres 3. 28.85 Acres
Asking Price:	\$3,300,000

- » 15.34 Miles to Downtown Hudson
- » Located at Exit 65
- » Easily converted to Commercial & Industrial Zoning
- » High traffic counts

Jon Whitcomb Broker / Owner

1950 Northwestern Ave N #101
Stillwater, MN 55082

Cell 651.283.4884
Office 651.351.5005

Email Jon@MetroEastCRE.com
Web www.MetroEastCRE.com

The information contained herein has been provided by the property owner or obtained from sources deemed reliable. Although the information is believed to be accurate, it is not guaranteed. The property is subject to price change, prior sale or lease and withdrawal from the market, without notice. Buyer is responsible to conduct its own due diligence, as this offering contains no representations or warranties.



COMMERCIAL REAL ESTATE SERVICES

FOR SALE: 101.6 Acres with I-94 Frontage

566 County Road T | Hammond, WI 54015



Jon Whitcomb Broker / Owner

1950 Northwestern Ave N #101
Stillwater, MN 55082

Cell 651.283.4884
Office 651.351.5005

Email Jon@MetroEastCRE.com
Web www.MetroEastCRE.com

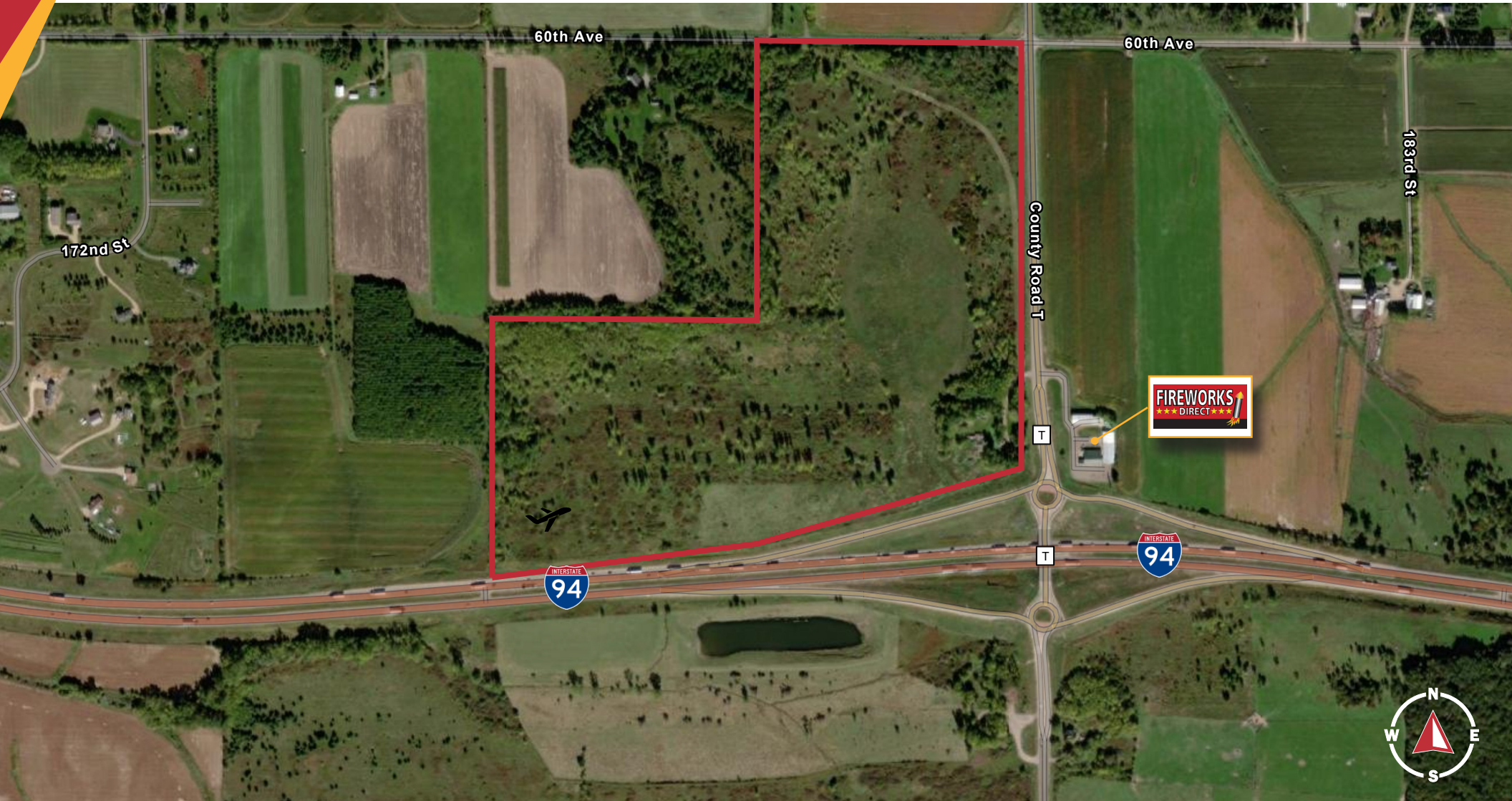
The information contained herein has been provided by the property owner or obtained from sources deemed reliable. Although the information is believed to be accurate, it is not guaranteed. The property is subject to price change, prior sale or lease and withdrawal from the market, without notice. Buyer is responsible to conduct its own due diligence, as this offering contains no representations or warranties.



COMMERCIAL REAL ESTATE SERVICES

FOR SALE: 101.6 Acres with I-94 Frontage

566 County Road T | Hammond, WI 54015



COMMERCIAL REAL ESTATE SERVICES

Jon Whitcomb Broker / Owner

1950 Northwestern Ave N #101
Stillwater, MN 55082

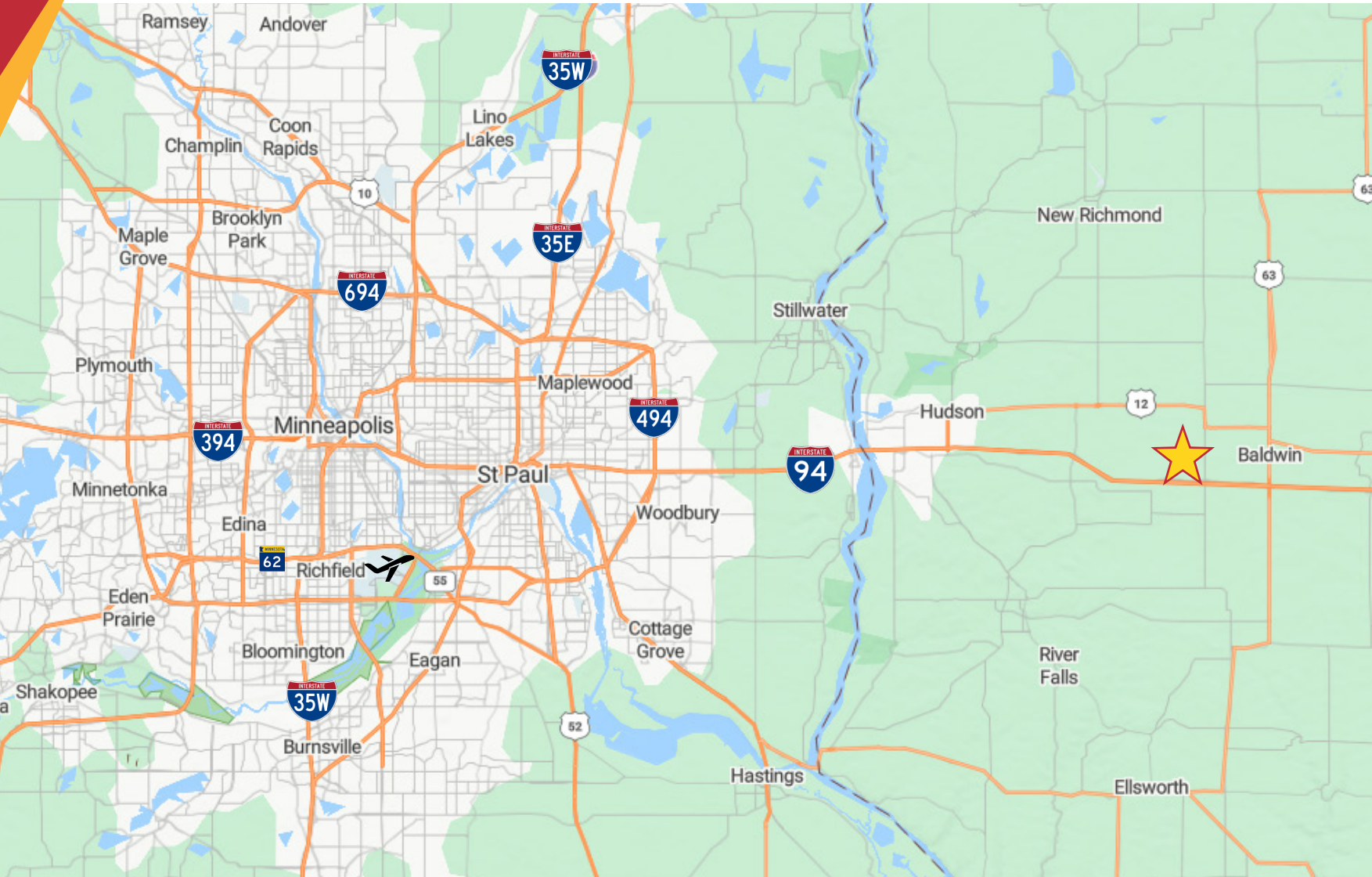
Cell 651.283.4884
Office 651.351.5005

Email Jon@MetroEastCRE.com
Web www.MetroEastCRE.com

The information contained herein has been provided by the property owner or obtained from sources deemed reliable. Although the information is believed to be accurate, it is not guaranteed. The property is subject to price change, prior sale or lease and withdrawal from the market, without notice. Buyer is responsible to conduct its own due diligence, as this offering contains no representations or warranties.

FOR SALE: 101.6 Acres with I-94 Frontage

566 County Road T | Hammond, WI 54015



Drive Times

9
9 Minutes
to Baldwin, WI

17
17 Minutes
to Hudson, WI

37
37 Minutes
to St. Paul, MN



COMMERCIAL REAL ESTATE SERVICES

Jon Whitcomb Broker / Owner

1950 Northwestern Ave N #101
Stillwater, MN 55082

Cell 651.283.4884
Office 651.351.5005

Email Jon@MetroEastCRE.com
Web www.MetroEastCRE.com

The information contained herein has been provided by the property owner or obtained from sources deemed reliable. Although the information is believed to be accurate, it is not guaranteed. The property is subject to price change, prior sale or lease and withdrawal from the market, without notice. Buyer is responsible to conduct its own due diligence, as this offering contains no representations or warranties.