



FOR SUBLEASE



## THE QUINN BUILDING

### Available Office Space:

± 5,000 - 10,788 RSF | Call for Pricing

### 911 Main Street, Vancouver, WA 98660

- 40,000 SF Class A office and retail building located prominently in the heart of downtown Vancouver, Washington
- Tenants in the building enjoy features and quality of finishes as nice as any newly constructed Class A building with historic touches such as the original freight elevator
- Additional features include a new HVAC, operable windows, tall ceilings, a beautiful building lobby with rotating art displays and shower rooms

### TAMARA J. FULLER, CCIM

Senior Vice President | Licensed in WA

360-946-4832 | tamara.fuller@capacitycommercial.com

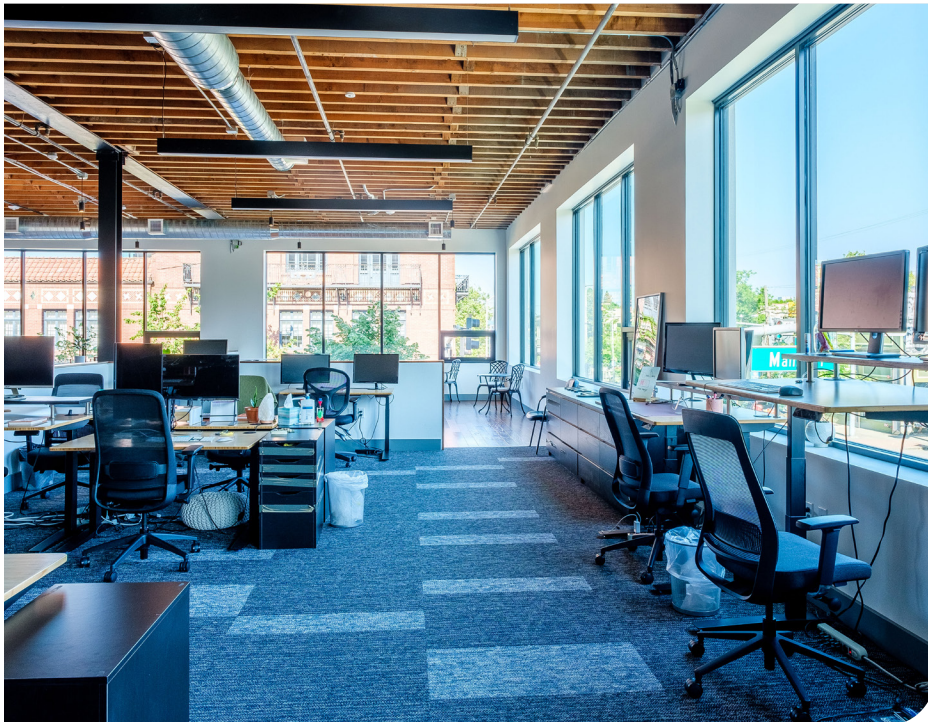
### ERIC ANDERSON

Senior Vice President | Licensed in WA

360-946-4831 | eric@capacitycommercial.com



**FOR  
SUBLEASE**



**PROPERTY SUMMARY**

## PROPERTY DETAILS

<b>Address</b>	911 Main Street, Vancouver, WA 98660
<b>Building SF</b>	40,000 SF
<b>Built</b>	1955, Remodeled in 2019
<b>Available Space - Suite 200</b>	± 5,000 - 10,788 RSF
<b>N° of Suites Available</b>	1
<b>Sublease Rate</b>	Call for Pricing - Negotiable
<b>Use Type</b>	Office
<b>Building Class</b>	Class A, Elevator Served
<b>Suite Amenities</b>	<ul style="list-style-type: none"><li>• Two conference rooms</li><li>• Kitchen and lounge areas</li><li>• Three large phone booths</li><li>• Huddle room</li><li>• One private office</li><li>• Beer, cider, kombucha, coffee and tea</li><li>• High-speed internet</li><li>• Private bathrooms</li><li>• Mother's room</li></ul>

## Location Features

Located in downtown Vancouver, Washington at Main Street & Evergreen Boulevard, The Quinn Building is highly visible from I-5 and has quick and easy access to I-5 & I-205.

Portland International Airport & Downtown Portland are located within 15 minutes of the property. This prestigious office address is convenient to the Clark County Courthouse, the offices of the City of Vancouver, area hotels, restaurants and shopping.

Public transportation is located at the Downtown Transit Center nearby.

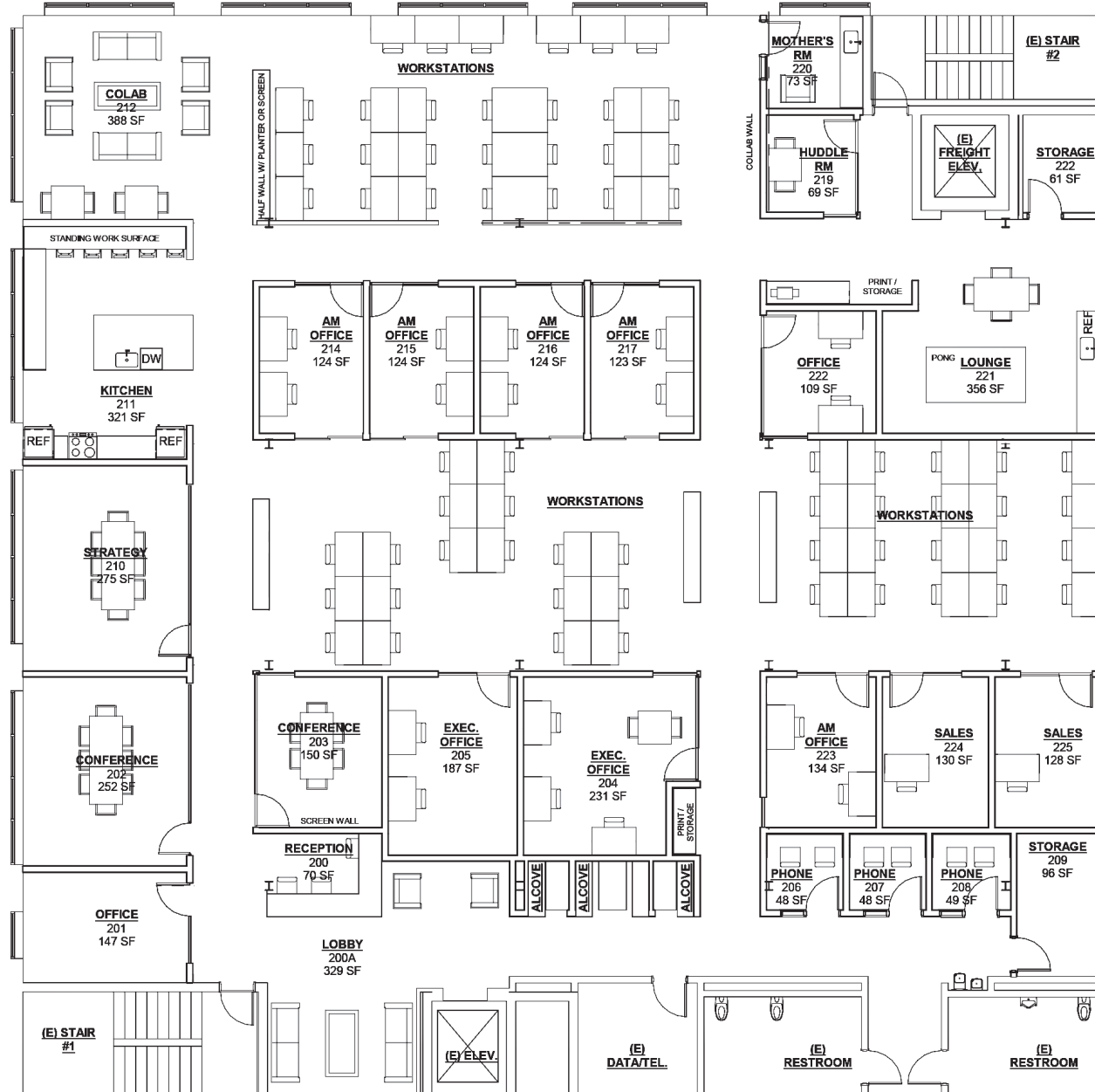
## Nearby Highlights

- Brewed Cafe & Pub
- Compass Coffee
- Donnell's Bar
- Grays Restaurant & Bar
- Hilton
- Joe Brown's Cafe
- Little Conejo
- Little Italy's Trattoria
- Main Event Sports Grill
- Mighty Bowl
- Regal City Center
- SOFTEA
- Subway
- Thai Orchid
- The Smokin' Oak BBQ
- Vancouver Community Library
- Vata Salon & Spa Aveda

# 2ND FLOOR OFFICE 5,000 - 10,788 RSF



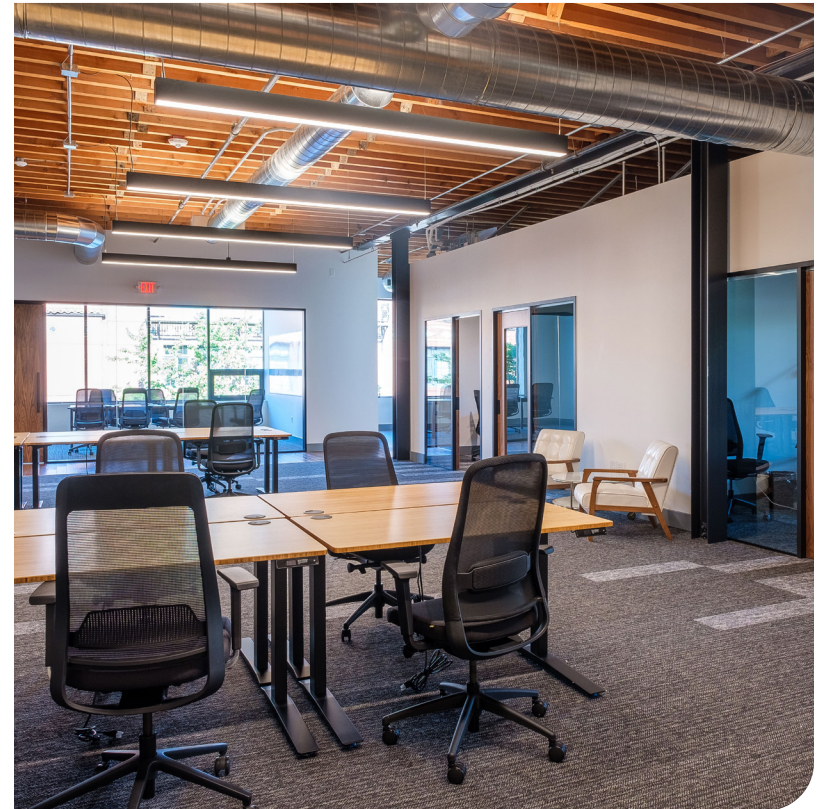
## FLOOR PLAN







# INTERIOR PHOTOS







# LOCAL AERIAL MAP



Map data ©2024 Google Imagery ©2024, Airbus, CNES / Airbus, Maxar Technologies, Metro, Portland Oregon, Public Laboratory, State of Oregon, U.S. Geological Survey, USDA/FPAC/GEO



**TAMARA J. FULLER**  
Senior Vice President | Licensed in WA & OR  
360-946-4832  
tamara.fuller@capacitycommercial.com

**ERIC ANDERSON**  
Senior Vice President | Licensed in WA  
360-946-4831  
eric@capacitycommercial.com