

# 1405 SE 28th Street

Easy Access to Hwy 141

Grimes, Iowa 50111

## Property Details

### + Available Space

- Suite 103 - 2,400 SF\*
- Suite 104 - 2,000 SF\*
- Suite 105 - 1,600 SF\*
- Suite 106 - 1,600 SF\*
- Suite 204 - 1,600 SF\*\*
- Suite 205 - 1,600 SF\*\*
- Suite 206 - 1,600 SF\*\*
- Suite 207 - 2,000 SF\*\*
- Suite 208 - 2,000 SF\*\*

\*Suites can be combined for 7,600 SF

\*\*Suites can be combined for 8,800 SF

### + Lease Rate

- \$12.50/SF Modified Gross

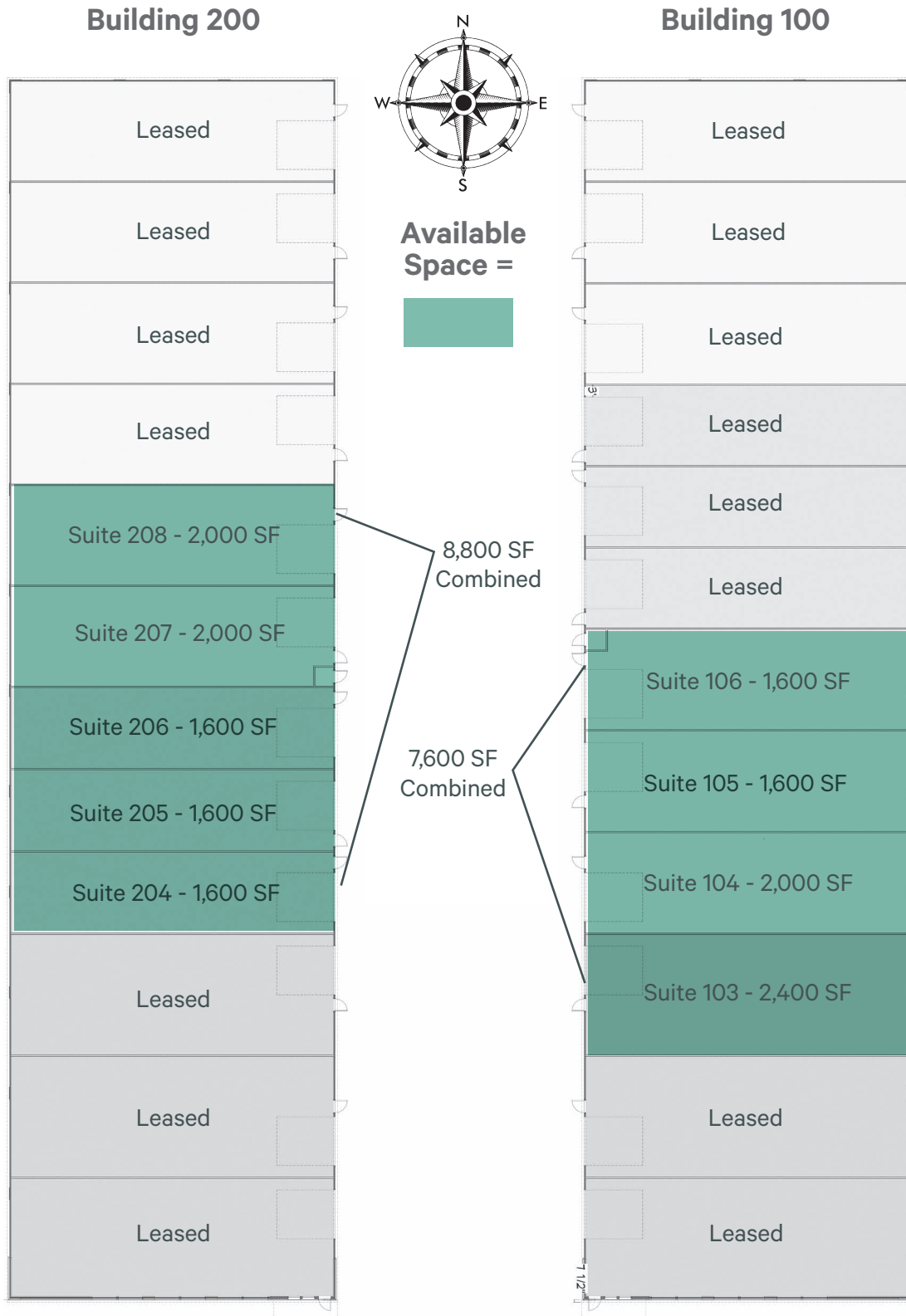
### + Property Features

- 80' bay depth
- Spaces delivered with a Reznor heater and a restroom
- 14' to 16' clear height
- Floor drain in each bay

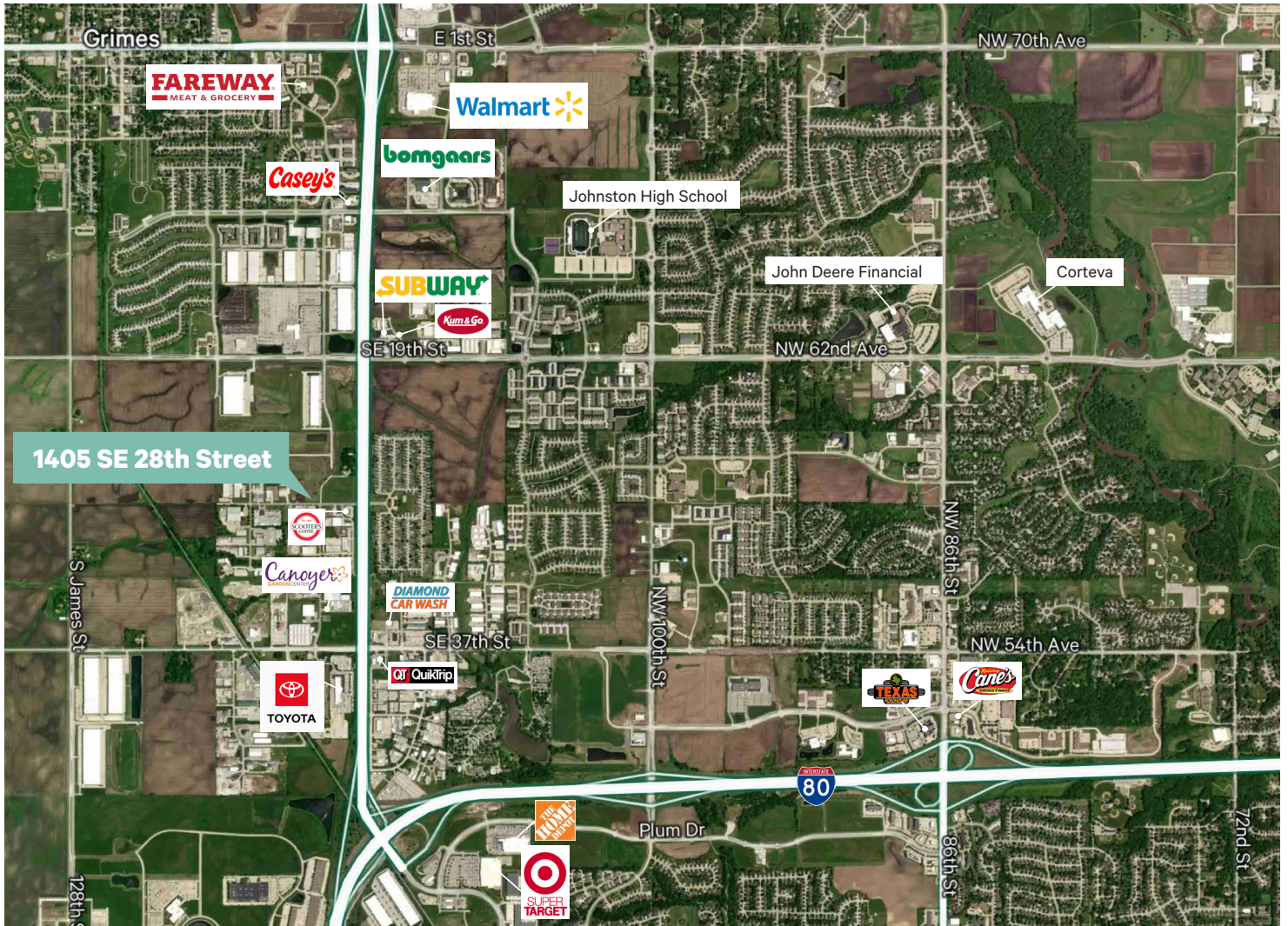
Call Broker for Lease Incentives to Tenants



# Site Plan



# Property Location



## Contact Us

### Ajdin Nadarevic

Senior Vice President  
 +1 515 415 6114  
 ajdin.nadarevic@cbre.com  
 Licensed in the State of Iowa

### Ben Probst

Sales Associate  
 +1 515 415 6108  
 ben.probst@cbre.com  
 Licensed in the State of Iowa

© 2024 CBRE, Inc. All rights reserved. This information has been obtained from sources believed reliable, but has not been verified for accuracy or completeness. You should conduct a careful, independent investigation of the property and verify all information. Any reliance on this information is solely at your own risk. CBRE and the CBRE logo are service marks of CBRE, Inc. All other marks displayed on this document are the property of their respective owners, and the use of such logos does not imply any affiliation with or endorsement of CBRE. Photos herein are the property of their respective owners. Use of these images without the express written consent of the owner is prohibited.